

Weekly Wildfire Brief

[Provide Feedback on this Report](#)

Notice: The information in this report is subject to change and may have evolved since the compiling of this report.

BLUE Text = Newly added information and information that has changed since the last wildfire brief.

GRAY Text = Information where nothing new has been posted since the last wildfire brief, unable to reverify the information as still being current.

Inside this Brief:

Summary	Pg 1 - 2	Air Quality Maps	Pg 7
State Wildfire Map	Pg 3	Wildfire Snapshot Pages	Pg 8-43
Weather Information	Pg 4	Downloadable Map Files	Pg 44
Red Flag Watches & Warnings	Pg 5	Reference Links	Pg 45
Significant Fire Potential Maps	Pg 6	(Previous Brief Published 8/2/18)	

Wildfire Summary - August 5, 2018

For reference: 1 sq mile = 640 acres ; 1 football field = approx 1.32 acres

Fire	Acres Burned [Change]	% Contained [Change]	Evacuations	Structures Threatened	Structures Destroyed	Page
Calaveras County						
Parrots Fire *	135	40%	None Listed	None Listed	None Listed	<u>8</u>
Del Norte & Siskiyou Counties						
Natchez Fire	9,463 [+1,770]	30% [+15%]	YES	unknown	None listed	<u>9</u>
Kern County						
Tarina Fire *	3,516	95%	None listed	None	None	<u>10</u>
Lake, Mendocino, Colusa, & Glenn Counties						
Mendocino Complex	266,982 [+141,814]	33% [-6%]	YES	15,300	130	<u>11-19</u>
Lassen County						
Whaleback Fire	18,703 [-23]	90% [+30%]	Residential - Lifted	100	None	<u>20-21</u>
Madera County						
Lions Fire	7,549 [+901]	65% [+5%]	None	None	None	<u>22</u>
Mariposa County						
Ferguson Fire	89,633 [+20,193]	38% [-3%]	YES	995	10	<u>23-26</u>
Mendocino County						
Eel Fire	972 [-28]	60% [35%]	Advisory	40	3	<u>27</u>
Also see Mendocino Complex, under - Lake, Mendocino, and Colusa Counties						

Continued on Next Page

Wildfire Summary (continued)

For reference: 1 sq mile = 640 acres ; 1 football field = approx 1.32 acres



Fire	Acres Burned [Change]	% Contained [Change]	Evacuations	Structures Threatened	Structures Destroyed	Page
Mono County						
Hot Creek Fire	419 [-17]	99% [+4%]	Lifted	None	None	28
Owens Fire	338 [+26]	99% [+4%]	Lifted	None	None	29
Riverside County						
Cranston Fire	13,139 [+0]	96% [+0%]	None	None	12	30-31
San Bernardino County						
Valley Fire	1,350 [+0]	30% [+0%]	None listed	None	None	32
Shasta & Trinity Counties						
Carr Fire	160,049 [+33,136]	43% [+6%]	YES	1,229	1,604	33-42
Tuolumne County						
Donnell Fire *	6,000	2%	YES	225	None	43



Current Wildland Fires

as of August 05 2018 - 0800 Hours



 Active Fire (6)
 Recently Contained (2)
 LRA - Local Responsibility Area
 SRA - State Responsibility Area
 FRA - Federal Responsibility Area



August 05 2018 - 0800 hrs
 Produced by: Cal OES GIS Division
 Source: CalOES, FAMWEB 209s, IRWIN
 Active_Incident\Fires\Statewide_Daily_Fire_Maps
 \Statewide_Daily_Fire_Maps.aprx

Weather Information

Source: Cal OES Daily Situation Report - August 5, 2018

NORTHERN CALIFORNIA

*** Monsoon Thunderstorms Possible Late Thursday and Friday ***

For the next week or so low pressure will be west of the Pacific NW and northern CA and strong high pressure will be centered over the Desert SW. The low pressure area will have more impact on the region for another couple of days.

W-NW winds will increase again this afternoon through the coastal range and over the higher terrain in the east. By late afternoon gusts to 20-30 mph will spread through the gaps and passes of the coastal mountains and into the western Sacramento Valley. Some spots from the Cascade- Sierra crest east will see SW-W gusts reach 25 mph or so this afternoon. Minimum Relative Humidity (RH) values will be 7-17% in the driest interior areas. These conditions will be repeated each day through Thursday while a warming trend takes place. By Wednesday or Thursday temperatures will be 5-8 degrees above normal. There is a chance that monsoon moisture could move northward and produce thunderstorms late Thursday and Friday. This situation will be watched very closely.

SOUTHERN CALIFORNIA

Strong westerly winds across the desert passes through this evening

Gusty northerly nighttime winds over Santa Barbara County and the Grapevine through Monday

Very dry through Tuesday

Hot Monday through the end of this week

There will be little change in the weather today as our region remains in between a weak Pacific trough over Northern California and a strong high pressure area over the Desert Southwest. West winds of 20 to 30 mph with gusts to 50 mph will surface across the desert passes through this evening. North nighttime winds of 15 to 25 mph with gusts to 40 mph will surface across much of Santa Barbara County and the Grapevine through Monday. Temperatures will be near to a little above normal, with upper 70s and 80s across the mountains and 90s to 102 in the valleys. Minimum humidity will be mainly in the single digits and teens away from the coastal areas. The strong high pressure area over the Desert Southwest will expand westward into Southern California bringing a significant increase in temperature Monday. Maximum temperatures will be in the mid 80s to mid 90s across the mountains and upper 90s to 110 in the valleys. Tuesday looks to be the hottest day across Southern California and Wednesday will be the hottest day across Central California during the next week. It will cool a little late this week as the high moves into Nevada, but widespread triple digit heat is expected to continue across interior lower elevations. Minimum humidity will remain in the single digits and teens away from the coastal areas through Tuesday. Humidity will increase across Southern California starting Wednesday and over the Sierra starting Thursday. There will be no change in the very dry conditions across Central California west of the Sierra through the end of this week. Isolated to scattered afternoon showers and wet thunderstorms will form over the mountains and higher deserts of Southern California east of I-15 Wednesday through Saturday and over the Sierra Crest and Northern Deserts Thursday through Saturday.

Red Flag Warnings & Watches

Current Red Flag Warnings & Watches



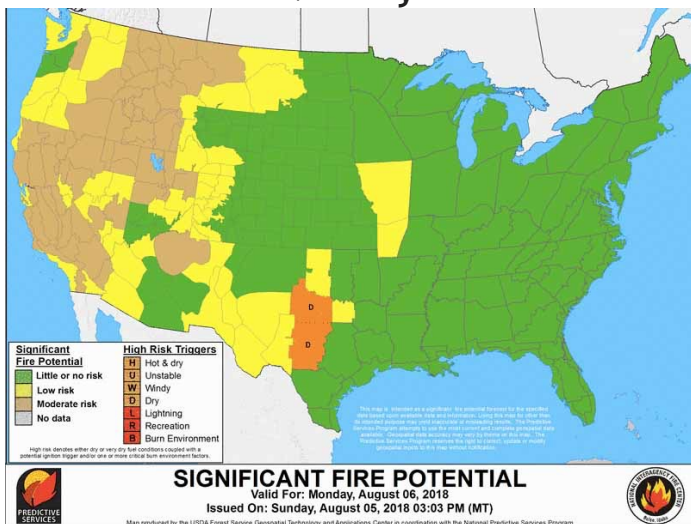
Source: <https://www.weather.gov/fire/> (August 5, 2018 3:30am)

Current Watches, Warnings or Advisories for California Link

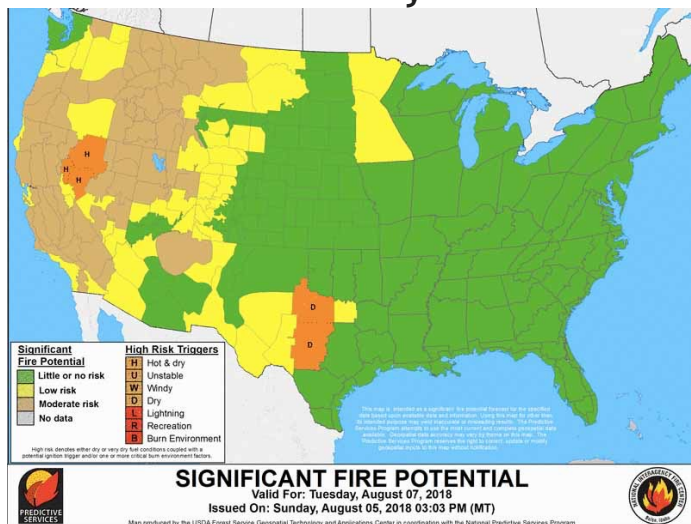
<https://alerts.weather.gov/cap/ca.php?x=1>

Significant Fire Potential Maps

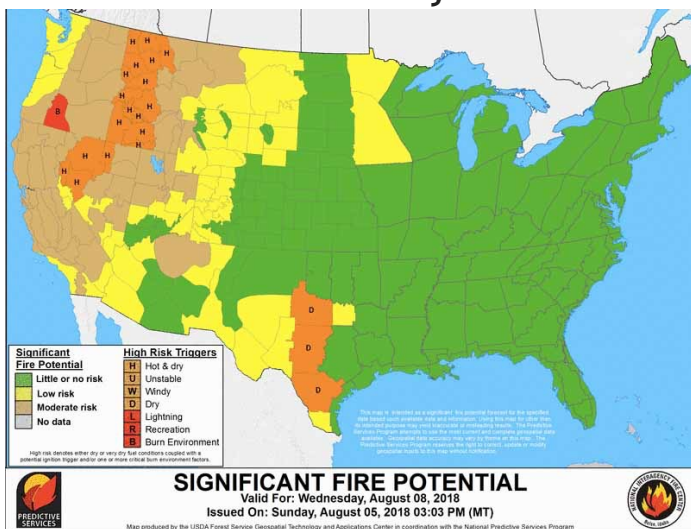
Monday



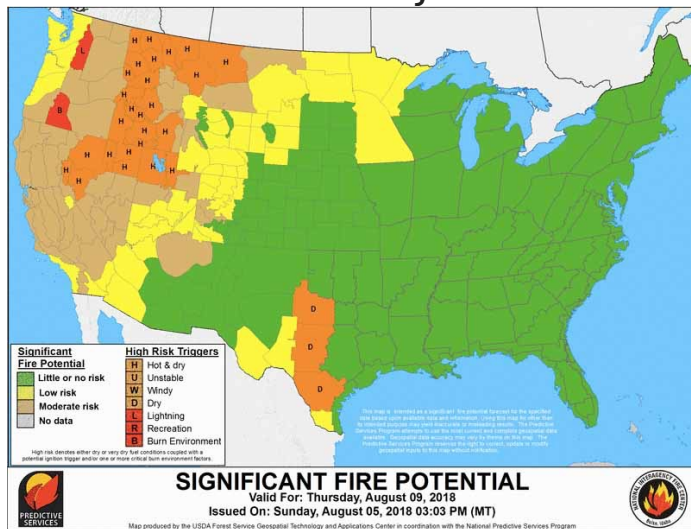
Tuesday



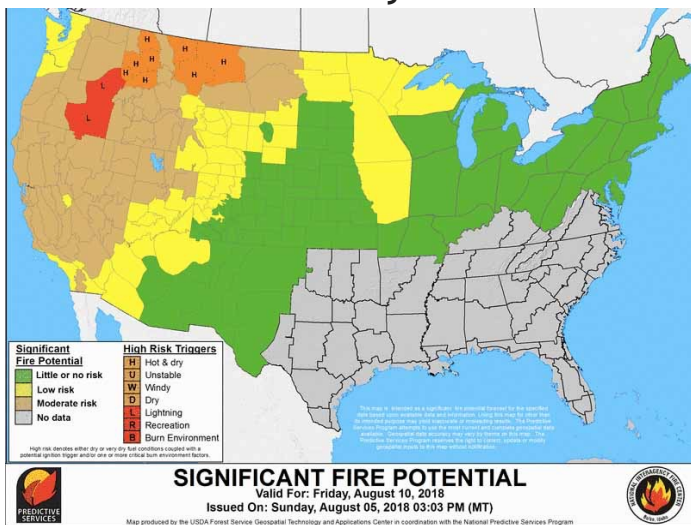
Wednesday



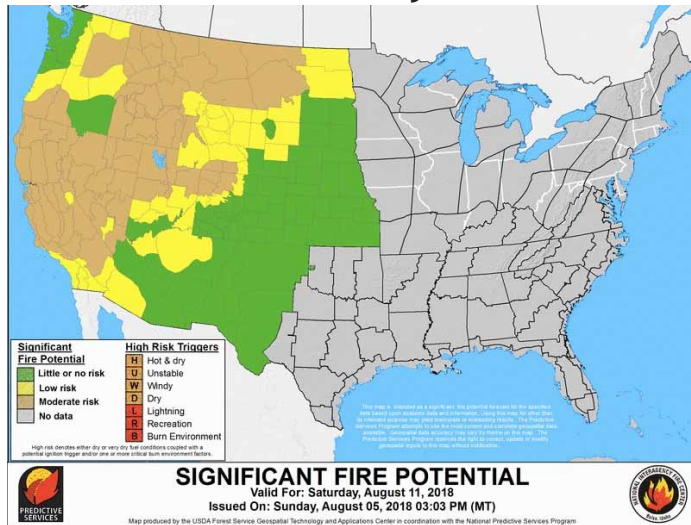
Thursday



Friday



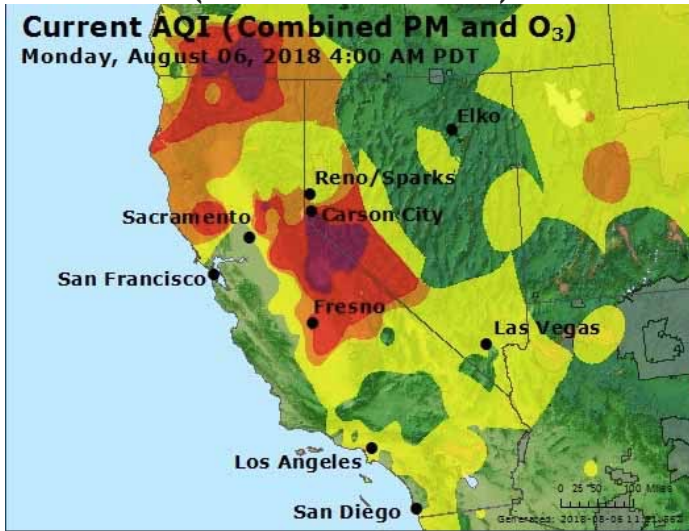
Saturday



Source: <http://psgeodata.fs.fed.us/staticmap.html>

California Current Air Quality Map

Current Air Quality
(as of 8/6 4:00am)



Air Quality Forecast for
Monday, August 6



Source: https://www.airnow.gov/index.cfm?action=airnow.local_state&stateid=5&mapcenter=0&tabs=0

Legend: AQI = Air Quality Index; PM = Particulate Matter; O₃ = Ozone

Air Quality Index Basics Overview: <https://airnow.gov/index.cfm?action=aqibasics.aqi>

Guides	<p>Tips for choosing indoor air cleaner for effective indoor smoke removal in California: https://ww2.arb.ca.gov/news/tips-choosing-indoor-air-cleaner-effective-indoor-smoke-removal-california</p> <p>CA Department of Industrial Relations - Protecting Workers Exposed to Smoke from Wildfires: https://www.dir.ca.gov/dosh/wildfire/Worker-Protection-from-Wildfire-Smoke.html</p> <p>Cal/OSHA Notice - Worker Health and Safety in Wildfire Regions: https://www.dir.ca.gov/dosh/documents/Wildfire-Safety-Notice-for-Employers-Handout.pdf (Note N95 respirator distribution site list is out of date)</p>
--------	---

Parrots Fire - Calaveras County

– Newly Added Fire –

Acres Burned [Change]	% Contained [Change]
135 (1)	40% (1)
Start Date	Estimated Containment Date
August 5, 2018 (1)	Not listed
Lead Agency(ies)	
CAL FIRE Tuolumne-Calaveras Unit (1)	
Initial Location	
Parrots Ferry Rd x Camp 9 Rd, South of the community of Vallecito (1)	



Structures Threatened	Structures Destroyed
None listed	None listed

Evacuations
None listed

Other Infrastructure Threats
None listed

Projected Fire Activity
fire's forward progress has been stopped (2)

Cause of the Fire
Not listed

Hashtags
#parrotsfire

Fire Maps
No Fire perimeter map available
Impacted Zip Codes:
Nearby Zip Codes:

Information Sources

- 1) Cal Fire Incident Page - Parrots Fire: http://www.fire.ca.gov/current_incidents/incidentdetails/Index/2197 (Updated: August 05, 2018 7:19 pm)
- 2) Cal Fire Tuolumne-Calaveras Unit Twitter Post: <https://twitter.com/CALFIRETCU/status/1026278746540650496> (Updated: August 5, 2018 6:28pm)

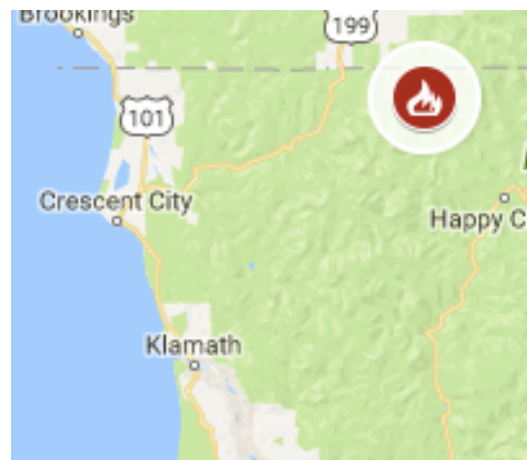
Natchez Fire - Del Norte & Siskiyou Counties

Acres Burned [Change]	% Contained [Change]
9,463 (1) [+1,770]	30% (1) [+15%]

Start Date	Estimated Containment Date
July 15, 2018 (1)	August 31, 2018 (1)

Lead Agency(ies)
U.S. Forest Service (1)

Initial Location
15 miles southeast of Cave Junction, OR (1)



Structures Threatened	Structures Destroyed
13	None listed

Projected Fire Activity

48 Hrs - 0.5 mile spread into Cole Creek at south end of Natchez. Single tree and group torching, spotting with short uphill runs possible. Spotting to 0.25; greater if smoke lifts and fire gets very active. (1)

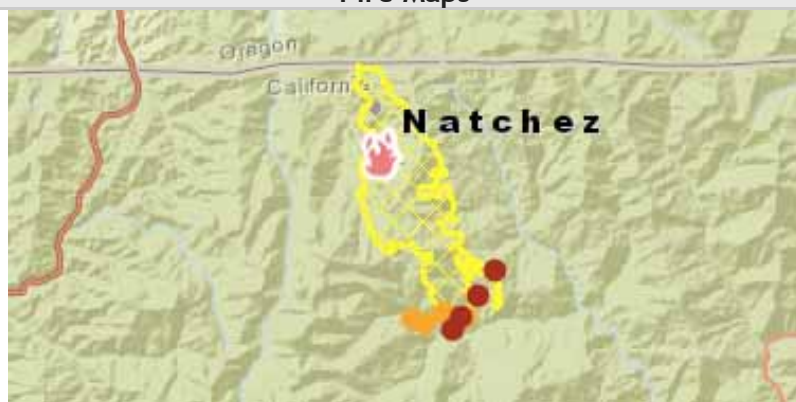
72 hrs - Active surface spread. During short periods where smoke clears, single tree and group torching with short crown runs possible with long range spotting. Transition back to hotter, dryer, unstable weather with potential for very active to extreme fire behavior. (1)

72+ hrs - Very high to extreme fire behavior with expected hot, dry, unstable weather. (1)

Cause of the Fire
Lightning (1)

Hashtags
#NatchezFire

Fire Maps



Source: [National Interagency Fire Center Map \(Aug 5, 2018\)](#)

Impacted Zip Codes: 96039

Nearby Zip Codes: fairly central in the impacted zip code

Infrastructure Impacts

69kV powerlines threatened (2)
Powerlines in fire area de-energized (2)

Evacuations

Evacuated: 2 homes at end of South Fork Road (1)

Evacuation Warning: all other residences accessed by the South Fork Road and Grayback road north of the junction of the South Fork Road and the Grayback Road. The community of Sunstar (1)

Information Sources

- 1) InciWeb Incident Page - Natchez Fire: <https://inciweb.nwcg.gov/incident/5948/> (Updated: August 5, 2018 7:26am)
- 2) Northern California Geographic Coordination Center - News and Notes - Natchez Fire: <https://gacc.nifc.gov/oncc/news.php> (Updated: August 5, 2018 7:00pm)

Tarina Fire - Kern County

– Newly Added Fire –

Acres Burned [Change]	% Contained [Change]
3,516 (1)	95% (1)
Start Date	Estimated Containment Date
August 3, 2018 (1)	August 5, 2018 (2)
Lead Agency(ies)	
Kern County Fire Department (1)	
Initial Location	
Breckenridge Rd & Comanche Dr, east of Bakersfield (1)	



Structures Threatened	Structures Destroyed
None (2)	None (2)
Evacuations	
None listed	
Other Infrastructure Threats	
None listed	
Projected Fire Activity	
Minimal fire behavior. (2)	
Cause of the Fire	
Not listed	
Hashtags	
#tarinafire	

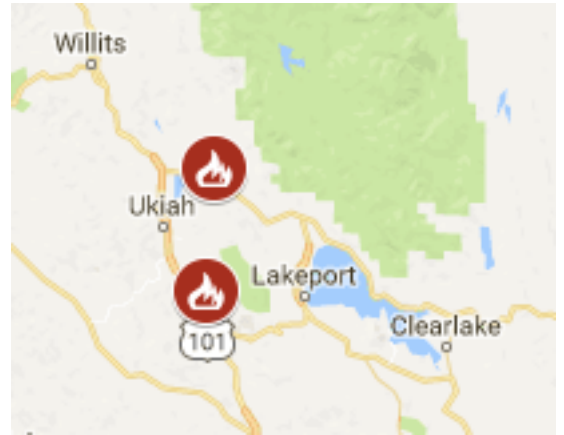
Fire Maps
No Fire Perimeter Map available
Impacted Zip Codes: 93220, 93518
Nearby Zip Codes: 93306

Information Sources

- 1) Cal Fire Incident Page - Tarina Fire: http://www.fire.ca.gov/current_incidents/incidentdetails/Index/2193 (Updated: August 05, 2018 2:53 pm)
- 2) National Interagency Coordination Center Incident Management Situation Report Thursday, August 5, 2018 - 0530 MT

Mendocino Complex - Lake, Mendocino, Colusa Counties

Fire	Acres Burned [Change]	% Contained [Change]
Ranch Fire	218,319 (1) [+134,429]	23% (1) [-10%]
River Fire	48,663 (2) [+7,385]	58% (2) [+8%]
Combined	266,982 (3) [+141,814]	33% (3) [-6%]



Start Date	Estimated Containment Date
July 27, 2018 (1)	August 15, 2018 (3,6,10) <i>Note: The InciWeb Incident Page still lists a date of 8/8/18 (4)</i>

Lead Agency(ies)
Unified command: CAL FIRE Mendocino Unit and USFS Mendocino National Forest (1)

Initial Location	
Ranch Fire	SR CA-20 at MP 39, Old Lake County SR, Blue Lake, 8 mi NE of Ukiah (3)
River Fire	Old River Road, 6 miles north of Hopland (3)

Snapshot Overview	
Structures Threatened	15,300
Structures Destroyed	130
Power Infrastructure	Threatened /Impacts
Water Infrastructure	No Current Issues
Telecom Infrastructure	Threatened /Impacts

Cause of the Fire
Under Investigation (3)

State Emergency Proclamation
On 07/28/18, Governor Edmund G. Brown Jr. issued [Emergency Proclamations](#) for Lake and Mendocino counties due to the effects of the River and Ranch fires (9)

Hashtags
[#RanchFire](#) [#RiverFire](#)
[#mendocinocomplex](#)



Source: [Cal Fire 2018 Incidents Map \(August 5, 2018\)](#)
[More maps on the following pages](#)

Impacted Zip Codes: 95423, 95443, 95449, 95451, 95453, 95458, 95464, 95469, 95470, 95479, 95482, 95485, 95493, 95939, 95979, 95987

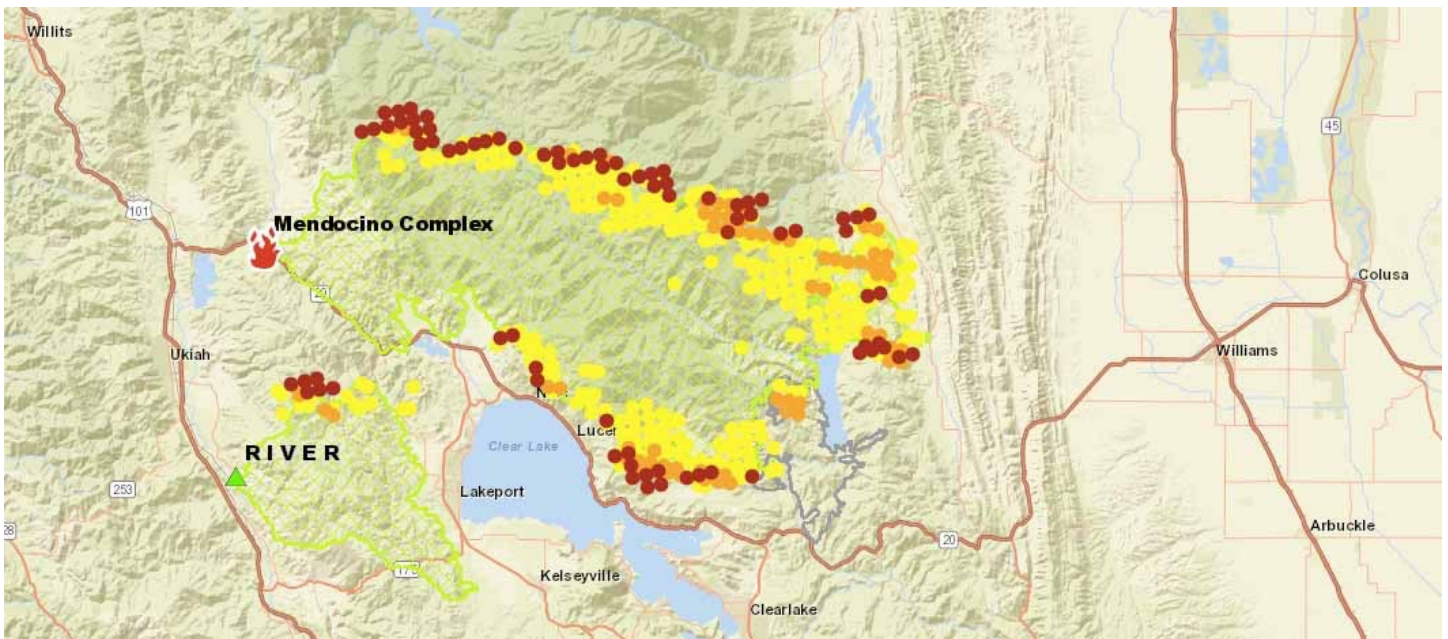
Nearby Zip Codes: 95418, 95422, 95424, 95435, 95457, 95461, 95470, 95481, 95606, 95637, 95679, 95912

Continued on Next Page

Mendocino Complex - Lake, Mendocino, Colusa Counties

Projected Fire Activity

Sunday Activity	Sunday afternoon brought lower humidity and higher winds which caused to fire activity to increase and push forward as we have seen in previous days to the south, east, and northern portions of the Ranch Fire. The northern part of the River Fire continues to push towards Cow Mountain and Scotts Valley Rd. (1)
Overall Activity	Extreme torching, flanking and spotting. Both fires continue to have rapid growth when aligned with fuels, topography, and wind. High temperatures, low humidity, and afternoon winds coupled with critically low fuel moistures are contributing to large fire growth. (4) Extreme fire behavior with crowning, running and spotting. (6)
Directions	Continued fire spread to the east-southeast with the predicted north-northwest winds (4) The Northwest portion of the Ranch Fire will progress further into the Mendocino National Forest and continue to establish itself in the drainage's south of Lake Pillsbury. (4)



Source: [National Interagency Fire Center](#) (August 5, 2018)

Additional Map Links

Cal Fire Maps: http://cdfdata.fire.ca.gov/incidents/incidents_details_maps?incident_id=2175

InciWeb Maps: <https://inciweb.nwcg.gov/incident/maps/6073/>

Continued on Next Page

Mendocino Complex - Lake, Mendocino, Colusa Counties

Mandatory Evacuations

Overview	<p>Per Cal OES BOC Report - Total number of people:</p> <ul style="list-style-type: none"> Mandatory Evacuation: 15, 246 (10) Advisory Evacuation: 2,941 (10) Repopulated: 6,838 (10)
Colusa County	<ul style="list-style-type: none"> The town limits of Stonyford, West to the Colusa- Lake County line and North to Colusa-Glenn County line, Century Ranch sub-division, East and West side of East Park Reservoir, Lodoga from Squaw Creek Inn South and all areas West of Bear Valley Road to Hwy 20. (3)
Lake County	<ul style="list-style-type: none"> East of the Lake-Mendocino County Line, south of the Lake-Mendocino-Glenn County Line, West of the Lake-Colusa County Line, north of SR 20. (3) East of the Lake-Mendocino County Line, south of SR 20, east of Hill Road, North of Riggs Rd. M (3)
Mendocino County	<ul style="list-style-type: none"> SR CA-20 area from one mile south of SR CA-20, east of Potter Valley Road, south of the fire perimeter, and west of Mendocino- Lake County Line. (3) Cow Mountain Area of Mendocino County (South of SR-20, west of the Mendocino/Lake County line, east of the intersection of North Cow Mountain Road and the Cow Mountain Access Road, and north of the current fire perimeter of the River Fire) (3)

Evacuation Warnings / Advisories

Colusa County	<ul style="list-style-type: none"> East of the Lake-Colusa County Line (Bartlett Springs Road/Brim Road) to Leesville-Lodoga Road, north to Lodoga, west to the National Forest boundary, North along the National Forest boundary to the Colusa-Glenn County Line, and west to the Colusa-Lake County Line. (3)
Glenn County	<ul style="list-style-type: none"> Line, west of County Road 306, south of County Road 308, east of the Mendocino National Forest Boundary. (3)
Lake County	<ul style="list-style-type: none"> South of the Nice-Lucerne Cutoff Road, west of Clear Lake, north of 11th Street, and east of Hill Road. (3) South of 11th Street, west of Clearlake, north of SR 29 and SR 175, east of the River Fire perimeter. (3) South of SR 29 and SR 175, west of Highland Springs Road, north and east of the Lake- Mendocino County line, and east of the River Fire perimeter. (3)
Mendocino County	<ul style="list-style-type: none"> South of the Eel River, east of the Eel River Road, east of the East Side Potter Valley • Road, East of Potter Valley Road to SR 20, north of SR 20, west of the Mendocino Lake County Line (3) South of the fire perimeter, east of intersection SR 175 and Old River Road, north of Mendocino Couny/Sonoma County Line, west of Mendocino/Lake County Line (3) South of Yokayo Ranch Road, east of the Russian River, west of the Lake/ Mendocino County Line, north of the Old River Road/SR 175 intersection. (3) East Ukiah Valley Area (south of SR-20, east of the east side of Lake Mendocino and east of the Russian River, north of Yokayo Rancheria Road, and west of the intersection of North Cow Mountain Road and Cow Mountain Access Road) (3)

Continued on Next Page

Mendocino Complex - Lake, Mendocino, Colusa Counties

Evacuation Maps

Maps	Google Maps Data Overlay Compilation Map: https://www.google.com/maps/d/viewer?mid=1rXgr1EznF_I0dkcxvH221qF5I29BGIWM&ll=39.14640142823378%2C-122.79371845039066&z=10
------	---

Evacuation Centers / Shelters		Shelter Count
Blue Lake	Blue Lake Casino Hotel, 777 Casino Way	
Calistoga	Napa County Fairgrounds, 1435 N. Oak St.	
Colusa	Colusa County Veterans Hall, 108 E. Main Street (3,10)	3/40 (10)
Kelseyville	Mountain Vista Middle School, 5081 Konocti Rd. -ARC (3,10,11) Kelseyville High School, 5480 Main St - ACR (10,11)	83 (11) None (11)
Lower Lake	Lower Lake High School, 9430 Lake St - ARC (3,10,11)	180 (11)
Middletown	Twin Pines Casino, 22223 S State Hwy. 29 - ARC (3,10,11) Middletown High School, 20932 Big Canyon Rd. - ARC (3,11) Middletown Middle School, 15846 Wardlaw St (3)	113 (11) 51 (11) Not listed
Ukiah	Mendocino College, 1000 Hensley Creek Road - ARC (3,10,11)	26 (11)
AirBnB	Open homes Program - Mendocino Complex: https://www.airbnb.com/welcome/evacuees/carrfire	
Small Animal Shelter	Mendocino County Animal Shelter, 298 Plant Rd., Ukiah (3,10) Middletown High School, 20932 Big Canyon Rd. Sonoma-Marin Fair, 175 Fairgrounds Dr., Petaluma (10) Redwood Riders Arena, 8300 East Rd., Redwood Valley (10)	
Large Animal Shelter	Middletown High School, 20932 Big Canyon Rd. Sonoma-Marin Fair, 175 Fairgrounds Dr., Petaluma (10) Redwood Riders Arena, 8300 East Rd., Redwood Valley (3)	

Road Closures

Major Roads	Highway-20 - Closed from the junction of SR 29 to the junction of SR 53 in Lake County (15) Highway-29 - no closures (16) Highway 175 - no closures (17) Cal Trans Quick Maps: http://quickmap.dot.ca.gov
Local Road - Colusa County	Northbound Bear Valley at SR-20 (3) Leesville at Bear Valley (3) Southbound Leesville Ladoga Road at Sites Ladoga Road (3) Sites Ladoga Road north of Maxwell Site Road (3) County Road 306 1/2 north of the County Line (3) County Road Closures List: http://www.ccdpw.com/PDF%20Files/RoadClosures/Road%20Closure%20Report%20(Complete).pdf
Local Road - Glenn County	None as of the 8/5 7:00pm Cal Fire report

Continued on Next Page

Mendocino Complex - Lake, Mendocino, Colusa Counties

Road Closures (continued)

Local Roads - Lake County	Blue Lakes Road at SR-20 (3) Mid Lake at SR-20 (3) Irvine at SR-20 (3) Scotts Valley at SR-20 (Southend of Blue Lakes Road) (3) Saratoga Springs at SR-20 (3) Witter Springs at SR-20 (3) Batchelor Valley at SR-20 (3) Eastbound SR-20 at SR-29 (3) Mockingbird at SR-29 (3)	Nice/Lucerne cutoff at SR-29 (3) Northbound Lakeshore at Nice Lucerne Cutoff (3) Scotts Valley at Hendrix (3) Sulphur Bank at SR-20 (3) Westbound SR-20 at SR-53 (3) Old Long Valley Road at SR-20 (3) New Old Long Valley Road at SR-20 (3) Walkerridge at SR-20 (3) Water Traugh at SR-20 (3)
Local Road - Mendocino County	Eastbound Mill Creek Road 1/2 Mile East of Old River Road (3) Eel River Road at County Road M6 (20N01) (3) Mendocino County Dept. Of Transportation - Facebook: https://www.facebook.com/MendocinoCountyDOT Mendocino County Dept. Of Transportation - Website: https://www.mendocinocounty.org/government/transportation/road-closures	

Critical Infrastructure Impacts

Power	Threats to power infrastructure that support Lake and Mendocino Counties. (7) 758 PG&E customers affected (10)																	
Gas	No gas outages per Cal OES BOC report (10)																	
Communications	FAA Radio Communication Link Control Tower. (7) Threats to communications infrastructure that support Lake and Mendocino Counties. (7)																	
Water	<table border="1"> <thead> <tr> <th data-bbox="391 1320 727 1415">Water Treatment Plant</th> <th data-bbox="727 1320 1529 1415">Status</th> </tr> </thead> <tbody> <tr> <td data-bbox="391 1415 727 1467">Glenn Haven</td> <td data-bbox="727 1415 1529 1467">In mandatory evacuation area, no problems as of yet (10)</td> </tr> <tr> <td data-bbox="391 1467 727 1520">Lake County CSA</td> <td data-bbox="727 1467 1529 1520">In mandatory evacuation area, no problems as of yet (10)</td> </tr> <tr> <td data-bbox="391 1520 727 1572">Clearlake Oak's CWD</td> <td data-bbox="727 1520 1529 1572">In mandatory evacuation area, no problems as of yet (10)</td> </tr> <tr> <td data-bbox="391 1572 727 1625">High Valley Ranch</td> <td data-bbox="727 1572 1529 1625">In mandatory evacuation area, no problems as of yet (10)</td> </tr> <tr> <td data-bbox="391 1625 727 1677">Thomas Water System</td> <td data-bbox="727 1625 1529 1677">On-line, No Issues (18)</td> </tr> <tr> <td data-bbox="391 1677 727 1730">City of Lakeport</td> <td data-bbox="727 1677 1529 1730">On-line, No Issues (18)</td> </tr> <tr> <td data-bbox="391 1730 727 1759">Lake County - Spring valley</td> <td data-bbox="727 1730 1529 1759">On-line, No Issues (18)</td> </tr> </tbody> </table>	Water Treatment Plant	Status	Glenn Haven	In mandatory evacuation area, no problems as of yet (10)	Lake County CSA	In mandatory evacuation area, no problems as of yet (10)	Clearlake Oak's CWD	In mandatory evacuation area, no problems as of yet (10)	High Valley Ranch	In mandatory evacuation area, no problems as of yet (10)	Thomas Water System	On-line, No Issues (18)	City of Lakeport	On-line, No Issues (18)	Lake County - Spring valley	On-line, No Issues (18)	
Water Treatment Plant	Status																	
Glenn Haven	In mandatory evacuation area, no problems as of yet (10)																	
Lake County CSA	In mandatory evacuation area, no problems as of yet (10)																	
Clearlake Oak's CWD	In mandatory evacuation area, no problems as of yet (10)																	
High Valley Ranch	In mandatory evacuation area, no problems as of yet (10)																	
Thomas Water System	On-line, No Issues (18)																	
City of Lakeport	On-line, No Issues (18)																	
Lake County - Spring valley	On-line, No Issues (18)																	

Continued on Next Page

Mendocino Complex - Lake, Mendocino, Colusa Counties

Structures	Threatened	Damaged	Destroyed
Residential	15,000 (7)	12 (3,7)	67 (7)
Multiple-Residence	-	-	1 (7)
Commercial	300 (7)	-	-
Other Structures	-	14 (3,7)	62 (1,2,3,7)
Total	15,300 (2,7,10)	26 (10)	130 (10)

Damage assessment is still underway - damaged & destroyed structure counts still preliminary.

Injuries / Fatalities	Civilian	Firefighter
Injuries	0 (7)	7 (10)
Fatalities	0 (7,10)	0 (7,10)

Community Infrastructure Threats

Healthcare Facilities	<p>Sutter Lakeside Hospital - CLOSED due to voluntary evacuation of Lakeport. Anticipated opening is later in the week. (18)</p> <p>Rocky Point Care Facility - evacuated, working to repopulate</p> <p>Evergreen Lakeport Healthcare - evacuated</p> <p>Dialysis Clinic, Inc - Ukiah - Operational</p>
------------------------------	---

Jail	Lake County jail repopulated on August 4 (9)
-------------	--

Schools	<p>The Lakeport Unified School District does not anticipate staff returning before 08/16/18 and students to begin school before 08/22/18. (9)</p> <p>Schools under mandatory evacuation: 9 public schools, 1 private school (10)</p> <p>Schools previously within evacuation zones/repopulated: 14 public schools and 1 private school (10)</p> <p>Lakeport Unified School District start postponed until August 22 (10)</p> <p>California Department of Education expects impacted school districts to make final decisions regarding start of the new school year by August 8 (10)</p>
----------------	--

	Post Office - Closed	Alternate Location
Post Office	Lakeport Post Office, 1151 11th St., 95453 (5)	Kelseyville Post Office, 5500 Gaddy Ln., 95451 (5)
	Finley Post Office, 1904 Big Valley Rd., 95435 (5)	Kelseyville Post Office, 5500 Gaddy Ln., 95451 (5)
	Upper Lake Post Office, 9435 Main St., 95485 (5)	Clearlake Post Office, 14500 Olympic Dr., 95422 (5)
	Nice Post Office, 3964 E. State Hwy 20, 95464 (5)	Clearlake Post Office, 14500 Olympic Dr., 95422 (5)

Continued on Next Page

Mendocino Complex - Lake, Mendocino, Colusa Counties

Recovery	
Local Assistance Center (LAC)	Lake County - a LAC should be opening by August 10, more details forthcoming (18)
Missing People & Check-Ins	Red Cross Safe & Well: https://safeandwell.communityos.org/cms/index.php
Missing & Found Pets	Lake County Lost & Found Pets: http://publicapps.lakecountyca.gov/publicanimals/Board/LostFound Lake County Animal Search: http://www.lakecountyca.gov/Government/Directory/Animal_Care_And_Control/Search.htm Mendocino County Animal Shelter: https://www.facebook.com/mendoanimalshelter/
Donations	<i>Please do not send in-kind donations without first coordinating with the receiving agency. Unsolicited in-kind donations strain the system.</i> California Volunteers Current Incidents Page: https://californiavolunteers.ca.gov/current-disasters/ Cal OES Business Operations Center - coordinating larger donations and support from the private sector: businessOP@caloes.ca.gov
N-95 Mask Distribution	Mendocino County: N-95 masks are available for local residents at the Ukiah Library, Willits Library and the Round Valley (Covel) Library during normal business hours. (12,13) <ul style="list-style-type: none"> Ukiah Library, 105 N. Main St., Ukiah, CA 95482. HOURS - Mon: Closed; Tue-Thu: 10am - 8pm; Fri-Sun: 10am - 5pm (12) Willits Library, 390 E. Commercial St., Willits, CA 95490. HOURS - Sun-Mon: Closed, Tue-Thu: 10am - 7pm; Fri: 10am - 6pm; Sat: 10am - 5pm (12) Round Valley Library, 23925 Howard St., Covelo, CA 95428. HOURS - Sun-Mon: Closed; Tue-Sat: 10am - 5pm (12) Lake County - City of Lakeport: Starting at 8:00 am, August 6, N95 Particle Respirator Masks will be available to the public at Lakeport City Hall, 225 Park Street, & Police Department, 2025 South Main Street, between 8am and 5pm. (14)
Reporting Damages	How to Report Damage to the Mendocino County Office of Emergency Services: https://www.mendocinocounty.org/government/executive-office/office-of-emergency-services/report-damage-to-oes
Debris Removal General Guidelines	Cal EPA - Fact Sheet: Protecting Public Health from Home and Building Fire Ash: http://calepa.ca.gov/wp-content/uploads/sites/34/2016/10/Disaster-Documents-FireAsh.pdf Department of Toxic Substances Control - Handling Ash, Debris and other Hazardous Materials from Burned Structures: http://www.dtsc.ca.gov/HazardousWaste/upload/Fire_Emergency_Guidance_FS_1.pdf Safe Cleanup of Fire Ash: https://www.arb.ca.gov/carpa/toolkit/emerg-response/safe-cleanup-fire-ash.pdf
Recovery Resource Lists	Cal OES Statewide Wildfire Recovery Resources: http://wildfirerecovery.org Mendocino County Fire Evacuee Resource List: https://www.mendocinocounty.org/home/showdocument?id=22057

Continued on Next Page

Mendocino Complex - Lake, Mendocino, Colusa Counties

Additional Information Resources

<p>Cal Fire</p>	<p>Cal Fire Mendocino Complex Public Information Line: (707) 574-8261 or MendoComplex2018@gmail.com</p> <p>Cal Fire Mendocino Complex News Releases Sign-up (Constant Contact Form): https://visitor.r20.constantcontact.com/manage/optin?v=001uWnjXQrYldC7E8KAawvX0U8k7-2jLoe5dMTXhvrHHBFNLTNVmL_s5fxasvBhMIS-9FCUqwZFi16W8jtPCEkOAp3wPpsnq06PVMFoVvSjLrg%3D</p>
<p>Cal OES</p>	<p>Business Operations Center: BusinessOp@caloes.ca.gov (sending out morning and evening sit reps)</p>
<p>Colusa County</p>	<p>Nixle Alert Feed for the county: https://local.nixle.com/county/ca/colusa/ (NOTE - not actively used by county agencies)</p> <p>NOAA Watches & Warnings for the County: https://alerts.weather.gov/cap/wwaatmget.php?x=CAC011&y=1</p> <p>County Road Closures List: http://www.ccdpw.com/PDF%20Files/RoadClosures/Road%20Closure%20Report%20(Complete).pdf</p>
<p>Glenn County</p>	<p>Nixle Alert Feed for the county: https://local.nixle.com/county/ca/glenn/</p> <p>NOAA Watches & Warnings for the County: https://alerts.weather.gov/cap/wwaatmget.php?x=CAC021&y=1</p>
<p>Lake County</p>	<p>Lake County Alerts Sign-up: https://member.everbridge.net/index/892807736729003#/signup</p> <p>Nixle Alert Feed for the county: https://local.nixle.com/county/ca/lake/</p> <p>NOAA Watches & Warnings for the County: https://alerts.weather.gov/cap/wwaatmget.php?x=CAC033&y=1</p> <p>Lake County Sheriff's Facebook: https://www.facebook.com/lakesheriff/</p> <p>Lake County OES Facebook: https://www.facebook.com/LakeCountyOES</p>
<p>Mendocino County</p>	<p>Nixle Alert Feed for the county: https://local.nixle.com/county/ca/mendocino/ (NOTE - not currently being actively used for the fire)</p> <p>NOAA Watches & Warnings for the County: https://alerts.weather.gov/cap/wwaatmget.php?x=CAC045&y=1</p> <p>Mendocino County Alerts Sign-up: https://member.everbridge.net/index/892807736722865#/signup</p> <p>Mendocino County Non-Emergency Call Center: (707) 467-6428</p> <p>Mendocino County Sherrif's Facebook: https://www.facebook.com/MendocinoSheriff/</p>

Continued on Next Page

Mendocino Complex - Lake, Mendocino, Colusa Counties

Information Sources

- 1) Cal Fire Incident Page - Ranch Fire: http://www.fire.ca.gov/current_incidents/incidentdetails/Index/2175 (Updated: August 05, 2018 7:08 pm)
- 2) Cal Fire Incident Page - River Fire: http://www.fire.ca.gov/current_incidents/incidentdetails/Index/2178 (Updated: August 05, 2018 7:12 pm)
- 3) Cal Fire Incident Update - Mendocino Complex: http://cdfdata.fire.ca.gov/pub/cdf/images/incidentfile2175_3886.pdf (Updated: August 5, 2018 7:00pm)
- 4) InciWeb Incident Page - Mendocino Complex: <https://inciweb.nwcg.gov/incident/6073/> (Updated: August 5, 2018 6:19pm)
- 5) USPS Service Disruptions: <http://about.usps.com/news/service-alerts/business-weather-updates.htm> (Updated: August 4, 2018 2:3pm)
- 6) National Interagency Coordination Center Incident Management Situation Report Thursday, August 5, 2018 - 0530 MT
- 7) Northern California Geographic Coordination Center Short Briefing 209 Summary Report - Mendocino Complex (Updated: August 5, 2018 5:56am)
- 8) Northern California Geographic Coordination Center - News and Notes - Mendocino Complex: <https://gacc.nifc.gov/oncc/news.php> (Updated: August 5, 2018 7:00pm)
- 9) Cal OES Daily Situation Report - August 5, 2018
- 10) Cal OES Business Operations Center Evening Report - August 5, 2018 4:00pm
- 11) American Red Cross Open Shelters Map: https://maps.redcross.org/website/maps/ARC_Shelters.html (Viewed: August 6, 2018 3:08am)
- 12) Mendocino County Library - Locations & Hours: <https://www.mendolibrary.org/locations> (Viewed: August 6, 2018 3:35am)
- 13) Mendocino County Sheriffs Office Facebook Post: <https://www.facebook.com/MendocinoSheriff/posts/10155650187222967> (Updated: July 30, 2018 9:30am)
- 14) Lakeport Police Department Nixle Advisory: <https://local.nixle.com/alert/6727414/> (Updated: August 5, 2018 7:30pm)
- 15) Cal Trans Current Road Conditions - SR 20: <http://www.dot.ca.gov/cgi-bin/roads.cgi?roadnumber=20&submit=Search> (Viewed: August 6, 2018 3:48am)
- 16) Cal Trans Current Road Conditions - SR 29: <http://www.dot.ca.gov/cgi-bin/roads.cgi?roadnumber=29&submit=Search> (Viewed: August 6, 2018 3:50am)
- 17) Cal Trans Current Road Conditions - SR 175: <http://www.dot.ca.gov/cgi-bin/roads.cgi?roadnumber=175&submit=Search> (Viewed: August 6, 2018 3:51am)
- 18) Sutter Lakeside Hospital Homepage: <https://www.sutterhealth.org/lakeside> (Updated: August 5, 2018 5:00pm)

Whaleback Fire - Lassen

Acres Burned [Change]	% Contained [Change]
18,703 (2) [-23]	90% (1,2) [+30%]

Start Date	Estimated Containment Date
July 27, 2018 (1)	August 8, 2018 (2) August 6, 2018 (5)

Lead Agency(ies)
Unified Command: CAL FIRE and USFS Lassen National Forest (1)

Initial Location
off Whaleback Mountain and Antelope Valley Road, West of Spaulding (1); Spaulding, CA About 20 miles NW of Susanville, CA (2)

Structures Threatened	Structures Destroyed
100 residences (5,6)	None (4,5)

Projected Fire Activity
Minimal fire behavior. (4) Isolated unburned pockets of fuel will continue to burn.(5)

Cause of the Fire
Unknown (2)

State Emergency Proclamation
On 07/31/18, a Proclamation was received from Lassen County due to the effects of the Whaleback Fire. The county is requesting state assistance and a Presidential Declaration. (6)

Hashtags
#WhalebackFire



Fire Maps
Source: National Interagency Fire Center Map (August 5, 2018)
Impacted Zip Codes: 96130, 96040
Nearby Zip Codes: n/a
Additional Maps: https://inciweb.nwcg.gov/incident/maps/6048/

Evacuations

Mandatory Evacuations	Gallatin Marina, Ronald McDonald House, and the Merrill, Christie, Eagle and Aspen campgrounds (7)
Lifted	Evacuation Order for Community of Spaulding (2) Evacuation Warnings for Communities of Buck's Bay and Stones Landing (7)
Shelters	Assembly of God Church, 473-465 Richmond Rd. N, Susanville (7)

Continued on Next Page

Whaleback Fire - Lassen (continued)

Road Closures

County Road A1 is closed through the fire area. The south closure is near the entrance to Eagle Lake Marina, and the north closure is at the intersection of A1 and Spalding Way. (2)

Critical Infrastructure Impacts

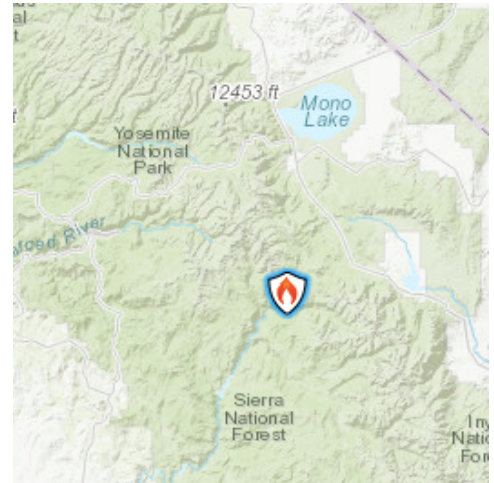
Power	Significant damage to the Lassen Municipal Utility District power lines that supply power to the communities of Spalding, Buck's Bay and Stones Landing. (2) As of 4:30pm Aug 4 - LMUD crews have completed repairs at the south end of the lake; restoring power to the Marina, Youth Camp, and Eagle's Nest. Crews are working on installing the generator and transformer that will restore power to the other communities affected by the ongoing Whaleback Fire outage. (3) Lassen Municipal Utility District Outage Information Page: https://www.lmud.org/outage/
--------------	---

Information Sources

- 1) Cal Fire Incident Page - Whaleback Fire: http://www.fire.ca.gov/current_incidents/incidentdetails/Index/2180 (Updated: August 05, 2018 7:30 am)
- 2) InciWeb Incident Page - Whaleback Fire: <https://inciweb.nwcg.gov/incident/6048/> (Updated: August 5, 2018 6:20pm)
- 3) Lassen Municipal Utility District Outage Information Page: <https://www.lmud.org/outage/> (Updated: August 4, 2018 4:30pm)
- 4) National Interagency Coordination Center Incident Management Situation Report Thursday, August 5, 2018 - 0530 MT
- 5) Northern California Geographic Coordination Center Short Briefing 209 Summary Report - Whaleback Fire (Updated: August 5, 2018 5:52am)
- 6) Cal OES Daily Situation Brief - August 5, 2018
- 7) InciWeb Incident Update - Whaleback 8/5/2018 Update: <https://inciweb.nwcg.gov/incident/article/6048/45065/> (Updated: August 5, 2018)

Lions Fire - Madera County

Acres Burned [Change]	% Contained [Change]
7,549 (1) [+901]	65% (1) [+5%]
Start Date	Estimated Containment Date
June 1, 2018 (1)	August 25, 2018 (1,2)
Lead Agency(ies)	
Sierra National Forest (1)	
Initial Location	
7 miles southwest of Mammoth Lakes. (1)	



Structures Threatened	Structures Destroyed
None (2)	None (2)

Evacuations
None (2)

Other Infrastructure Threats
None listed

Projected Fire Activity
Continued spread to the North and West with group torching, spotting, short crown runs, and perimeter growth. Significant potential growth when/where factors align. Expect active fire behavior in thermal belts until after midnight. (1)
The area has seen approximately 50% tree mortality from bark beetles. (1)

Cause of the Fire
Lightning Strike (1)

Hashtags
#LionsFire

<p align="center">Fire Activity Map</p> <p>Source: National Interagency Fire Center Map (Aug 5, 2018)</p> <p>Additional Fire Maps: https://inciweb.nwcg.gov/incident/maps/5850/</p> <p>Information Line: lionsfireinformation@gmail.com or 925-817-0826</p>

Information Sources

- 1) InciWeb Incident Page - Lions Fire: <https://inciweb.nwcg.gov/incident/5850/> (Updated: August 5, 2018 3:45pm)
- 2) National Interagency Coordination Center Incident Management Situation Report Thursday, August 5, 2018 - 0530 MT

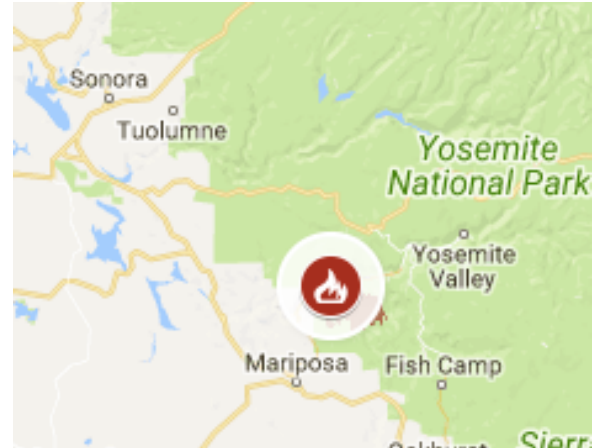
Ferguson Fire - Mariposa County

Acres Burned [Change]	% Contained [Change]
89,633 (1,2) [+20,193]	38% (1,2) [-3%]

Start Date	Estimated Containment Date
July 13, 2018 (1)	August 15, 2018 (4,6,9)

Lead Agency(ies)
Unified Command: U.S. Forest Service, Mariposa County Sheriff, National Park Service (4)

Initial Location
Highway 140 and Savages Trading Post (2); Highway 140 and Hite Cove, near El Portal (1)



Projected Fire Activity
Warm, dry conditions continue to cause active fire behavior which is challenging suppression efforts. (4)
Active fire behavior with running, short-range spotting and group torching. (6)

Cause of the Fire
Unknown (2)

State Emergency Proclamation
On 07/26/18, Governor Edmund G. Brown Jr. issued an emergency proclamation for Mariposa County due to the effects of the Ferguson Fire (8)

Hashtags
#fergusonfire

Impacted Zip Codes
93623, 95311, 95318 , 95321, 95338 , 95345, 95389

Nearby Zip Codes
93601, 93604, 93644

Fire Maps

Source: [National Interagency Fire Center Map \(August 5, 2018\)](#)

Source: [Cal OES 2018 Incident Map \(August 4, 2018 4:08am\)](#)

Continued on Next Page

Ferguson Fire - Mariposa County (continued)

Evacuations

	<p>Per Cal OES BOC Report - Total number of people:</p> <ul style="list-style-type: none"> Mandatory Evacuation: 414 (9) Advisory Evacuation: none (9)
Mandatory Evacuations	<ul style="list-style-type: none"> Anderson Valley area (2,4) Cedar Lodge (2,4) El Portal Trailer Court (2,4) Foresta (2,4) Old El Portal (2,4) Old Yosemite Road (2,4) Rancheria Flat (2,4) River Road from Briceburg to the last BLM campground (4) Savages Trading Post (2,4) Wawona (2,4) Yosemite Valley (2,4) Yosemite View Lodge (2,4) Yosemite West (2,4)
Access & Functional Needs Assistance	<p>Mariposa County Human Services has set up a dedicated line for residents with Access and Functional Needs (AFN) who may need assistance in evacuating. Toll free number is 1-833-423-0816. (8)</p>

Evacuation Centers / Shelters

		Shelter Count
Mariposa	New Life Christian Fellowship, 5089 Cole Rd - ARC (2,4,9,10)	45 (10)
Small Animal Shelter	<p>SPCA of Mariposa County: 5599 CA-49, Mariposa (9)</p> <p>Mariposa County Elementary School, 5044 Jones St, Mariposa (9)</p> <p>Central California Animal Disaster Team (CCADT) at 888-402-2238, ext. 700 (4)</p>	
Large Animal Shelter	Mariposa County Fairgrounds: 5007 Fairgrounds Rd, Mariposa (4)	

Road Closures

Major Roads	<p>Highway 120 is closed between Crane Flat and Big Oak Flat entrance (2)</p> <p>Hwy 140 is closed from 1.9 miles east of Midpines to the Cedar Lodge area (4)</p> <p>Big Oak Flat Road (Highway 120) from entrance of Yosemite National Park to Crane Flat. (4)</p> <p>Incline Road and Highway 140 from the entrance of Yosemite National Park to 1.5 miles east of Midpines, except to residents (2)</p> <p>Wawona Road (Highway 41) between Chilnualna Falls Road in Wawona and Bridalveil Falls parking lot in Yosemite Valley (2,4)</p> <p>Cal Trans Quick Maps: http://quickmap.dot.ca.gov</p>
Local Roads	<p>Anderson Valley Road (2,4)</p> <p>Foresta Road (2,4)</p> <p>River Road from Briceburg to the gate at Railroad Flat and all campground areas along Highway 140 (2,4)</p> <p>Summit Road (2,4)</p> <p>Old Yosemite Road (2,4)</p>

Continued on Next Page

Ferguson Fire - Mariposa County (continued)

Critical Infrastructure Impacts

Power	Transmission lines along Hwy 140 and Yosemite National Park remain threatened (8) 362 PG&E customers affected by power outage (9)
Water	Nothing listed

Structures	Threatened	Damaged	Destroyed
Residences	-	-	7 (8)
Other Minor Structures	-	-	3 (8)
Total	995 (4,9)	0 (4,9)	10 (4,6,8,9)

Injuries / Fatalities	Civilian	Firefighter
Injuries	-	11 (4,9)
Fatalities	2 from fire-related traffic collision (8,9)	2 (4,9)

Community Infrastructure Threats

Schools	Schools under mandatory evacuation: 1 public schools, no private school (9) California Department of Education expects impacted school districts to make final decisions regarding start of the new school year by August 8 (10)	
National Park	Indefinite Closure for Yosemite Valley, El Portal Road, Wawona Road, Big Oak Flat Road, Glacier Point, the Mariposa Grove of Giant Sequoias, the Merced Grove of Giant Sequoias, Wawona Campground, Crane Flat Campground, Tamarack Campground, and several other sections of the Park. Please visit www.nps.gov/yose for the most up to date information. (3)	
Post Offices	Post Offices - Closed	Alternate Locations
	El Portal Post Office, 5508 Foresta Road, 95318 (5)	Mariposa Post Office, 5109 Jessie St., 95338 (5)
	Yosemite National Park Post Office, 9017 Village Drive, 95389 (5)	Mariposa Post Office, 5109 Jessie St., 95338 (5)

Recovery

Recovery Meetings	First official recovery meeting is scheduled for 08/08/18 at 1:00pm, in the Mariposa County Administrative Building. (8)
Recovery Websites	Cal OES Statewide Wildfire Recovery Resources: http://wildfirerecovery.org Mariposa County Recovers Website: http://www.mariposacountyrecovers.org

Additional Information Sources

Ferguson Fire Info Line: (530) 377-6221
 Mariposa County Website: <http://www.mariposacounty.org>
 Mariposa County Sheriff's Office Facebook: <https://www.facebook.com/mariposacountysheriff/>
 CAL FIRE Madera-Mariposa-Merced Facebook: <https://www.facebook.com/CALFIREMMU/>

Continued on Next Page

Ferguson Fire - Mariposa County (continued)

Information Sources

- 1) Cal Fire Incident Page - Ferguson Fire: http://www.fire.ca.gov/current_incidents/incidentdetails/Index/2135 (Updated: August 05, 2018 7:17 pm)
- 2) InciWeb Incident Page - Ferguson Fire: <https://inciweb.nwcg.gov/incident/5927/> (Updated: August 5, 2018 6:29pm)
- 3) InciWeb Incident Update - Yosemite Valley and other Sections of the Park Remain Closed Indefinitely: <https://inciweb.nwcg.gov/incident/article/5927/45114/> (Updated: August 5, 2018 3:50pm)
- 4) InciWeb Incident Update - Ferguson Fire Evening Update for August 5, 2018: https://inciweb.nwcg.gov/photos/CASNF/2018-07-14-1535-FERGUSON-FIRE/related_files/pict20180705-205628-0.pdf (Updated: August 5, 2018 7:00pm)
- 5) USPS Service Disruptions: <http://about.usps.com/news/service-alerts/business-weather-updates.htm> (Updated: August 4, 2018 2:30pm)
- 6) National Interagency Coordination Center Incident Management Situation Report Thursday, August 5, 2018 - 0530 MT
- 7) Southern California Geographic Coordination Center - News and Notes - Ferguson Fire: <https://gacc.nifc.gov/oscc/news.php> (Updated: August 5, 2018 7:45pm)
- 8) Cal OES Daily Situation Report - August 5, 2018
- 9) Cal OES Business Operations Center Evening Report - August 5, 2018 4:00pm
- 10) American Red Cross Open Shelters Map: https://maps.redcross.org/website/maps/ARC_Shelters.html (Viewed: August 6, 2018 3:08am)

Eel Fire - Mendocino County

Acres Burned [Change]	% Contained [Change]
972 (1) [-28]	60% (1) [35%]

Start Date	Estimated Containment Date
July 31, 2018 (1)	August 6, 2018 (3) August 8, 2018 (4)

Lead Agency(ies)
Mendocino National Forest (1)

Initial Location
10 miles east of Covelo (1)



Structures Threatened	Structures Destroyed
40 residences (4)	3 residences (3,4)

Evacuations
Mandatory evacuations were lifted for the North M1 Road from the Eel River Station to the Indian Dick Station. An evacuation advisory remained in place for this area. (2)

Other Infrastructure Threats
Anthony Peak Lookout threatened (4)

Projected Fire Activity
On Sunday, minimal fire behavior was observed with mostly smoldering and creeping. A warming trend will return with no precipitation in the forecast. (2)

Cause of the Fire
Unknown (1)

Hashtags
#EelFire

Fire Maps
Source: National Interagency Fire Center Map (August 5, 2018)
Impacted Zip Codes: in non-defined zip code area
Nearby Zip Codes: 95428
Fire Information Life: 530-640-1168

Information Sources

- 1) InciWeb Incident Page - Eel Fire: <https://inciweb.nwcg.gov/incident/6083/> (Updated: August 5, 2018 7:15pm)
- 2) InciWeb Incident Update - Firefighters gain ground on Eel Fire, now 60 percent contained: <https://inciweb.nwcg.gov/incident/article/6083/45125/> (Updated: August 5, 2018 7:20pm)
- 3) National Interagency Coordination Center Incident Management Situation Report Thursday, August 5, 2018 - 0530 MT
- 4) Northern California Geographic Coordination Center Short Briefing 209 Summary Report - Eel Fire (Updated: August 5, 2018 5:55am)

Hot Creek Fire - Mono County

Acres Burned [Change]	% Contained [Change]
419 (2) [-17]	99% (2) [+4%]

Start Date	Estimated Containment Date
July 31, 2018 (1)	-

Lead Agency(ies)
Inyo National Forest (1)

Initial Location
8 miles northeast of the Town of Mammoth Lakes (1)

Structures Threatened	Structures Destroyed
None (2)	None (2)

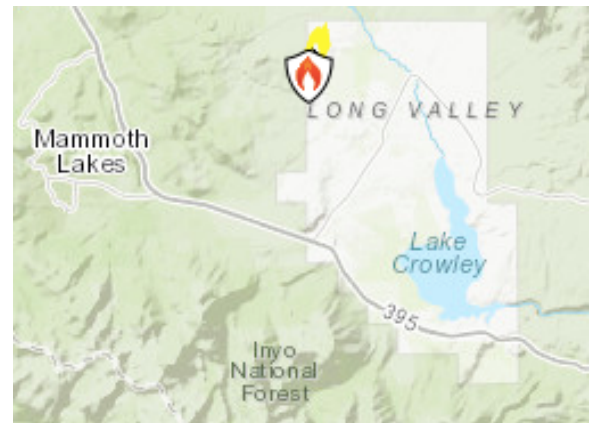
Evacuations
Advisories lifted as of 6pm 8/4 (1)

Other Infrastructure Threats
Road closures lifted as of 6pm 8/4 (1)

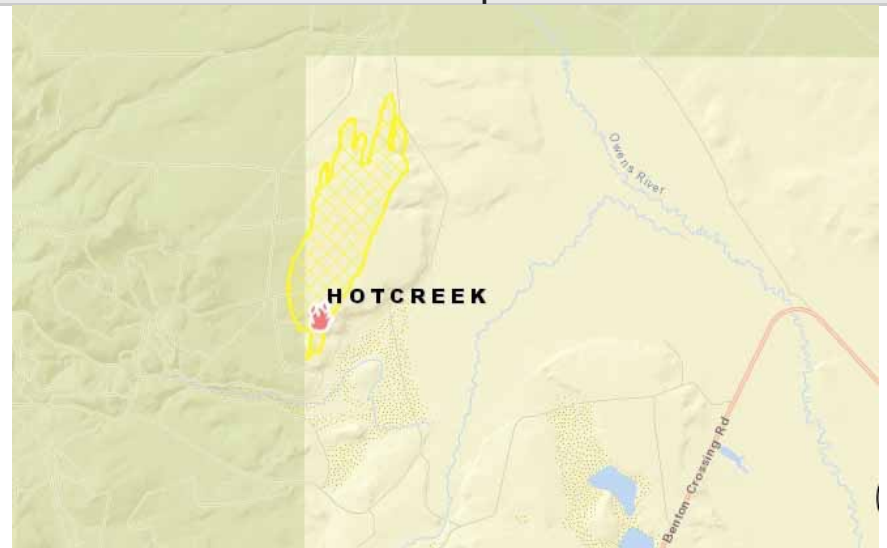
Projected Fire Activity
Low potential for spread (1) Minimal fire behavior with smoldering (1)

Cause of the Fire
Lightning (1)

Hashtags
#HotCreekFire



Fire Maps



Source: [National Interagency Fire Center Map](#) (August 2, 2018)

Impacted Zip Codes: in non-defined zip code area

Nearby Zip Codes: 93546

Information Sources

- 1) InciWeb Incident Page - Hot Creek Fire: <https://inciweb.nwcg.gov/incident/6075/> (Updated: August 4, 2018 8:55am)
- 2) National Interagency Coordination Center Incident Management Situation Report Thursday, August 5, 2018 - 0530 MT

Owens Fire - Mono County

Acres Burned [Change]	% Contained [Change]
338 (2) [+26]	99% (2) [+4%]

Start Date	Estimated Containment Date
July 31, 2018 (1)	August 4, 2018 (1)

Lead Agency(ies)
Inyo National Forest (1)

Initial Location
8 miles northeast of the town of Mammoth Lakes (1)



Structures Threatened	Structures Destroyed
None (2)	None (2)

Evacuations
Advisories lifted as of 6pm 8/4 (1)

Other Infrastructure Threats
Road closures lifted as of 6pm 8/4 (1)

Projected Fire Activity
Further spread not expected. (1) Minimal fire behavior with smoldering (1)

Cause of the Fire
Lightning (1)

Hashtags
#OwensFire

Fire Maps
Source: National Interagency Fire Center Map (August 2, 2018)
Impacted Zip Codes: in non-defined zip code area
Nearby Zip Codes: 93546

Information Sources

- 1) InciWeb Incident Page - Owens Fire: <https://inciweb.nwcg.gov/incident/6077/> (Updated: August 4, 2018 8:59am)
- 2) National Interagency Coordination Center Incident Management Situation Report Thursday, August 5, 2018 - 0530 MT

Cranston Fire - Riverside County

Acres Burned [Change]	% Contained [Change]
13,139 (1) [+0]	96% (1) [+0%]

Start Date	Estimated Containment Date
July 25, 2018 (1)	August 9, 2018 (1)

Lead Agency(ies)
San Bernardino National Forest (2)

Initial Location
off Highway 74 and Control Road, east of Hemet (2)



Structures Threatened	Structures Destroyed
None (3)	12 (5)

Evacuations
None (3)

Projected Fire Activity
Minimal fire behavior. (1)

Cause of the Fire
Arson (1)

Emergency Proclamations
On 07/26/18, Governor Edmund G. Brown Jr. issued emergency proclamations for Riverside county due to the effects of the Cranston fire. (4)
On 07/30/18, a Declaration of a Local Public Health Emergency from Riverside County was received due to the effects of the Cranston Fire. (4)

Additional Maps
https://inciweb.nwcg.gov/incident/maps/6032/

Hashtags
#CranstonFire

Fire Maps
Source: Cal Fire 2018 Incidents Map (July 30, 2018 11:46pm)
Impacted Zip Codes: 92544, 92549, 92561
Nearby Zip Codes: 92264
Fire Information: 909-383-5688 or 2018.Cranston@firenet.gov

Continued on Next Page

Cranston Fire - Riverside County (continued)

Road Closures

Major Roads	Highway 243 is open to all traffic with no restrictions. (1) Highway 74 will have pilot vehicle escorts between Lake Hemet and Mountain Center; and between Mountain Center and Valle Vista/Hemet. Motorists should expect up to 45 minute delays. (1)
-------------	---

Critical Infrastructure Impacts

Power	Full power was restored to customers of the Anza Electric Co-op at 8:55 p.m. on Friday, August 4. (3) Southern California Edison has completed all repairs to their lines. (3)
-------	---

Information Sources

- 1) InciWeb Incident Page - Cranston Fire: <https://inciweb.nwcg.gov/incident/6032/> (Updated: August 5, 2018 7:10pm)
- 2) Cal Fire Incident Page - Cranston Fire: http://www.fire.ca.gov/current_incidents/incidentdetails/Index/2169 (Updated: August 03, 2018 7:42pm)
- 3) InciWeb Incident Update - Final Evening Update for Cranston Fire - August 5, 2018: https://inciweb.nwcg.gov/photos/CABDF/2018-07-25-1500-Cranston/related_files/pict20180705-213909-0.pdf (Updated: August 5, 2018 7:00pm)
- 4) Cal OES Daily Situation Report - August 4, 2018
- 5) Southern California Geographic Coordination Center - Cranston Fire Sit Rep - August 4, 2018 5:36pm

Valley Fire - San Bernardino County

Acres Burned [Change]	% Contained [Change]
1,350 (1) [+0]	30% (1) [+0%]

Start Date	Estimated Containment Date
July 6, 2018 (1)	November 1, 2018 <i>Note - InciWeb site still lists containment date of July 21 (1)</i>

Lead Agency(ies)
San Bernardino National Forest (1)

Initial Location
Forest Falls, CA (1)

Structures Threatened	Structures Destroyed
None	None

Evacuations
None listed

Other Infrastructure Threats
None listed

Projected Fire Activity
<i>Approximately 70% of the fire's perimeter is steep, rocky, and inaccessible to firefighters. (1)</i> Experiencing minimal growth and remains in steep, inaccessible terrain. (1)

Cause of the Fire
Under Investigation (1)

Hashtags
#ValleyFire



Fire Maps



Source: [National Interagency Fire Center Map](#) (August 2, 2018)

Impacted Zip Codes: 92339

Nearby Zip Codes: 92399

Information Sources

- InciWeb Incident Page - Valley Fire: <https://inciweb.nwccg.gov/incident/5900/> (Updated: August 3, 2018 12:44pm)

Carr Fire - Shasta & Trinity Counties

Acres Burned [Change]	% Contained [Change]
160,049 (1) [+33,136]	43% (1) [+6%]

Start Date	Estimated Containment Date
July 23, 2018 (1)	August 10, 2018 (6,15,18)

Lead Agency(ies)
Unified Command: CAL FIRE Shasta-Trinity Unit, Redding City Fire and Whiskeytown National Park (1)

Initial Location
Hwy 299 and Carr Powerhouse Rd, Whiskeytown (1); Hwy 299 @ Carr Powerhouse Rd (2)



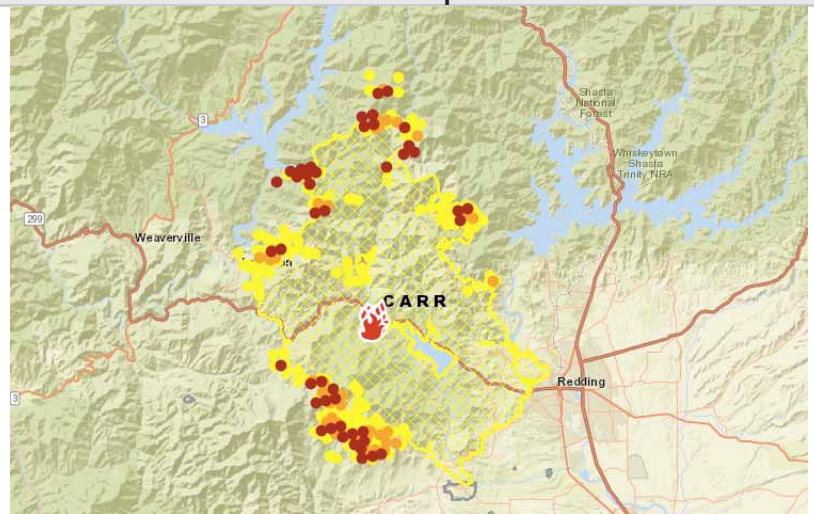
Snapshot Overview	
Structures Threatened	
Structures Destroyed	
Power Infrastructure	
Water Infrastructure	
Telecom Infrastructure	

Cause of the Fire
Mechanical Failure of Vehicle (1)

Emergency Proclamation
On 07/26/18, Governor Edmund G. Brown Jr. issued emergency proclamations for Shasta county due to the effects of the Carr fire. (17)
On 08/01/18, Shasta County proclaimed a local health emergency. (17)
On 08/04/18, a Presidential Major Disaster Declaration was approved for Shasta County: DR-4382-CA (17)

Hashtags
#CarrFire

Fire Maps



Source: [National Interagency Fire Center Map \(Aug 5, 2018\)](#)

Impacted Zip Codes: 96001, 96003, 96007, 96019, 96024, 96033, 96047, **96051**, 96052, 96079, 96087, 96089, 96095, **96099**

Nearby Zip Codes: 96002, 96048,, 96091, 96093

Additional Cal Fire Maps: http://cdfdata.fire.ca.gov/incidents/incidents_details_maps?incident_id=2164

Projected Fire Activity

Extreme fire behavior with uphill runs, crowning and spotting. (14)

Continued on Next Page

Carr Fire - Shasta County (continued)

Evacuations - Mandatory

Overview	<p>Per Cal OES BOC Report - Total number of people:</p> <ul style="list-style-type: none"> Mandatory Evacuation: 4,443 (18) Advisory Evacuation: none (18) Repopulated: 34,321 (18)
Shasta County	<ul style="list-style-type: none"> Community of French Gulch (2) WiskeyTown Park (2) Swasey Drive North from Lower Springs Rd to Hwy 299 (2) Placer Road West From Diggins Road (2) Igo Community (2) Keswick Community West of Keswick Dam (2) Cloverdale Rd from Placer Rd to Clear Creek Rd (2) Placer Rd at Platina Rd to Buell Rd which includes South Fork Rd, Zogg Mine Road, Jenny Bird Lane, Horse Canyon Rd and all residents West of Platina Rd between Placer Rd and Buell Rd (2) All areas on South Fork Road from Zogg Mine Rd to South Fork Road to include the areas of Bender Rd, Serenity Dr and Serenity Way (2)
City of Redding	<ul style="list-style-type: none"> Evacuations have been lifted everywhere in the city of Redding. (11)
Trinity County	<ul style="list-style-type: none"> Trinity/Shasta County Line at Buckhorn Summit Rd W. to Trinity Dam Rd. All roads w/in this area North of Hwy 299 (2) Hwy 299 at Trinity Dam Blvd continuing North to Hwy 3 including Deadwood Road, Jennings Gulch Road, Eastman Gulch Road & Lewiston Turn Pike Road. This is to include all residences and side streets east of Trinity Dam Blvd within the Township of Lewiston (2) Hwy 299 at Trinity Dam Road West to Poker Bar Rd (2) Trinity Dam Rd Blvd to South of the Trinity Dam including all residences within Lewiston area to Trail Drive, Red Lane, Old Highway, Lewiston Rd, Ohio Lane, Lowden Way, Ponderosa Pines, River Front Rd, Wellock Rd, S. Ponderosa Pine, Coffin Road, Dirt Rd, Benvenuto Way, Browns Mountain Rd, Mountain Springs Rd, Jobe Way, Steelhead Circle, Rebel Rd, Quail Point Rd, Lockhart Ranch Rd, Prut Rd, Upper Salt Flat Rd, Salt Flat Rd, Goose Ranch Rd, Dredger Lane, Bacham Lane, Partridge Lane, Shady Lane, River Rock Rd, Old Oak Rd, Gulch Rd & Lewiston Turn Pike Rd (3) All roads and streets west of Trinity Dam Blvd and east of Lewiston Road (2) Deadwood Road east of Trinity Dam Blvd (2) All residences on Baker Road including Cooper Gulch, Posey Road, Lakeview Terrace and Pine Cove Marina including Eagle Mountain Road (2)
Maps	<p>Carr Fire - Evacuation / Re-population map: http://nifc.maps.arcgis.com/apps/webappviewer/index.html?id=cdd41ecf8575458ea8851c6f76770d50</p> <p>Car Fire Activity Map: http://redding.maps.arcgis.com/apps/webappviewer/index.html?id=94b379a91e0f47cb91712da22f603d39</p>

Continued on Next Page

Carr Fire - Shasta County (continued)

Evacuation Centers / Shelters		Shelter Capacity
Anderson	CLOSED - Valley Christian Center, 2831 Freeman St (9)	CLOSED (9)
Corning	CLOSED - Rolling Hills Casino, 2655 Freeman Way (9)	CLOSED (9)
Palo Cedro	CLOSED - Foothill High School - 9793 Deschutes (7,9,18)	CLOSED (7,9,18)
Red Bluff	CLOSED - Vineyard, 738 Walnut St (9)	CLOSED (9)
Redding	Shasta College 11555 Old Oregon Trail - ARC (2,7,9,18,19)	54 (19)
	CLOSED - Cross Point Community Church 2960 Hartnell Ave (7,9,18)	CLOSED (7,9,18)
	CLOSED - Simpson College, 2211 College View Drive (7,9)	CLOSED (7,9)
	Grace Baptist Church- 3782 Churn Creek Rd - Independent Shelter (9)	unknown
	Hope Center, 1465 E. Cypress Ave - Independent Shelter	-
Susanville	Assembly of God Church, 473-465 Richmond Rd. N - Independent Shelter	
Weaverville	Trinity High School 321 Victory Lane - ARC (2,18,19)	31 (19)
AirBnB	Open homes Program - Carr Fire: https://www.airbnb.com/welcome/evacuees/carrfire	
Small Animal Shelter	Redding Rodeo Grounds, 715 Auditorium Drive Redding (18)	
	Haven Humane, 1816 CA-273, Anderson (2)	
	Shasta Livestock Auction, 3917 Main St., Cottonwood (17)	
	Colusa County Fair, 1303 10th St., Colusa (17)	
	Trinity High School, 321 Victory Ln., Weaverville (17,18)	
	Trinity County Animal Control Office, 563 Mountain View, Weaverville (9,17,18)	
Large Animal Shelter	Tehama District Fairgrounds, 650 Antelope Blvd, Red Bluff (9,18)	
	Tehama County Fairgrounds, 650 Antelope Blvd, Red Bluff (9,18)	
	Gibson Ranch, 8556 Gibson Ranch Rd., Elverta. Accepting horses, donkeys, and mules (9)	
	Intermountain Fair, 44218 A Street, McArthur. Accepting horses and cattle. (9)	
	Shasta Livestock Auction, 3917 Main St., Cottonwood (17,18)	
	Lassen County Fair, 195 Russell Ave., Susanville (17)	
	Colusa County Fair, 1303 10th St., Colusa (17)	
Lowden Park, Lowden Ln. & Washington St., Weaverville (17,18)		
Trinity High School, 321 Victory Ln., Weaverville (17,18)		

Transportation / Road Closures

Major Roads	Hwy 299 - closed from 4.4 miles east of the East Junction of SR 3 in Trinity County to Buenaventura Blvd in Redding, Shasta County (4) SR 273 - no closures (5) Cal Trans Quick Maps: http://quickmap.dot.ca.gov
-------------	---

Continued on Next Page

Carr Fire - Shasta County (continued)

Transportation / Road Closures (continued)

Local Roads - Shasta County	<p>Gas Point Road at Clear Creek Rd (2) Iron Mountain Rd at Hwy 299 (2) Platina Road at Bully Choop (2) Swasey Drive & Lower Springs Road (2) Placer Road at Diggins Road (2) Rockcreek Road at Hwy 299 (2) Granite Drive at Mavrick Drive (2) Keswick Dam Road just East of the Keswick Dam (2) Keswick Dam Blvd just West of Nash Road (2) 9000 Block of Skywalker Drive (2) Miners Gulch at Rock Creek Road (2) Middle Creek Road at Iron Mountain (2) Iron Mountain at Rock Creek Road (2)</p>
Local Roads - Trinity County	<p>Old Hwy at Poker Bar Road (2) Rush Creek Road East of China Grade (2) Trinity Dam Blvd at Fairview Marina Drive (2) Browns Mountain Road at Lewiston Road (2)</p>
Local Roads - Overview	<p>Shasta County Road Closures: https://www.co.shasta.ca.us/index/sheriff_index.aspx</p>
Rail	<p>Amtrak: Coast Starlight - Track work impacting train 14 in the mornings August 1-8, unknown if related to fire (6)</p>

Critical Infrastructure Impacts

Power	<p>Redding Electric Utility has replaced 129 power poles and restored service to all residents. (11) PG&E has restored service for more than 800 customers. (11) 1,260 customers remain affected (18) 115KV power lines threatened and 230 KV Western Area Power Administration (WAPA). Disruption of power will affect civilians along the northwest portion of California including Eureka, Weaverville and Fortuna. (15) Power infrastructure for all of Trinity County threatened; power lines serving the county come from the Trinity Dam and are held by wooden poles. (15) Fire line within two miles of Trinity Dam and power station (18) Redding Electric Utility (REU) power generation plant (15) Continued threat to 115kV and 230kV powerlines (16) Keswick Dam is restricted to minimal electrical output due to damaged powerlines (16) Three major Western Area Power Administration (WAPA) towers were destroyed (16) All Bureau of Reclamation power plants near the Carr Fire area are operational and there are no concerns about power quality, generation, or dam operations (18)</p>
-------	---

Continued on Next Page

Carr Fire - Shasta County (continued)

Critical Infrastructure Impacts (continued)

Gas	No remaining gas outages per Cal OES BOC report (18)	
Communications	2 cell site down, Cell On Wheels (COWs) deployed (17)	
Water	Water Treatment Plant	Status
	Surface Water Treatment Plant	System remains on boil water notice. (18)
	Keswick Water Treatment Plant	Operating on generator power (18)
	French Gulch Water Treatment Plant	Operating on generator power (18)
	Clear Creek Water Treatment Plant at Whiskeytown Dam	Operating on generator power (18)
	Centerville Water Treatment Plant	Operating on generator power (18)
	Buckeye Water Treatment Plant, City of Redding	operational and functioning normally
	City of Shasta Lake Water Treatment Plant	Operational
The Iron Mountain Mine situation has been mitigated. (15)		
Landfile	Shasta County Landfill threatened (15)	

Structures	Threatened	Damaged	Destroyed
Residential	1,217 (15)	190 (1,2,15)	1,080 (1,2,15)
Mixed Residential/Commercial	-	2 (15)	-
Commercial	12 (15)	26 (1,2,15)	24 (1,2,15)
Other Structures	-	60 (15)	500 (1,2,15)
Total	1,229 (2,18)	278 (18)	1,604 (18)
Maps	Structure Status Information Map: http://calfire-forestry.maps.arcgis.com/apps/PublicInformation/index.html?appid=5bbcbcd430ad45e5a38e6be155ef5fec		

Damage assessment is still underway - 100% complete within the Redding City limits. Overall field collection is 98% complete. (15)

Injuries / Fatalities	Civilian	Firefighter
Injuries	-	1 (15,18)
Fatalities	5 (17,18)	2 (1,15,17,18)

Continued on Next Page

Carr Fire - Shasta County (continued)

Community Infrastructure Threats

Hospitals	Patients' Hospital of Redding - no updated status since August 3 Mercy Medical Center Redding - Open (18)	
Schools	<p>Shasta County -</p> <ul style="list-style-type: none"> Schools under mandatory evacuation: 2 public schools, no private schools (18) Schools previously within evacuation zones/repopulated: 13 public schools and 5 private schools (18) <p>Trinity County -</p> <ul style="list-style-type: none"> Schools under mandatory evacuation: 1 public schools, no private schools (18) Schools previously within evacuation zones/repopulated: none (18) <p>Whisky town Environmental School - damage to outbuildings, full extent of damage still unknown. Summer camps canceled through 8/10/18 (18)</p> <p>Shasta union Elementary School - all playground, solar field , garden, greenhouse, and garage destroyed; some portable classrooms sustained damaged (18)</p> <p>Majority of schools have a concern about air quality and clean-up of toxic ash (18)</p> <p>California Department of Education expects impacted school districts to make final decisions regarding start of the new school year by August 8 (10)</p>	
Post Offices	Post Office - Closed	Alternate Location
	Igo Post Office, 6484 Placer Rd., 96047 (3)	Redding Main Post Office, 2323 Churn Creek Rd., 96002 (3)
	French Gulch Post Office, 14200 Main St., 96033 (3)	Downtown Redding Post Office, 1647 Yuba St., 96001 (3)
	Lewiston Post Office, 4391A Trinity Dam Blvd., 96052 (3)	Weaverville Post Office, 50 S. Miner St., 96093 (3)

Recovery

Local Assistance Center (LAC)	<p>Shasta High School, 2500 Eureka Wy., Redding. OPEN - August 2-8 from 9:00am - 7:00pm (2)</p> <p>List of Represented Agencies: http://211norcal.org/wp-content/uploads/2018/07/LAC-Represented-Agencies.pdf</p> <p>Language Assistance is available in Arabic, Cantonese, Mandarin, Farsi, French, ASL, a and Spanish (18)</p>
Disaster Response Center	Planned to open by no later than August 9, location to be announced (18)
Community Meeting	Community meeting being held Monday, August 6 at 6:00pm at the Lakehead Lions Club, 20814 Mammoth Drive, Lakehead, Ca (7)
Missing People & Check-Ins	Red Cross Safe & Well: https://safeandwell.communityos.org/cms/index.php
Missing & Found Pets	Haven Humane Society Facebook: https://www.facebook.com/HavenHumaneSociety/

Continued on Next Page

Carr Fire - Shasta County (continued)

Recovery (continued)

<p>Disaster Assistance</p>	<p>American Red Cross: All evacuees, or those who have damage to homes, are encouraged to call Red Cross at 844-236-0153 or drop-in to a local Red Cross shelter. The Red Cross will help set up a claim and direct to programs that can help. (13)</p> <p>FEMA: www.disasterassistance.gov or call the Disaster Survivors Line at 800-621-3362. Resources may include temporary shelter, food, first aid, low-interest loan for home or business repairs (through the Small Business Administration), and other disaster assistance. (13)</p> <ul style="list-style-type: none"> FEMA will deploy Disaster Survivor Assistance Teams for outreach and assistance in registering people within the next 48 hours (18)
<p>Distribution Center</p>	<p>Salvation Army Distribution Center</p> <ul style="list-style-type: none"> The general public can pick up what is needed at the Distribution Center daily, Monday-Saturday 9am-7pm, Sunday 2pm-7pm. (8) Resources available include: Household Supplies (Baby Food, Diapers/Wipes, Personal Hygiene) Cleaning Supplies, Basic Food Supplies (Water Bottles / Gatorade, Non-Perishable Food Items), Children’s clothing (8) The center also serves as a Cooling Center, space providing Emotional & Spiritual Care and restaurant-quality hot meals provided by Mercy Chefs 9am-7pm (8) Note: Donations are not being accepted at this location. <p>Lions Fire Relief Center</p> <ul style="list-style-type: none"> Distribution Center providing food, personal care items and fire clean-up supplies, open seven days a week, 9am-6pm at 110 Hartnell Ave., #60, Redding (10)
<p>Donations</p>	<p><i>Please do not send in-kind donations without first coordinating with the receiving agency. Unsolicited in-kind donations strain the system.</i></p> <p>California Volunteers Current Incidents Page: https://californiavolunteers.ca.gov/current-disasters/</p> <p>NorCal 211 Donations & Volunteers Page: http://211norcal.org/donations/</p> <p>Cal OES Business Operations Center - coordinating larger donations and support from the private sector: businessOP@caloes.ca.gov</p>
<p>Debris Removal General Guidelines</p>	<p>EPA - Dealing with Debris and Damaged Buildings: https://www.epa.gov/natural-disasters/dealing-debris-and-damaged-buildings</p> <p>Cal EPA - Fact Sheet: Protecting Public Health from Home and Building Fire Ash: http://calepa.ca.gov/wp-content/uploads/sites/34/2016/10/Disaster-Documents-FireAsh.pdf</p> <p>Department of Toxic Substances Control - Handling Ash, Debris and other Hazardous Materials from Burned Structures: http://www.dtsc.ca.gov/HazardousWaste/upload/Fire_Emergency_Guidance_FS_1.pdf</p> <p>Safe Cleanup of Fire Ash: https://www.arb.ca.gov/carpa/toolkit/emerg-response/safe-cleanup-fire-ash.pdf</p> <p>CA Department of Industrial Relations - Worker Safety and Health During Fire Cleanup: https://www.dir.ca.gov/dosh/wildfire/Worker-Health-and-Safety-During-Fire-Cleanup.html</p> <p>CA Department of Industrial Relations - Respiratory Protection During Fire Cleanup: https://www.dir.ca.gov/dosh/Fire_Resp_Protection.html</p>

Continued on Next Page

Carr Fire - Shasta County (continued)

Recovery (continued)

<p>Debris Removal Shasta County</p>	<p>On 08/01/18, Shasta County proclaimed a local health emergency. Shasta County is requesting assistance for CA state with debris removal. (17)</p> <p>No fire related debris shall be removed without prior inspection by the U.S. EPA, California Department of Toxic Substances Control or the Shasta County Environmental Health Division. (20)</p> <p>Properties with destroyed structure(s) from a wildfire are being offered a clean-up and debris removal service conducted by specialized work crews which are contracted and managed by County and State waste specialists. This program is being paid for with public funds. If property owners have a specified amount for debris removal in their insurance policy, they will need to provide the specified amount to the County. (20)</p> <p>Property owners must sign up for the debris removal program by completing a Right-of-Entry Form which allows access to their property to complete the removal work. (20)</p> <p>Shasta County - Asbestos and Hazardous Waste Service Providers: https://www.co.shasta.ca.us/docs/libraries/resource-management-docs/ehd-docs/shasta-county-asbestos-and-hazardous-waste-service-providers--revised.pdf?sfvrsn=5fc0fb89_0</p> <p>Shasta County - Health & Safety Concerns for property Cleanup: https://www.co.shasta.ca.us/docs/libraries/resource-management-docs/ehd-docs/shasta-county-health-and-safety-concerns-for-property-cleanup_revised.pdf?sfvrsn=f7c7fb89_0</p>
<p>Debris Removal City of Redding</p>	<p>In the City of Redding, Solid Waste has resumed normal trash pickup. No fire waste is to be placed in the cans on the curb. If you have no fire damage and are simply cleaning up ash, this can be bagged and placed in your gray trash receptacle. (12)</p> <p>The Transfer Station is currently accepting food waste at no additional charge to help those who are cleaning out refrigerators and freezers. (12)</p> <p>Fire waste is hazardous and needs to be inspected by a hazardous waste specialist prior to clean up. Inspections will be done by either California Department of Toxic Substances Control (DTSC) or another state or federal agency. Inspections may be done at any time, whether residents are at their property or not. When they have cleared the property, they will leave notification for the homeowner to begin the debris removal process. No debris removal should take place until DTSC has cleared the property for hazardous waste. (12)</p>
<p>Debris Removal Trinity County</p>	<p>Due to continued fire activity, we have been unable to service the Lewiston/Douglas City area routes. If we've missed your regular service, Residential customers may set out extra cans equivalent to their normal service next week, or receive a credit for the missed service. Commercial customers will receive a credit for the missed service. Because of the timing in the billing cycle, credits will be issued on the September billing. (21)</p>
<p>Insurance</p>	<p>California Department of Insurance - Wildfire Resources Website: http://www.insurance.ca.gov/01-consumers/140-catastrophes/WildfireResources.cfm</p> <p>California Department of Insurance - Resources to Help Recent Wildfire Victims: https://www.insurance.ca.gov/01-consumers/140-catastrophes/WildfireResources.cfm</p>
<p>Recovery Resource Lists</p>	<p>Cal OES Statewide Wildfire Recovery Resources: http://wildfirerecovery.org</p> <p>NorCal 2-1-1: http://211norcal.org/resources-for-evacuees/</p>

Continued on Next Page

Carr Fire - Shasta County (continued)

Additional Information Sources

Cal Fire	<p>Cal Fire Carr Fire Information Line : (530) 225-2510 Carr Fire Fatality Information Line: (530) 734-8762 Cal Fire Carr Fire Maps: http://cdfdata.fire.ca.gov/incidents/incidents_details_maps?incident_id=2164 Cal Fire Carr Fire News Releases Sign-up (Constant Contact Form): https://visitor.r20.constantcontact.com/manage/optin?v=001uWnjXQrYldC7E8KAawvX0dCXUeXRj0a6f7LMElwU5YeTfUg2D7lqgibRXyLgAPNUX2C9sYfN_cXRXolu5IzVk3xwzD9JxyL7iEqwBOn6yo%3D</p>
Cal OES	<p>Business Operations Center: BusinessOp@caloes.ca.gov (sending out morning and evening sit reps)</p>
Shasta County	<p>Nixle Alert Feed for the county: https://local.nixle.com/county/ca/shasta/ (NOTE - not actively being used for the fire) NOAA Watches & Warnings for the County: https://alerts.weather.gov/cap/wwaatmget.php?x=CAC089&y=1 Shasta County Code Red Alert Sign-Up: https://public.coderedweb.com/CNE/en-US/BFBDC5E730B Shasta County Sheriffs Office Facebook: https://www.facebook.com/Shasta-County-Sheriffs-Office-1527637610823075/ Shasta County Sheriffs Office Website: https://www.co.shasta.ca.us/index/sheriff_index.aspx Shasta County Environmental Health Division, 1855 Placer Street, Suite 201 Redding, CA 96001; Telephone (530) 225-5787</p>
City of Redding	<p>City of Redding Facebook: https://www.facebook.com/CityOfRedding/</p>
Trinity County	<p>NOAA Watches & Warnings for the County: https://alerts.weather.gov/cap/wwaatmget.php?x=CAC105&y=1</p>

Continued on Next Page

Carr Fire - Shasta County (continued)

Information Sources

- 1) Cal Fire Incident Page - Carr Fire: http://www.fire.ca.gov/current_incidents/incidentdetails/Index/2164 (Updated: August 05, 2018 7:03 pm)
- 2) Cal Fire Incident Update - Carr Fire: http://cdfdata.fire.ca.gov/pub/cdf/images/incidentfile2164_3885.pdf (Updated: August 5, 2018 7:00pm)
- 3) USPS Service Disruptions: <http://about.usps.com/news/service-alerts/business-weather-updates.htm> (Updated: August 4, 2018 2:30pm)
- 4) Cal Trans Current highway Conditions - SR 299: <http://www.dot.ca.gov/cgi-bin/roads.cgi?roadnumber=299&submit=Search> (Viewed: August 5, 2018 11:52pm)
- 5) Cal Trans Current Highway Conditions - SR 273: <http://www.dot.ca.gov/cgi-bin/roads.cgi?roadnumber=273&submit=Search> (Viewed: August 5, 2018 11:53pm)
- 6) Amtrak Service Alerts - Coast Starlight: <https://www.amtrak.com/alert/track-work-affects-coast-starlight-train.html> (Viewed: August 5, 2018 11:58pm)
- 7) Shasta County Sheriff's Office Website: https://www.co.shasta.ca.us/index/sheriff_index.aspx (Viewed: August 5, 2018 11:59pm)
- 8) Update From Bethel On The Carr Fire: <https://www.bethel.com/carrfire/> (Updated: July 29, 2018)
- 9) NorCal 211 - Evacuation Shelters, Centers, and Other Places to Stay: <http://211norcal.org/evacuation-shelters-centers-and-other-places-to-stay/> (Viewed: August 6, 2018 12:12am)
- 10) NorCal 211 - Carr Fire Incident: <http://211norcal.org/shasta/disaster-response/resources/> (Updated: August 5, 2018 8:10pm)
- 11) Shasta County Operational Area Emergency Operations Center Press Release - Progress Continues on Carr Fire Recovery: <http://211norcal.org/wp-content/uploads/2018/07/Shasta-PR-progress-8-5-18.pdf> (Updated: August 5, 2018)
- 12) Shasta County Operational Area Emergency Operations Center Press Release - Safety tips for returning home after evacuation: <http://211norcal.org/wp-content/uploads/2018/07/Shasta-PR-returning-home-after-fire-8-5-18.pdf> (Updated: August 5, 2018)
- 13) NorCal 211 - Resources for Those Affected by the Carr Fire: <http://211norcal.org/resources-for-evacuees/> (Viewed: August 6, 2018 12:33am)
- 14) National Interagency Coordination Center Incident Management Situation Report Thursday, August 5, 2018 - 0530 MT
- 15) Northern California Geographic Coordination Center Short Briefing 209 Summary Report - Mendocino Complex (Updated: August 5, 2018 5:58am)
- 16) Northern California Geographic Coordination Center - News and Notes - Carr Fire: <https://gacc.nifc.gov/oncc/news.php> (Updated: August 5, 2018 7:00pm)
- 17) Cal OES Daily Situation Brief - August 5, 2018
- 18) Cal OES Business Operations Center Evening Report - August 5, 2018 4:00pm
- 19) American Red Cross Open Shelters Map: https://maps.redcross.org/website/maps/ARC_Shelters.html (Viewed: August 6, 2018 3:08am)
- 20) Shasta County Department of Resource Management Environmental Health Division - HEALTH AND SAFETY CONCERNS FOR PROPERTY CLEANUP: https://www.co.shasta.ca.us/docs/libraries/resource-management-docs/ehd-docs/shasta-county-health-and-safety-concerns-for-property-cleanup_revised.pdf?sfvrsn=f7c7fb89_0 (Viewed: August 3 1:05am)
- 21) Trinity County Office of Emergency Services: <http://www.trinitycounty.org/index.aspx?page=441> (Viewed: August 6, 2018 4:30am)

Donnell Fire - Tuolumne County

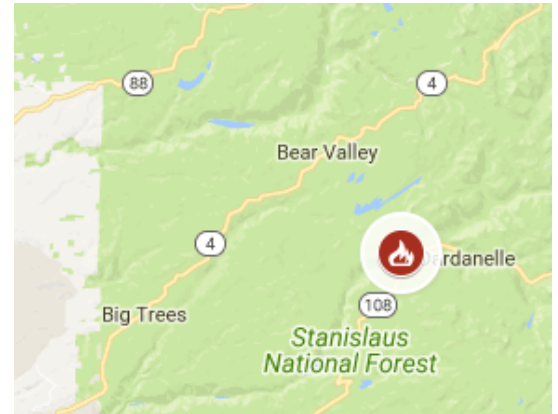
– Newly Added Fire –

Acres Burned [Change]	% Contained [Change]
6,000 (1)	2% (1)

Start Date	Estimated Containment Date
August 1, 2018 (1)	August 15, 2018 (1)

Lead Agency(ies)
Stanislaus National Forest (1)

Initial Location
NE of Donnell Lake (1)



Structures Threatened	Structures Destroyed
225 (2)	None (2)

Evacuations
<p>Mandatory: Eagle Meadow Road (5N01) and between Eagle Meadow Road and Kennedy Meadows, including all campgrounds and residences. (1)</p> <p>Evacuation Center: Seventh Day Adventist Church, 40 N Forest Rd, Sonora - ARC (3)</p>

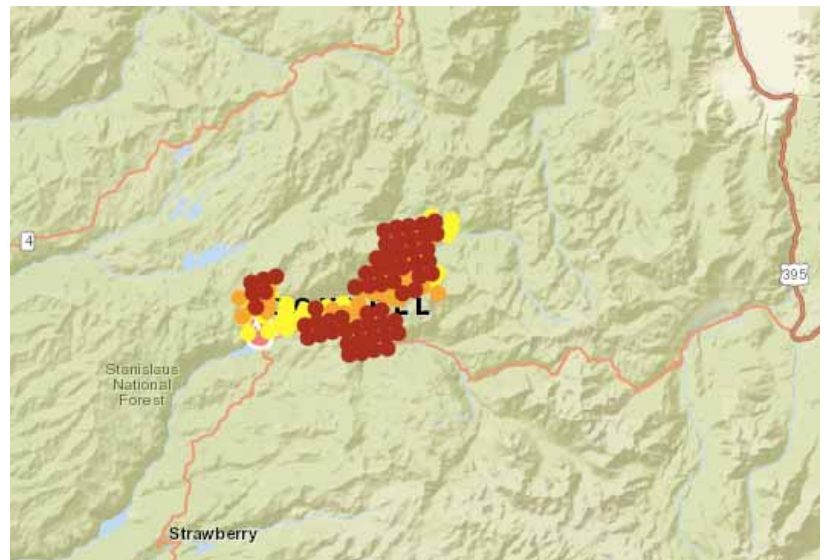
Other Infrastructure Threats
None listed

Projected Fire Activity
Continued active fire spread to the east within the Middle Fork Stanislaus River, NE in the Clarks Fork drainage and North on the western flank of the 2017 McCormick Fire. (1)

Cause of the Fire
Unknown (1)

Hashtags
#DonnellFire

Fire Maps



Source: [National Interagency Fire Center \(August 5, 2018\)](#)

Impacted Zip Codes: 95223, 95314

Nearby Zip Codes: 95364

Fire Information Line: (209) 272-5455
--

Fire Information Email: donnellfirestf1918@gmail.com or
--

Community Meeting

Monday August 6th at the Pinecrest Ampitheatre at 5 pm. Fire managers will be present to talk about the current fire conditions and answer questions from the public. (1)

Information Sources

- 1) InciWeb Incident Page - Donnell Fire: <https://inciweb.nwcg.gov/incident/6092/> (Updated: August 5, 2018 2:51pm)
- 2) Southern California Geographic Coordination Center - Donnell Fire Situation Report - August 4, 2018 3:49pm
- 3) American Red Cross Open Shelters Map: https://maps.redcross.org/website/maps/ARC_Shelters.html (Viewed: August 6, 2018 3:08am)

Downloadable Map Files

File	Link	Download Guide #	File Types
Air Quality Index (AQI)	https://airnow.gov/index.cfm?action=google_earth.index	B	KML Only
Cal Fire 2018 Statewide Fire Map	https://www.google.com/maps/d/viewer?mid=1HacmM5E2ueL-FT2c6QMVzoAmE5M19GAf	A	KML & KMZ
NASA FIRMS Map (fire activity)	https://firms.modaps.eosdis.nasa.gov/active_fire/#firms-shapefile	C	Shape & KML
Mendocino Complex Map	https://www.google.com/maps/d/viewer?mid=1rXgr1EznF_I0dkcxvH221qF5I29BGIWM&ll=39.14640142823378%2C-122.79371845039066&z=10	A	KML & KMZ

Download Instructions

Guide #	Instructions
A	<ol style="list-style-type: none"> 1) click on the three dots in the red header bar for the more options dropdown menu 2) select "Download KML" 3) Select whether you want a KML or KZM File
B	Step 1 under Instructions for Google Earth has the "click here" download link
C	Select the desired map file type and select the desired time period under "USA (Conterminous) and Hawaii"

Guide for Overlaying Zip Code Data in Google Earth

After opening KML or KZM file in Google Earth activate the Postal Code Boundary layer to see the zip codes. Postal Code Boundary layer is located in Google Earth under Layers -> More -> US Government -> Postal Code Boundary. Tip: to make it easier to see the zip code boundaries, turn off the roads layer.

Wildfire Resource Links

National Significant Wildland Fire Potential Outlook

https://www.predictiveservices.nifc.gov/outlooks/monthly_seasonal_outlook.pdf

Cal Fire Incident Page

http://www.fire.ca.gov/current_incidents

National Interagency Coordination Center Daily Situation Report (Fire)

<https://www.nifc.gov/nicc/sitreprt.pdf>

CalFire 2018 Wildfire Map

<https://www.google.com/maps/d/viewer?mid=1HacmM5E2ueL-FT2c6QMVzoAmE5M19GAf&hl=en&ll=37.421476393980626%2C-119.27200899999997&z=6>

National 7-Day Significant Fire Potential Map

<http://psgeodata.fs.fed.us/forecast/#/outlooks?state=map>

Air Quality Conditions - Fires Map

https://airnow.gov/index.cfm?action=topics.smoke_wildfires

CDC Wildfire Smoke Exposure

<https://www.cdc.gov/disasters/wildfires/smoke.html>

NOAA Hazard Mapping System Fire and Smoke Product

<http://www.ospo.noaa.gov/Products/land/hms.html>

Red Cross Disaster Shelter Locations

<http://www.redcross.org/get-help/disaster-relief-and-recovery-services/find-an-open-shelter>

USGS Emergency Assessment of Post-Fire Debris-Flow Hazards

https://landslides.usgs.gov/hazards/postfire_debrisflow/

The California Resiliency Alliance is a 501c3 non-profit empowering local and regional resiliency efforts through cross-sector information sharing and partnerships. The content in this brief provided for internal use by California Resiliency Alliance members. Copyright owners retain all copyrights to material referenced.