

Sustainable SFPUC Practices in the Water/Energy Nexus Energy Panel 2

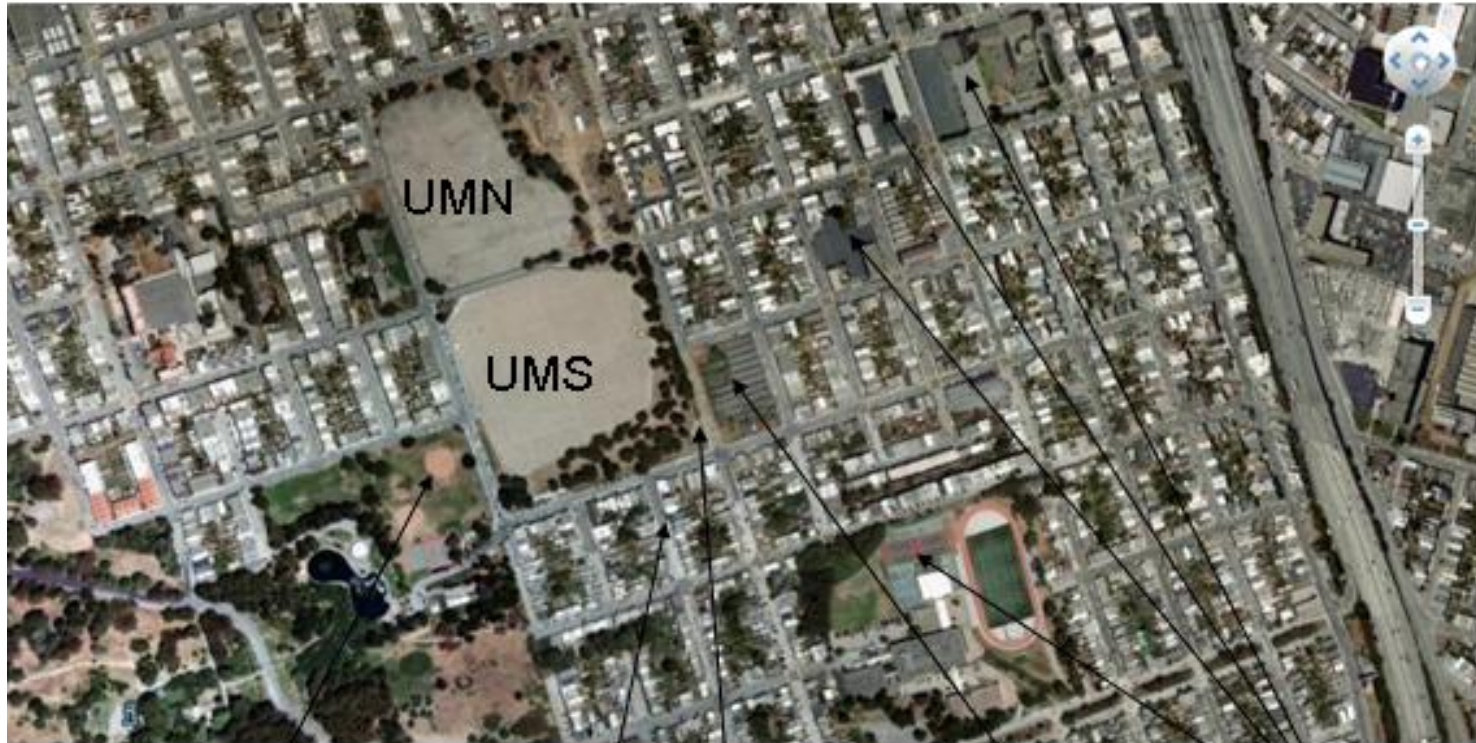
**October 24, 2013
Barbara Hale, Assistant General Manager,
SFPUC Power Enterprise**



San Francisco's Municipal Power Provider AND Community Aggregator

- **Serving 2,260 accounts**
 - City Agencies and tenants,
 - Customers on our Hetch Hetchy transmission and distribution system
 - Treasure Island (as the caretaker utility)
- **Generate 1.5 TWh of clean hydropower/year and 18 GWh of solar and other RPS-eligible power**
 - \$12.5M targeted for further renewable development in 10-year Capital Plan
 - \$110M targeted for hydropower improvements in 10-year Capital Plan
- **Provide energy efficiency services**
 - \$16M targeted for energy efficiency improvements in 10-year Capital Plan

Future Includes Small, In-pipe Hydro



Park

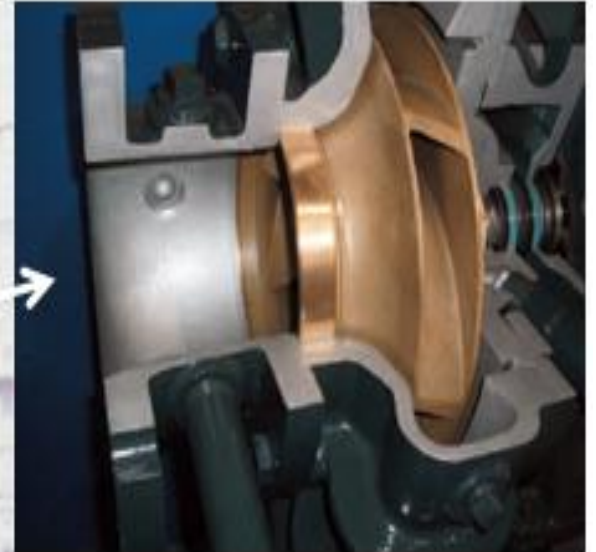
Residential

Hydro Site

Nurseries

Schools

Future Includes Small, In-pipe Hydro



University Mound, Capacity = 240 kW; 1,500,000 kWh/yr