



**2025
SPRING SUMMIT**

*New Reality: Adapting to Shifting
Federal, State, and Regional Priorities*

SPEAKER

Jessica Fain

*Director of Planning,
BCDC*



SPEAKER

Ryan Hernandez

*Principal Planner - Department of Conservation & Development,
Contra Costa County*



SPEAKER

Danielle Mieler

*Sustainability & Resilience Manager,
City of Alameda*



MODERATOR

Jan Novak

*Associate Planner & Scientist,
Port of Oakland*





San Francisco Bay Conservation and Development Commission (BCDC)

Regional Shoreline Adaptation Plan (RSAP)

Bay Planning Coalition Spring Summit

May 9, 2025

Jessica Fain, Director of Planning, BCDC

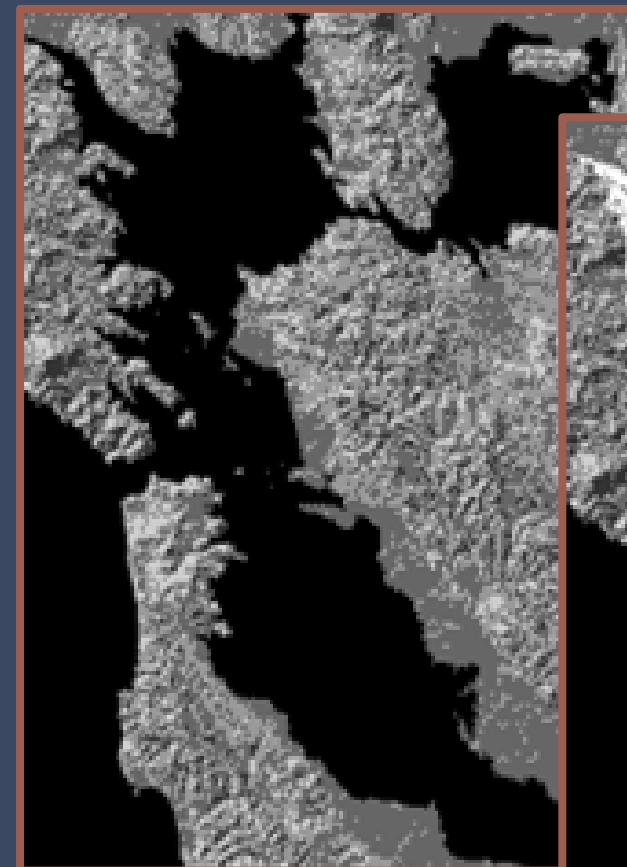




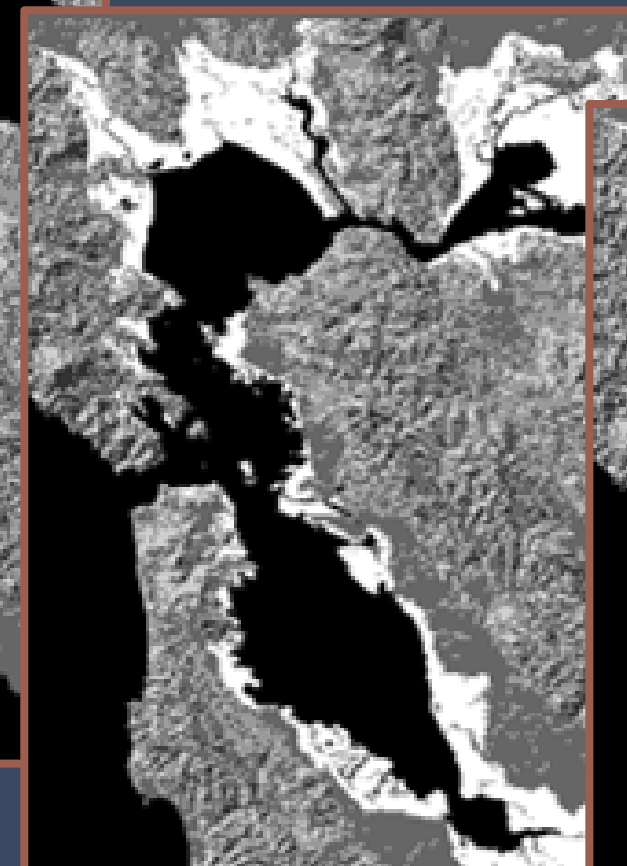
About BCDC

Our Mission

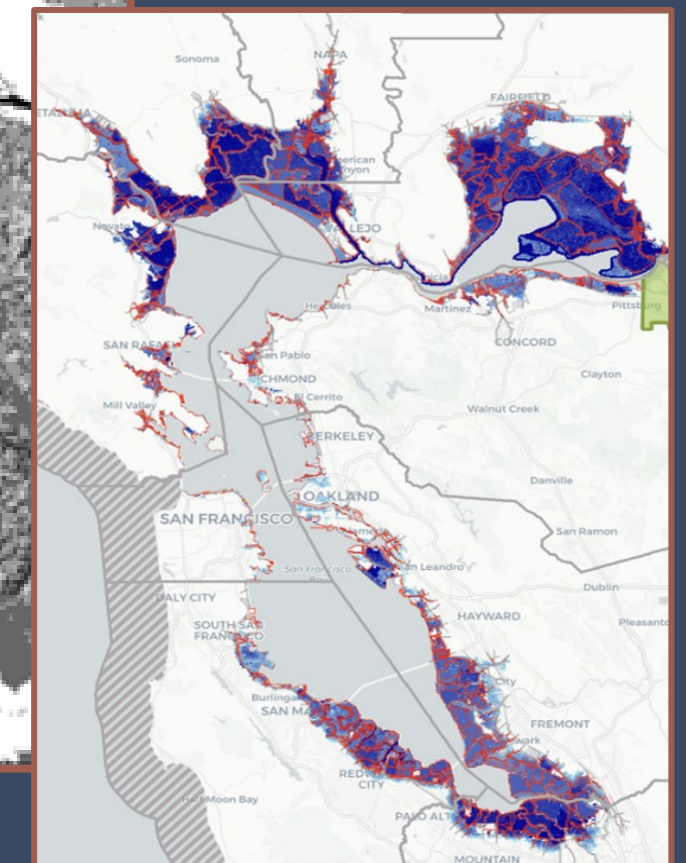
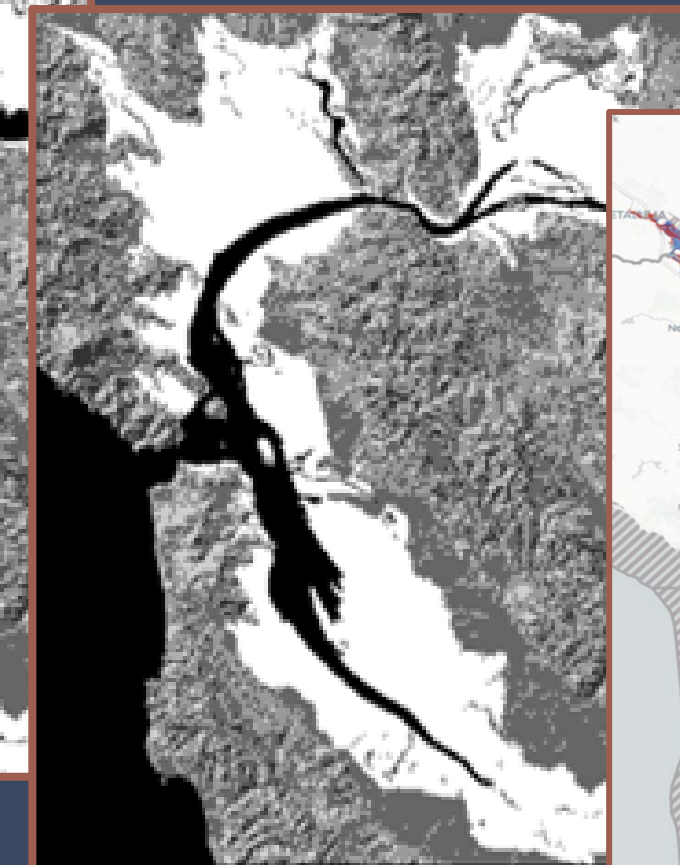
Protect and enhance San Francisco Bay and advance the Bay's responsible, productive, and equitable use for this and future generations as we face a changing climate and rising sea levels.



*The Bay in
1849*



*Bay fill in
1965*



*Sea level rise
of 6 feet by...*

Disproportionate risk:

1/3 of California's coastline
But **2/3** of the state's
economic damages from
sea level rise

What's at risk?*

- **20,000** acres of wetlands habitat
- **5 million** daily vehicle trips
- **60,000** daily rail commuters
- **83,000** existing housing units and new units
- **191,000** existing jobs and new jobs
- **28,000** socially vulnerable residents

What will it cost?**

- **\$230+ Billion** – Cost of Inaction
- **\$96 Billion** - Adaptation Need
- **\$6 Billion** - Anticipate Revenues

*ART Bay Area, 2020. Risks at 4' SLR.

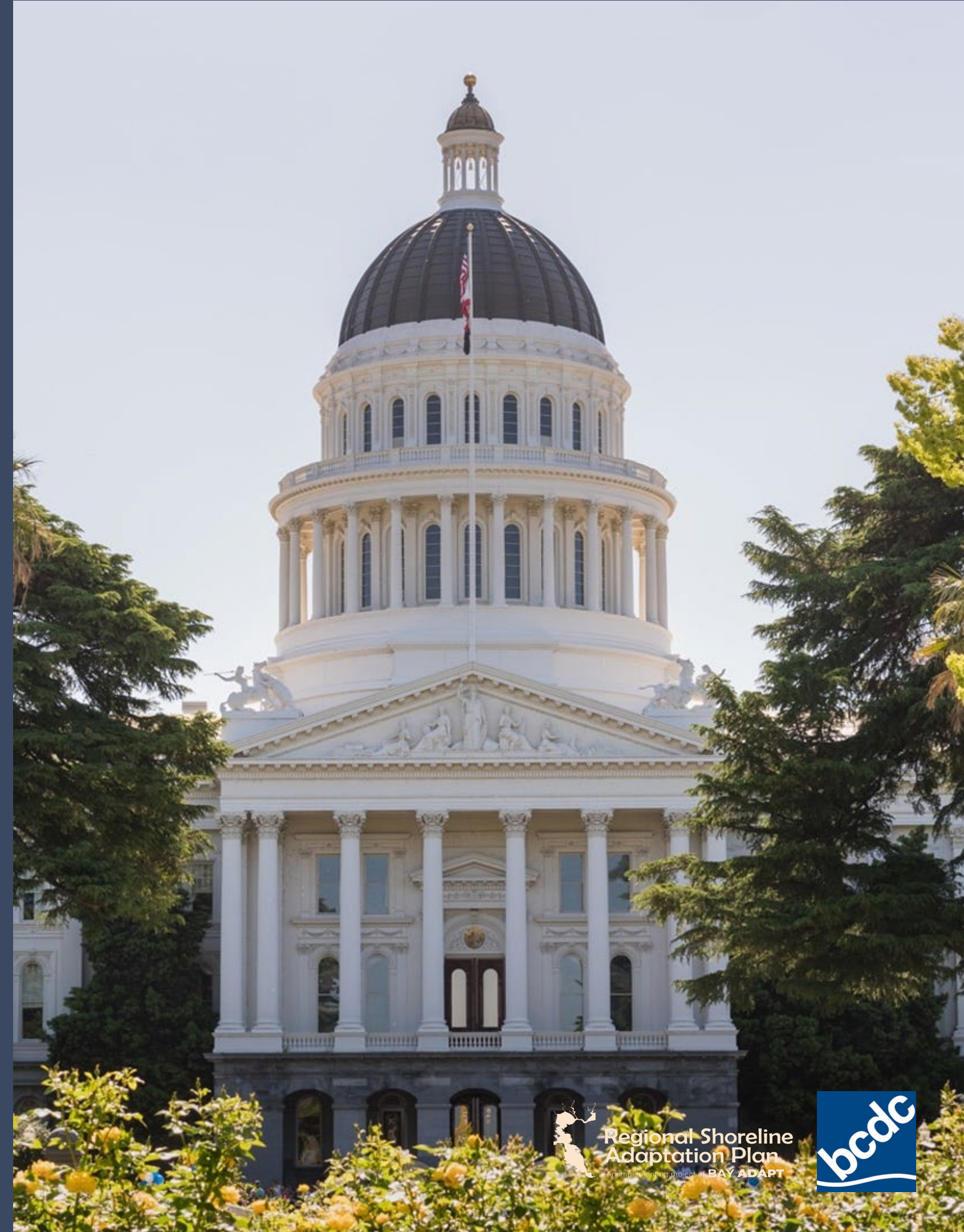
**Funding and Investment Framework, 2023, costs include assessed property values and select transportation infrastructure at 4.9' SLR

- **Coordinated** adaptation
- Priority resources to **frontline communities**
- Long-term **health of wetlands**
- **Strategic** implementation
- Common **standards and methods**
- Advance priority **projects** and **funding**
- Track and **measure progress**

Why do we need a regional approach to adaptation planning?

SB 272: Sea Level Rise Planning and Adaptation (Laird, 2023)

- Local governments to develop Subregional Shoreline Adaptation Plans by 2034
- BCDC to create Guidelines for developing Subregional Plans ←RSAP
- BCDC to review and approve or deny Subregional Plans
- Prioritized for State funding



Regional Shoreline
Adaptation Plan
BAY ADAPT



What is the Regional Shoreline Adaptation Plan?

A regional plan to address rising sea levels in the Bay and guides the creation of Subregional Plans

- ✓ One Bay Vision
- ✓ Strategic Regional Priorities
- ✓ Guidelines for Subregional Shoreline Adaptation Plans

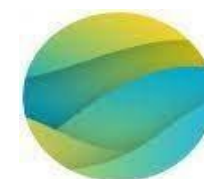
Regional Shoreline Adaptation Plan:

One Bay Vision,
Strategic Regional Priorities,
and Subregional Shoreline
Adaptation Plan Guidelines

December 2024



San Francisco
Bay Conservation
and Development
Commission (BCDC)



OCEAN
PROTECTION
COUNCIL



Regional Shoreline
Adaptation Plan
An implementing project of BAY ADAPT



One Bay Vision

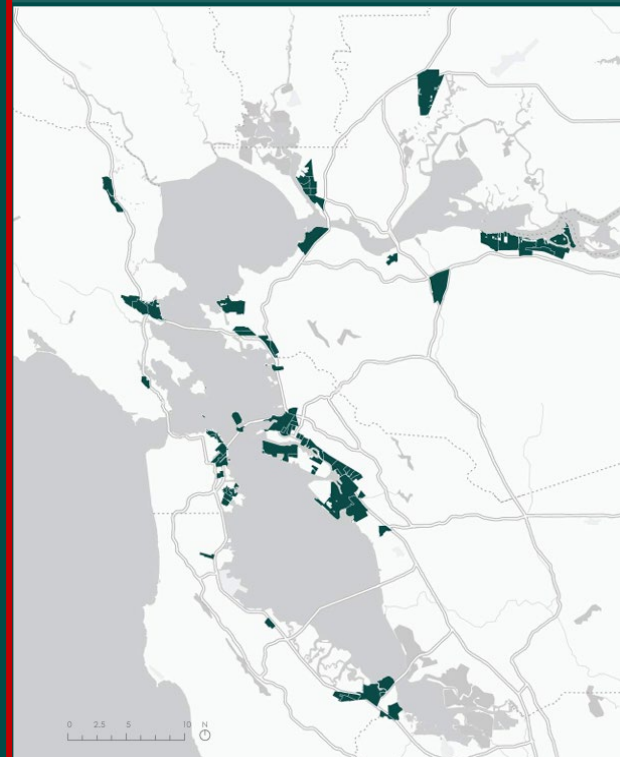
As sea levels rise, the Bay Area's diverse communities come together to transform how we live, work, plan, and adapt along our changing shorelines...

- . **Communities are healthy and vibrant**
- . **Healthy Baylands ecosystems thrive.**
- . **Places are designed for changing shorelines.**
- . **Critical services are reliable.**
- . **The Bay shoreline is accessible to all.**
- . **Safe and reliable transportation connections the region.**
- . **People and ecosystems are safe from contamination risks.**
- . **Regional collaborations drive efficient and effective adaptation.**

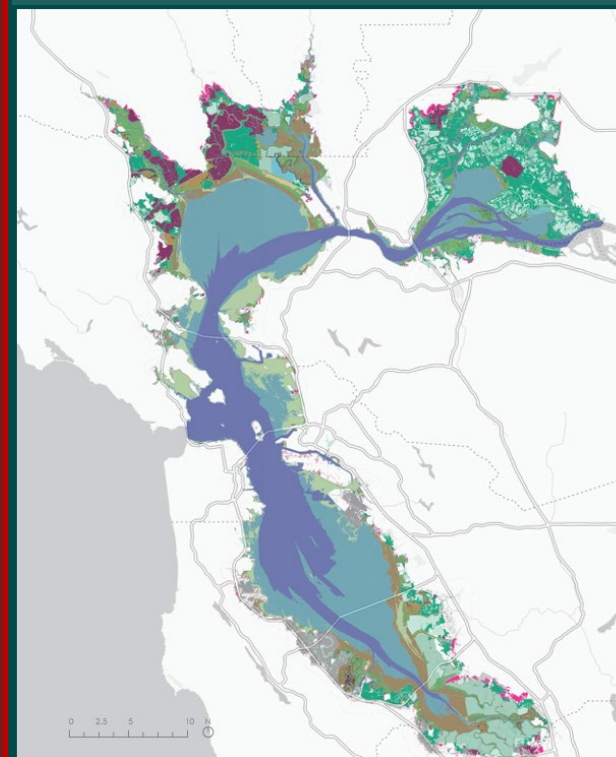
Strategic Regional Priorities

Key regional
challenges to be
addressed together
across multiple
jurisdictions

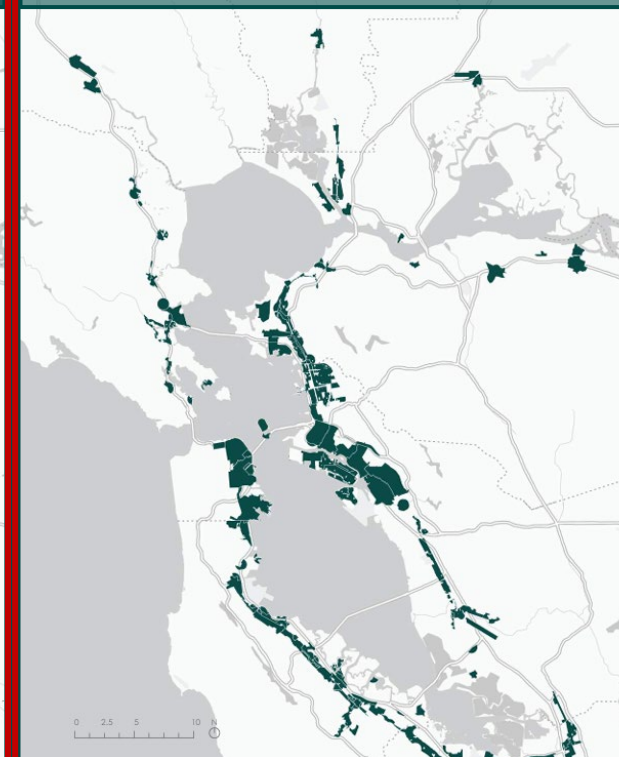
Reduced
involuntary
displacement risk



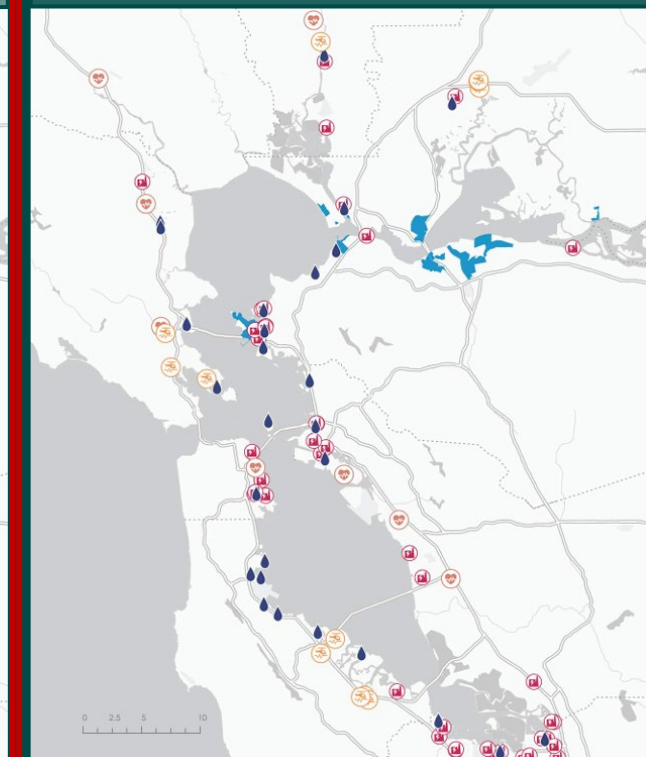
Complete and
connected
ecosystems



Safe and
strategic growth
and density



Reliable critical
and emergency
services



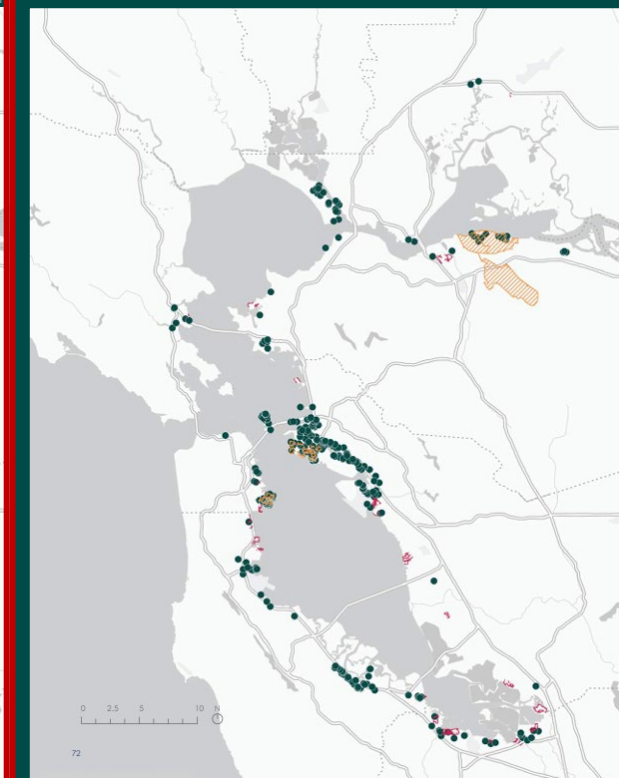
Connected
regional shoreline
access



Regional
movement of
people and goods



Clean
communities to
improve EJ



Cross-
jurisdictional
flood risk
reduction



RSAP Subregional Plan Guidelines

Plan Element Requirements

A

Planning Process

B

Existing Conditions

C

Vulnerability Assessment

D

Adaptation Strategies and Pathways

E

Land Use and Policy Plan

F

Project Implementation and Funding

G

Project List

Minimum Standards



Coastal Flood Hazards and
Sea Level Rise Scenarios



Minimum Categories
and Assets



Equity Assessment



Adaptation Strategy
Standards

Adaptation Strategy Standards

 **READ THESE!**



Who is required to create a Subregional Plan?

- Cities and counties within BCDC's jurisdiction
- *Jurisdictions not in BCDC's jurisdiction but impacted by short-term coastal flood hazards and therefore likely planning partners

Counties with BCDC Jurisdiction	Cities with BCDC Jurisdiction or impacted by short-term coastal hazards	
Alameda	Alameda Albany Berkeley Emeryville Fremont	Hayward Newark Oakland San Leandro Union City
Contra Costa	Concord* El Cerrito* Hercules Martinez	Pinole Pittsburg* Pleasant Hill* Richmond
Marin	Belvedere Corte Madera Larkspur Mill Valley Novato	Ross* San Rafael Sausalito Tiburon
Napa	American Canyon	Napa*
San Francisco	San Francisco	
San Mateo	Belmont Brisbane Burlingame East Palo Alto Foster City Menlo Park	Millbrae Redwood City San Bruno* San Carlos San Mateo South San Francisco
Santa Clara	Milpitas* Mountain View Palo Alto	San Jose Santa Clara* Sunnyvale
Solano	Benicia Fairfield*	Suisun City Vallejo
Sonoma	Petaluma	

Subregional Plans: Who's involved?

- May include a single city or county, multiple jurisdictions, or an Operational Landscape Unit (OLU)
- Flexibility to meet cities where they are
- Cross jurisdictional collaboration is key
- Special districts should partner with jurisdictions
- Formal review and approval process



Funding and support are available today!

Senate Bill 1 Grant Program

- ✓ Grants to develop SLR adaptation plans and projects
- ✓ Applications accepted on a quarterly rolling basis
- ✓ Next deadline is July 3

Technical Assistance for SB1 Grants

- ✓ Understanding grant requirements
- ✓ Grant writing review
- ✓ Support budget development
- ✓ Assessing stakeholders
- ✓ And more!

If you have any questions, please send an inquiry to OPCSB1TA@coastal-quest.org.



Apply for technical assistance for the SB1 Grant Program by scanning the QR code or following this link:
<https://opc.ca.gov/sb-1-funding/>

BCDC Resources - coming soon!

RSAP Atlas

- ✓ Maps
- ✓ Datasets for download
- ✓ Jurisdiction-specific reports

Local Assistance Program

- ✓ BCDC Liaisons
- ✓ Templates
- ✓ Shoreline Leadership Academies
- ✓ Resources
- ✓ Tracking Tool

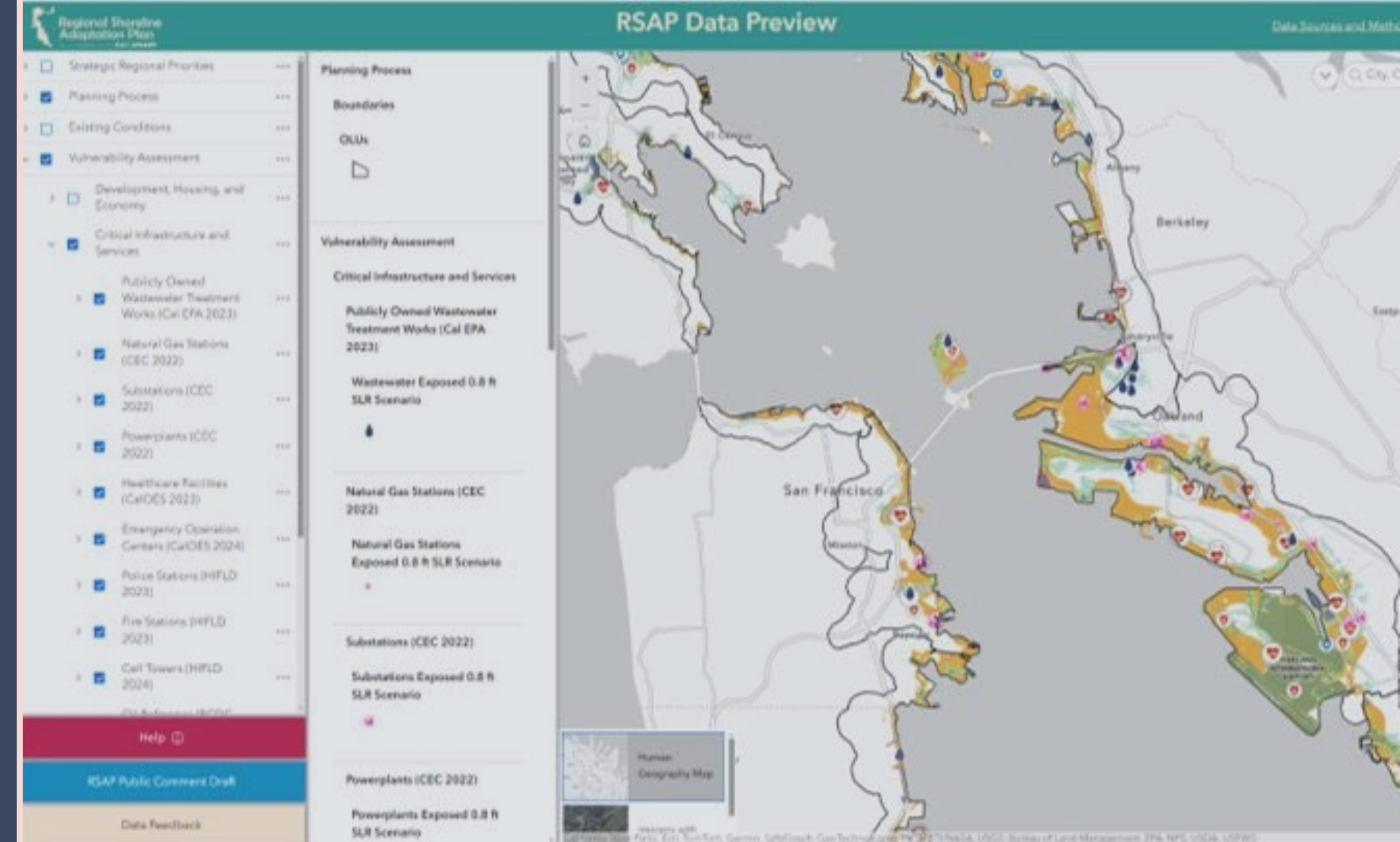


Photo by Karl Nielson

How can I get involved?

1. Get to know the RSAP!
2. Apply for funding from OPC
3. Join our Mailing List: [Sign Up – Bay Adapt](#)
4. Attend learning events this summer
5. Contact our staff liaisons
6. Talk to your city / county leaders

www.bcdc.ca.gov/local-sea-level-rise-plans/



Apply for Funding!



Learn more about the SB1 Grant Program by scanning the QR code or following this link: <https://opc.ca.gov/sb-1-funding/>

Thank you!

Jessica Fain, Planning Director

Jessica.Fain@bcdcc.ca.gov

Jaclyn Perrin-Martinez, Program Manager

Jaclyn.perrin-martinez@bcdcc.ca.gov



**Regional Shoreline
Adaptation Plan**
An implementing project of BAY ADAPT



Regional Shoreline Adaptation in Contra Costa County

Bay Planning Coalition Spring Summit
May 9, 2025

Contra Costa County's Shoreline

- 1.16 million people live in the county
- 90 miles of shoreline
- Extends from the San Francisco Bay to the Sacramento-San Joaquin Delta
- BCDC & Delta Stewardship Council jurisdiction



Contra Costa Resilient Shoreline Plan

County Awarded \$1,499,285 through Ocean Protection Council SB 1 Grant Program

Plan covers entire 90-mile shoreline from Bay to Delta

- Focus on impacted communities
- Coordinating and organizational role for local plans in alignment with BCDC RSAP guidelines
- Explores natural and constructed infrastructure

Phase 1: Community Visioning

- Participatory community engagement campaign
- Visioning workshop series
- Inventories of shoreline parcels and existing planning efforts

Phase 2: Data/Information Gathering

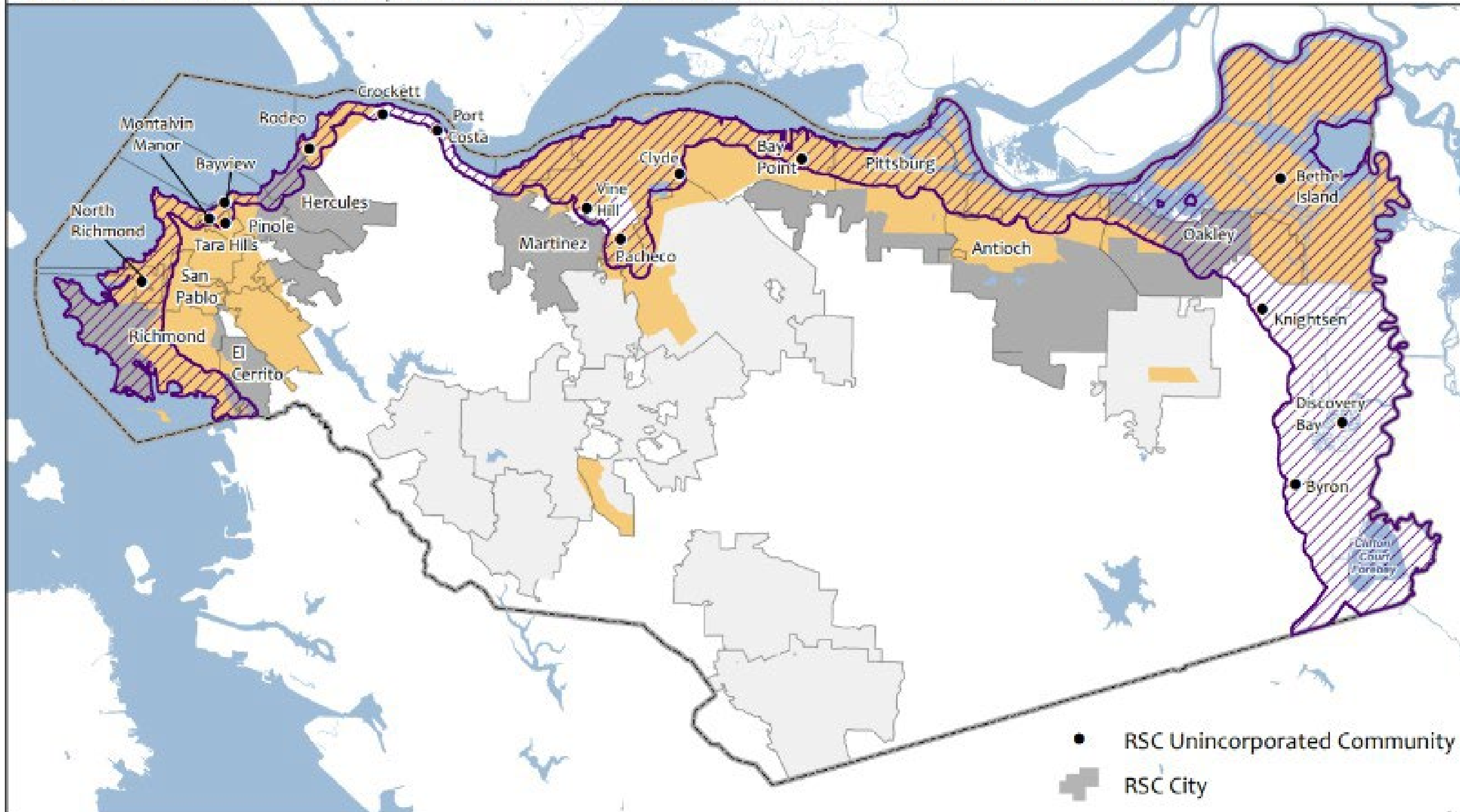
- Strategic update to County's existing vulnerability assessments

Phase 3: San Francisco Bay Shoreline Adaptation Plans

- Adaptation pathways and priority projects workshop series
- Plan will include adaptation pathways, implementation actions, partnership needs, financing strategies, and metrics

Contra Costa Resilient Shoreline Coalition (RSC)

Resilient Shoreline Project Area and Environmental Justice Communities



Resilient Shoreline Project Area

The Resilient Shoreline Project Area is based on the Operational Landscape Units (OLU) for the San Francisco Bay Area developed by the San Francisco Estuary Institute. This data was not available for the Delta portion of the County. Staff drafted an approximation of the upland boundary of the OLU for the Delta portion of the County and will require further refinement.

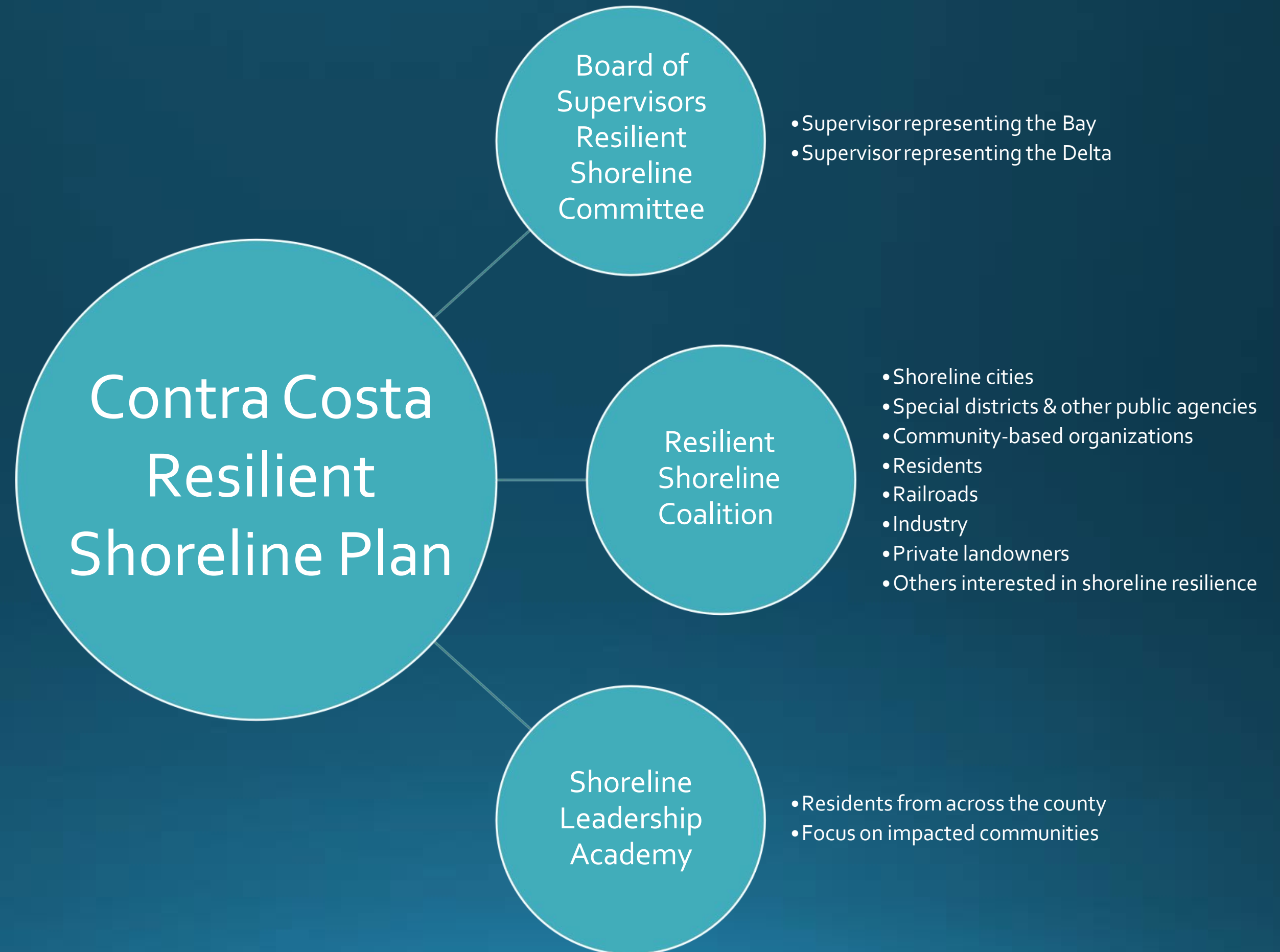


Environmental Justice Community

Environmental Justice Communities are defined as any community meeting California EnviroScreen 4.0 designations or AB 1550 designations. The data was downloaded from California Environmental Protection Agency (Cal EPA) website.



The County as a Convener and Facilitator



Contra Costa Resilient Shoreline Committee



- Board of Supervisors' committee that focuses on sea level rise resilience and adaptation planning and implementation
 - Chair – Supervisor Diane Burgis, District III
 - Vice Chair – Supervisor John Gioia, District I

Resilient Shoreline Coalition

Goal: Coordinate and align efforts to advance Contra Costa shoreline resilience

Involvement Based on Capacity



Level 1

Stay informed via email and meetings as needed/requested.



Level 2

Engage in the development of Contra Costa Resilient Shoreline Plan (meetings, workshops, curriculum development). Provide input on impact of Contra Costa Resilient Shoreline Plan to own organization.



Level 3

Incorporate Contra Costa Resilient Shoreline Plan into organization's own work.



Contra Costa Shoreline Leadership Academy

- **Goal: Build capacity in residents to participate in sea level rise planning processes.**
 - 18-20 Participants from across Contra Costa County
 - 4 hours every other Saturday for 6 months, starting fall 2025
 - Partnership with Contra Costa County, San Francisco Bay Conservation and Development Commission, The Exploratorium, The Watershed Project, Contra Costa Resource Conservation District, and Delta Stewardship Council





Let's Connect

- [Contra Costa Resilient Shoreline Committee Webpage](#)
- [Contra Costa Resilient Shoreline Plan Webpage](#) - Sign up for updates!
- Contact Ryan Hernandez with questions.
 - Ryan.Hernandez@dcd.cccounty.us
 - (925) 655-2919

Adapting to Sea Level Rise: The Oakland Alameda Adaptation Committee (OAAC)

**Bay Planning Coalition Spring Summit
May 9, 2025**





Oakland Alameda Adaptation Committee (OAAC):

A coalition of shoreline communities, agencies and stakeholders working to coordinate the Oakland Alameda sub-region flood and adaptation projects to protect and restore water quality, habitat, equity, transportation and community resilience.



OAAC Adapt: Project Partners

Agency Partners



Community Partners



Consultants



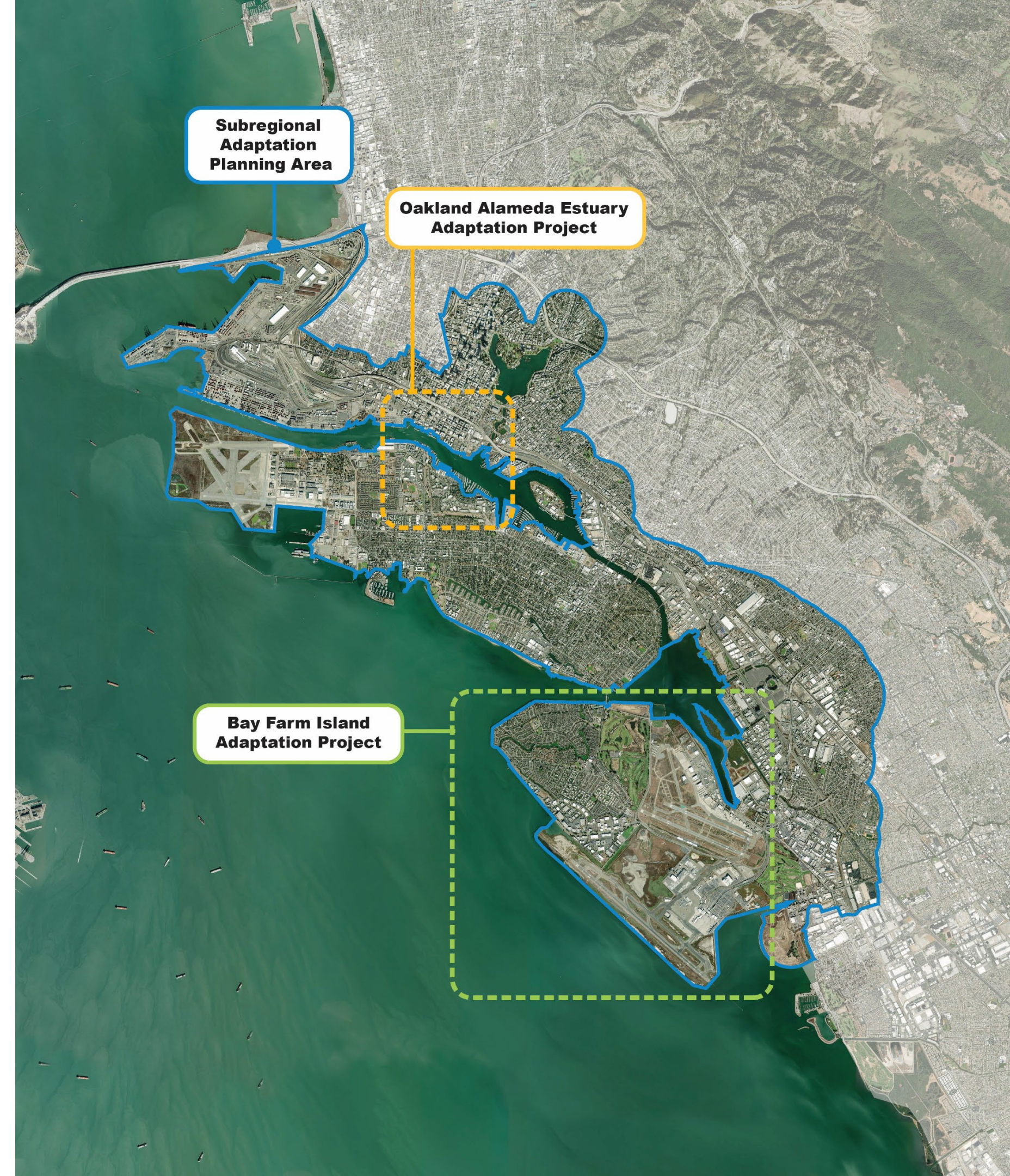
OAAC Subregional Goals

1. **Protect** Oakland-Alameda sub-region from the negative effects of expected sea level, inland flooding, and groundwater rise and liquefaction
2. Identify and develop opportunities for **multi-benefit** adaptations strategies
3. Avoid negatively affecting **neighboring subregions** through protection and adaptation measures
4. Utilize an **adaptation pathways** approach to address different SLR thresholds and time horizons. Identify near, mid, and long-term adaptation strategies
5. Enhance **transportation, recreation** corridors, **bay access**, and the San Francisco **Bay Trail**
6. Preserve and increase **open space** where possible
7. Improve subtidal, intertidal, transitional, and upland habitat with **nature-based solutions**
8. Improve **air quality**



OAAC Adapt Projects

- The **Subregional Adaptation Plan** is a long-term plan that details preliminary strategies and pathways for shoreline communities to take as the climate and shorelines change over time
- The **Oakland Alameda Estuary Project** is a near-term sea level rise adaptation design concept to address increased coastal, stormwater, and groundwater flooding for up to two feet of sea level rise over the coming decades
- The **Bay Farm Island Adaptation Project** is a near-term sea level rise adaptation design project to address compound flooding and up to two feet of sea level rise and long-term planning coordination.



City of Alameda Climate Adaptation and Hazard Mitigation Plan

Outlines areas prioritized for near- and mid-term flood risk reduction which will be addressed in the Subregional Adaptation Plan

1
6 City Wide

Strategies for Location-Based Priority Flooding

Flood Risk Reduction Measures (0 - 3 years)

1. Citywide Basement Flooding Campaign
2. Golf Course and Eastshore / Central Pump Station Drainage Study
3. Lagoon Maintenance
4. Shoreline Maintenance
5. South Shore Geomorphology / Ecological Study
6. Stormwater Management

Near-term (3 - 10 years)

7. Bay Farm Island Adaptation Study
8. De-Pave Park Flood Risk Reduction and Adaptation
9. Estuary Adaptation Project
10. Mudflat and Eelgrass Restoration Pilot Project
11. Shoreline Drive / Crown Beach Adaptation
12. State Route 61 / Doolittle Drive Adaptation

Mid-term (10 - 30 years)

13. Alameda Point Adaptation
14. Bridgeview Isle and Towata Park
15. Eastshore Drive Flood Risk Reduction
16. Shoreline Drive Stormwater Improvements





Photo credit: Maurice Ramirez

Learn more: www.alamedaca.gov/OaklandAlamedaAdaptationCommittee

