

May 14, 2024

*Bay Planning Coalition Spring Summit*

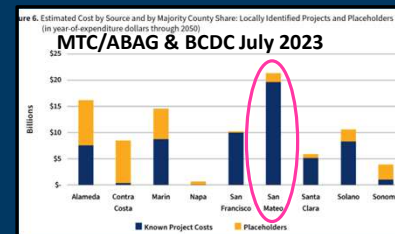
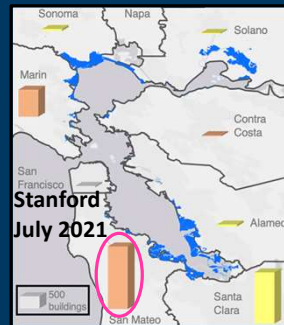
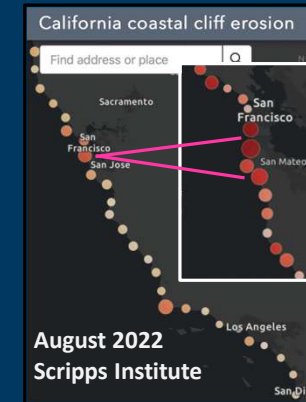
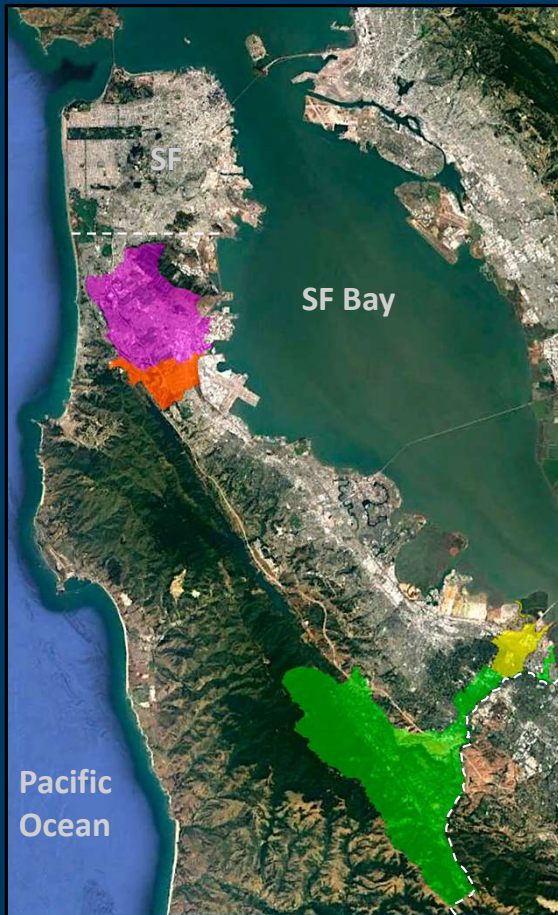
San Mateo County Flood and Sea Level Rise Resiliency District

Len Materman, CEO

[info@OneShoreline.org](mailto:info@OneShoreline.org)

**OneShoreline**  
Building Solutions for a Changing Climate

# OneShoreline Background



Climate change is a transformative challenge that local jurisdictions were not well-positioned to address individually.

State law created OneShoreline on Jan. 1, 2020 as the first independent government agency in CA to plan and build regional resilience related to the water-related impacts of climate change: sea level rise, flooding, groundwater rise, coastal erosion, as well as stormwater & water supply.

A holistic approach to:  
**THREATS**  
**GEOGRAPHY**  
**OBJECTIVES**



# OneShoreline Priorities

- Plan land use and infrastructure for future climate-driven conditions
- Advance projects that align long-term resilience across jurisdictions
- Alert people to, and reduce the impacts of, extreme storms
- Develop ongoing funding to sustain efforts for resilience today and long-term

One Shoreline, Brisbane, and Caltrans Baylands/Hwy 101

OneShoreline/Colma Creek & San Bruno Creek

US Coast Guard Air Station

SFO

OneShoreline/Burlingame, Millbrae & San Mateo

OneShoreline/Redwood Shores

OneShoreline Bayfront Ca & Marsh Ro

OneShoreline's Bay Program to align and connect the protection and enhancement of the entire 53 miles of San Mateo County's shoreline

SAFER Project (SFCJPA)

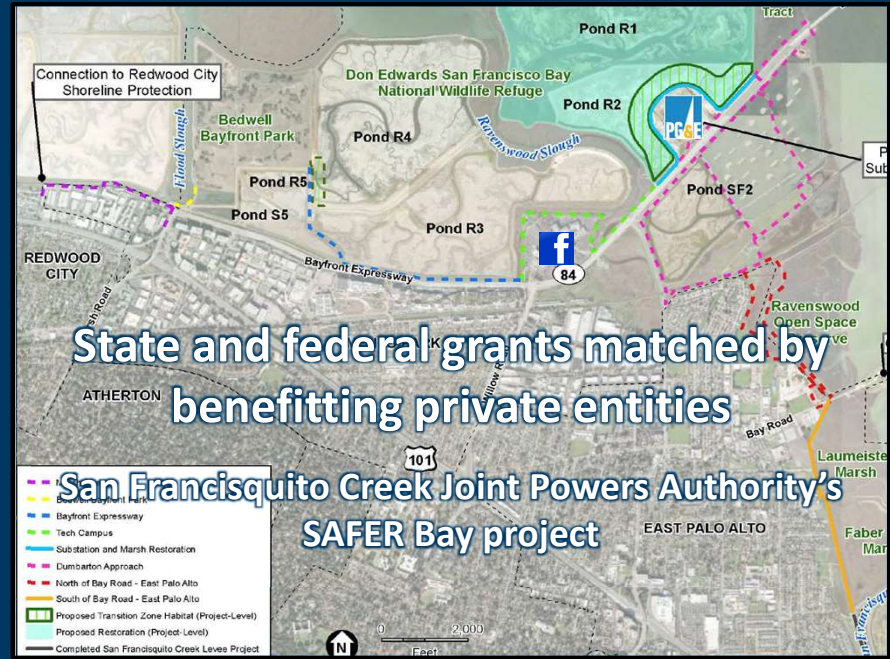
Planning Policy Guidance To Protect and Enhance Bay Shoreline Areas of San Mateo County June 2023





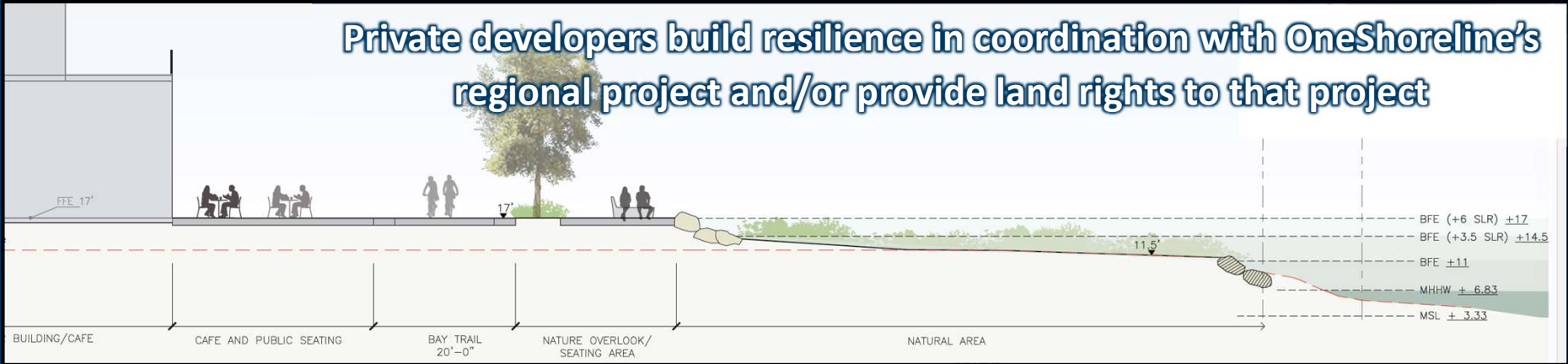
Contributions by benefitting local jurisdictions  
 OneShoreline's Bayfront Canal & Atherton Channel project

Strategies to finance and secure land rights for climate resilience projects in San Mateo County



State and federal grants matched by benefitting private entities  
 San Francisco Creek Joint Powers Authority's SAFER Bay project

Private developers build resilience in coordination with OneShoreline's regional project and/or provide land rights to that project







## Holistic approach to threats and geography

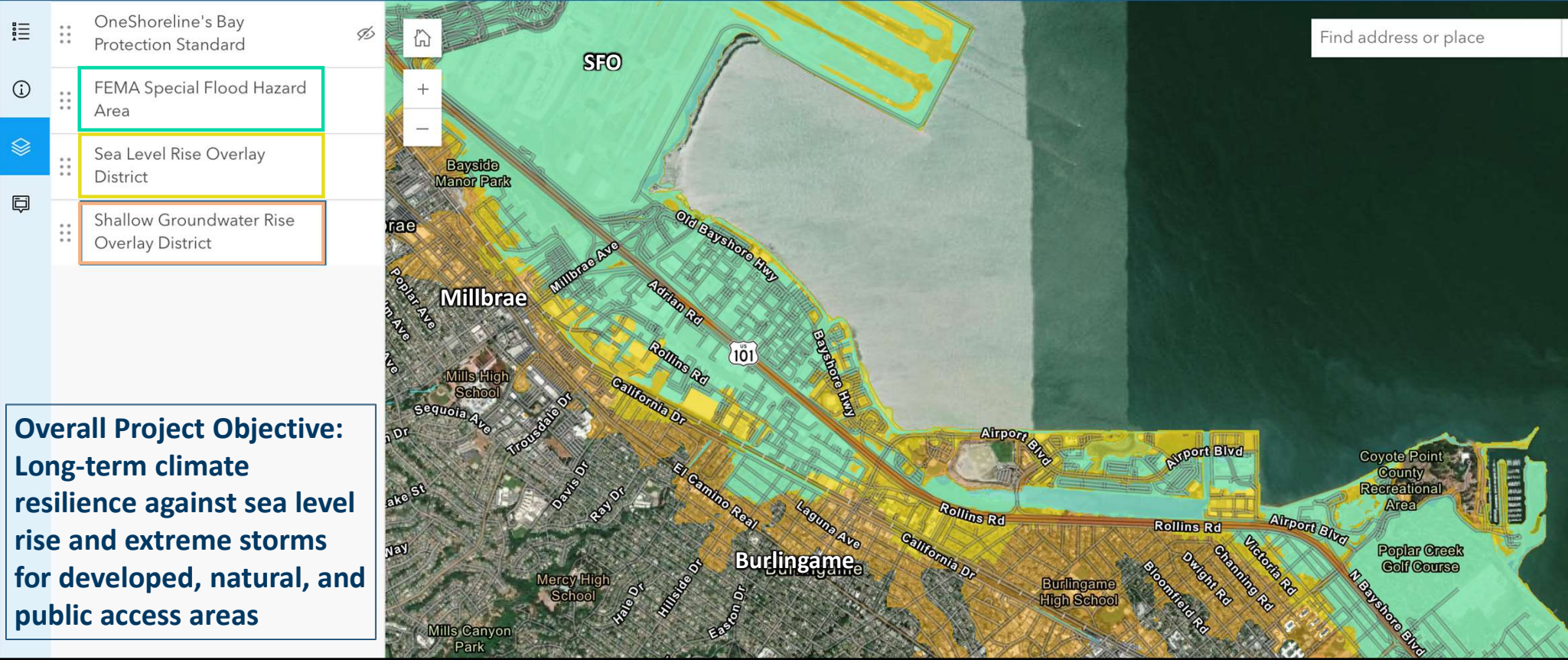
Atmospheric River + High Tide on 7<sup>th</sup> Ave.





# Millbrae and Burlingame Shoreline Area Protection and Enhancement Project

OneShoreline Bayside Map of Future Conditions



**Overall Project Objective:**  
Long-term climate resilience against sea level rise and extreme storms for developed, natural, and public access areas



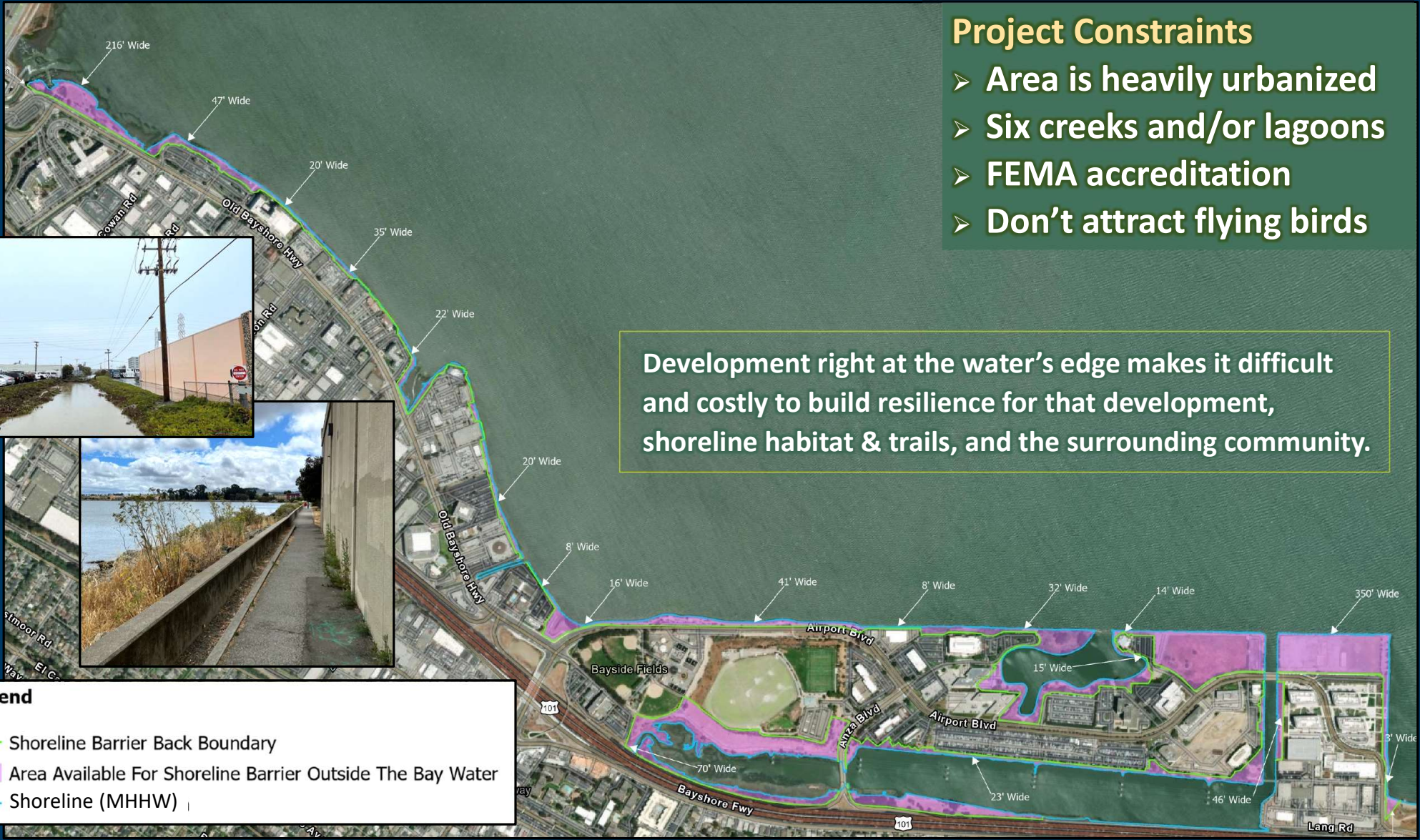
## Project Constraints

- Area is heavily urbanized
- Six creeks and/or lagoons
- FEMA accreditation
- Don't attract flying birds

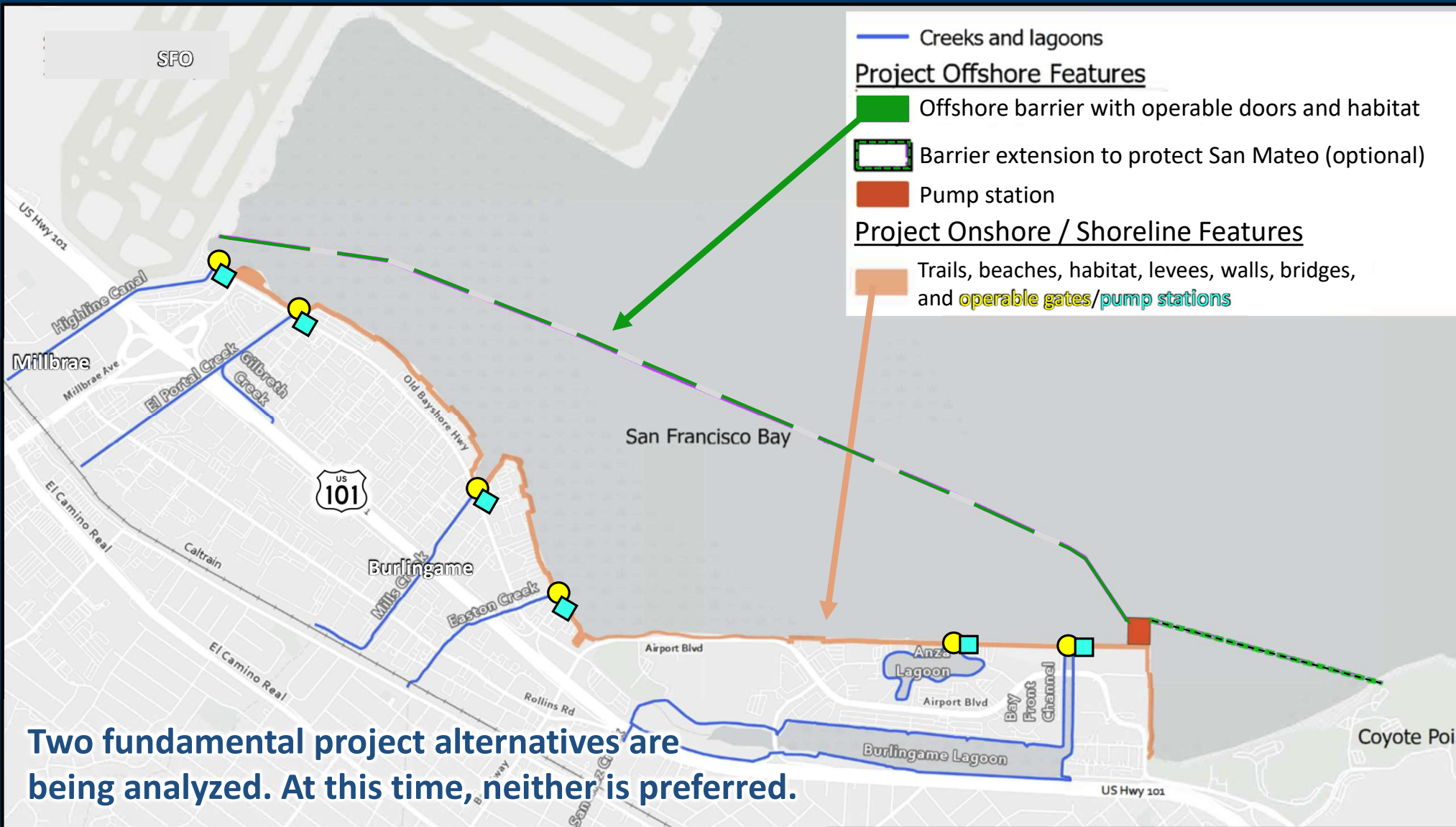
Development right at the water's edge makes it difficult and costly to build resilience for that development, shoreline habitat & trails, and the surrounding community.

### Legend

- Shoreline Barrier Back Boundary
- Area Available For Shoreline Barrier Outside The Bay Water
- Shoreline (MHHW)



SFO



Two fundamental project alternatives are being analyzed. At this time, neither is preferred.





*Thank you*



**OneShoreline**  
Building Solutions for a Changing Climate