



2024



SPRING SUMMIT

*Building Resilience: Financial Strategies
for a Changing Bay Area*

May 14th, 2024

8:30 a.m. - 3:00 p.m.

David Brower Center, Berkeley



SEA LEVEL RISE ADAPTATION FUNDING AND INVESTMENT FRAMEWORK



Assets at risk of SLR flooding:²

75,000

total households, including **12,000** in the most socially vulnerable communities.¹

200,000

total jobs, and **15,000** total businesses.

20,000

vulnerable acres at risk, including wetlands, lagoons, and tidal marshes.

Sea level rise adaptation in the San Francisco Bay Area will require a vivid reimagining of our relationship with the Bay, the Pacific Coast, and the Delta. **Adapting successfully to this uncertain future will require significant amounts of funding that are not available now, nor anticipated to emerge in the near future.**

The Sea Level Rise Adaptation Funding and Investment Framework (2023) is a joint report by the San Francisco Bay Conservation and Development Commission (BCDC), Metropolitan Transportation Commission (MTC), and Association of Bay Area Governments (ABAG).

ADAPTATION NEEDS:

\$110 billion

Estimated cost of sea level rise adaptation through 2050³

- **\$52 billion:** Estimated cost for known or planned projects
- **\$54 billion:** Estimated placeholder cost for areas with adaptation needs
- **\$3 billion:** Estimated additional sediment management needs

COST OF INACTION:

\$230+ billion

Estimated value of a subset of assets at risk through 2050⁴

**The cost of inaction is far higher than the cost of adaptation.
We stand to lose much more if we do not act.**

1 Social vulnerability defined by the high and highest levels of BCDC's Community Vulnerability Data.

2 Assuming 4.9 feet of inundation by 2050

3 In year of expenditure dollars

4 In 2022 dollars

TABLE OF CONTENTS



04	2024 Spring Summit Sponsors
05	Event Agenda
06	About BPC
07	Speaker Biographies
13	2024 Spring Summit Committee
14	Resources
15	Get Involved
19	Board of Directors
20	2024 BPC Members

2024 SUMMIT SPONSORS

Presenting Sponsors



Contributing Sponsors



Supporting Sponsors



Donor Sponsors

***Port of Redwood City | Operating Engineers - Local 3
| Haley & Aldrich***

AGENDA

- 8:30 AM **Networking Breakfast**
- 9:30 AM **Event Opening Remarks**
Anju Wicke, *Senior Principal* | Geosyntec & *Board of Directors Vice President* | Bay Planning Coalition (BPC)
- 9:40 AM **Keynote Address**
Libby Schaaf, *California State Treasurer Candidate & Former Mayor* | City of Oakland
- 10:05 AM **Navigating the Current Funding Landscape**
Amy Dzialowski, *Senior Principal* | Geosyntec
Tegan Hoffmann, *Executive Director* | Coastal Quest
Moderator: **Nikki Roach**, *Policy and Communications Coordinator* | San Francisco Bay Joint Venture (SFBJV)
- 10:55 AM **Panel Discussion: Showcasing Regional Projects**
Brad Benson, *Waterfront Resilience Program Director* | Port of San Francisco
Len Materman, *Chief Executive Officer* | OneShoreline
Moderator: **Connie Lee**, *Senior Land Management Engineer* | Cargill Salt
- 12:00 PM **Lunch**
- 1:10 PM **Panel Discussion: Advancing Adaptation - Regional Finance and Coordination Strategies**
Warner Chabot, *Executive Director* | San Francisco Estuary Institute (SFEI)
Brian Cooney, *Senior Vice President* | Marsh Risk & Insurance
Matt Maloney, *Director of Regional Planning* | Metropolitan Transportation Commission (MTC)
Stephanie Moulton-Peters, *District 3 Supervisor* | Marin County
Sujata Srivastava, *Chief Policy Officer* | SPUR
Moderator: **Lisa Gauthier**, *Senior Vice President* | SVLG; *Councilmember* | City of East Palo Alto; *Candidate for District 4 Supervisor* | San Mateo County
- 2:25 PM **Concluding Perspective**
Zack Wasserman, *Chair* | San Francisco Bay Conservation and Development Commission (BCDC)
- 2:35 PM **Event Closing Remarks**
Cameron Carr, *Director of Policy & Chief Operating Officer* | Bay Planning Coalition (BPC)



ABOUT BPC

Bay Planning Coalition is a leader in building consensus on the critical issues facing the San Francisco Bay and surrounding region. We provide expert facilitation to advance fair and reasonable regulation, and we advocate on behalf of our members on a wide range of policy issues related to climate resilience, transportation, air quality, regulatory compliance, and land use planning.

Founded in 1983, the Bay Planning Coalition is a non-profit, membership-based organization representing a broad spectrum of public and private entities collectively advocating for strong economic growth and environmental sustainability of the region. We work to navigate through the overlapping regulatory jurisdictions that touch the Bay to support sustainable growth, and we influence the development of sound regional policy and planning to build a more vibrant Bay Area.



**Briscoe
Ivester
& Bazel**
LLP

Proudly sponsoring the
Bay Planning Coalition
since its founding in 1983

Experienced lawyers dedicated to excellence
in the practice of land use, environmental,
and natural resources law

415.402.2700
briscoelaw.net

SPEAKERS & PANELISTS



Brad Benson

Waterfront Resilience Program Director | Port of San Francisco

Brad Benson joined the Port of San Francisco in 2005. As the Waterfront Resilience Program Director, he oversees the Waterfront Resilience Program efforts, including the up to \$5 billion Embarcadero Seawall Program and the United States Army Corps of Engineers/Port of San Francisco Flood Study.

Before he was named Waterfront Resilience Program Director in early 2019, he was Director of Special Projects and oversaw the Port's local, state, and federal legislative program. During this time, Benson developed the state legislation that guides two of the Port's largest development projects at Pier 70 and Mission Rock. Additionally, he developed the state and local legislation that allows the Port to form infrastructure financing districts on Port property, to leverage private dollars for the benefit of the public. He collaborated in the preparation of the Port's Ten Year Capital Plan to ensure an economically stable Port. Moreover, he managed the Port's role in the Golden State Warriors Chase Center development project in the central waterfront. In addition to Director of Special Projects, he also served as the Port's Pier 70 Waterfront Site Project Director to oversee a new proposed transit-oriented, Type 1 Eco-District neighborhood in the southern waterfront.

From 2010-13, Brad served as the Port's project manager for the 34th America's Cup, that attracted millions of visitors and generated \$1.4 billion in economic impacts to San Francisco.

Prior to joining the Port, Brad served as the Honorable Tom Ammiano's legislative aide from 1997-2005. He worked with constituents and City staff to write legislation, staff San Francisco Board of Supervisors meetings and committees, and manage day-to-day Board affairs during Supervisor Ammiano's terms as Board President.

Before joining the City and County of San Francisco government, Brad worked as a recycling and composting consultant and was active in local environmental campaigns.



Cameron Carr

Director of Policy & Chief Operating Officer | Bay Planning Coalition (BPC)

Cameron Carr is the Director of Policy and Chief Operating Officer at the Bay Planning Coalition. In this role, he manages the organization's external Committees and supports the Coalition's over 150 member organizations, which include a broad spectrum of public and private Bay-Delta entities, including ports,

maritime and shoreline industry, labor unions, local government, residential and commercial builders, recreational users and engineering, planning, environmental science, construction, and legal professionals. To advance the organization's strategic goals, Cameron represents the Coalition among regional agencies and stakeholders. Cameron also oversees the organization's finances and day-to-day operations, working closely with BPC's Board of Directors to support the organization's development and advance policy objectives.

His passion for environmental and regulatory policy stems from his experience working with the general counsel of an irrigation district in California's Central Valley. Learning of the complexities and opportunities of water politics in the Bay-Delta Watershed ignited his interest in balanced policies that protect the natural environment while fostering responsible economic growth.

Cameron holds a Bachelor's Degree from the University of San Diego, and currently resides in San Francisco.



Warner Chabot

Executive Director | San Francisco Estuary Institute (SFEI)

Warner Chabot brings over 40 years of executive experience in the private, public and non-profit sector, focused on science-based, environmental planning and policy issues. Warner has specialized in California coastal, ocean, water, land use and energy issues at the local state and federal level. Between

managing his own environmental consulting firm Warner also served as the CEO of the California League of Conservation Voters. Prior to that, Warner was a Vice President of Ocean Conservancy, a national ocean policy organization.



Brian Cooney

Senior Vice President | Marsh Risk & Insurance

Brian Cooney is a Senior Vice President / Client Executive / Account Executive in the San Francisco office. In this role, he is responsible for delivering the Marsh suite of products and services to his clients. He provides day-to-day leadership, coaching, and client servicing to ensure that all his clients receive the

best Marsh has to offer on a worldwide basis. He is also responsible for the client renewal strategies and ultimately for successful claim resolutions.

Brian joined Marsh in 1989. Previously he was an underwriter for the Royal Insurance Company and AIG - Commerce and Industry focusing on large complex property and casualty accounts. Since joining Marsh, Brian has had an industry focus on real estate, manufacturing, utilities and the public entity sector.

While at Marsh, his primary focus has been on large complex property accounts with an emphasis on California earthquake and flood exposures. Brian has been a team leader within the property risk management department. He was also a senior property placement specialist structuring and negotiating the largest and most complex property programs for the western region. Brian is extremely familiar with the Domestic and London markets. He has personally met with the various underwriters located in London, Zurich and Munich on more than 30 occasions.



Amy Dzialowski

Senior Principal | Geosyntec Consultants

Ms. Dzialowski is a Senior Principal and the Planning & Funding Practice Lead for Geosyntec Consultants, Inc. She has more than 22 years of public-private partnership development, community planning, and stakeholder engagement experience. She is a nationally recognized expert in environmental and

government funding programs and has worked with dozens of grant funded programs across the United States; focused on community revitalization, infrastructure, capital projects, climate resilience, and environmental solutions. She has successfully secured more than \$262 million in grant awards for public sector and industry clients and brings an understanding of best practices, program approach, and partnership development.

Ms. Dzialowski is Vice Mayor of her community and has served on the city council since May 2018. In this role, she has developed policy around funding, infrastructure, resilience, land use, economic development, parks and recreation, public health, and utilities. Ms. Dzialowski was recently appointed by the George Kaiser Family Foundation as an inaugural fellow with the 1050 Forward Fellowship Program. The 1050 Forward Program is a comprehensive initiative designed to strengthen civic engagement and advance collaborative strategies in micropolitan communities for positive statewide outcomes.



Lisa Gauthier

Senior Vice President | Silicon Valley Leadership Group (SVLG); *Councilmember* | City of East Palo Alto; *Candidate for District 4 Supervisor* | San Mateo County

Lisa was elected to the East Palo Alto City Council in 2012 and is currently serving as a council member. She previously held the positions of Vice Mayor in 2014, 2018, and 2022 and Mayor in 2015 and 2019.

Lisa is currently running for District 4 in The San Mateo County Board of Supervisors. Lisa is the SVP of inclusion & Belonging for the Silicon Valley Leadership Group, where she leads the Workforce/Education, Racial Justice & Equity, & Healthcare policy areas. Lisa recently worked as the Government Affairs Manager at Study.com, an online education company in Mountain View, where she supported the company's community impact programs – including Working Scholars, a community-funded free college initiative.



Tegan Hoffmann

Executive Director and Board Member | Coastal Quest

Tegan Hoffmann has over 25 years of experience in coastal and ocean conservation and resource management and is one of Coastal Quest's founding members and the Executive Director of Coastal Quest. After 15 amazing years founding and leading Blue Earth Consultants, both independently and

under the ERG umbrella, she left to focus on fulfilling the Coastal Quest vision and mission. Tegan has deep experience working on domestic and international projects, focusing on building climate resilience, and achieving sustainable resource management and conservation goals.

Tegan has extensive know-how designing, developing, and launching projects, programs, and institutions for private foundations, public agencies, and nonprofit organizations. She has authored several publications and received numerous awards and research grants for her work on conservation, resource management, and building local conservation capacity in the Wider Caribbean, Southeast Asia, and the Pacific, from such organizations as National Oceanic and Atmospheric Administration, National Fish and Wildlife Foundation, the U.S. Environmental Protection Agency's STAR Fellowship, the University of California's Pacific Rim Research Program, and the U.S. Indonesia Society. She has developed and conducted several trainings in the Wider Caribbean and Indo-Pacific regions for hundreds of community stakeholders on conservation and resource management issues, and has taught several courses at the University of California. Tegan graduated from the University of California, Berkeley, and holds Ph.D. and master's degrees in geography and a B.S. degree in conservation resource studies.



Connie Lee

Senior Land Management Engineer | Cargill Salt

Connie Lee is a Senior Land Management Engineer with Cargill, a global food and agriculture company focused on nourishing the world in a safe, responsible, and sustainable way. In the San Francisco Bay Area, Cargill operates on over 12,000 acres of salt ponds to produce sea salt using the natural power of

the sun and wind. Connie is responsible for managing several projects supporting the maintenance and operations of solar sea salt making and handles a variety of complex regulatory and real estate matters. She serves on the Board of Directors at the Bay Planning Coalition and co-chairs the Sustainable Waterfronts Committee. Prior to joining Cargill, she worked in the Land Management department at PG&E and graduated from UC Davis with a B.S. in Civil Engineering. Connie is a Bay Area native and currently lives in Fremont with her cat Leela. In her spare time she enjoys adding to her ever-growing book collection and refining her Salt Marsh Harvest Mouse cookie recipe.



Matt Maloney

Director of Regional Planning | Metropolitan Transportation Commission (MTC)

Matt is the Director of Regional Planning for the Metropolitan Transportation Commission and Association of Bay Area Governments, spanning the 9-county Bay Area. Under Matt's leadership, the Regional Planning Program delivers a number of high-profile long range planning efforts, including Plan Bay Area 2050 and the Regional Housing Needs Allocation (RHNA). Prior to his role as Director, Matt served as Deputy Planning Director, and managed the strategic implementation of the MTC and ABAG staff consolidation in 2017.

Prior to MTC, Matt served as Deputy Chief of Staff for the Chicago Metropolitan Agency for Planning (CMAP), the metropolitan planning organization for the Chicago region. Matt got his start working in bicycle and pedestrian advocacy in Chicago, and received a Master's in Public Policy from the University of Chicago and a Bachelor's in Urban Studies from Brown University.



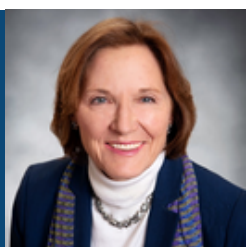
Len Materman

Chief Executive Officer | OneShoreline

In the Spring of 2020, Len Materman was appointed CEO of the San Mateo County Flood & Sea Level Rise Resiliency District (OneShoreline), the first countywide independent government agency in California focused on these climate change impacts. From September 2019-September 2020, Len

served as the first Public Policy Practitioner in Residence at Stanford University's Center for the American West and, with colleagues at Stanford and UC Berkeley, he was a contributing author of two recent books on financing and implementing large-scale climate resilience.

Previously, Len served as the Executive Director of the San Francisquito Creek Joint Powers Authority (SFCJPA), where he led the largest completed multi-jurisdictional sea level rise protection effort in the state, for which the SFCJPA has been highlighted as a model of regional collaboration in the Wall Street Journal, Los Angeles Times, and other major media. Prior to leading the SFCJPA, Len served as a consultant to nonprofits, foundations, and the U.S. State Department, and as executive producer of a film on water broadcast nationally on PBS. During the Clinton Administration, Len served as a policy advisor to the Director of FEMA and as FEMA's representative on two White House Task Forces. Prior to his work in Washington, Len was the Director of Government Affairs at UC Berkeley, where he received two Chancellor's Distinguished Service Awards. Len has degrees in Political Science and Biology from UC Davis.



Stephanie Moulton-Peters

County Supervisor, District 3 | County of Marin

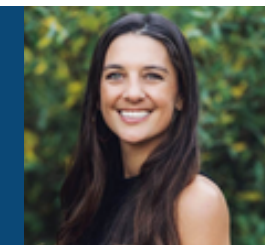
Stephanie Moulton-Peters is the Marin County Supervisor for District 3, which includes Sausalito, Floating Homes, Marin City, Tam Valley, Almonte, Mill Valley, Alto-Sutton Manor, Strawberry, Tiburon, and Belvedere. Stephanie is dedicated to transparent, responsive, effective, and inclusive government that

serves the needs of all constituents.

Stephanie serves on several local and regional boards including the Metropolitan Transportation Commission (MTC), Bay Conservation and Development Commission (BCDC), Golden Gate Bridge Highway and Transportation District, Transportation Authority of Marin (TAM) of which she is past Chair and is currently Chair of the Marin County-City Sea Level Rise Collaborative, BayWAVE. She also serves on the Marin Housing Authority, Marin Flood and Water Conservation District, among other commissions, boards and subcommittees.

Prior to being elected Supervisor, Stephanie served three terms on the Mill Valley City Council and as Mayor in 2010, 2014 and 2018. She worked at PG&E Company managing environmental regulatory compliance for air, water, and toxic substances and climate change programs.

Moulton-Peters is a graduate of Stanford University's Program in Human Biology with concentration in environmental policy. In Summer 2022, she completed the Harvard Kennedy School Program for Senior Executives in Local and State Government. Stephanie and her husband live in Mill Valley and have two adult sons.



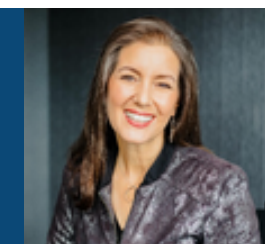
Nikki Roach, Ph.D.

Policy and Communications Coordinator | San Francisco Bay Joint Venture (SFBJV)

Born and raised in Oakland, CA (Ramaytush Ohlone Lands) Nikki (she/her) has spent the last decade working in conservation across academia, NGOs, and international institutions. Nikki's work has been at the intersection of biodiversity conservation and climate change. During her M.S. at Clemson University,

Nikki led the first-ever state-wide surveys for Eastern Black Rails in South Carolina. While living in Colombia for her Ph.D., she worked with coffee farmers to enhance sustainability practices and with local practitioners to understand the vulnerability of amphibians to land use and climate change.

She is a member of the Generative Council for [Center for Nature and Leadership](#), three [IUCN Species Survival Commission](#) Specialist Groups (climate change, amphibian, small mammal), and associate scientist for NGO [Re:wild](#). Nikki was a Fulbright Scholar (Colombia 2017-2018) and the Director of Communications for the Latin America and Caribbean Section of the Society for Conservation Biology (2018-2020). She is fiercely dedicated to improving equity across the conservation sector.



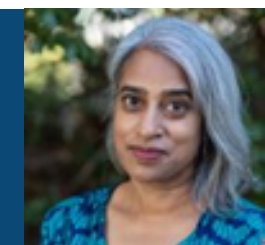
Libby Schaaf

State Treasurer Candidate | State of California; *Former Mayor (2015 - 2023)* | City of Oakland

Libby Schaaf served as Oakland's 50th Mayor from 2015-2023. She was the first woman elected Chair of California Big City Mayors. She Co-chaired the bipartisan Mayors & CEOs for Housing Investment and served in the US Delegations to the UN's Habitat III and COP27. Previously, she worked as an attorney,

legislative aide, City Councilmember and Director of Public Affairs to the Port of Oakland. Libby holds a J.D. from Loyola Law School.

Last year, Libby ran Emerge California, a program that recruits and trains Democratic women to run for political office and held a Senior Fellowship with Mayors for a Guaranteed Income. She is currently a lecturer at UC Berkeley's Goldman School of Public Policy and is HUD Secretary Fudge's appointee to the Metropolitan Transportation Commission & Bay Area Housing Finance Authority. She serves on the boards of All Home, California Competes, The NorCal Coalition of College Promise Programs, and The Climate Migration Council, Libby helped create the Bay Area Housing Finance Authority, the first of its kind in California, and was first to be appointed Chair of its Oversight Committee. She received the Bay Area Housing Hero Award in 2020 and she holds a Senior Fellowship with the Harvard Graduate School of Education for collective action.



Sujata Srivastava

Chief Policy Officer | SPUR

Sujata Srivastava is the Chief Policy Officer for SPUR, Before taking on this role, she was SPUR's Planning and Housing Policy Director. While at SPUR, Sujata has led the policy research and advocacy for downtown San Francisco's revitalization and strategies to improve housing affordability throughout the region.

Raised in Brazil and the United States by Indian immigrants, Sujata strives to bring a global perspective to her work as an urban planner. Before joining SPUR, she was a consultant at Strategic Economics and at AECOM | Economics Research Associates, where she advised public and private-sector clients on affordable housing, transit-oriented development, small business development, and real estate development in the U.S. and Latin America. Sujata holds a Master's in city planning from the University of California at Berkeley and a B.A. from Mount Holyoke College.



R. Zachary Wasserman

Chair | San Francisco Bay Conservation and Development Commission (BCDC)

Zack is the Chair of the San Francisco Bay Conservation and Development Commission, a position he has had for the past 12 years. He currently serves as Vice Chair of the Bay Area Regional Collaborative. He has recently retired after over 50 years as an attorney in Oakland where he worked with private

businesses and public agencies to negotiate and draft complex real estate and financial structures. Working frequently with state and local regulatory and permitting agencies, he represented clients before a variety of administrative bodies to enable clients to complete some of the region's most intriguing projects. He is now providing consultation on strategy and tactics for a number of businesses and nonprofit organizations.

He serves as an officer of the East Bay Economic Development Alliance, the Oakland Chamber of Commerce, the Meg Foundation for Pain, and a Board Member of the East Bay Community Foundation Real Estate Advisory Board, Oakland and the World Enterprises and several other non-profit corporations and foundations engaged in economic and business development.



Anju Wicke

Senior Principal Scientist | Geosyntec Consultants

Anju Wicke is a Senior Principal Scientist based in California with more than 25 years of experience in environmental consulting focused on program management, financial management, and contracting services for federal, state, and municipal clients in the United States and Canada.

Her projects have included upland and sediment multi-year, multi-disciplinary contaminated site investigations; monitoring and sampling programs; environmental risk assessment, including human health and ecological risk assessments; air quality studies; hazardous materials management; development of designs; and leasing and transfer documentation of contaminated properties. She has been the technical lead on numerous upland, sediment, and coastal projects involving site assessment, risk assessment, remedial assessment, and remedial actions.



2024

SPRING SUMMIT

 Bay Planning Coalition

2024 SPRING SUMMIT PLANNING COMMITTEE

This event would not have been possible without the support and dedication of our 2024 Spring Summit Planning Committee.

Russ Barnes, *Principal*, Wilshire Consulting

Ane Deister, *Consultant*, HDR Engineering, Inc., & *Board President*, Bay Planning Coalition

Virginia Demetrios, *Account Leader and Vice President*, Arcadis, & *Board Secretary*, Bay Planning Coalition

Anju Wicke, *Senior Principal Scientist*, Geosyntec Consultants, & *Board Vice President*, Bay Planning Coalition

Building resilient coastlines and vibrant communities.

HDR's suite of coastal services addresses engineering requirements for both built and restorative projects. We partner with clients to bolster the confidence of those who live in waterfront communities and achieve goals for coastal engineering, restoration, and resilience.

- ◆ Planning and Feasibility
- ◆ Shoreline Enhancement
- ◆ Flood Risk Management
- ◆ Environmental Studies
- ◆ Ecosystem Restoration
- ◆ Sustainability and Resiliency

hdrinc.com



BUILDING A STRONGER BAY.

Proud Sponsor of The Bay Planning Coalition's
2024 Spring Summit

Fennemore Wendel. Expect**MORE**.
www.fennemorelaw.com



FENNEMORE.
WENDEL

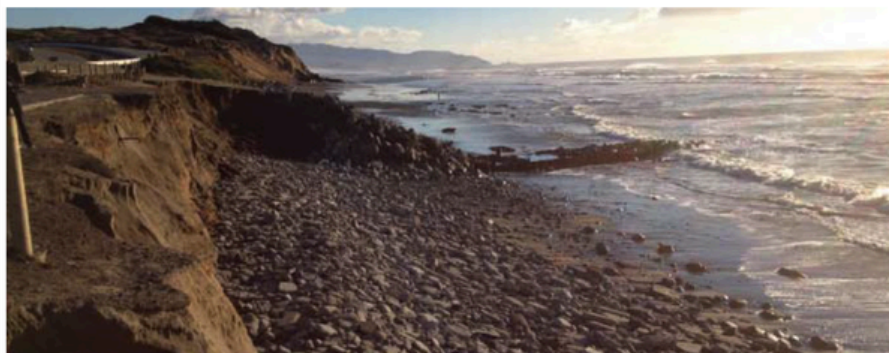
EVENT RESOURCES



Scan or click the QR code to access the online resource guide for resilience funding and coordination.



ESA is a 100% employee-owned environmental consulting firm providing in-depth environmental analysis of visionary projects around the Bay.



By becoming a member of the Bay Planning Coalition (BPC), you are joining a robust network of stakeholders in helping to shape the Bay's economic future. The many policy events we host throughout the year provide excellent opportunities to engage directly with policymakers and network with other leaders around the region.

Membership Benefits

Networking - BPC is a collection of the business and environmental leaders in the Bay Area. BPC events, like the Annual Decision Makers Conference, gather experts in a number of industries that is relevant to your ongoing work. Our members benefit from meeting and building relationships with their peers. BPC helps connect members with regulators to explore solutions to conflicts over the use of the Bay and contiguous shoreline.

Advocacy – BPC is an advocate for the issues that impact your organization. BPC works on a local, state, and federal level to represent the economic and environmental needs of the region. We attend and frequently speak at the hearings and committee meetings to advocate for rational and sensible solutions to permitting, environmental, and economic issues.

Education – BPC provides a number of member services including conferences, briefings, and workshops. We help our members stay up-to-date on rules and regulations, breaking news on issues and bay projects, permit assistance, advocacy, and strategic responses to proposed regulations and legislation.



AQPI
Advanced Quantitative
Precipitation Information

**State-of-the-art
radar technology
is coming to the
Bay Area.**

Find us online at <https://psl.noaa.gov/aqpi>

BPC POLICY COMMITTEES

*Meetings are held at a minimum of once per quarter.
Due to the active nature of our members, most committees meet more frequently.*

Air Quality Committee

- Influence the development of pragmatic air quality regulations that build resilience and support for continued economic growth in the Bay Area.
- Advocate for funding to support emission reduction investments at Bay Area ports, refineries, and other opportunities.
- Support for practical, consistent, and predictable regulation of clean energy projects, especially those that provide prompt incremental improvements.

Dredging & Beneficial Reuse Committee

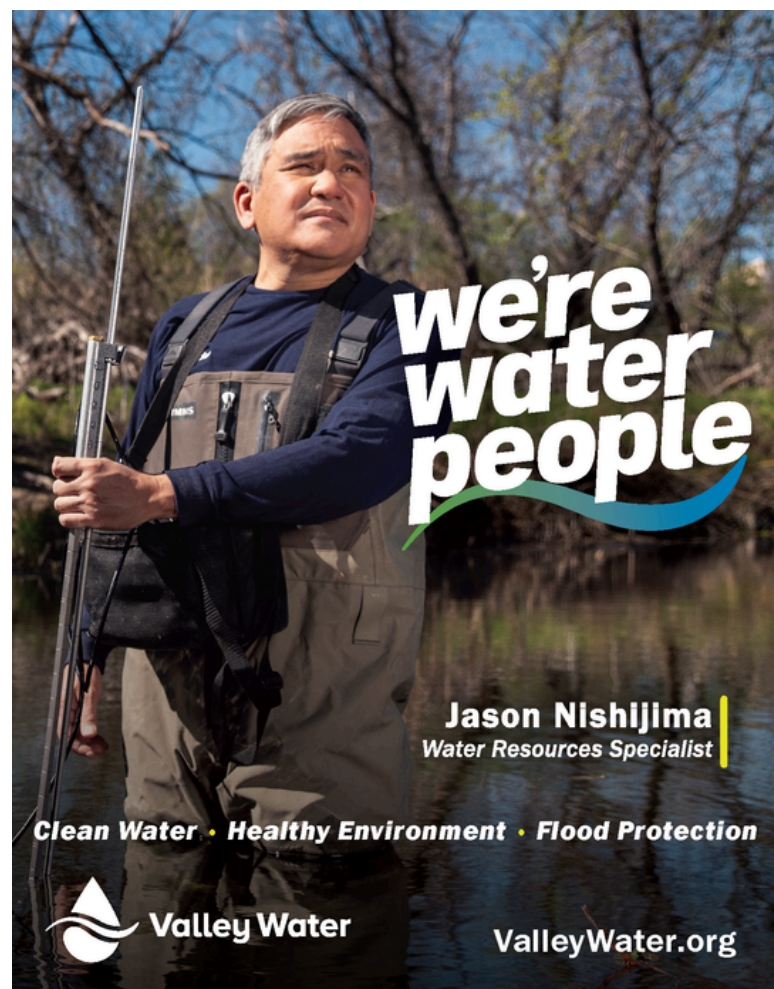
- Support permitting reforms and the regular dredging of critical waterways.
- Advocate for State and Federal funding by educating legislators on the importance of the region's dredging for the movement of goods and people to the state economy.
- Champion the beneficial use of dredged sediment for shoreline resiliency projects.
- Direct funds for dredge-related science through the SFEI Regional Monitoring Program.

Energy & Water Committee

- Educate BPC members and the public on the critical economic impacts of drought, water security, and energy supply issues, to ensure the sustainable use and management of nexus resources.
- Support funding for the resilience adaptation of water and energy conveyance infrastructure, wastewater treatment, conservation practices, and increased storage.
- Advocate for new policies and regulatory solutions to ensure a resilient water and energy supply.

Government Affairs Committee

- Support legislation that advances economic growth and environmental protects in the San Francisco Bay Area region.
- Utilize BPC's advocacy potential to promote positive outcomes for policies of concern.
- Develop a strong committee membership of varying interests to provide well-informed information.



Sustainable Waterfronts Committee

- Advocate for new funding and regional collaboration to plan, fund, and implement climate adaptation projects in the Bay Area.
- Improve the transparency and efficiency of permitting shoreline projects through coordinated regulations.
- Identify projects representative of strong adaptation to influence the development of coordinated resiliency processes.

Resilient Transportation Committee

- Promote the expansion of water transit services and terminals.
- Support resilient transportation infrastructure to expand the movement of people and goods.
- Advocate for projects that improve the region's existing transportation routes and expand access to additional communities around the San Francisco Bay.

How to Join

Contact BPC Staff or visit our website for more information on our organization.

Phone: (510) 768-8310

Email: bpctestaff@bayplanningcoalition.org

Scan or click the QR Code to submit a membership inquiry.





Representing more than 150,000 who work in the oil and gas industry, the Western States Petroleum Association proudly supports the Bay Planning Coalition as we work together to create a sustainable energy future that serves EVERYONE.

For the latest information visit wspa.org

@ X f @OfficialWSPA | wspa.org

**NOW DEPARTING
FROM THE ORDINARY**



Ride the waves. Feel the breeze. Watch the sunlight glimmer on the skyscrapers. Sip some wine. Say hello to a sea lion. The water is the way to get where you're going. Even if it's nowhere at all.

 **San Francisco Bay Ferry**

Carrying on a tradition of using sunlight and wind to produce salt along the shores of the San Francisco Bay, a tradition that stretches back to methods used by the Ohlone people, the Bay Area's first inhabitants.

Together for Community

Cargill Salt
7220 Central Avenue
Newark, CA 94560
(510) 797-1820
www.cargillsalt.com/sfbay

 **Cargill**[®]



2023 BOARD OF DIRECTORS

Board Officers

President: **Ane Deister**, HDR Engineering

Vice President: **Anju Wicke**, Geosyntec Consultants

Treasurer: **Jaclyn Gnusti**, Moffatt & Nichol

Secretary: **Virginia Demetrios**, Arcadis

Board of Directors

William Adams, International Longshore & Warehouse Union (ILWU)

Amnon Bar-Ilan, Ramboll

Michele Barlow, Environmental Resources Management Ltd. (ERM)

Russell Barnes, Wilshire Consulting

Linda Blue, Pacific Inter-Club Yacht Association

Scott Bodensteiner, Haley Aldrich

John Bourgeois, Santa Clara Valley Water District

Bill Butler, Lind Marine Incorporated

Brian Cooney, Marsh Risk & Insurance Services

Eli Davidian, Environmental Science Associates (ESA)

Bill Dutra, The Dutra Group

Martin Espinoza Jr., Pile Drivers Local 34

Lauren Gularte, Water Emergency Transportation Authority (WETA)

Arielle Harris, Cox, Castle & Nicholson LLP

Brian Hubinger, Chevron

David Ivester, Briscoe, Ivester & Bazel LLP

Cole Jacobs, Martin Marietta

Laura Kennedy, Woodard & Curran

Connie Lee, Cargill

Jim Levine, Montezuma Wetlands LLC

Pat Mapelli, Graniterock

Christian Marsh, Downey Brand LLP

Amara Morrison, Fennemore Wendel

David Beaupre, Port of San Francisco

Christian Schaeffer, Levin-Richmond Terminal Corporation

John Schneider, Marathon Petroleum Corporation

Brad Sherwood, Sonoma County Water Agency

Danielle Starring, Pacific Gas & Electric (PG&E)

Jan Novak, Port of Oakland

Dilip Trivedi, Moffatt & Nichol

Scott Warner, BBJ Group

Sumudu Welaratna, Kleinfelder, Inc.

Martha Whetstone, San Francisco International Airport (SFO)

Jeffrey Wingfield, Port of Stockton

Kristine Zortman, Port of Redwood City

2024 BAY PLANNING COALITION MEMBERS

AECOM
Aeolian Yacht Club
Allen Matkins
AMPORTS/Port of Benicia
Anchor QEA
Arcadis U.S.
Associate Capital
Bay Area Council
BBJ Group
Bel Marin Keys CSD
BKF Engineers
Bonnie Lowrie-Preston
Building Industry Association
Briscoe Ivester & Bazel, LLP
California Capital & Investment Group
California Strategies, LLC
Cargill
Catalyst Environmental Group
CDIM Engineering
Central Contra Costa Sanitary District
Chevron
City of Alameda
City of Berkeley
City of Foster City
City of Martinez
City of Vallejo
Clipper Yacht Company, LLC
Contra Costa County Water Agency
Council of Industries
Cox Castle & Nicholson, LLP
CS Marine
Curtin Maritime
DirtMarket LLC
DivcoWest
Downey Brand LLP
Eagle Rock Aggregates
East Bay Dischargers Authority
East Bay Economic Development Alliance
East Bay Leadership Council
East Bay Municipal Utility District
Ellen Joslin Johnck Consulting
ENGIE Services
ENS Resources, Inc.
EnviroMend Group
Environmental Resources Management
Environmental Science Associates
Fennemore Wendel
Foth Infrastructure & Environment LLC
Friends of the Canal
Gahagan & Bryant Associates, Inc.
Geosyntec Consultants, Inc.
Ghilotti Construction
Graniterock
Gray-Bowen-Scott
Greeley and Hanson
Haley & Aldrich
Hanson Bridgett LLP
HDR
Hogan Lovells LLP
ILWU International
Integral Consulting
Jacobs
Jim Arnold
Kearns & West
Keech Properties
Kennedy/Jenks Consultants
Kleinfelder
Krupka Consulting
Levin Richmond Terminal Corp.
Lind Marine, Inc.
Lipton Environmental Group LLC
Marathon Petroleum
Mare Island Dry Dock
Marin Water
Marina Recreation Association
Marine Exchange of the San Francisco Bay Region
Marine Science Institute
Marsh Risk and Insurance Services
Martin Marietta
MetroCruise/MetroPorts
Michael Rafferty
Miller Starr Regalia
Moffatt & Nichol
Montezuma Wetlands, LLC
Navy League of the U.S.
NHA Advisors
Northern California Carpenter's Union
Oakland Metropolitan Chamber of Commerce
OneShoreline
Operating Engineers - Local 3, AFL-CIO
Overaa Construction
Pacific Gas & Electric
Pacific EcoRisk
Pacific Inter-Club Yacht Assoc.
Pacific Maritime Group
Pacific Merchant Marine Council

Pacific Waterfront Partners
Paradise Cay Homeowners Assoc.
PBF Energy/Martinez Refinery
Perkins Coie LLP
Phillips66
Pile Drivers Local Union #34
Port of Oakland
Port of Redwood City
Port of San Francisco
Port of Stockton
Power Engineering Construction Co.
Princess Cruises
PROP SF
Ramboll Environmental
RES
Ric Notini
Sailors' Union of the Pacific
San Francisco Bay Ferry
San Francisco Bay Joint Venture
San Francisco Estuary Institute
San Francisco International Airport
San Francisco Maritime National Park Assoc.
San Francisco Public Utilities Commission
SAMCEDA
San Mateo County Harbor District

Santa Clara Valley Water District
Santa Cruz Port District
Sheppard, Mullin, Richter & Hampton LLP
Silverado Contractors
Solano Economic Development Corp.
Sonoma County Water Agency
Stantec
Stice & Block
Strawberry Recreation District
Terraphase Engineering
The Dutra Group
The Industrial Assoc., Inc. of Contra Costa
The Maritime Alliance
Urban Economics
Valero Energy Corporation
Vortex Marine Construction, Inc.
Water Emergency Transportation Authority
Western States Petroleum Association
Western Wood Preservers Institute
Will Price
Wilshire Consulting
Woodard & Curran
Woodstock Development
WRA, Inc.
WSP



Our use of green materials is growing.

Recycled steel and sustainable concrete create buildings as lasting as the Coastal Redwoods.



PG&E is committed to:

SERVING PEOPLE, THE PLANET AND CALIFORNIA'S PROSPERITY

35K+ volunteer
hours in 2023

580 community
organizations
supported

\$25.6M donated
in 2023

1,000+ grants:

91% underserved communities

87% low-income groups

77% communities of color

\$8.8M in total contributions
from PG&E coworkers, retirees
and matching gifts from
The PG&E Corporation Foundation
to 5,000 nonprofit organizations
and schools



