

The Dredger's Perspective



Jim McNally
Manson Construction



Scott Bodensteiner
Haley & Aldrich

MODERATOR



Beneficial Reuse Potential of Hydraulic Dredging in SFBay

Jim McNally

10/31/2023



Manson Construction Co.

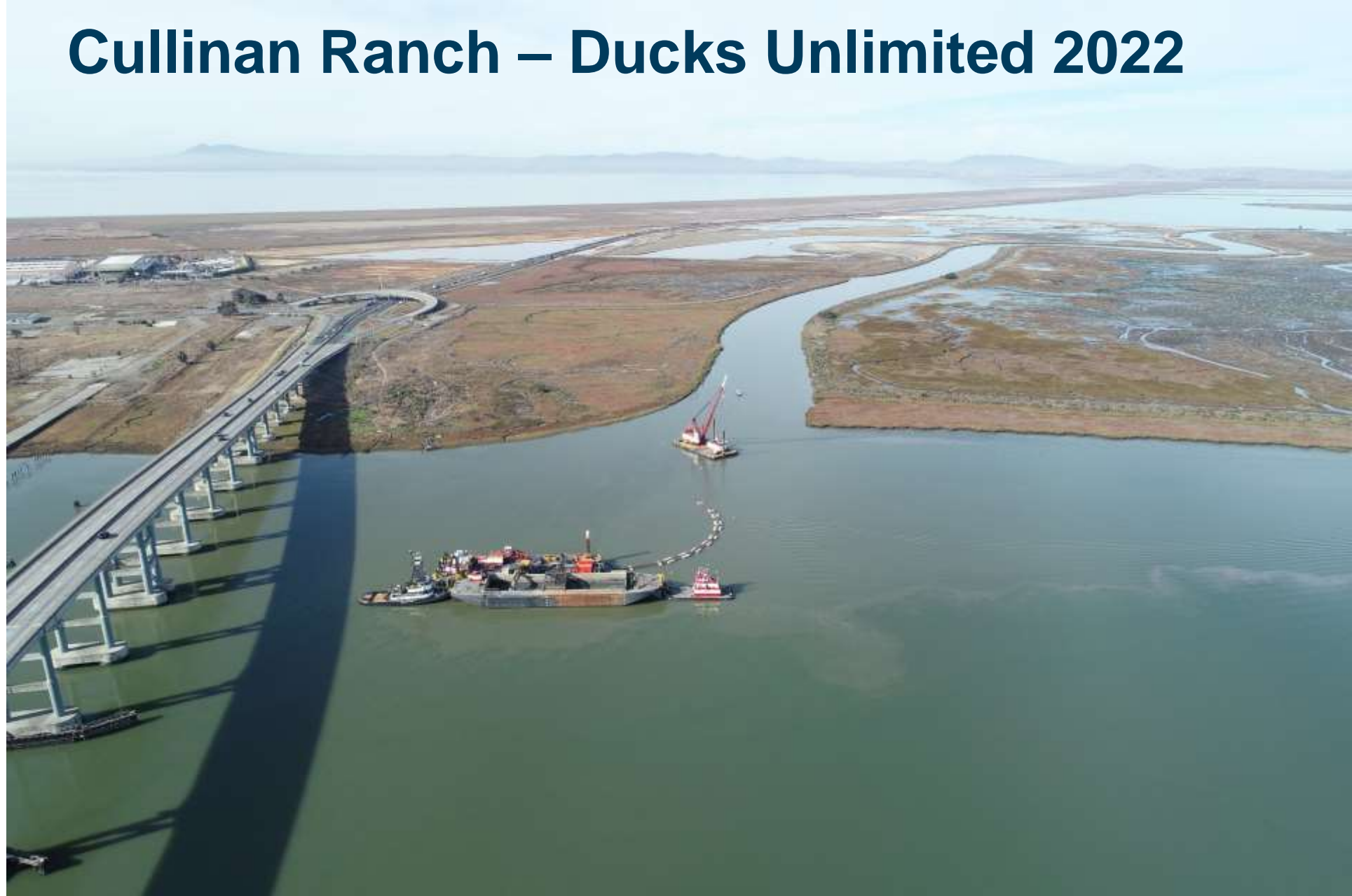
Manson Construction Co.

Manson Construction Co.

Manson Construction Co.



Cullinan Ranch – Ducks Unlimited 2022



Outline

1. The Federal Standard
2. Paths to more BU in SFBay O&M (and dead ends)
3. Beneficial Use Methods that could potentially stay within Federal Standard Budget
 - Aquatic Transfer Site
 - Hopper Dredging
4. The Need for Better Communication on the Costs of Various Options



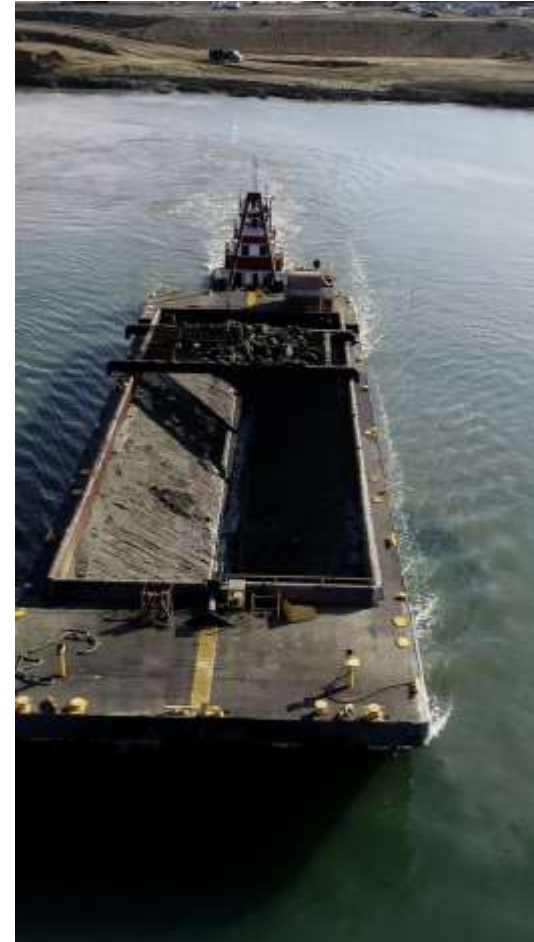
Cullinan Ranch – Ducks Unlimited 2022



The Federal Standard

Without separate funding stream, a Corps O&M dredging project is limited to the least costly dredged material disposal or placement alternative that is consistent with sound engineering practices and meets all federal environmental requirements.

This means that the project funding was justified on navigation benefits, and is funded out of a limited navigation “pot” based on this least cost “base plan”. Any additional cost for alternative disposal or placement schemes needs to be covered (at least in part) by other (non-fednav) funding sources.

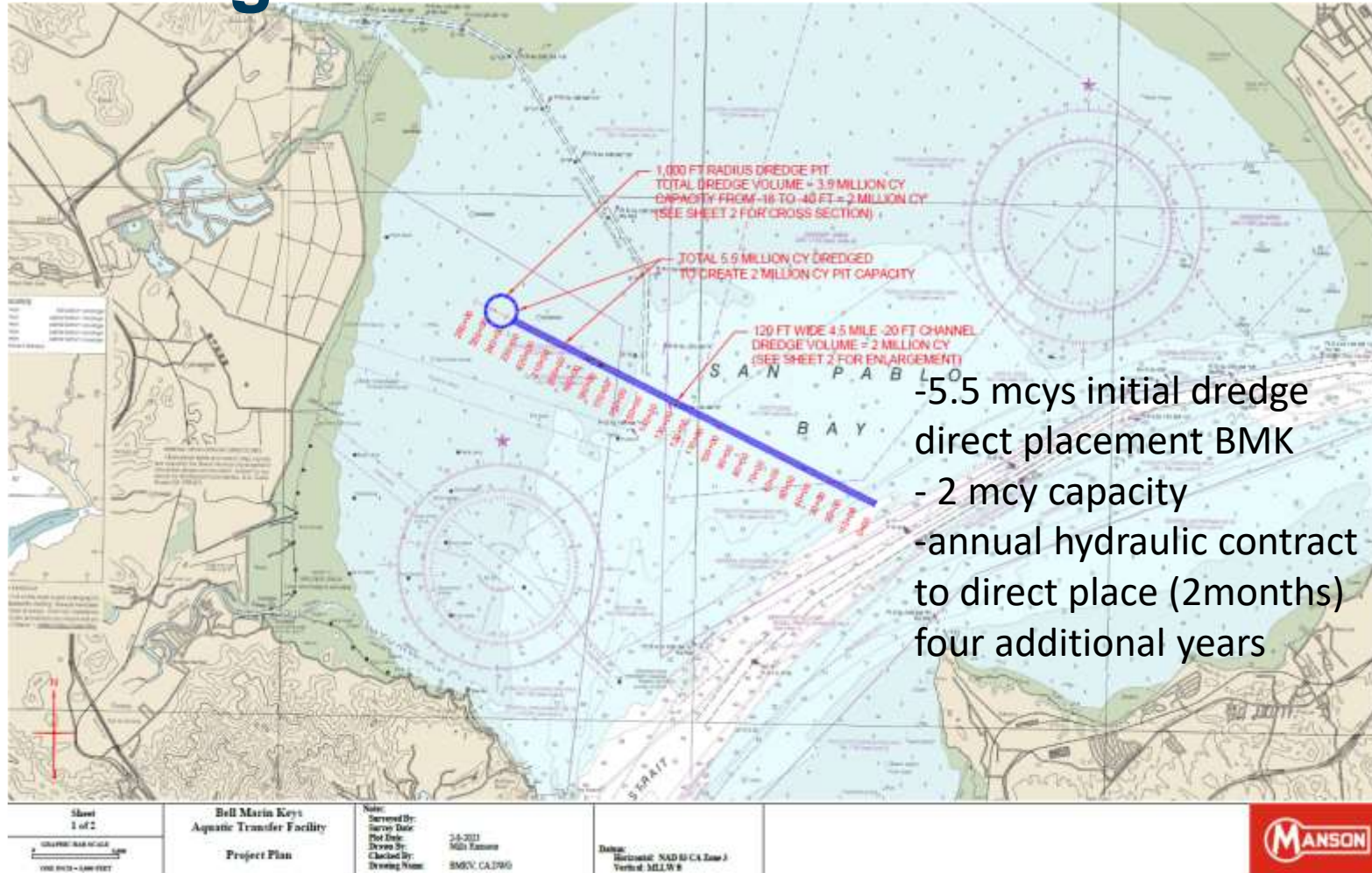


Paths to More BU in SF Fed O&M

1. Funding the Increment over the Federal Standard
 - separate federal funding (non-nav)
 - or state cost share of increment with USACE
2. Allowing Alternative Methods that are currently prohibited that could make BU cheaper than Fed Standard
 - Mechanical dredging to a holding basin that is hydraulically dredged annually- directly placing material upland
 - Direct cutter suction dredging from dredge area to upland site (<5miles)- see Stockton/Sacramento
 - Hopper Dredging with pump out to spill barge in mudflats or directly upland
3. Regulate the closure of disposal alternatives - DOJ vs. ? – only the lawyers win.



Aquatic Transfer – 13.5 mil cys to BMK, at less than DODs cost- a 5 year solution for the region.



- 5.5 mcys initial dredge
- direct placement BMK
- 2 mcy capacity
- annual hydraulic contract to direct place (2months)
- four additional years

Hopper Dredge pump out at various locations

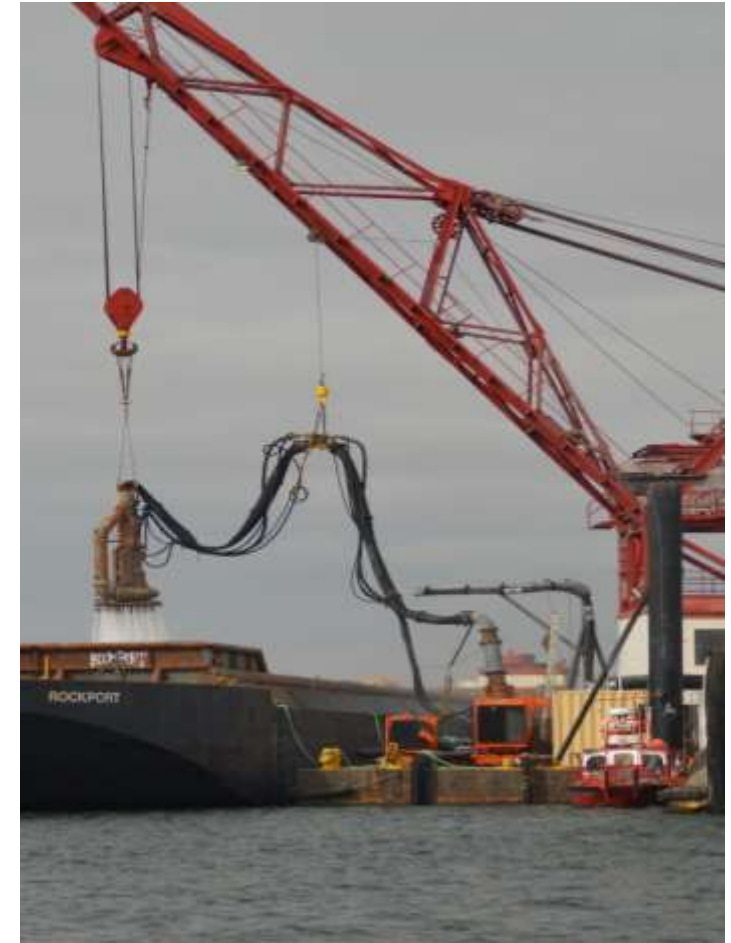
- Spill Barge to mudflats where target mudflats are within 1 mile of 15' of water
- Direct pump to marsh (expected to require booster and would likely not be cost competitive with Federal Standard)



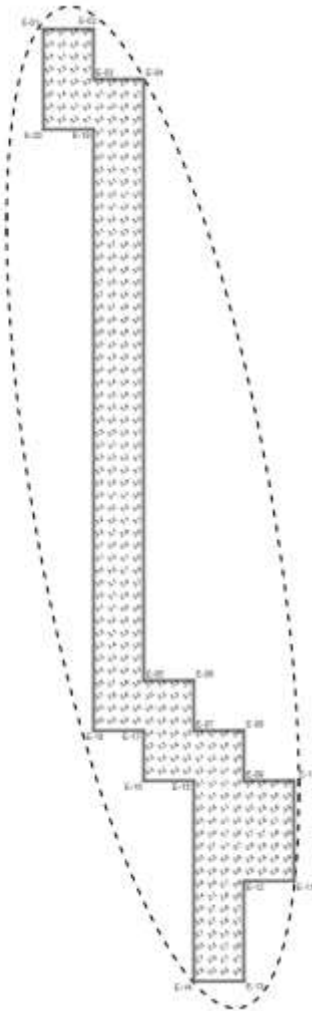
The Need for Better Communication on Cost of Alternatives

A critical aspect of identifying the best alternative is to understand the cost of various alternatives.

The dredge industry is normally very willing to engage in discussion of costs and in particular relative costs of options in the planning stage of work (i.e. before solicitations). USACE should work on ways to engage industry on cost of alternatives early in the process of planning



Strategic Placement Pilot Bid Results



< 5 mile tow, placement in 3ft mllw

Bid #1 GE- **\$10.25/cy**

Bids- \$27.40 & \$90.00

Bid #2 GE- \$32.00/cy

Bids- **\$34.00, \$42.85, \$46.15**

Questions?

