



Water Board Planning Projects for Bay Planning Coalition January 2023

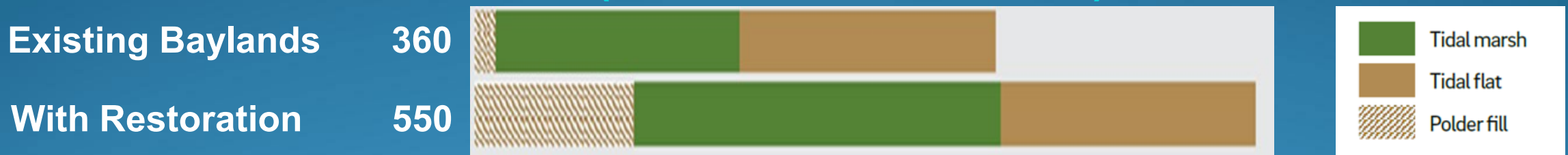
Xavier Fernandez
Division Manager
Planning/TMDL Division

Overview

- Sediment and Soil Beneficial Use
 - Future Need and Sources
 - Actions to Increase Beneficial Use
- Tribal Beneficial Uses
- Shoreline Cleanup Reprioritization

Future Sediment Need (2010-2100)

Future Sediment Demand (Million Metric Tonnes)



Future Sediment Supply from Tributaries (Million Metric Tonnes)



Source: Sediment for Survival (SFEI 2021, <https://www.sfei.org/documents/sediment-for-survival>)

Additional Sediment Sources

- Navigational Dredging (about 60 percent of need)
- Excavated Upland Soil (about 30 percent of need)
- Tidal Flood Control Channels (almost 5 percent of need)
- Stored Behind Dams (about 20 percent of need)

Navigational Dredging

- US Army Corps of Engineers Projects
 - Oakland Navigational Channel Pilot Project (aka 50/50 Pilot Project)
 - Strategic Placement Pilot Project
 - Reissuance of Navigational Maintenance Dredging Permit
- Other Projects
 - Long-Term Management Strategy Strategic Workplan
 - Regional Sediment Strategy

Excavated Upland Soils

- Hazard Quotient Approach
 - South Bay Shoreline Protection Project
 - South Bay Restoration Project Screening Procedures (aka QAPP)
- Conceptual Site Model for Importing Soil
 - Application Process
 - Stockpiling
- Tunnel Muck Screening Methodology

Flood Control Channels

- Creek-To-Baylands Connection Study
 - Identify Connection Opportunities
 - Develop High-Level Guidance
- Bay Area Flood Protection Agencies Association
 - Testing Requirements
 - Placement Options

Tribal Beneficial Uses (TBUs)

- What are Tribal beneficial Uses?
- Defined by State Water Resources Control Board in 2017
- Identified as Priority Basin Planning Project in 2021

TBU Designation Process

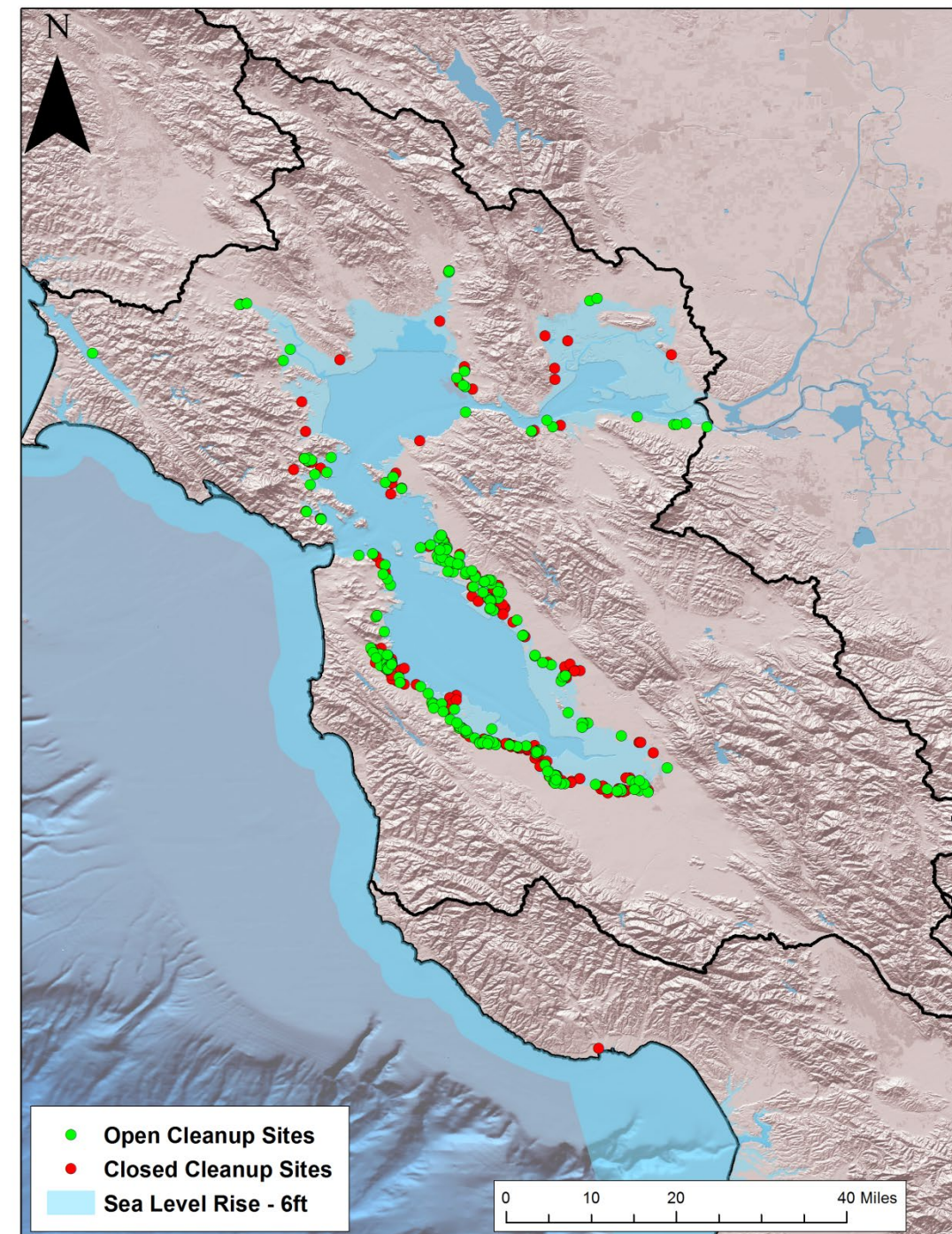
- **Ongoing Step:** Engage with California Tribes and the public
- **Step 0:** Prioritize Tribal Beneficial Uses in a triennial review
- **Step 1:** Gather information for designations
- **Step 2:** List Tribal Beneficial Uses and their definitions and Designate waterbodies or parts of a waterbody with the Tribal Beneficial Use(s)
- **Step 3:** Establish water quality objectives (*as needed*)
- **Step 4:** Establish implementation plans (*as needed*)
- **Step 5:** Establish permits and enforcement actions

What does a Tribal Beneficial Use do?

- Evaluate need for new or site-specific water quality objectives (WQOs) to protect the use
- Assess need for additional implementation actions to protect the use
- Incorporate into permit actions

Shoreline Cleanup Reprioritization

- One foot of sea level rise would impact 53 open and 47 closed cleanup cases
- **Six feet** of sea level rise would impact 250 open and 204 closed cleanup cases



The background is a solid blue color with several thin, wavy lines in shades of blue and green flowing across the top.

Thank You!