



BCDC: LOOKING BACK, LOOKING FORWARD

BAY PLANNING COALITION AGENCY ROUNDTABLE | JANUARY 26, 2023
JESSICA FAIN | DIRECTOR OF PLANNING, BCDC



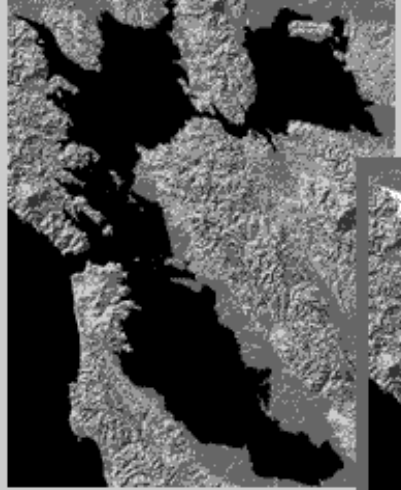
Agenda

- About BCDC
- 2022 Highlights
- 2023: What's next?

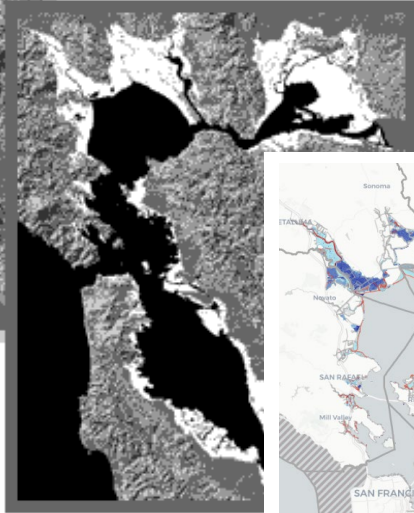
BCDC's **past and future**



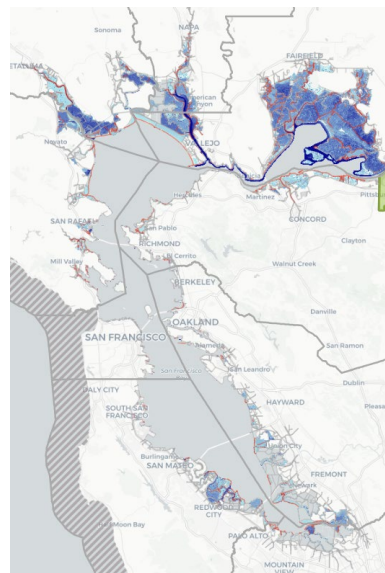
BCDC BECAME THE *FIRST*
COASTAL MANAGEMENT
AGENCY IN THE NATION IN 1965



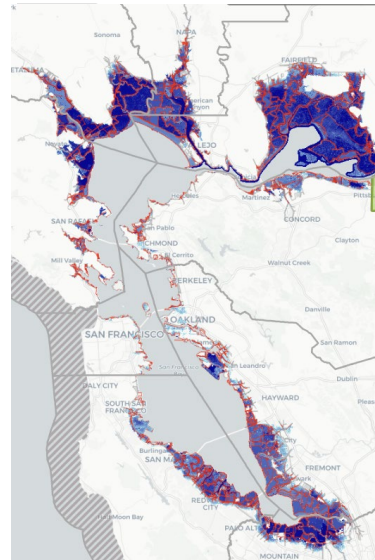
The Bay in 1849



Bay fill in 1965



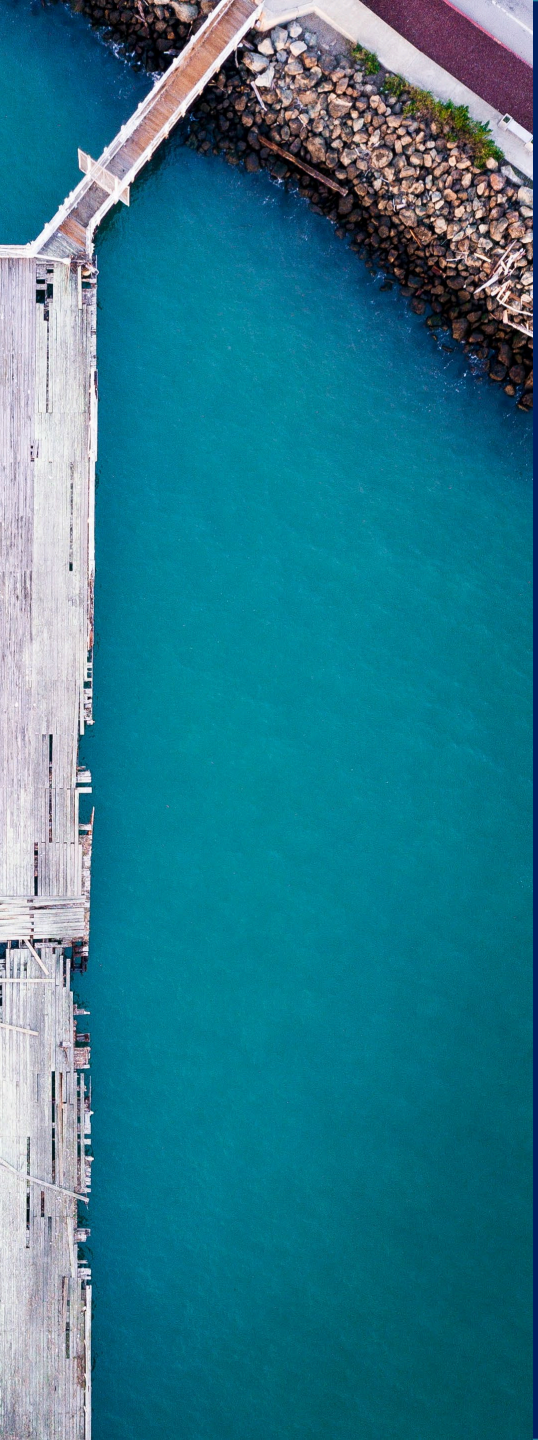
*Sea level rise
1 foot by 2050*



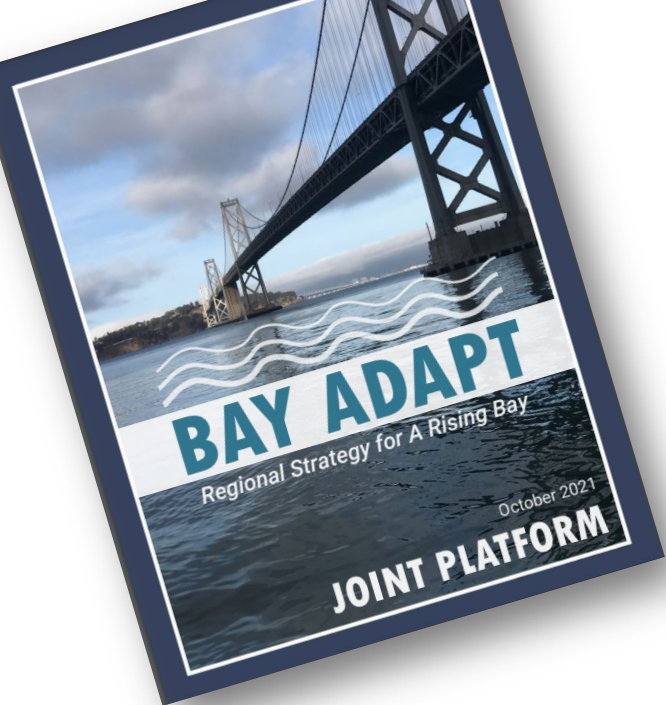
*Sea level rise
6 feet by...*



Photo credit: KQED Saving the Bay (2011)



2022 YEAR IN REVIEW

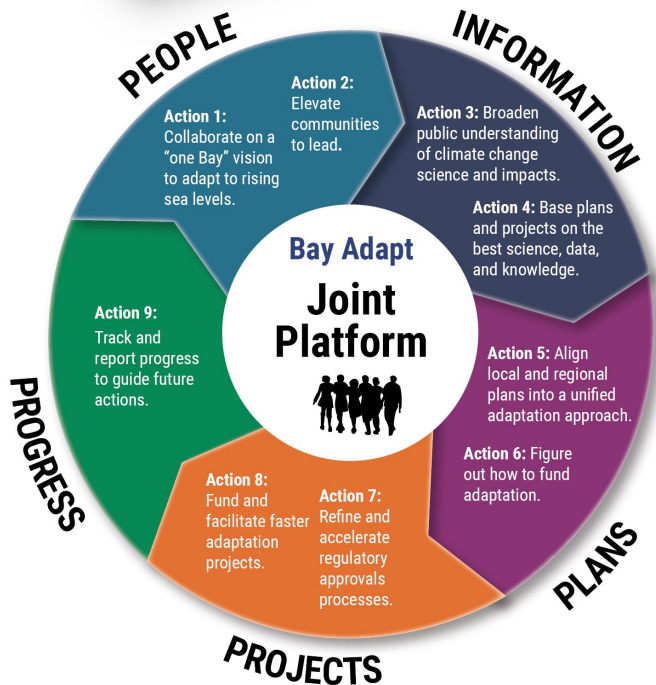


BAY ADAPT

REGIONAL STRATEGY FOR A RISING BAY

Joint Platform

A BCDC-led initiative that brings together partners across the San Francisco Bay Area to establish regional agreement on the actions necessary to protect people and the natural and built environment from rising sea levels.

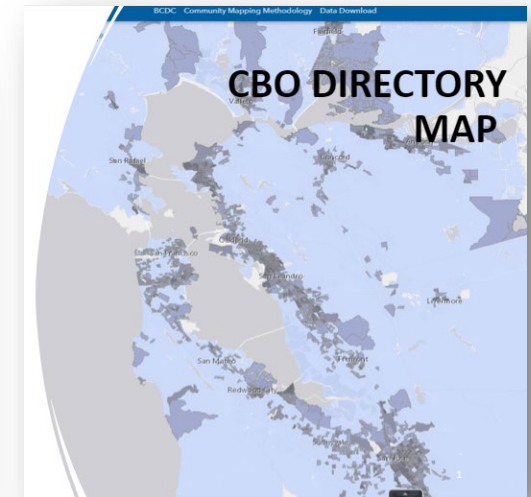
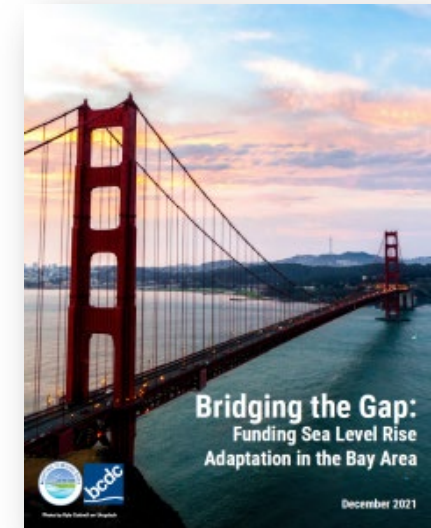
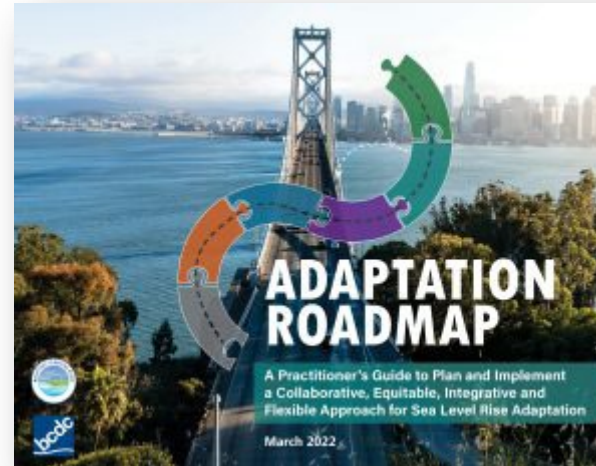


- Engaged over **360+** participants in two public workshops
- **10** Leadership Advisory Group meetings, **10** focus groups and many working groups sessions,
- Gave over **50** presentations around the region
- Joint Platform: Guiding principles, **9 actions** and **21 tasks**
- Regional plan **integration & adoption**
- **Over 55 endorsements** from cities, counties, and organizations
- Raised **\$5M+** for implementation

2022: YEAR IN REVIEW

Climate Adaptation

- New publications
- Maps
- Collaborations



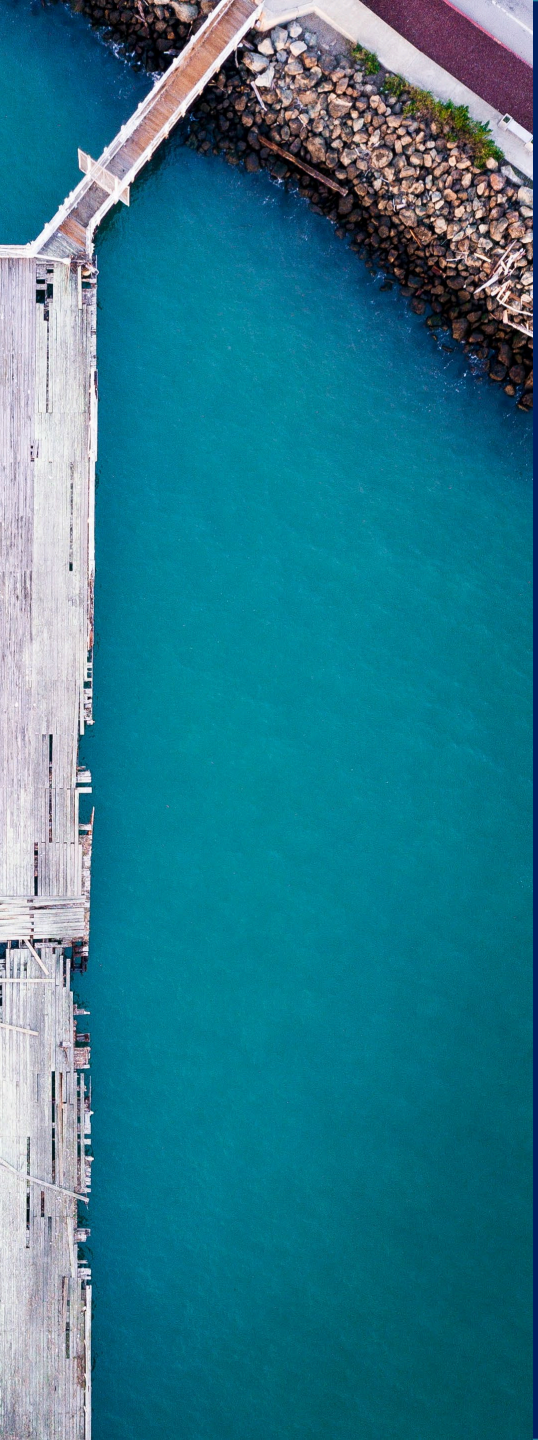
[adaptingtorisingtides.com
bcdc.ca.gov/data.html](https://adaptingtorisingtides.com/bcdc.ca.gov/data.html)

2022: YEAR IN REVIEW

Permitting & Policy

- 157 permits issued
- Howard Terminal Bay Plan Amendment & SRCD Local Protection Plan Amendment
- Ongoing Participation in the Bay Restoration Regulatory Integration Team (BRRIT)





2023: WHAT'S AHEAD?

Vision

BCDC will be a proactive and responsive, equitable, and collaborative organization that successfully addresses the regulatory and planning challenges facing the Bay, its shoreline, and the communities that it serves.

Goals

- 1** Lead regional planning efforts that result in successful and equitable adaptation, restoration, development, and public access projects for the Bay Area in light of rising sea levels.
- 2** Review BCDC's regulatory and planning functions to create a more unified and consistent regional-scale approach to managing the Bay and its shoreline in light of the uncertain future caused by rising sea levels.
- 3** Implement equity initiatives and practices throughout BCDC's policies, programs, and processes to resolve historic inequities.
- 4** Develop and implement more effective methods to communicate more successfully externally with stakeholders and internally among divisions.
- 5** Build and maintain an adequately resourced and more responsive and diverse organization that can meet its growing challenges more effectively and sustainably.



Anticipated Outcomes

- Through BCDC's bold leadership and collaboration, the Bay Area is prepared to adapt faster, better, and more equitably to rising sea levels, protect and restore its natural habitats, and increase access to the Bay.
- Enlarge the focus of BCDC's regulatory program to permit larger-scale and more complex subregional projects that are aligned with the Regional Shoreline Adaptation Plan.
- By advancing equity practices internally and externally BCDC will seek to eliminate its past historic disparities and achieve tangible equitable results for its stakeholders and the communities it serves moving forward.
- BCDC will be more transparent and accessible to all, and Commissioners, staff, and stakeholders will have a shared knowledge of the agency's priorities and objectives and have meaningful opportunities to shape policies.
- BCDC will better fulfill its mission by increasing its capacity and attracting and retaining a more diverse staff and Commission who are responsive to the variety of diverse communities around the Bay.

ENVIRONMENTAL JUSTICE & EQUITY

- New hires
- EJ in Permitting: Tools & Resources
- Racial Equity Action Plan
- Tribal Engagement
- Bay Adapt
- EJ Advisors



Implementing **Bay Adapt**

1

Increasing
**Community
Capacity**

2

Regional
**Shoreline
Adaptation
Plan**

3

Regulatory
**Improve-
ments**

4

Regional
**Coordination
& Communi-
cation**

REGIONAL SHORELINE ADAPTATION PLAN

Regional **Shoreline Adaptation Plan**



Develop Regional Sea Level Rise
Adaptation Planning Guidelines



Guide creation of Sub-Regional
Implementation Plans with Local
Jurisdictions



Provide best available information, maps
and tools

Sea Level Rise Adaptation Funding and Investment Framework



Goal 1.
Calculate
Funding Needs
and Revenues

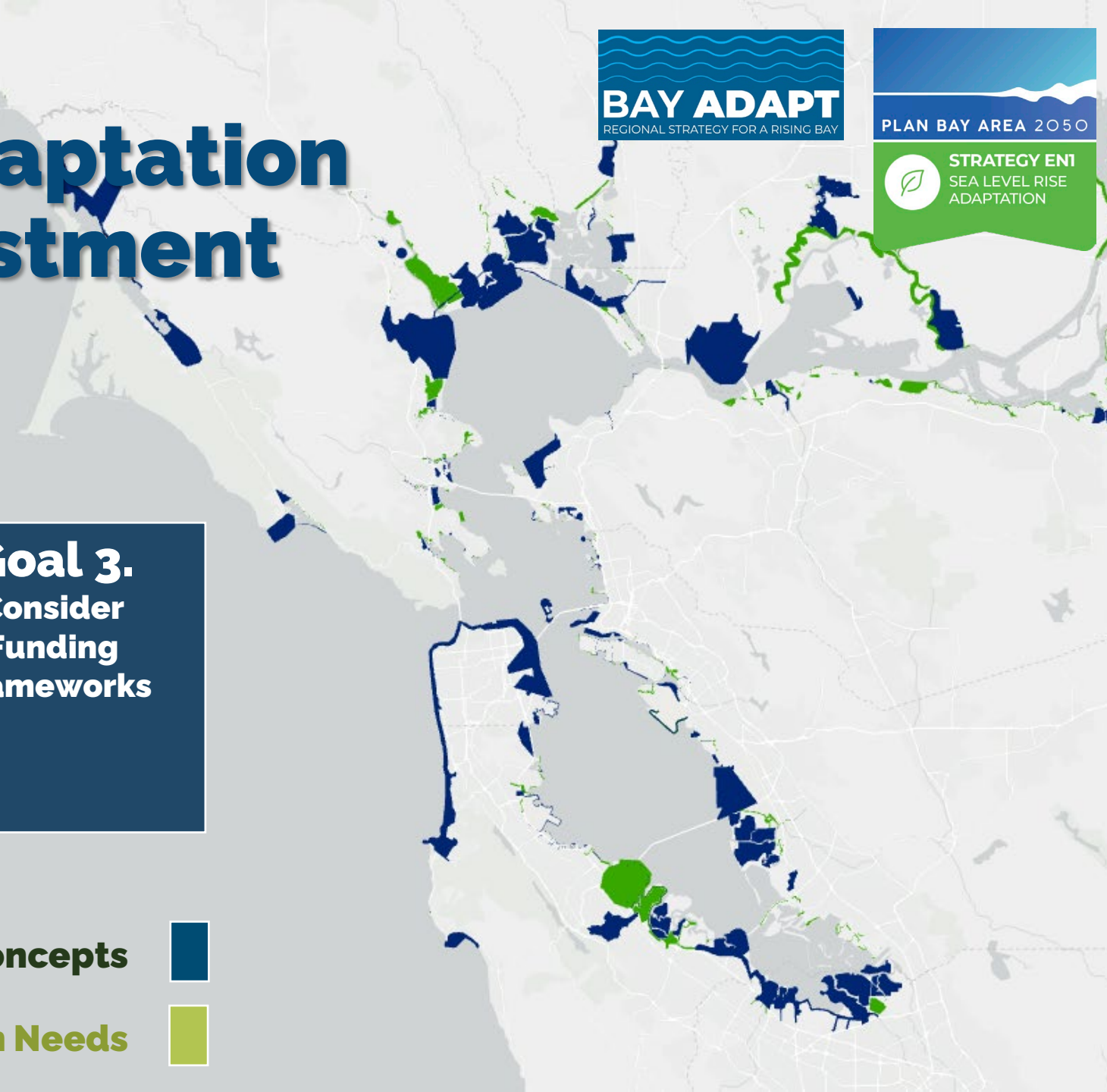
Goal 2.
Analyze Possible
New Revenues

Goal 3.
Consider
Funding
Frameworks

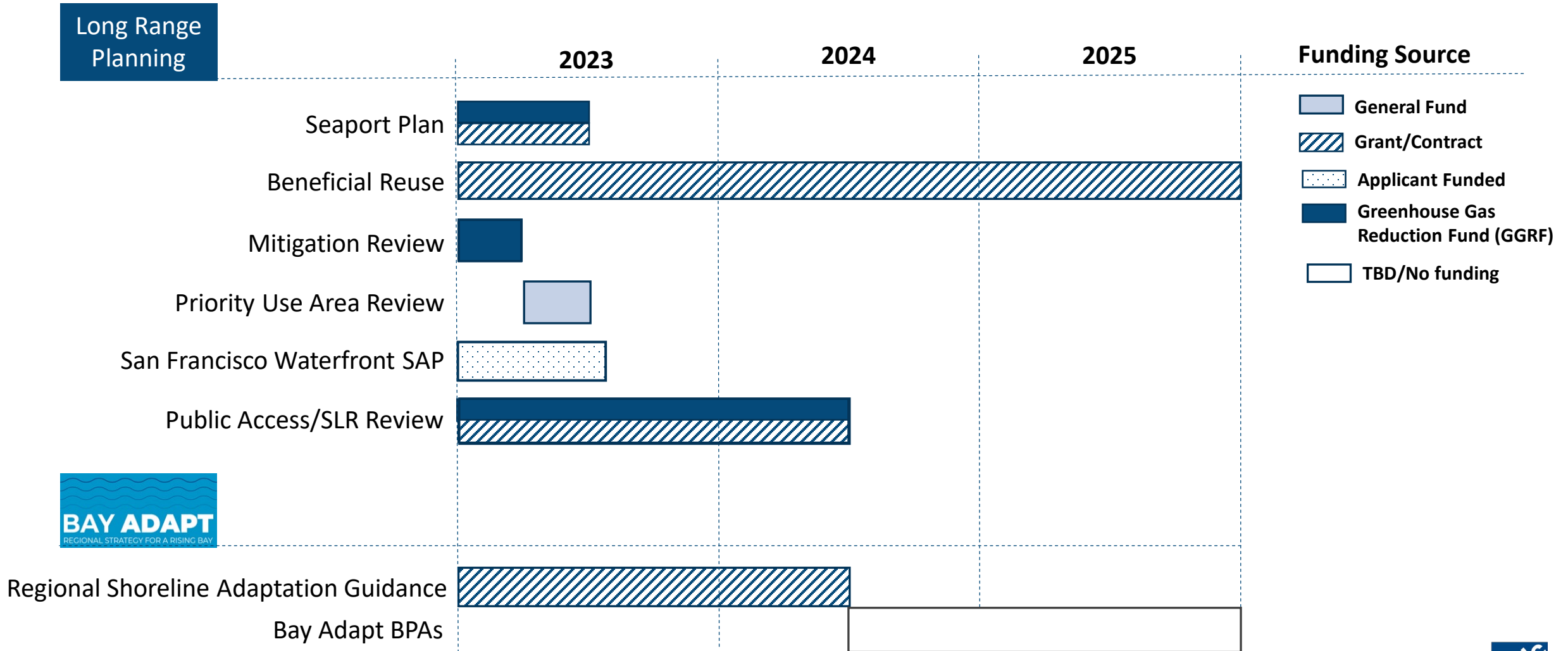
Local Adaptation Projects and Concepts



Placeholder Adaptation Needs



POLICY AREAS NEXT THREE YEARS...



SAN FRANCISCO BAY SEAPORT PLAN

Bay Plan Amendment 1-19



BENEFICIAL REUSE OF SEDIMENT PROJECT



- Engage stakeholders to develop a Beneficial Reuse strategy and roadmap.
- Explore amendments to the Bay Plan
- Prepare a Financing Strategy to support beneficial reuse

MITIGATION POLICY REVIEW

Guidance and interactive
training tool

Collection

Mitigation at BCDC

A Guide to BCDC's habitat mitigation policies & how they've been applied

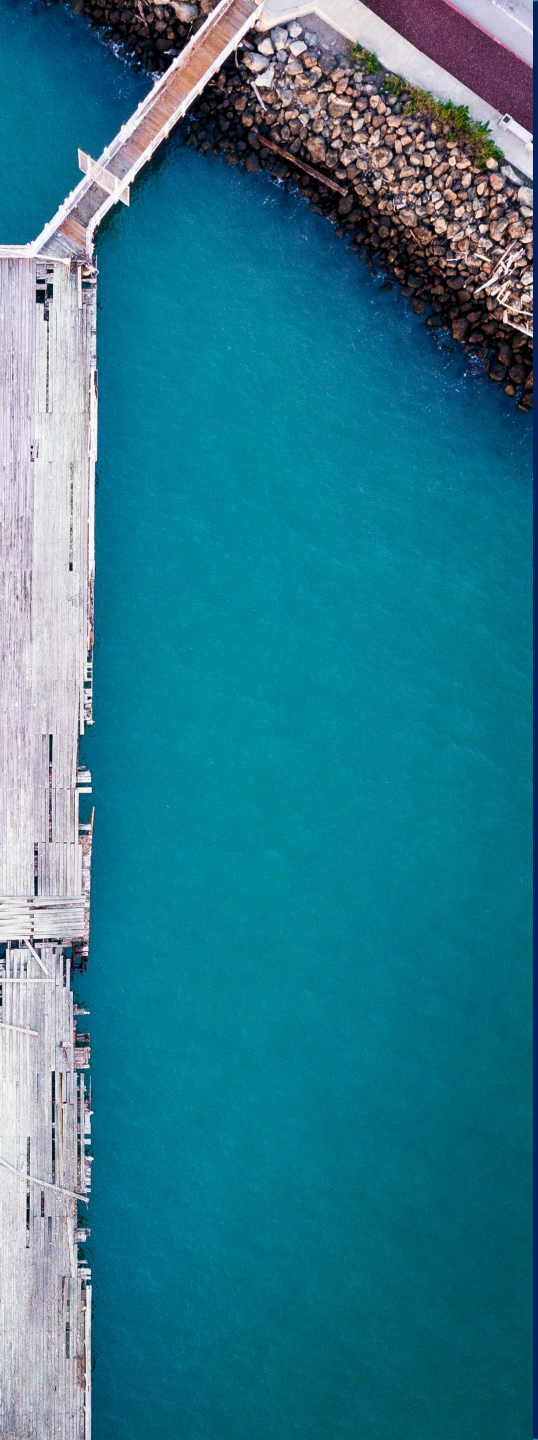
BC DC

Get started



REGULATORY PROGRAM

- Compliance Unit – NEW!
- Bay Adapt Regulatory - New!
- A Busy BRRIT
- Sea Level Rise and Adaptive Management



JESSICA FAIN, DIRECTOR OF PLANNING

JESSICA.FAIN@BCDC.CA.GOV

<https://www.bcdc.ca.gov/>

www.bayadpapt.org

www.adaptingtorisingtides.org