

Warner Chabot

Executive Director, San Francisco Estuary Institute

A scenic landscape photograph of San Francisco. In the foreground, a grassy hillside is covered with lush green trees and shrubs. The middle ground shows the San Francisco Bay with the Golden Gate Bridge spanning across it. In the background, the San Francisco skyline is visible under a blue sky with scattered white clouds. A single bird is seen in flight over the water.

SFEI

San Francisco Estuary Institute







The Bay Area





SFEI
SAN FRANCISCO
ESTUARY INSTITUTE

Ancestral Tribal Lands







US sea levels will rise rapidly
in the next 30 years, new
report shows



Sea Level Rise

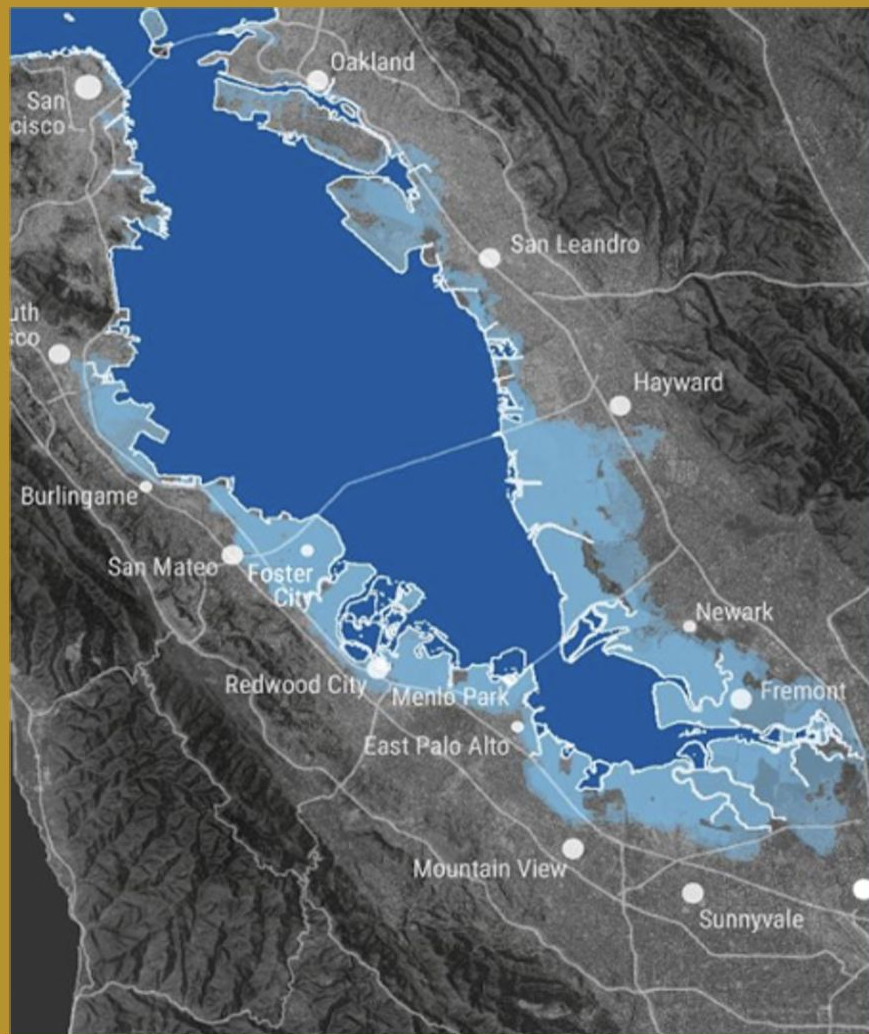
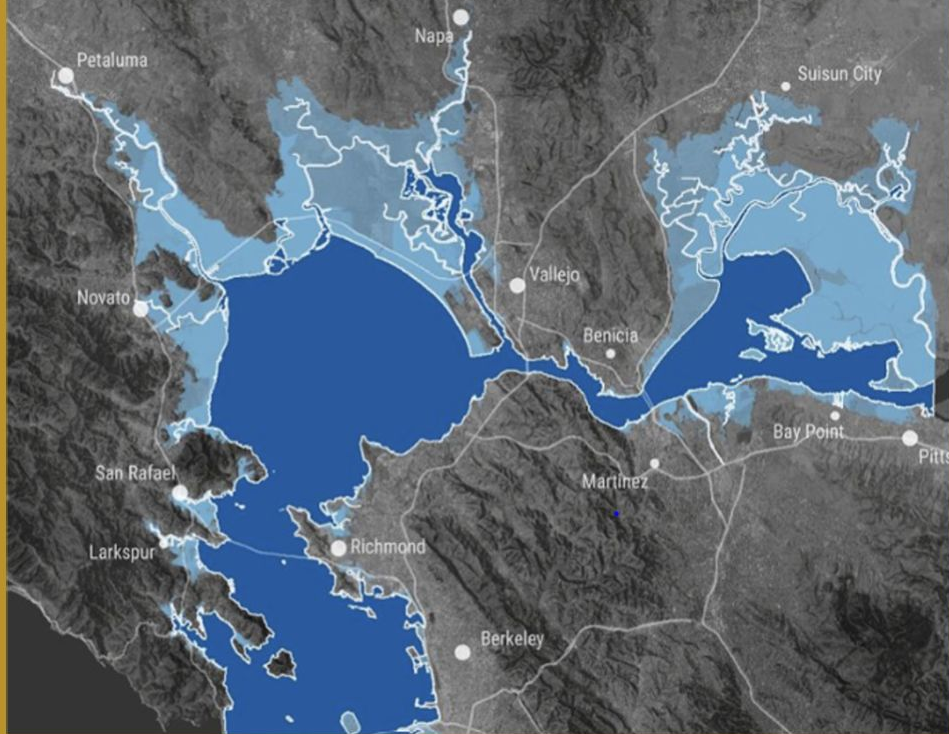
Rising
Groundwater

Lowland
Flooding



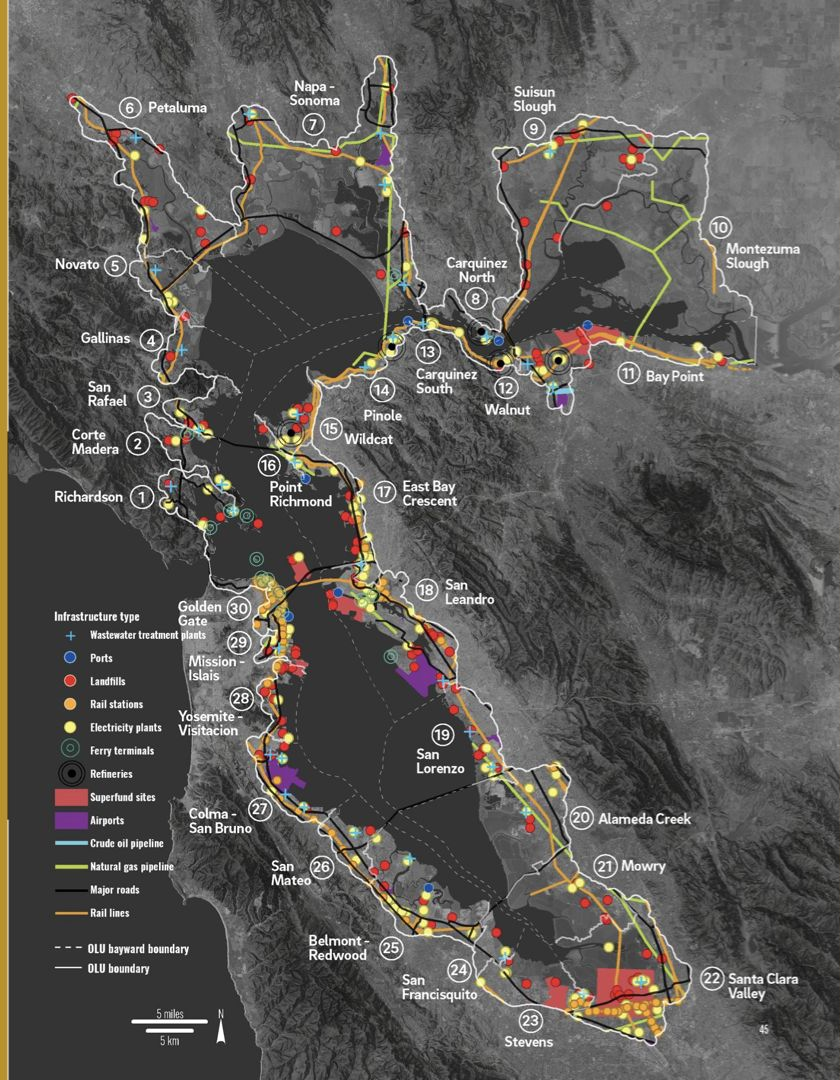
San Francisco Bay Area Flood Risk
with **SEA LEVEL RISE**

5.0 FT



Key Infrastructure

- Ports
- Landfills
- Airports
- Pipelines
- Wastewater plants





Shoreline Assets At-Risk by 2 Meters of Sea Level Rise + 100 Year Storm

S.F Bay Shoreline

\$100 Billion

CA

\$50 Billion

Governance



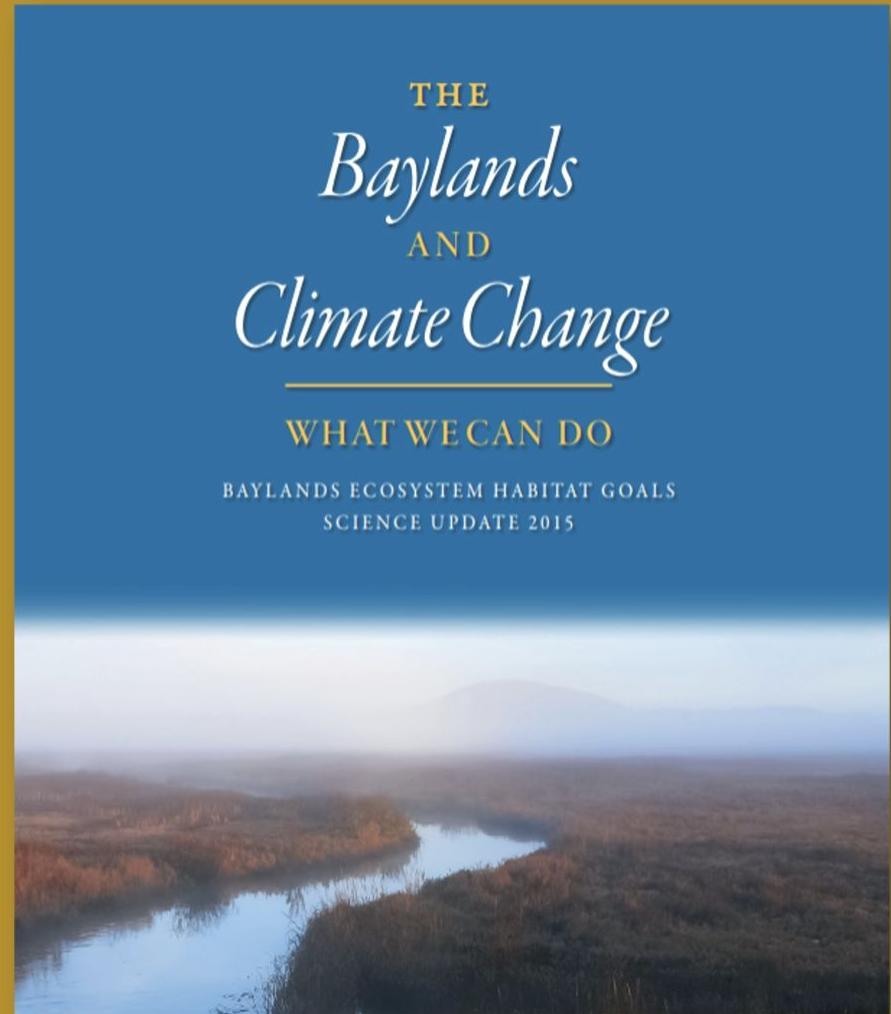
S.F. Bay Adaptation Leadership

- Baylands Goals Report

- 2015 Goals Update

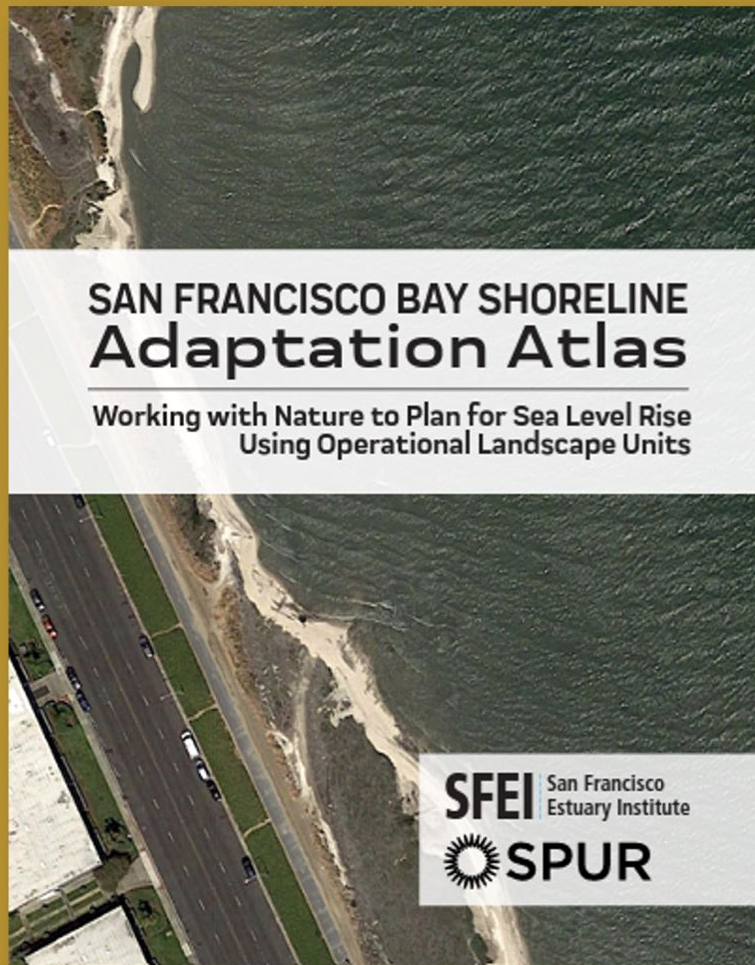
<https://www.sfei.org/projects/baylandsgoals>

- Measure AA, Restoration
Authority

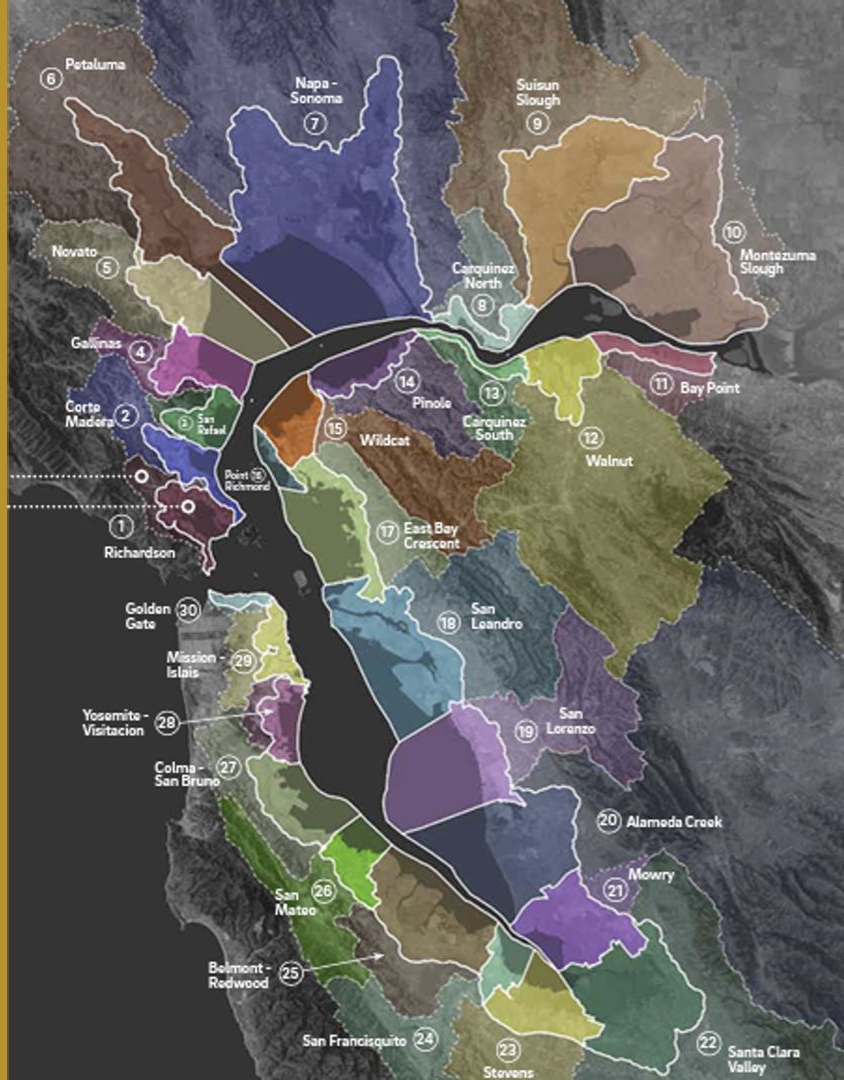


Adaptation Atlas

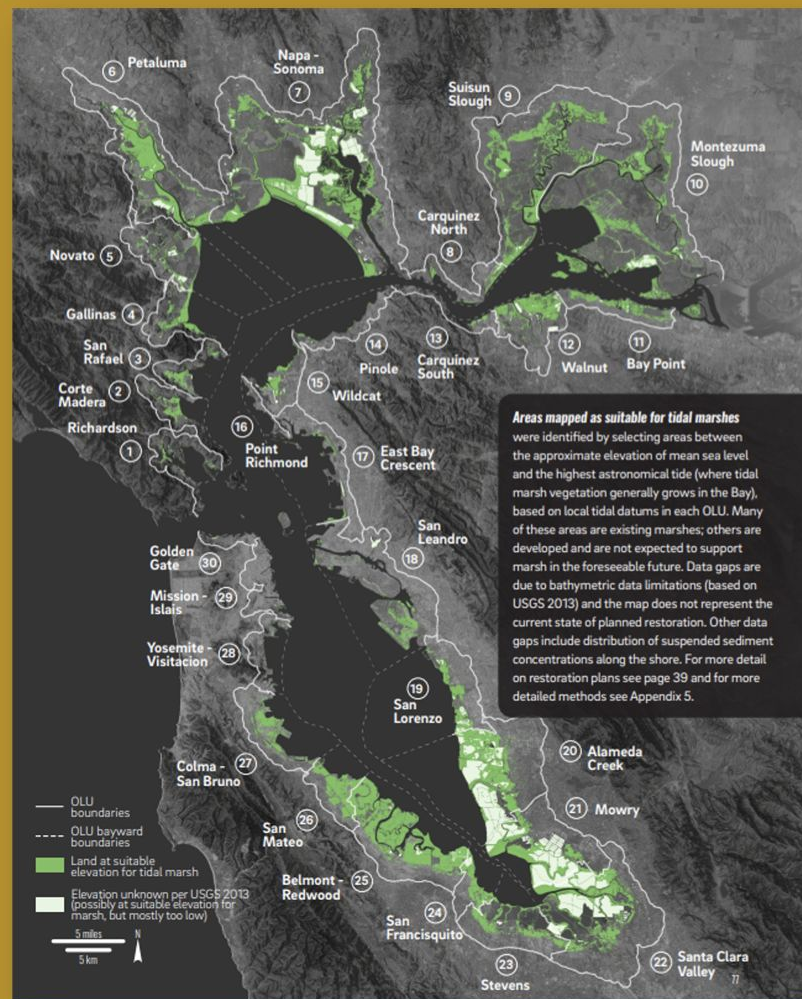
- A place-specific framework
- Nature-based and hybrid options
- Spans jurisdictions
- <https://www.adaptationatlas.sfei.org>



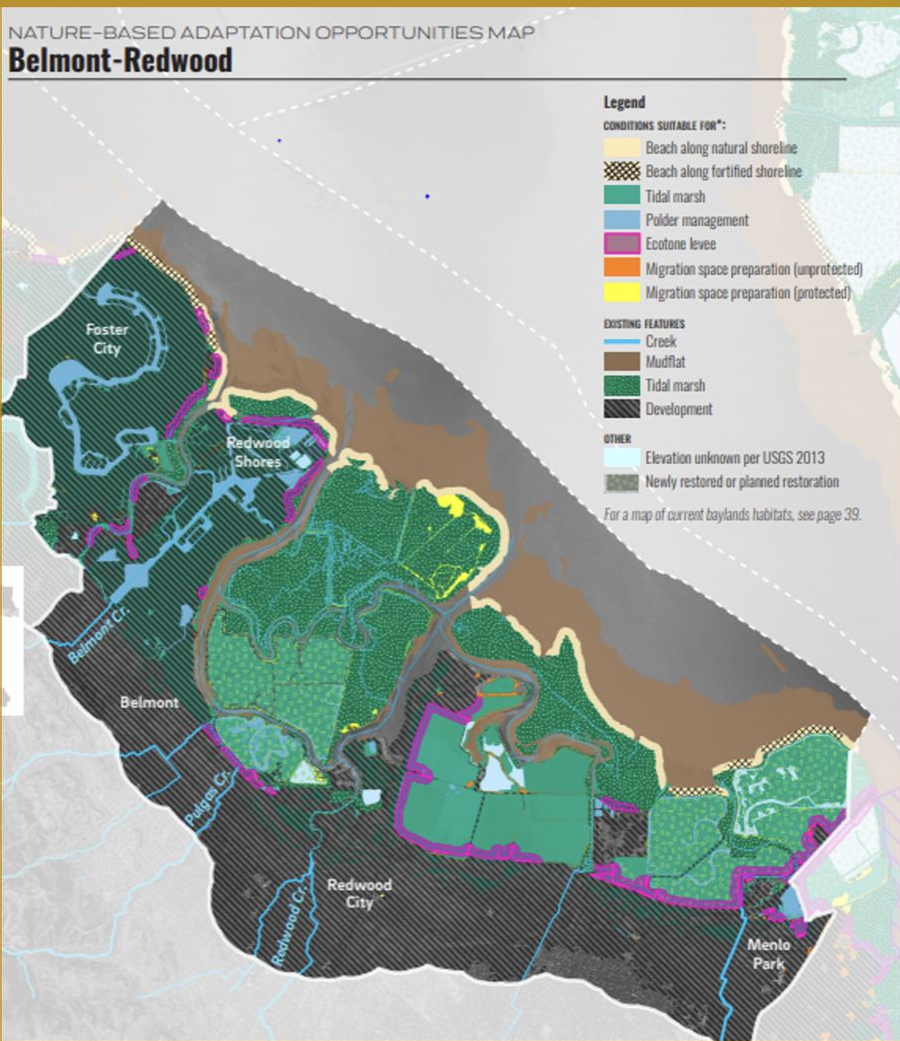
Operational Landscape Units



Tidal Marsh Restoration Options



Belmont-Redwood

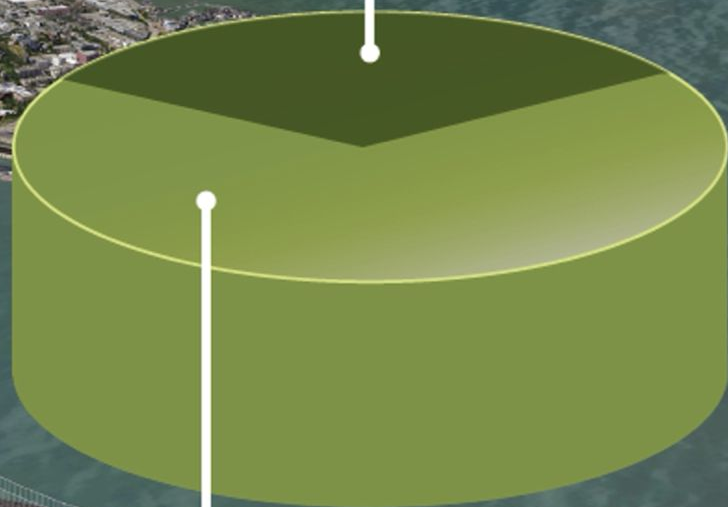


Adaptation Atlas Download:

<https://www.adaptationatlas.sfei.org>

VOLUME OF SEDIMENT NEEDED FOR TIDAL WETLANDS AND MUDFLATS BY 2100

Amount of sediment that can be
supplied by nature and current
management approaches



The sediment need that could be met by
changing management practices to access
more in-bay and watershed sediment



PLAN BAY AREA 2050

A VISION FOR THE FUTURE



BAY ADAPT

Regional Strategy for A Rising Bay

October 2021

JOINT PLATFORM



















THANK YOU

Contacts: warnerc@sfei.org



SFEI www.sfei.org