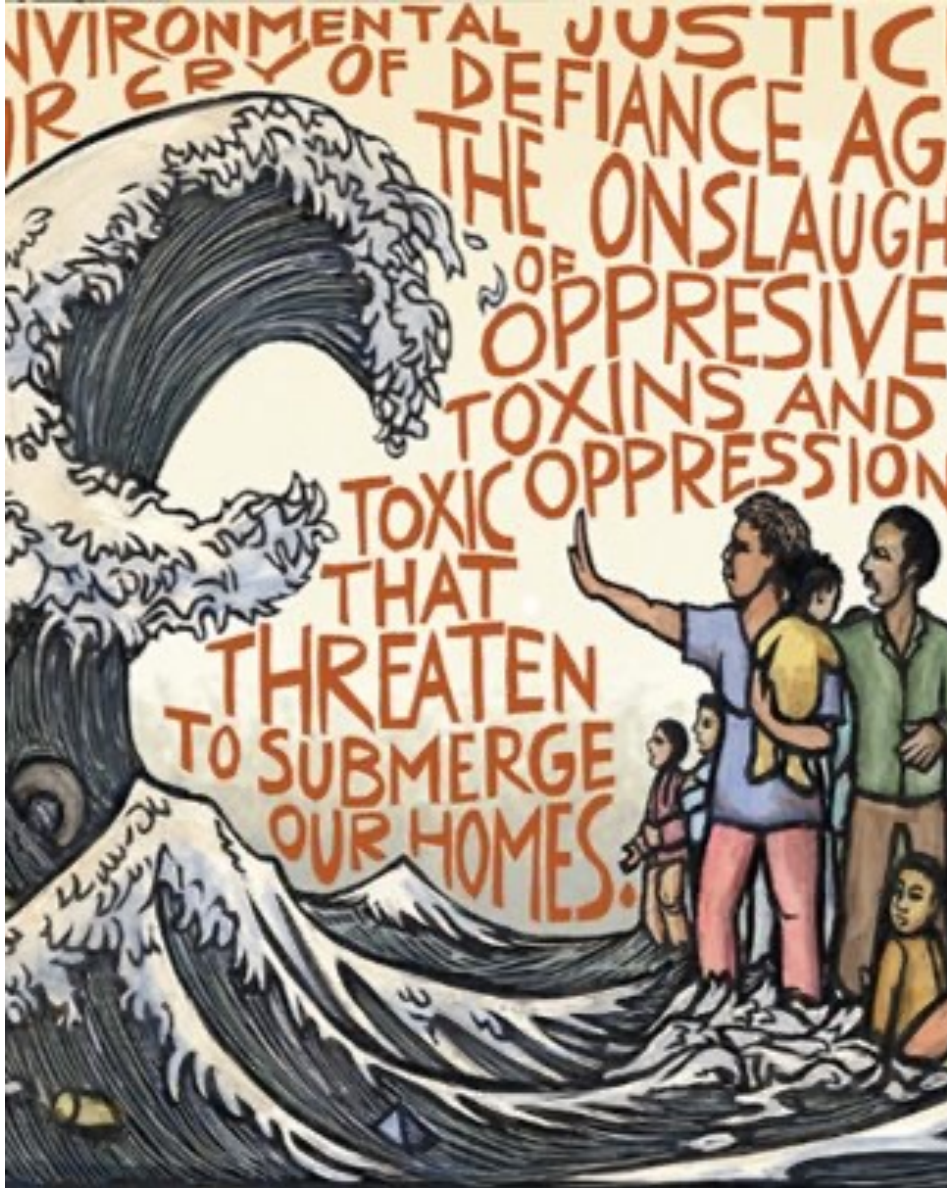


# Equity Speaker



**Jessica Fain**

**Director of Planning, San Francisco Bay Conservation and  
Development Commission**



# Toward a Resilient, Equitable Bay Area

Bay Planning Coalition Summit  
May 23, 2022



Jessica Fain  
Director of Planning  
Bay Conservation and Development Commission  
[Jessica.fain@bcdc.ca.gov](mailto:Jessica.fain@bcdc.ca.gov)



# Turning **Environmental Justice and Equity** into policy

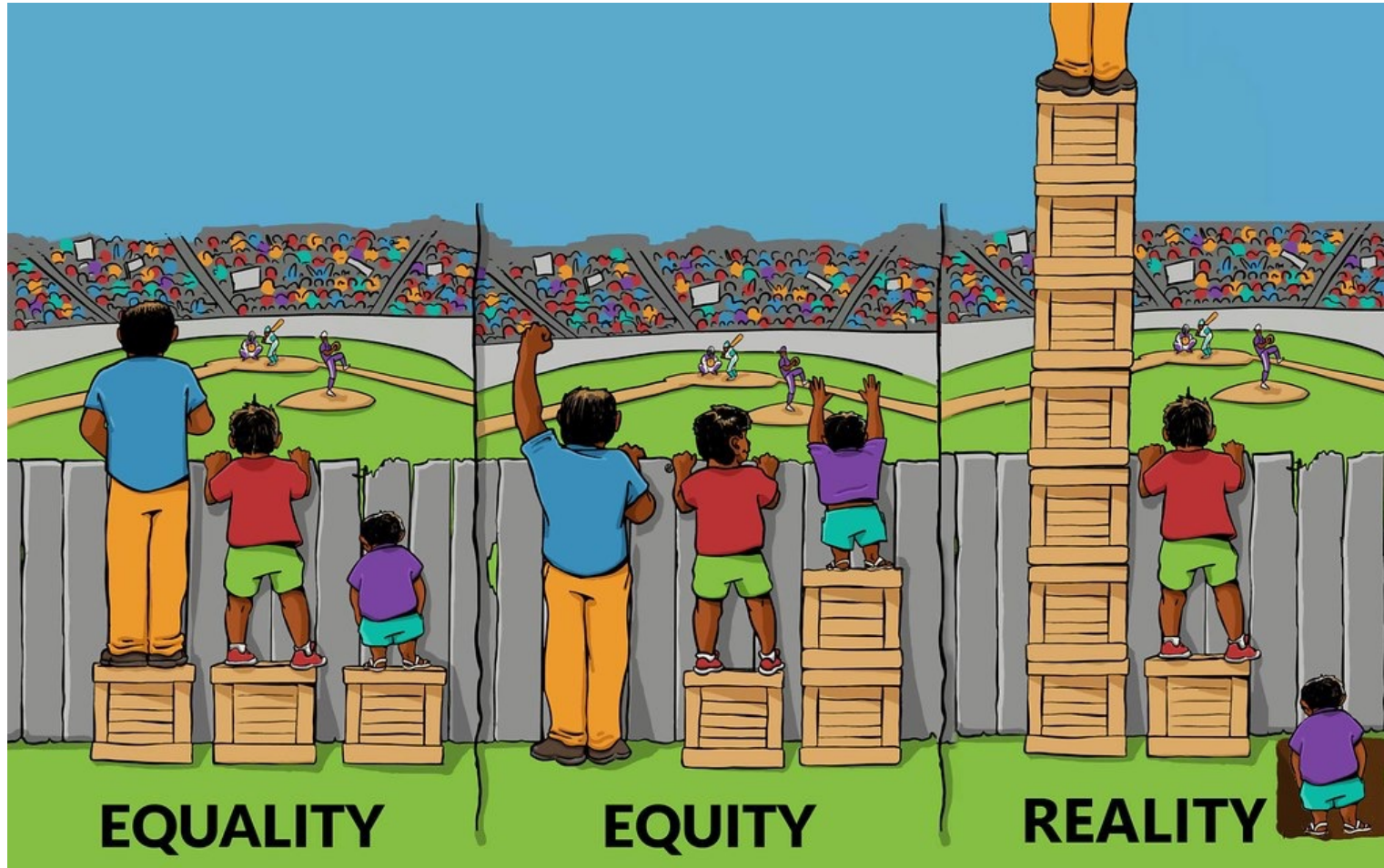
## **Environmental Justice**

*The fair treatment and meaningful involvement of people of all races, cultures, incomes and national origins with respect to the development, adoption, implementation and enforcement of environmental laws, regulations and policies*

1. Guiding Principles
2. Include environmental justice and social equity as early as possible in planning process
3. Meaningful Community Involvement
4. Fair Treatment and Disproportionate Impacts



# Turning **Environmental Justice** and **Equity** into reality



Cartoon comparing equality, equity, and reality (source: Flickr)

# Turning **Environmental Justice and Equity** into reality

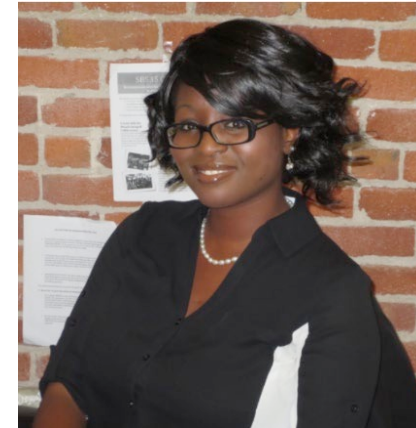
## Inaugural Environmental Justice Advisors



**Julio Garcia**



**Anthony Khalil**



**Marybelle Tobias**



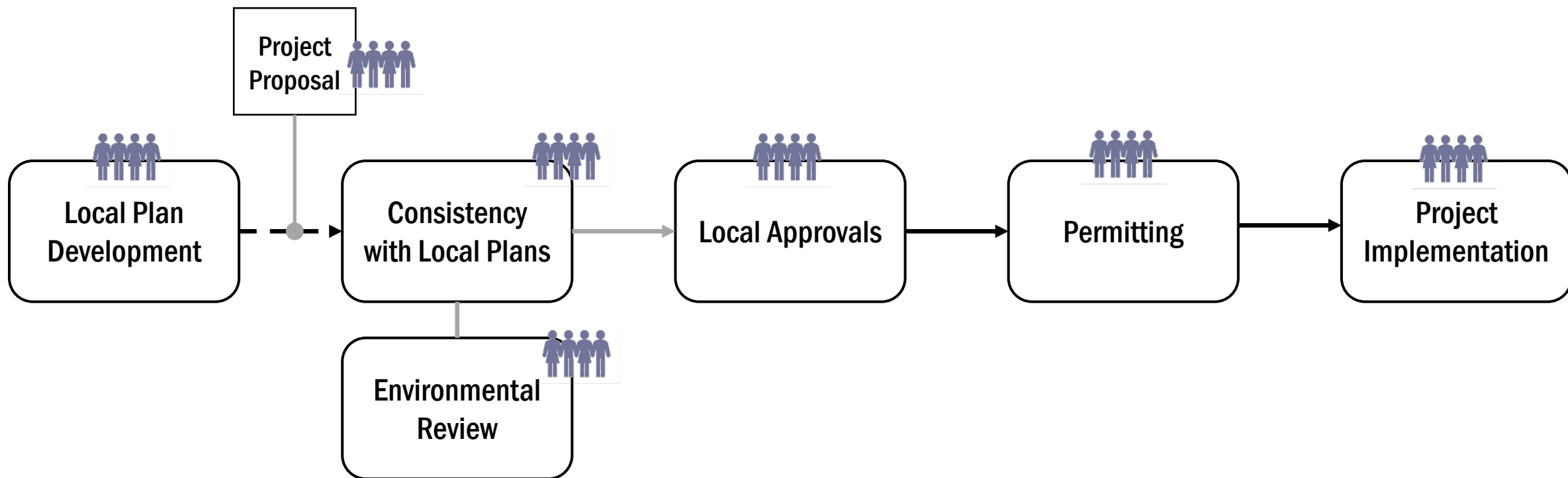
**Selena Feliciano**



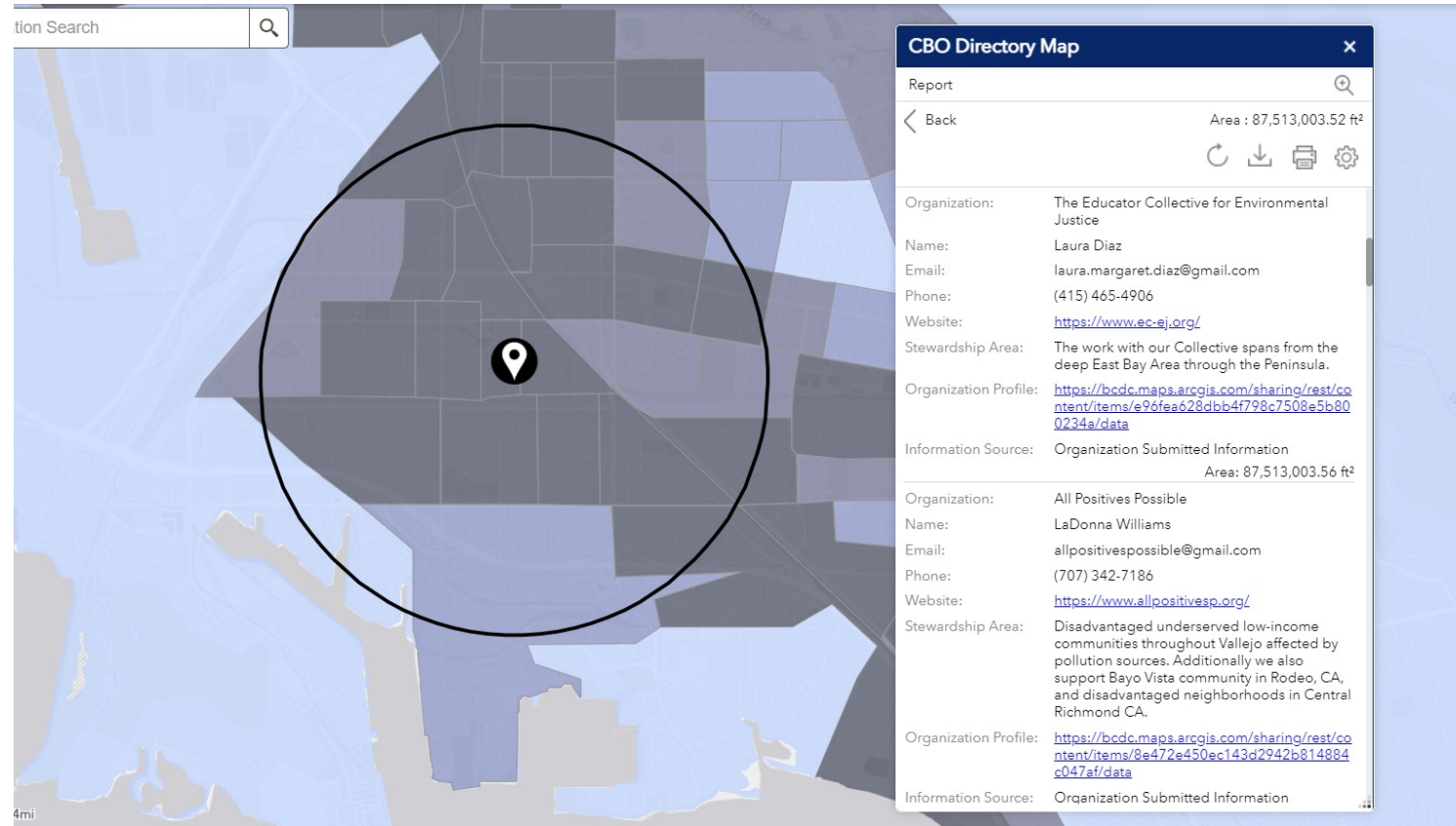
**Violet Saena**



**Janniece Murray**



# Turning **Environmental Justice** and **Equity** into reality



**Community Vulnerability Mapping & CBO Directory (NEW!)**

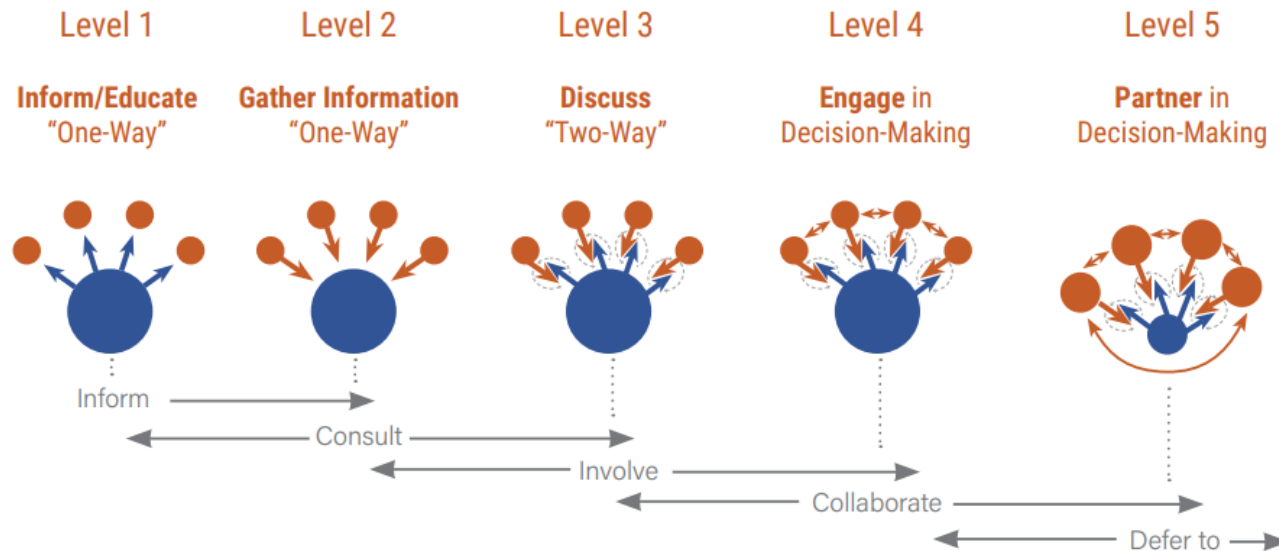
[www.bcdc.ca.gov/data/community.html](http://www.bcdc.ca.gov/data/community.html)



# Centering people in climate adaptation planning



## *Levels of Participation*



A community-based organization called Nuestra Casa, in East Palo Alto, has been developing community programs to educate residents on climate and environmental justice. Photo by Nuestra Casa.

**NEW! Adaptation Roadmap: A Practitioners Guide**

[www.adaptingtorisingtides.org/projects/adaptation-roadmap](http://www.adaptingtorisingtides.org/projects/adaptation-roadmap)



# FARTHER TOGETHER

Seven Best Practices for Engaging Communities  
to Create a Healthy, Resilient Region for All



1. **Budget** Wisely for Effective  
Community Engagement



2. **Expand** Engagement through  
Interagency Partnerships



3. **Co-Design** Your Process  
with Community



4. **Make** Engagement Activities  
Accessible and Relevant for All



5. **Identify** Locally Meaningful  
Vulnerabilities and Assets



6. **Prioritize** Community-Supported  
Resilience Actions



7. **Collaborate** to Bring Equitable  
Solutions to Fruition



# Final Thoughts

