

Camp Fire, Butte County

Notice: The information in this report is subject to change and the situation may have evolved since the compiling of this report. Information is source cited with time and date data in the Information Sources section.

BLUE Text = Newly added information and information that has changed since the last brief.

GREY Text = Information from the previous brief where the current status has not / could not be reverified.

November 15, 2018 3:30am

Overview

Fire Overview

Acres Burned [Change]	% Contained [Change]	Structures Threatened	Structures Destroyed	Fatalities	Evacuations
138,000 [+8,000]	35% [+0%]	17,500	10,321	56	YES

For reference: 1 sq mile = 640 acres; 1 football field = approx 1.32 acres

Utility Infrastructure Impacts

Power	Gas	Water	Telecom
Threats to infrastructure About 21,000 outages	Threats to infrastructure About 12,000 outages	Threats to infrastructure Boil water notices	Threats to infrastructure Outages

Community Infrastructure Impacts

Schools	Healthcare Facilities	Postal Facilities
Facilities Destroyed Closures	Significant damage to a hospital Evacuations	Closures

Transportation Infrastructure Impacts

Major Roads	County & Local Roads	Rail
Hwys 32, 70, 162, 191	Local road closures	Threats

Weather Concerns

Dry conditions with smoke locked in the valley impacting air quality and visibility will persist with daytime relative humidities 10-25%. Winds will remain 5 to 10 mph over the next few days. (65)

The first chance of precipitation still looks to be sometime around Thanksgiving, with low confidence on exact timing. Precipitation with this first weather system looks light, with now high intensity short duration rain events to trigger debris flows. However, light rain will impact any tent or outdoor shelter locations. Timing of onset look like late Tuesday or Wednesday. (65)

The California Resiliency Alliance is a 501c3 non-profit empowering local and regional resiliency efforts through cross-sector information sharing and partnerships. The content in this brief provided for internal use by California Resiliency Alliance members. Copyright owners retain all copyrights to material referenced.

Weather Information

Source: Cal OES Daily Situation Report - November 14, 2018

- Very dry conditions to continue through Monday, with areas of moderate night/morning N-NE winds
- High pressure will continue to produce warm, dry conditions through Monday.
- Night/morning N-NE gusts to 20 mph, local gusts to 25-30 mph in wind-prone spots from the western Cascade-Sierra slopes to the Coast Range through Monday. Light upslope/up-valley winds during afternoons.
- Afternoon Relative Humidity (RH) will be low (5-15%) most afternoons this week with poor overnight recovery (10-25%) in many areas, particularly mid and upper slopes. Some valley locations that have been very dry may see RH will increase in a few days to afternoon mins of 15-20% and overnight recoveries of 25-35%.
- Afternoon high temperatures will continue 5-10 degrees above seasonal normals with warmest inland areas mostly in the mid 70s. Overnight lows will be pretty close to seasonal values, and overnight frost/freezing conditions are likely to become a bit more widespread.
- Onshore flow, deeper marine layer and higher RH developing Tuesday. Widespread rain and high elevation snow becoming more likely Wednesday/Thursday.

Red Flag Warnings

As of Thursday morning there are no red flag warnings in effect.

Current Watches, Warnings or Advisories:

California: <https://alerts.weather.gov/cap/ca.php?x=1>

Butte County: <https://alerts.weather.gov/cap/wwaatmget.php?x=CAC007&y=1>

Fire Overview

Acres Burned [Change]	% Contained [Change]
138,000 (75)* [+8,000]	35% (75)* [+0%]

* Change from 11/13/18 Sit Rep Brief, the 11/12/18 sit rep acres burned was 113,000 and 25% contained

Start Date	Estimated Containment Date
November 8, 2018 (1)	November 30, 2018 (75)

Lead Agency(ies)
Unified Command: CAL FIRE, Butte County Sheriff Department, Paradise Police Department, U.S. Forest Service (75)

Location
Pulga Road at Camp Creek Road near Jarbo Gap (1)

Cause of Fire
Under Investigation (75)

Hashtags
#CampFire

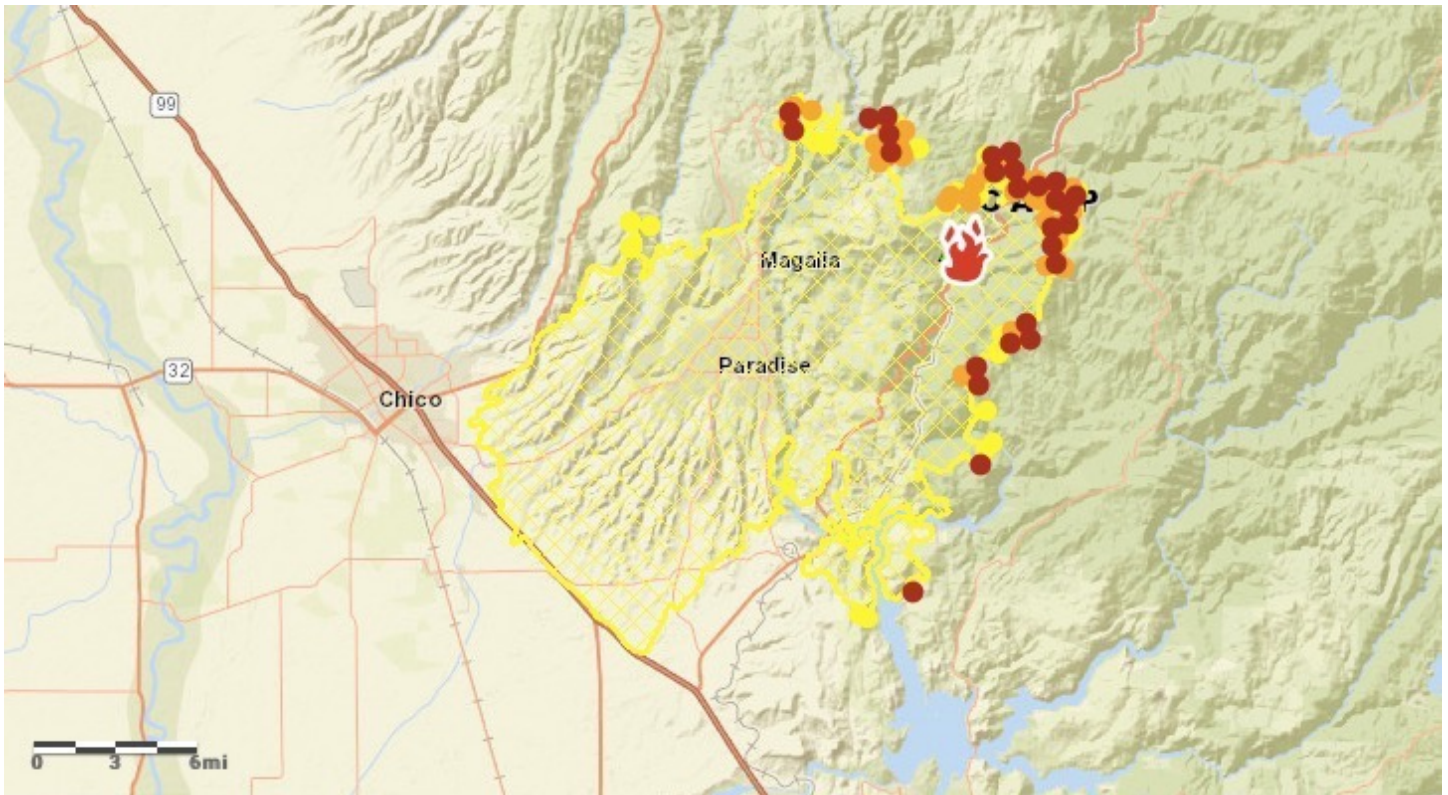
Fire Information
Zip Codes Containing the Burned Areas: 95916, 95926, 95928, 95929, 95938, 95940, 95942, 95954, 95965, 95966, 95967, 95969, 95973, 95976, 95978
Surrounding Zip Codes:
Fire Information Line: 530-538-7826
Town of Paradise Call Center: 530-879-3708



Projected Fire Activity

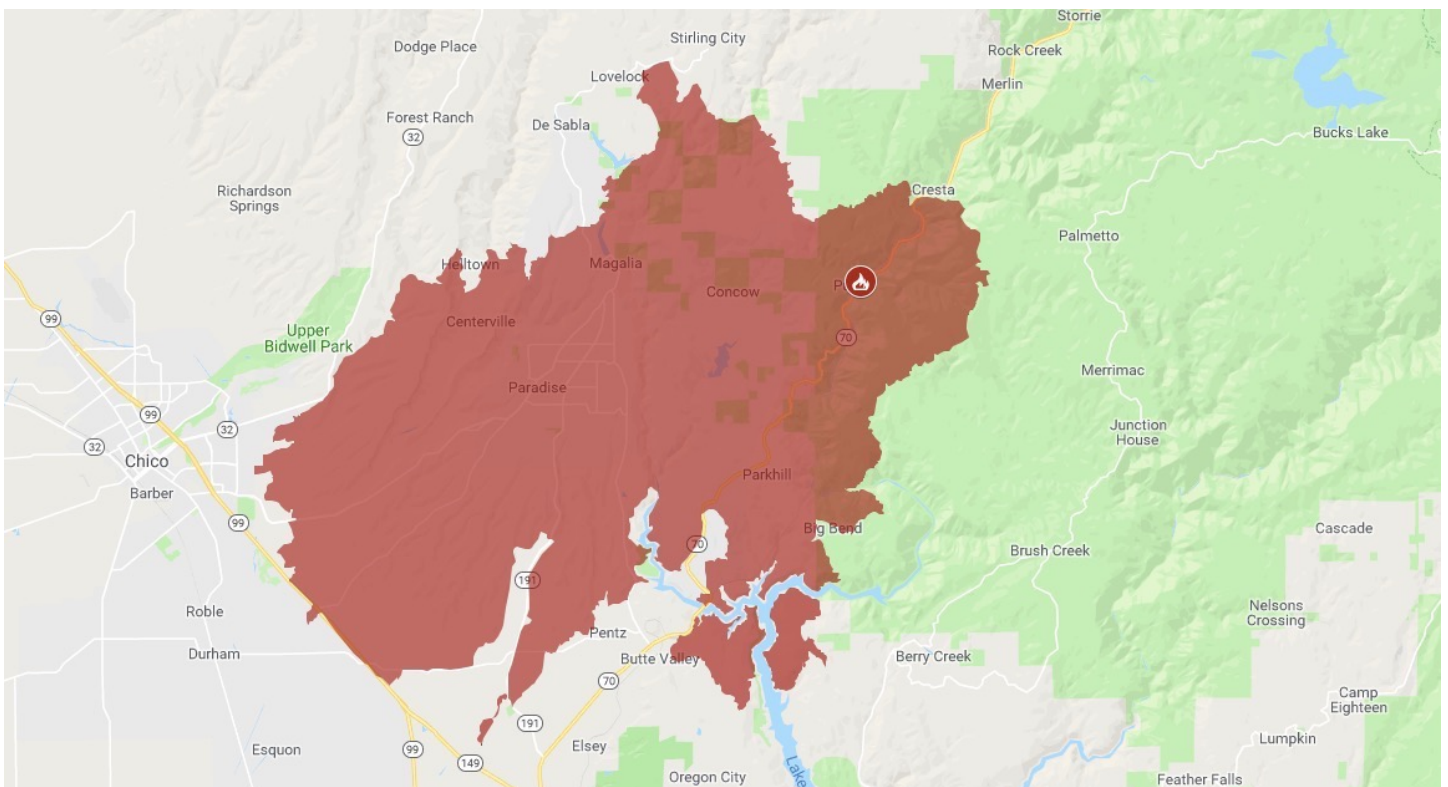
The fire remained active throughout the day in various areas around the perimeter. Firefighters have been working diligently to attack the fire through direct and indirect methods. As weather and visibility allow, fixed-wing aircraft and helicopters have been working in coordination with ground crews to slow the fire's progress. Firefighters continue to strengthen and improve containment lines around the fire. (75)

Fire Maps



Source: [National Interagency Fire Center](#) (Nov 14, 2018)

Note - Cloud cover or heavy smoke can impact satellite readings.



Source: [Cal Fire 2018 Incidents Map](#) (Nov 14, 2018 9:36am)

Utility Infrastructure Impacts

Sources reference number (#) corresponds to number in Information sources section.

Impacts Overview

The fire will continue to threaten buildings and infrastructure in the communities of Town of Paradise, Chico, Magalia, Concow, Stirling City, Yankee Hill, Big Bend, Butte Creek Canyon, Butte Valley, Honey Run, Helltown, Centerville, Forest Ranch, Paradise Pines, Cherokee, Berry Creek. (79)

Power & Gas

Power Infrastructure Threats	<p>Continued threat to PG&E Powerline infrastructure (79)</p> <p>Three hydroelectric plants at Poe, Cresta, Desable and Lime Saddle are currently threatened. (79)</p> <p>The following substations are offline: Paradise, Centerville and Big Bend. (79)</p>
Power Outages	<p>In all, approximately 23,000 customers in Butte County have been without power due to fire impacts. Approximately 2,200 customers who lost power due to the impacts of the Camp Fire have had electrical service restored. (80)</p> <p>PG&E Power Outage Map: https://m.pge.com/?WT.pgeac=Alerts_Wildfires-2018_Outages#outages</p>
Gas Infrastructure	<p>Threat to PG&E gas line servicing the Town of paradise (79)</p> <p>PG&E has assessed 100% of its gas assets in Paradise. Over the coming weeks, PG&E gas service representatives will safely restore customers' gas service and relight pilot lights when it is safe to do so. (80)</p>
Gas Outages	<p>Approximately 12,000 customers impacted (80)</p>

Water & Wastewater

Water Infrastructure	<p>Threats to the watersheds for Lake Orville and Concow Reservoir (79)</p>
Boil Water & Do Not Drink Notices	<p>Boil water advisories are in place for customers of the following water districts/ systems:</p> <ul style="list-style-type: none"> • Paradise Irrigation District - all customers (66,76) • Big Bend Mobile Home Park (66) • Gran Mutual Water Company (66,78) • Blue Oak Terrace Mutual Water System (66) <p>Do Not Drink Notice</p> <ul style="list-style-type: none"> • Del Oro Water Company (77)

Telecommunications

Communications	<p>Communication infrastructure still threatened (79)</p> <p>The fire has burned through an AT&T fiber impacting impacts 7 cell site operations, AT&T repair crews waiting access from Cal Fire to start restoration, no eta. (66)</p> <p>12 T-Mobile sites, 4 Verizon sites, and 8 Sprint sites down (66)</p>
911 Systems	<p>Customers served out of the Paradise main CA Central Office with phone numbers beginning with 530-872, 530-876, 530-877, are unable to make 9-1-1 calls. Wireless 9-1-1 calls are not being impacted, there is no estimated time of repair. The Paradise CA Central Office community isolation is ongoing due to the Camp Fire. (66)</p>

Community Infrastructure Impacts

Sources reference number (#) corresponds to number in Information sources section.

Structures Threatened, Damaged, and Destroyed

Structures	Threatened	Damaged	Destroyed
Single Residence	15,500 (79)	115 (79)	8,650 (79)
Multiple Residence	-	13 (79)	106 (79)
Mixed Residential/Commercial	-	-	4 (79)
Commercial	2,000 (79)	48 (79)	260 (79)
Other Minor Structures	-	41 (79)	1,301 (79)
Total	17,500	217	10,321

Damage inspection teams are currently conducting a thorough assessment of damaged/destroyed structures in Concow, Magalia and Paradise. Due to the magnitude of damaged destroyed structures, this effort will take a few more operational periods. (55); Damage inspections are ongoing (66)

Damage Assessment Map: <http://calfire-forestry.maps.arcgis.com/apps/webappviewer/index.html?id=5306cc8cf38c4252830a38d467d33728&extent=-13547810.5486%2C4824920.1673%2C-13518764.4778%2C4841526.1117%2C102100>

Fatalities / Firefighter Injuries

Fatalities	Firefighter Injuries
56 (75)	3 (75)

Public Health / Healthcare Facilities

Pharmacies	Rx Open - find nearby open pharmacies: https://www.healthcareready.org/rxopen
Healthcare Facilities	The Feather River Hospital sustained significant damage from the fire. (79) Facilities under mandatory evacuation: Adventist Health Feather River; Carenet Pregnancy Center of Paradise; AMPLA Health Magalia Medical Clinic; Live Oak Medical Clinic (22)

Schools, Colleges, & Universities

Butte County: K-12 Schools	<p>School Closures:</p> <ul style="list-style-type: none"> Butte County Superintendent of Schools has closed all schools, including charter schools, through Friday, November 23. (54) <p>School Facilities Reportedly Destroyed:</p> <ul style="list-style-type: none"> Paradise High School, 5911 Maxwell Dr, Paradise (34) Paradise Unified School District Office, 6696 Clark Rd, Paradise (34) Paradise Elementary, 588 Pearson Rd, Paradise (65) Achieve Charter High School, 771 Elliott Rd, Paradise (65)
----------------------------	--

Community Infrastructure Impacts (continued)

Lake County: K-12 Schools	<p>Preschools will follow the lead of their host school. If the host school is closed, the Lake County Office of Education Preschool will close. (66)</p> <p>The following school districts will be closed for the remainder of the week due to poor air quality:</p> <ul style="list-style-type: none"> • Konocti Unified School District (67,70) • Kelseyville Unified School District (68,70) • Middletown Unified School District (70) • Lakeport Unified School District (70)
Mendocino County: K-12 Schools	<p>School districts will look at air quality readings at 5:00am to determine closures for the day. (72)</p>
Sonoma County: K-12 Schools	<p>School districts will look at air quality readings at 5:00am to determine closures for the day. (71)</p> <p>Sonoma County Office of Education School Closures Updates: https://www.scoe.org/cs/blank/print/htdocs/storm-update.html</p>
Universities & Colleges	<p>Chico State University is closed until Monday, November 26 (54)</p> <p>Butte Community College closed through November 25 (65)</p> <p>Sacramento State - closed Thursday, Nov. 15, 2018 (73)</p> <p>UC Davis closed Thursday, November 15 due to air quality (73)</p> <ul style="list-style-type: none"> • The UC Davis hospitals, primary care clinics, Veterinary Medical Teaching Hospital and Student Health and Wellness Center will remain open. (73)

Mail & Package Delivery

US Post Office	Closure	Alternate Pick-Up Location
	Magalia, 14146 Skyway, CA 95954-9998 (81)	Chico Midtown 141 W 5th Street, CA 95928 (81)
	Stirling City, 16939 Skyway, CA 95978-9998 (81)	Chico Midtown 141 W 5th Street, CA 95928 (81)
	Paradise, 6469 Clark Rd., CA 95969-9998 (81)	Chico Midtown 141 W 5th Street, CA 95928 (81)
	Forest Ranch, 15517 Nopel Ave, CA 95942-9998 (81)	Chico Midtown 141 W 5th Street, CA 95928 (81)
	Berry Creek, 5 Whispering Chapel Ln, CA 95916 (81)	Oroville, 1735 Robinson Street, CA 95965 (81)
UPS	UPS deliveries in the following zip codes are impacted due to the fire: 95942,95954,95960, 95965, 95969 (12)	

Transportation Infrastructure Impacts

Sources reference number (#) corresponds to number in Information sources section.

Highway & State Road Closures

Highway 32	Closed from Yosemite Dr in Chico to Nopel Rd in Forest Ranch, Butte County (32) Current Conditions for Hwy 32: http://www.dot.ca.gov/cgi-bin/roads.cgi?roadnumber=32&submit=Search
Highway 70	Closed to eastbound traffic from the junction of SR 191 to 4.6 lies east of the junction of SR 191 at Pentz Rd in Butte County (83) Closed to eastbound traffic at the junction of SR 149 in Butte County (83) Closed from 4.6 miles east of the junctions of SR 191 at Pentz Rd in Butte County to the north junction of SR 89 at Greenville Wye in Plumas County (83) Current Conditions for Hwy 70: http://www.dot.ca.gov/cgi-bin/roads.cgi?roadnumber=70&submit=Search
Highway 99	No wildfire related closures listed (59) Current Conditions for Hwy 99: http://www.dot.ca.gov/cgi-bin/roads.cgi?roadnumber=99&submit=Search
Highway 149	No restrictions listed on Cal Trans site (85) Current Conditions for Hwy 149: http://www.dot.ca.gov/cgi-bin/roads.cgi?roadnumber=149&submit=Search
Highway 162	Closed to eastbound traffic 6.1 miles east of Oroville at Forbestown Rd in Butte County (86) Current Conditions for Hwy 162: http://www.dot.ca.gov/cgi-bin/roads.cgi?roadnumber=162&submit=Search
Highway 191	Closed at the junction of SR 70 in Butte County (87) CalTrans has started guardrail repairs on SR-191. Expected completion by Nov 17 (65) Current Conditions for Hwy 191: http://www.dot.ca.gov/cgi-bin/roads.cgi?roadnumber=191&submit=Search
Maps	Cal Trans Quick Maps: http://quickmap.dot.ca.gov

Local Roads

Local Roads Closures	Neal Rd. eastbound from SR-99 (56) Durham-Pence Rd. eastbound from SR-99 (56) Skyway at Honey Run @ Paradise (56) Skyway at Humboldt (56) Skyway at De Sable Ln (56) Cherokee at Water Service Dirt Road (56) Humboldt Rd at Bruce Rd (56) East 20th at Dawncrest Drive (56) Doe Mill Rd at Butte Creek Forks Recreation Area (56)
----------------------	--

Rail Closures

AMTRACK	No service disruptions listed (64)
Union Pacific & BNSF	Threats to the Union Pacific Railroad (79) BNSF rerouting trains around the wildfires as conditions permit. (52)

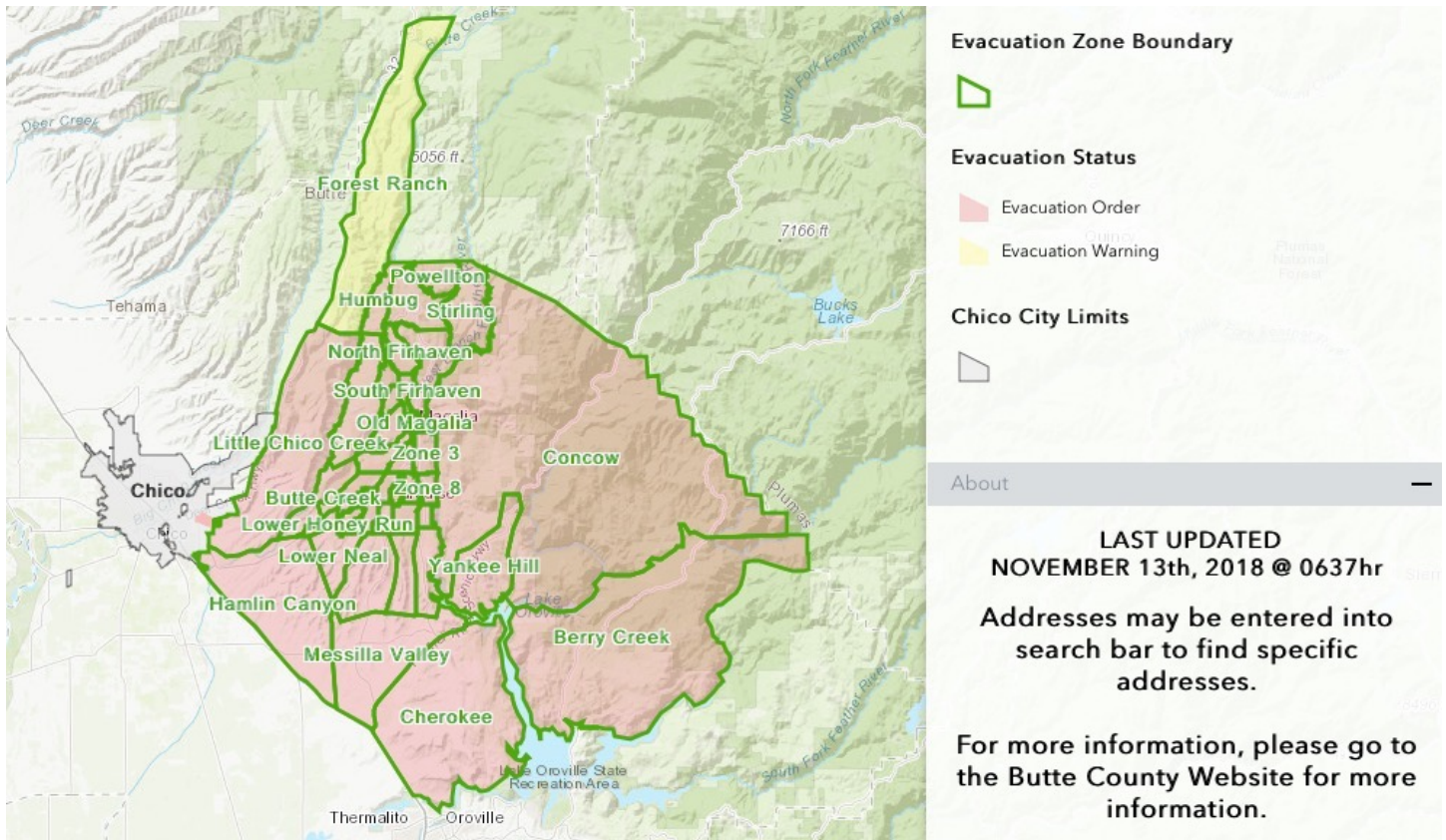
Evacuations

Sources reference number (#) corresponds to number in Information sources section.

<p>Mandatory Evacuations</p>	<ul style="list-style-type: none"> • Established for Paradise, Magalia, Concow, Butte Creek Canyon, and Butte Valley (75) • Powellton zone (75) • Lovelock zone (75) • Humbug zone (75) • Stirling zone (75) • North coutelenc zone (75) • North fir haven zone (75) • Nimshew zone (75) • Carnegie/colter zone (75) • South firhaven zone (75) • South coutelenc zone (75) • North pines zone (75) • South pines zone (75) • Old Magalia zone (75) • Lower pentz zone (75) • Morgan ridge zone (75) • Lower Clark zone (75) • Butte creek road (75) • Centerville road (75) • Concow (75) • Pulga (75) • Yankee Hill (75) 	<ul style="list-style-type: none"> • Skyway from lower paradise to the Chico city limits (75) • Morgan ridge (75) • Highway 70 from Pulga to West branch feather river bridge (75) • All of Clark Road and all of pentz road, south to highway 70, everything west to highway 99 and south to highway 149 including all of butte valley (75) • Shippee Road from Highway 149 to Highway 99 (75) • Cherokee Road to Highway 70 to Lake Oroville south to Table Mountain Blvd (75) • Highway 32 at nopel south all the way to Chico city limits (75) • East Bound Hwy 162/Oro Quincy Hwy at Forbestown Rd east to Mountain House Road/4 Mile Ridge Road, including the communities of Berry Creek, Brush Creek, Mountain House and Bloomer Hill. (75)
<p>Interactive Evacuation Map: http://nifc.maps.arcgis.com/apps/webappviewer/index.html?id=41fe4499192a4e008a1d0c69a96d6284</p>		
<p>Evacuation Warnings</p>	<ul style="list-style-type: none"> • Hwy 32 at Nopel Ave. east on Hwy 32 to the Plumas County Line. (75) 	
<p>Additional Info</p>	<p>Butte County Community Evacuation Information: http://www.buttecounty.net/oem/disasterpreparedness</p> <ul style="list-style-type: none"> • Evacuation Plans and Maps for the following communities: Berry Creek, Butte Creek/Butte valley, Cohasset/Richardson Springs, Forbestown/Robinson Mill/Clipper Mills, Hurlerton/Feather Falls, Forest Ranch/Butte Meadows, Paradise/Upper Ridge, Yankee Hill, East Oroville & Cherokee, Palermo & Bangor 	

Evacuations (continued)

Evacuation Map



Source: <http://nifc.maps.arcgis.com/apps/webappviewer/index.html?id=41fe4499192a4e008a1d0c69a96d6284>

Evacuation Centers / Shelters

Sources reference number (#) corresponds to number in Information sources section.

Shelters

City	Shelter	Occupancy/ Capacity
Chester	Veterans Memorial Hall, 225 Gay Street -	CLOSED (33)
Chico	Neighborhood Church, 2801 Notre Dame Blvd - ARC (66)	148/250 (66)
Chico	Chico Elks Lodge, 1705 Manzanita Ave -	CLOSED (37)
Chico	Pleasant Valley Baptist Church, 13539 Garner Lane - CS (66)	128/350 (66)
Chico	Bidwell Jr. High School, 2376 North Ave - ARC (66)	49/166 (66)
Chico	Azads Martial Arts, 313 Walnut Street Ste 150 - IS (66)	36/40 (66)
Chico	East Avenue Church, 1184 East Ave. - IS (66)	190 (66)
Gridley	Butte County Fairgrounds, 199 E Hazel Street - ARC (66)	241/500 (66)
Orland	Glenn County Fairgrounds, 221 E Yolo St - CS (66)	55/250 (66)
Oroville	Church of the Nazarene, 2238 Monte Vista Ave - ARC (66) • Demobilizing November 17, developing transition plan (66)	166/300 (66)
Oroville	New Life Church, 965 Grand Avenue - IS (66)	25/45 (66)
Quincy	Plumas County Fairgrounds, 204 Fairgrounds Rd - ARC (66)	CLOSED (66)
Yuba City	Sutter Yuba Fairgrounds, 442 Franklin Ave., Yuba City - CS (66)	127/380 (66)

ARC = American Red Cross Shelter; CS = County Run Shelter; IS = Independent Shelter

Animal Shelters

City	Shelter	Type	# of animals
Chico	Del Oro Old County Hospital 2279 Del Ord Drive (65)	Small (65)	606 (65) Full (65)
Chico	Chico Airport, 150 Airpark Blvd (65)	Small (65)	507 (65)
Gridley	Butte County Fairgrounds, 199 E Hazel St (65)	Large (65)	483 (65)
Orland	Glenn County Fair Grounds, 221 E Yolo St (65)	Small/Large (65)	30 (65) Full (65)
Oroville	2800 Richter St (63)	Small (63)	
Quincy	Plumas Sierra County Fair, 204 Fairground Rd (65)	-	CLOSED (65)
Yuba City	Yuba Sutter Fair, 442 Franklin Ave (65)	Small/Large (65)	51 (65)
Yuba City	Sheriff's Posse Arena, 52 2nd St (65)	Large (65)	Not reported

Humanitarian Response Information

Sources reference number (#) corresponds to number in Information sources section.

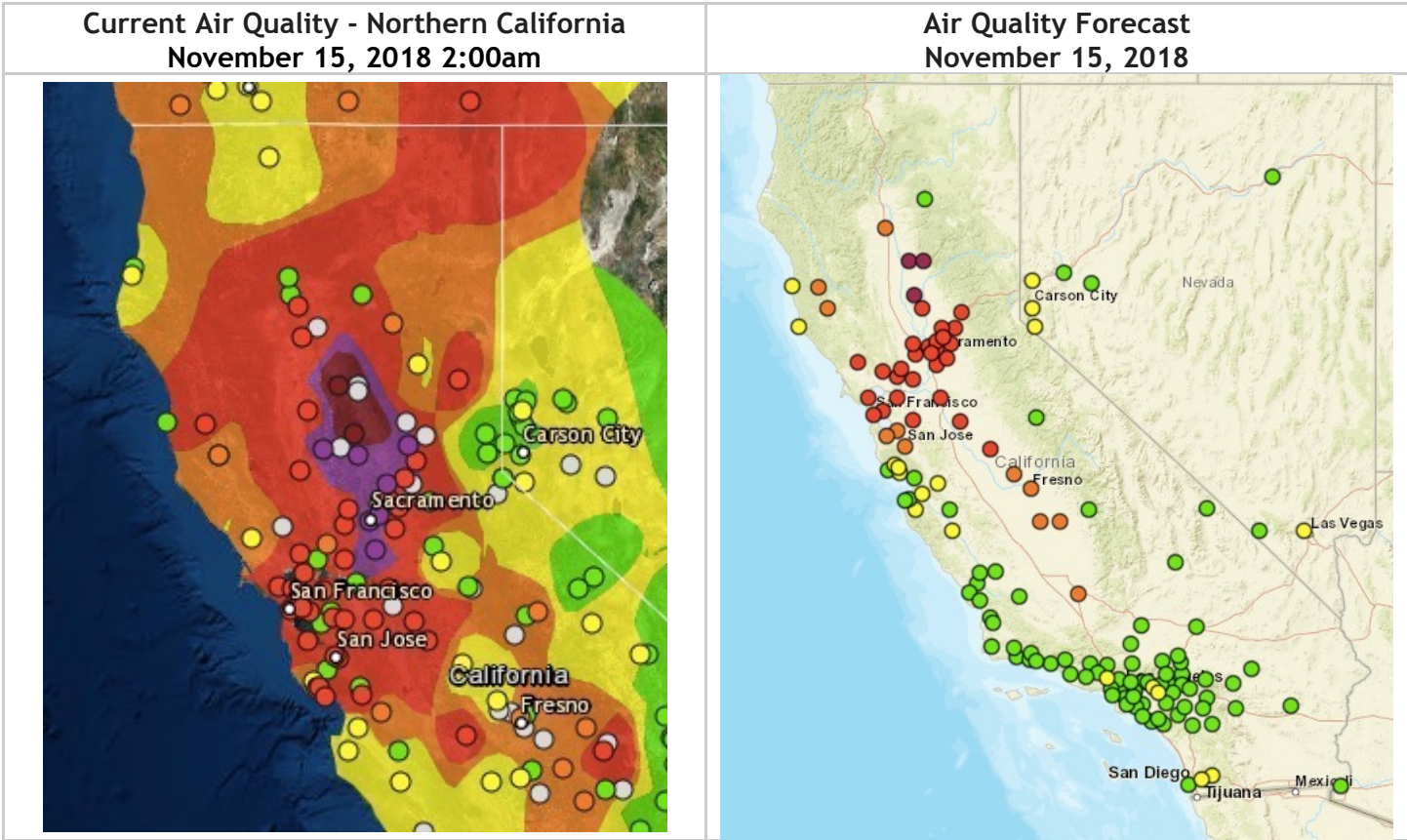
<p>Missing People & Check-Ins</p>	<p>Red Cross Safe & Well: https://safeandwell.communityos.org/cms/index.php Butte County Sheriff's Office Missing Persons Call Center - staffed 8am to 8pm: (530) 538 - 6570, (530) 538 - 7544, (530) 538 - 7671 (36,38) Missing Persons List: http://www.buttecounty.net/Portals/24/pdf/CampFireMissingPersons.pdf?ver=2018-11-14-082238-507 (note there are reports that this is only a partial list)</p>
<p>Lost & Found for Pets</p>	<p>Contact North Valley Animal Disaster Group at 530.895.0000 to report lost pets. (66) VCA Valley Oak Veterinary Center Facebook: https://www.facebook.com/ValleyOakVeterinaryCenter/</p>
<p>N95 Mask Distribution</p>	<p>Sacramento area:</p> <ul style="list-style-type: none"> • all City of Sacramento fire stations, except Station 16 which is closed (39) <p>Butte County</p> <ul style="list-style-type: none"> • Beginning Tuesday, November 13 - Oroville Municipal Auditorium, 1200 Myers Street, Oroville (39) <p>CDPH - Use of Particulate Respirators (Masks) to Protect from Wildfire Smoke or Ash: https://www.cdph.ca.gov/Documents/Use%20of%20Particulate%20Respirators%20(Masks)%20to%20Protect%20from%20Wildfire%20Smoke%20or%20Ash.pdf</p>
<p>Temporary Housing</p>	<p>AirBnB Open Homes: https://www.airbnb.com/welcome/evacuees/buttecounty</p>
<p>Volunteering</p>	<p>Caring Choices - Emergency Volunteer Center is accepting applications for interested volunteers: http://www.caring-choices.org/ (32) California Volunteers Camp Fire Incidents Page: https://californiavolunteers.ca.gov/camp-fire/</p>
<p>Donations - Financial</p>	<p><i>Please do not self-deploy.</i> North Valley Community Foundation - https://www.nvcf.org/fund/camp-fire-evacuation-relief-fund/ (5) California Volunteers Camp Fire Incidents Page: https://californiavolunteers.ca.gov/camp-fire/</p>
<p>Donations - Goods</p>	<p><i>Please do not send in-kind donations without first coordinating with the receiving agency. Unsolicited in-kind donations strain the system.</i> Cal OES Business Operations Center - coordinating larger donations and support from the private sector: businessOP@caloes.ca.gov</p>
<p>Distribution Centers</p>	<p>Collection and Distribution Centers For In-Kind Donations</p> <ul style="list-style-type: none"> • Oroville Municipal Auditorium, 1200 Myers Street, Oroville, CA 95965; Customer Hours: 9:00am-7:00pm (74) • Salvation Army Collection and Distribution Center; 1100 Miraudar Street; Chico, CA 95973; Customer Hours: 10:00am-6:00pm (74) <p>These locations are where donated goods can be dropped off, as well as the location where survivors can pick up any needed donated supplies. Only new items will be accepted. (74)</p>

Humanitarian Response Information (continued)

<p>Coping with Disaster Resources</p>	<p>US Department Health & Human Services: Tips for Survivors of a Traumatic Event Managing Your Stress: https://store.samhsa.gov/shin/content//NMH05-0209R/NMH05-0209R.pdf</p> <p>National Institute of Mental Health: Coping with Traumatic Events: https://www.nimh.nih.gov/health/topics/coping-with-traumatic-events/index.shtml</p> <p>FEMA - Coping with Disaster: https://www.fema.gov/coping-disaster</p>
<p>Coping with Disaster Resources - Supporting Children</p>	<p>Parent Guidelines for Helping Children Impacted by Wildfires: https://www.nctsn.org/sites/default/files/resources//parents_guidelines_for_helping_children_impacted_by_wildfires.pdf</p> <p>Parent Guidelines for Helping Children Impacted by Wildfires - English: https://www.nctsn.org/what-is-child-trauma/trauma-types/disasters/wildfire-resources</p> <p>Parent Guidelines for Helping Children Impacted by Wildfires - Spanish: https://www.nctsn.org/resources/guia-para-padres-con-hijos-que-han-sido-afectados-por-incendios</p> <p>Ready.gov Helping Children Cope: https://www.ready.gov/kids/parents/coping</p>
<p>Mental Health Support</p>	<p>Substance Abuse and Mental Health Services Administration Disaster Distress Helpline - Call 1-800-985-5990 or text TalkWithUs to 66746 to connect with a trained crisis counselor. Website: https://www.samhsa.gov/find-help/disaster-distress-helpline</p>

Air Quality

Sources reference number (#) corresponds to number in Information sources section.



Source: <https://gispub.epa.gov/airnow/>

<p>Air Quality Websites</p>	<p>Due to the volume of people checking on air quality, some sites may be experiencing difficulties, so several options are listed:</p> <p>EPA Air Now: https://airnow.gov or https://gispub.epa.gov/airnow/</p> <p>Air Now EnviroFlash: http://www.enviroflash.info</p> <p>US Forest Service: https://monitoring.airfire.org/monitoring/v4#!/?category=PM2.5_nowcast&centerlat=38.9765&centerlon=-121.6406&zoom=7</p> <p>California Air Resources Board: https://www.arb.ca.gov/aqmis2/map_pages/gmap.php</p>
<p>Guides</p>	<p>Tips for choosing indoor air cleaner for effective indoor smoke removal in California: https://ww2.arb.ca.gov/news/tips-choosing-indoor-air-cleaner-effective-indoor-smoke-removal-california</p> <p>CA Department of Industrial Relations - Protecting Workers Exposed to Smoke from Wildfires: https://www.dir.ca.gov/dosh/wildfire/Worker-Protection-from-Wildfire-Smoke.html</p> <p>Protecting Children from Wildfire Smoke and Ash: https://www3.epa.gov/airnow/smoke_fires/protecting-children-from-wildfire-smoke-and-ash.pdf</p> <p>Wildfire Smoke - A Guide for Public Health Officials: https://www3.epa.gov/airnow/wildfire_may2016.pdf</p>

Local Assistance Centers & Recovery Assistance

Sources reference number (#) corresponds to number in Information sources section.

Recovery Websites

Cal OES	Cal OES Statewide Wildfire Recovery Resources: http://wildfirerecovery.org/current-incidents/november-2018-fires/
---------	--

Recovery Assistance

Disaster Recovery Center	Butte County Disaster Recovery Center will open on 11/16/2018 at Chico Mall - Sears, 1982 E 20th Street, Chico, CA 95928. Hours of operation are to be determined. (65)
Federal Disaster Assistance	FEMA trailer for people to register for FEMA Assistance located at Walmart parking lot, 465 Cal Oak Rd, Oroville, CA 95965, 0900-1730 hours (66) Residents and business owners who sustained losses can begin applying for FEMA aid now. Register online at https://www.disasterassistance.gov or call 800-621-3362 / 800-462-7585 TTY. The toll-free numbers will operate from 4 a.m.-7 p.m. PST, 7 days a week.
Guides	Guide to Disaster Assistance Services for Californians: http://wildfirerecovery.org/wp-content/uploads/2017/10/DisasterAssistanceGuideforCaliforniansFinal.pdf
Replacing Vital Records	USA.gov Replacing Your Vital Records: https://www.usa.gov/replace-vital-documents

Temporary Housing

Displaced Students	Educational Rights of Children and Youth Displaced by Disasters: https://nche.ed.gov/downloads/briefs/csds_admin.pdf
USPS Change of Address	USPS Change of Address Information: https://www.disasterassistance.gov/get-assistance/forms-of-assistance/4725/1/913

Employer / Employee Resources

Recovery Guides	Red Cross - Picking Up the Pieces after a Disaster: http://www.redcross.org/images/MEDIA_CustomProductCatalog/m7540319_picking-up-the-pieces-A5076.pdf
Unemployment Assistance	California Employment Development Department (EDD), provides temporary unemployment benefits to people whose jobs or work hours were directly impacted by the fires. https://www.edd.ca.gov/about_edd/disaster_related_services.htm Disaster Unemployment Assistance: https://www.edd.ca.gov/unemployment/Disaster_Unemployment_Assistance.htm
Temporary Workspaces	Chico Start is offering office space for businesses displaced by the fire needing a temporary space to work. Chico Start has phones, WiFi, desks, phone booths, in the co-working space. To make arrangements, Contact Tim at tim@chicostart.com or 530.924.5070. (5)

Local Assistance Centers & Recovery Assist (continued)

Insurance & Taxes

Guides	<p>California Department of Insurance - Wildfire Resources Website: http://www.insurance.ca.gov/01-consumers/140-catastrophes/WildfireResources.cfm</p> <p>California Department of Insurance - Resources to Help Recent Wildfire Victims: https://www.insurance.ca.gov/01-consumers/140-catastrophes/WildfireResources.cfm</p> <p>Residential Property Claims Guide: http://www.insurance.ca.gov/01-consumers/105-type/95-guides/03-res/res-prop-claim.cfm#whattodo</p> <p>California Franchise Tax Board - Disaster Loss: https://www.ftb.ca.gov/individuals/disaster.shtml</p> <p>Disaster Assistance and Emergency Relief for Individuals and Businesses: https://www.irs.gov/businesses/small-businesses-self-employed/disaster-assistance-and-emergency-relief-for-individuals-and-businesses-1</p>
--------	---

Damage Assessment, Debris Removal, & Clean-Up

Sources reference number (#) corresponds to number in Information sources section.

Clean-Up & Ash Removal

General Guides	<p>Camp Fire - Returning to Your Home/Property: http://www.buttecounty.net/Portals/0/PublicInformation/ADMIN/Camp%20Fire_Returning%20Home.pdf?ver=2018-11-14-104934-697</p> <p>EPA - Dealing with Debris and Damaged Buildings: https://www.epa.gov/natural-disasters/dealing-debris-and-damaged-buildings</p> <p>Cal EPA - Fact Sheet: Protecting Public Health from Home and Building Fire Ash: http://calepa.ca.gov/wp-content/uploads/sites/34/2016/10/Disaster-Documents-FireAsh.pdf</p> <p>Department of Toxic Substances Control - Handling Ash, Debris and other Hazardous Materials from Burned Structures: http://www.dtsc.ca.gov/HazardousWaste/upload/Fire_Emergency_Guidance_FS_1.pdf</p> <p>Safe Cleanup of Fire Ash: https://www.arb.ca.gov/carpa/toolkit/emerg-response/safe-cleanup-fire-ash.pdf</p>
Guides - Employee Safety / Employer Responsibilities	<p>CA Department of Industrial Relations - Worker Safety and Health During Fire Cleanup: https://www.dir.ca.gov/dosh/wildfire/Worker-Health-and-Safety-During-Fire-Cleanup.html</p> <p>CA Department of Industrial Relations - Respiratory Protection During Fire Cleanup: https://www.dir.ca.gov/dosh/Fire_Resp_Protection.html</p> <p>CA Department of Industrial Relations - Personal Protective Equipment During Fire Cleanup: https://www.dir.ca.gov/dosh/wildfire/Protective-Equipment-During-Fire-Cleanup.html</p>
Debris Removal Program Info	<p>State/Federal Wildfire Debris Removal Program Eligibility Chart: https://www.co.shasta.ca.us/docs/libraries/resource-management-docs/ehd-docs/State-Federal-Wildfire-Debris-Removal-Program.pdf</p> <p>California Wildfires Household Hazardous Waste and Consolidated Debris Removal Programs Fact Sheet: https://www.co.shasta.ca.us/docs/libraries/resource-management-docs/ehd-docs/fact-sheet-hhw-and-debris-removal.pdf</p>

Emergency Operations Center (EOC) Activations

Sources reference number (#) corresponds to number in Information sources section.

Emergency Operations Center	Activation Level	Source
Cal OES State Operations Center	Level 1 - highest level	(66)
Cal OES Inland Region EOC	Level 2, Operational period 0700-1900 hours	(66)
Cal OES Business Operations Center	Operational period 0700-1900 hours	(53)
Butte County EOC	Level 3 - highest level	(66)
Yuba County EOC	Level 3 - lowest level	(66)
Glenn County EOC	Level 2 in support of shelter operations	(66)
Sutter County EOC	Level 3 - lowest level	(66)
Plumas County EOC	Deactivating	(66)
Sacramento County EOC	Level 3 - lowest level, in support of Mass Fatality services	(66)
Medical and Health Coordination Center	Level 3 - lowest level	(66)
Caltrans District 3	Level 2	(66)

Proclamations & Declarations

Sources reference number (#) corresponds to number in Information sources section.

Local Emergency Proclamations	<p>Butte County - local emergency proclamation - November 8 (65)</p> <p>Butte County - local health emergency declared - November 13 (65)</p> <p>Glenn County - local emergency proclamation - November 9 (65)</p> <p>Plumas County - local emergency proclamation - November 12 (65)</p>
State Emergency Proclamations	State Emergency Proclamation for Butte County - November 8 (6)
Federal Declarations	<p>Federal Emergency Declaration received - November 9 (65)</p> <p>Presidential Major Disaster Declaration received - November 12 (65)</p>
Fire Management Assistance Grants (FMAGs)	FMAG was approved by FEMA - November 8 (33)

Downloadable Map Files

File	Link	Download Guide #	File Types
------	------	------------------	------------

Air Quality Index (AQI)	https://airnow.gov/index.cfm?action=google_earth.index	A	KML Only
Cal Fire Statewide Fire Map	https://www.google.com/maps/d/viewer?mid=1TOEFA857tOVxtewW1DH6neG1Sm0&hl=en	B	KML & KMZ
NASA Active Fire Data Maps	https://firms.modaps.eosdis.nasa.gov/active_fire/#firms-shapefile	C	Shape files, KML, & CSV

Download Instructions

Guide #	Instructions
A	Step 1 under Instructions for Google Earth has the “click here” download link
B	<ol style="list-style-type: none"> 1) click on the three dots in the red header bar for the more options dropdown menu 2) select “Download KML” 3) Select whether you want a KML or KZM File
C	<ol style="list-style-type: none"> 1) Select Shapefiles, Google Earth KML, or Text (CSV) 2) Select desired timeframe under”USA (Conterminous) and Hawaii”

Guide for Overlaying Zip Code Data in Google Earth

After opening KML or KZM file in Google Earth activate the Postal Code Boundary layer to see the zip codes. Postal Code Boundary layer is located in Google Earth under Layers -> More -> US Government -> Postal Code Boundary. Tip: to make it easier to see the zip code boundaries, turn off the roads layer.

Additional Information Resources

Butte County	Main Website: http://www.buttecounty.net Facebook: https://www.facebook.com/ButteCounty/ Twitter: https://twitter.com/CountyofButte Sheriff Twitter: https://twitter.com/ButteSheriff Sheriff Facebook: https://www.facebook.com/bcsonews/ Code Red Emergency Alerts Signup: https://public.coderedweb.com/CNE/en-US/BFA19C579EA5
Chico	Police Department Facebook: https://www.facebook.com/ChicoPoliceDepartment/ Police Department Twitter: https://twitter.com/ChicoPolice Fire Department Twitter: https://twitter.com/ChicoFD Code Red Emergency Alerts Signup: https://public.coderedweb.com/CNE/en-US/BFA19C579EA5
Paradise	Town of Paradise Facebook: https://www.facebook.com/townofparadise/

Additional Information Resources (continued)

Cal Fire	<p>Cal Fire Incident Page - Camp Fire: http://www.fire.ca.gov/current_incidents/incidentdetails/Index/2277</p> <p>CAL FIRE Butte Unit Twitter: https://twitter.com/CALFIRE_ButteCo</p> <p>Cal Fire Butte Unit Facebook: https://www.facebook.com/CALFIREButteCo</p> <p>Press conference information is being posted here.</p> <p>Cal Fire Incident Updates Email Signup: http://tinyurl.com/2018campfire (constant contact sign-up form)</p> <p>Nov 11 6pm Press Conference: https://www.facebook.com/CALFIREButteCo/videos/5534019033287777/</p>
Maps	<p>California Hourly Fire Danger Map: https://cefa.dri.edu/HourlyFD/animate/</p> <p>Smoke Plume Map: https://www.ospo.noaa.gov/Products/land/hms.html</p> <p>Google Crisis Map: https://google.org/crisismap/google.com/2018-camp-fire</p> <p>Cal OES Fire Situation Awareness Map: https://calema.maps.arcgis.com/apps/MapSeries/index.html?appid=33c284a58166427bab05a115414930ed</p>
Weather	<p>NWS Watches, Warnings or Advisories for Butte (CAC007) California: https://alerts.weather.gov/cap/wwaatmget.php?x=CAC007&y=1</p>

Information Sources

Note: Due to the number of fires and rapid nature with which information is coming out the Information Sources section is not being cleaned/scrubbed of sources no longer referenced above. This means that there may be sources listed below that no longer support information listed above. Not cleaning this list, helps prevent accidental errors in source citations.

Updated: date/time = source was date/time stamped for when it was posted or last updated

Viewed: date/time = source has not date or time stamp and the information listed is when information was pulled from the site.

- 1) Cal Fire Incident Page - Camp Fire: http://www.fire.ca.gov/current_incidents/incidentdetails/Index/2277 (Updated: November 10, 2018 9:39 am)
- 2) National Interagency Coordination Center Incident Management Situation Report Friday, November 9, 2018 - 0800 MT
- 3) Northern California Geographical Area Coordination Center - Short Briefing 209 Summary Report - Camp Fire (Updated: November 10, 2018 5:58am)
- 4) Cal OES Business Operations Center November 9, 2018 morning report
- 5) Butte County Homepage: <http://www.buttecounty.net> (Updated: November 10, 2018 7:00am)
- 6) CalOES News - Acting Governor Newsom Declares State of Emergency in Butte County Due to Camp Fire: <http://www.oesnews.com/acting-governor-newsom-declares-state-of-emergency-in-butte-county-due-to-camp-fire/> (Updated: November 8, 2018)
- 7) Butte County - County Declares State of Local Emergency: <http://www.buttecounty.net/News-Announcements/CategoryID/4/userid/-1/ArtMID/3464/ArticleID/1129/County-Declares-State-of-Local-Emergency> (Updated: November 9, 2018)
- 8) Butte County of Education Homepage: <https://www.bcoe.org> (Viewed: November 10, 2018 1:47pm)
- 9) Glen County OES Twitter: <https://twitter.com/GlennCountyOES/status/1060784949249236993> (Posted: November 8, 2018 10:43pm)
- 10) Butte County Twitter Post: <https://twitter.com/CountyofButte/status/1060931522872504320> (Posted: November 9, 2018 8:26am)
- 11) USPS Service disruption alerts: <http://about.usps.com/news/service-alerts/business-weather-updates.htm> (Updated: November 9, 2018 8:00p ET)
- 12) UPS Service Alerts: <https://www.ups.com/us/en/service-alerts.page> (Updated: November 9, 2018 9:41am)
- 13) Cal Fire Incident Update - Camp Fire: http://cdfdata.fire.ca.gov/pub/cdf/images/incidentfile2277_4158.pdf (Updated: November 9, 2018 10:00am)
- 14) Cal OES Daily Situation Report - November 9, 2018

- 15) PG&E Camp Fire Emergency Response: https://www.pge.com/en_US/safety/emergency-preparedness/natural-disaster/wildfires/wildfire-emergency-response.page?WT.pgeac=Alerts_Wildfires-Camp_EmergencyResponse (Updated: November 9, 2018 5:30am)
- 16) Cal Trans Highway Conditions - Hwy 32: <http://www.dot.ca.gov/cgi-bin/roads.cgi?roadnumber=32&submit=Search> (Viewed: November 10, 2018 2:04pm)
- 17) Cal Trans Highway Conditions - Hwy 70: <http://www.dot.ca.gov/cgi-bin/roads.cgi?roadnumber=70&submit=Search> (Viewed: November 10, 2018 2:04pm)
- 18) Cal Trans Highway Conditions - Hwy 99: <http://www.dot.ca.gov/cgi-bin/roads.cgi?roadnumber=99&submit=Search> (Viewed: November 10, 2018 2:04pm)
- 19) Cal Trans Highway Conditions - Hwy 149: <http://www.dot.ca.gov/cgi-bin/roads.cgi?roadnumber=149&submit=Search> (Viewed: November 10, 2018 2:04pm)
- 20) Cal Trans Highway Conditions - Hwy 191: <http://www.dot.ca.gov/cgi-bin/roads.cgi?roadnumber=191&submit=Search> (Viewed: November 10, 2018 2:04pm)
- 21) Adventist Health Feather River Homepage: <https://www.adventisthealth.org/feather-river/pages/default.aspx> (Viewed: November 8, 2018 8:24pm)
- 22) Cal OES Business Operations Center November 8, 2018 evening report
- 23) Butte County Sheriff Twitter Feed Post: <https://twitter.com/CountyofButte/status/1060630197274210304> (Updated: November 8, 2018 12:28pm)
- 24) Cal Fire Incident Update - Camp Fire: http://cdfdata.fire.ca.gov/admin8327985/cdf/images/incidentfile2277_4163.pdf (Updated: November 10, 2018 7:00am)
- 25) FEMA Daily Operations Brief - November 10, 2018: https://content.govdelivery.com/attachments/USDHSFEMA/2018/11/10/file_attachments/1105454/FEMA%20Daily%20Ops%20Briefing%2011-10-2018.pdf
- 26) Cal OES Business Operations Center November 10, 2018 morning report
- 27) Sonoma County Office of Education - School Closures: <https://www.scoe.org/cs/blank/print/htdocs/storm-update.html> (Viewed: November 10, 2018 1:27pm)
- 28) Butte County Sheriff's Twitter Post: <https://twitter.com/ButteSheriff/status/1061348815200911360> (Posted: November 10, 2018 12:04pm)
- 29) American Red Cross Shelter List: https://maps.redcross.org/website/maps/ARC_Shelters.html (Viewed: November 10, 2018 1:54pm)
- 30) PG&E Camp Fire Emergency Response: https://www.pge.com/en_US/safety/emergency-preparedness/natural-disaster/wildfires/wildfire-emergency-response.page?WT.pgeac=Alerts_Wildfires-Camp_EmergencyResponse (Viewed: November 10, 2018 2:02pm)
- 31) Cal OES Daily Situation Report - November 10, 2018
- 32) California Volunteers - Camp Fire: <https://californiavolunteers.ca.gov/camp-fire/> (Viewed: November 11, 2018 4:38pm)
- 33) Cal OES Daily Situation Report - November 11, 2018
- 34) Cal OES Business Operations Center - November 11, 2018 evening report
- 35) Glenn County Office of Education: <http://www.glenncoe.org> (Viewed: November 11, 2018 8:21pm)
- 36) California Wildfire Statewide Recovery Resources - November 2018 Wildfires Local Contacts: <http://wildfirerecovery.org/current-incidents/november-2018-fires/> (Viewed: November 11, 2018 9:02pm)
- 37) Butte County Twitter Post: <https://twitter.com/CountyofButte/status/1061783836894224384> (Posted: November 11, 2018 4:52pm)
- 38) Butte County Sheriff's Office Twitter Post: <https://twitter.com/ButteSheriff/status/1061742673659256833> (Posted: November 11, 2018 2:09pm)
- 39) Cal OES New Statement - Breathe Easy with an N95 Particulate Mask During Smokey Days: <http://www.oesnews.com/breathe-easy-with-an-n95-particulate-mask-during-smokey-days/> (Updated: November 11, 2018)
- 40) Cal Fire Incident Updates Page - Camp Fire: http://cdfdata.fire.ca.gov/admin8327985/cdf/images/incidentfile2277_4190.pdf (Updated: November 11, 2018 7:00pm)
- 41) Northern California Geographical Area Coordination Center - Short Briefing 209 Summary Report - Camp Fire (Updated: November 11, 2018 6:22pm)
- 42) PG&E - Camp Fire Emergency Response: https://www.pge.com/en_US/safety/emergency-preparedness/natural-disaster/wildfires/wildfire-emergency-response.page?WT.pgeac=Alerts_Wildfires-Camp_EmergencyResponse (Viewed: November 12, 2018 12:38am)
- 43) USPS - Service disruption alerts: <http://about.usps.com/news/service-alerts/business-weather-updates.htm> (Updated: November 10, 2018 9:00pm ET)
- 44) Northern California Geographical Area Coordination Center - News and Notes - Camp Fire: <https://gacc.nifc.gov/oncc/news.php> (Updated: November 11, 2018 7:30pm)
- 45) Cal Trans Current Conditions for Hwy 32: <http://www.dot.ca.gov/cgi-bin/roads.cgi?roadnumber=32&submit=Search> (Viewed: November 12, 2018 1:17am)
- 46) Cal Trans Current Conditions for Hwy 70: <http://www.dot.ca.gov/cgi-bin/roads.cgi?roadnumber=70&submit=Search> (Viewed: November 12, 2018 1:19am)

- 47) Cal Trans Current Conditions for Hwy 99: <http://www.dot.ca.gov/cgi-bin/roads.cgi?roadnumber=99&submit=Search> (Viewed: November 12, 2018 1:21am)
- 48) Cal Trans Current Conditions for Hwy 149: <http://www.dot.ca.gov/cgi-bin/roads.cgi?roadnumber=149&submit=Search> (Viewed: November 12, 2018 1:22am)
- 49) Cal Trans Current Conditions for Hwy 162: <http://www.dot.ca.gov/cgi-bin/roads.cgi?roadnumber=162&submit=Search> (Viewed: November 12, 2018 1:23am)
- 50) Cal Trans Current Conditions for Hwy 191: <http://www.dot.ca.gov/cgi-bin/roads.cgi?roadnumber=191&submit=Search> (Viewed: November 12, 2018 1:25am)
- 51) Amtrak Service Alerts and Notices: <https://www.amtrak.com/service-alerts-and-notice#> (Viewed: November 12, 2018 1:30am)
- 52) BNSF Service Advisory: <https://domino.bnsf.com/website/updates.nsf/updates-service-industrial/BB750FDEBE8695388625834300123F90?Open> (Updated: November 11, 2018)
- 53) Cal OES Business Operations Center Email - November 8, 2018 12:07pm)
- 54) Cal OES Daily Situation Report - November 12, 2018
- 55) Northern California Geographical Area Coordination Center - Short Briefing 209 Summary Report - Camp Fire (Updated: November 12, 2018 6:05am)
- 56) Cal Fire Incident Update - Camp Fire: http://cdfdata.fire.ca.gov/admin8327985/cdf/images/incidentfile2277_4198.pdf (Updated: November 12, 2018 7:00am)
- 57) Cal Trans Current Conditions for Hwy 32: <http://www.dot.ca.gov/cgi-bin/roads.cgi?roadnumber=32&submit=Search> (Viewed: November 12, 2018 2:25pm)
- 58) Cal Trans Current Conditions for Hwy 70: <http://www.dot.ca.gov/cgi-bin/roads.cgi?roadnumber=70&submit=Search> (Viewed: November 12, 2018 2:25pm)
- 59) Cal Trans Current Conditions for Hwy 99: <http://www.dot.ca.gov/cgi-bin/roads.cgi?roadnumber=99&submit=Search> (Viewed: November 12, 2018 2:25pm)
- 60) Cal Trans Current Conditions for Hwy 149: <http://www.dot.ca.gov/cgi-bin/roads.cgi?roadnumber=149&submit=Search> (Viewed: November 12, 2018 2:25pm)
- 61) Cal Trans Current Conditions for Hwy 162: <http://www.dot.ca.gov/cgi-bin/roads.cgi?roadnumber=162&submit=Search> (Viewed: November 12, 2018 2:25pm)
- 62) Cal Trans Current Conditions for Hwy 191: <http://www.dot.ca.gov/cgi-bin/roads.cgi?roadnumber=191&submit=Search> (Viewed: November 12, 2018 2:25pm)
- 63) Cal OES Business Operations Center - November 12, 2018 morning brief
- 64) Amtrak Service Alerts and Notices: <https://www.amtrak.com/service-alerts-and-notice#> (Viewed: November 12, 2018 4:30pm)
- 65) Cal OES Business Operations Center November 14, 2018 evening report
- 66) Cal OES Daily Situation Report - November 14, 2018
- 67) Konocti Unified School District Facebook Post: <https://www.facebook.com/Konoctiusd> (Posted: November 14, 2018 2:05am)
- 68) Kelseyville Unified School District - News » School Closure: <https://www.kusd.lake.k12.ca.us/District/News/137006-School-Closure.html> (Updated: November 13, 2018)
- 69) Lake County Office of Education - School District Closures 11/14/18: http://www.lake-coe.k12.ca.us/news/details/school_district_closures_11_14_18 (Updated: November 13, 2018)
- 70) Lakeport Unified School District - Air Quality Update for November 14 - 16, 2018: <http://www.lakeport.k12.ca.us/air-quality-update-for-november-14-16-2018/> (Viewed: November 15, 2018 12:36am)
- 71) Sonoma County Office of Education School Closures Updates: <https://www.scoe.org/cs/blank/print/htdocs/storm-update.html> (Viewed: November 15, 2018 12:41am)
- 72) Mendocino County Office of Education Homepage: <http://www.mcoe.us> (Updated: November 14, 2018)
- 73) UC Davis - Campus Closed Thursday, Nov. 15: <https://www.ucdavis.edu/news/campus-closed-thursday-nov-15> (Updated: November 14, 2018)
- 74) Cal Volunteers - Camp Fire: <https://californiavolunteers.ca.gov/camp-fire/> (Viewed: November 15, 2018 1:16am)
- 75) Cal Fire Incident Update - Camp Fire: http://cdfdata.fire.ca.gov/admin8327985/cdf/images/incidentfile2277_4236.pdf (Updated: November 14, 2018 7:00pm)
- 76) Paradise Irrigation District Homepage: <https://pidwater.com> (Updated: November 9, 2018)
- 77) Del Oro Water Company Homepage: <http://www.delorowater.com/deloro/15-announcements/83-paradise-camp-fire-status.html> (Updated: November 11, 2018 3:00pm)
- 78) Gran Mutual Water Company Homepage: <http://www.granmutual.org> (Updated: November 9, 2018)
- 79) Northern California Geographical Area Coordination Center - Short Briefing 209 Summary Report - Camp Fire (Updated: November 14, 2018 6:00pm)
- 80) PG&E - Camp Fire Emergency Response: https://www.pge.com/en_US/safety/emergency-preparedness/natural-disaster/wildfires/wildfire-emergency-response.page?WT.pgeac=Alerts_Wildfires-Camp_EmergencyResponse (Viewed: November 15, 2018 2:24am)
- 81) USPS - Service disruption alerts: <http://about.usps.com/news/service-alerts/business-weather-updates.htm> (Updated:

November 14, 2018 12:30pm ET)

- 82) Cal Trans Current highway Conditions - Hwy 32: <http://www.dot.ca.gov/cgi-bin/roads.cgi?roadnumber=32&submit=Search>
(Viewed: November 15, 2018 2:35am)
- 83) Cal Trans Current highway Conditions - Hwy 70: <http://www.dot.ca.gov/cgi-bin/roads.cgi?roadnumber=70&submit=Search>
(Viewed: November 15, 2018 2:35am)
- 84) Cal Trans Current highway Conditions - Hwy 99: <http://www.dot.ca.gov/cgi-bin/roads.cgi?roadnumber=99&submit=Search>
(Viewed: November 15, 2018 2:35am)
- 85) Cal Trans Current highway Conditions - Hwy 149: <http://www.dot.ca.gov/cgi-bin/roads.cgi?roadnumber=149&submit=Search>
(Viewed: November 15, 2018 2:35am)
- 86) Cal Trans Current highway Conditions - Hwy 162: <http://www.dot.ca.gov/cgi-bin/roads.cgi?roadnumber=162&submit=Search>
(Viewed: November 15, 2018 2:35am)
- 87) Cal Trans Current highway Conditions - Hwy 191: <http://www.dot.ca.gov/cgi-bin/roads.cgi?roadnumber=191&submit=Search>
(Viewed: November 15, 2018 2:35am)

The California Resiliency Alliance is a 501c3 non-profit empowering local and regional resiliency efforts through cross-sector information sharing and partnerships. The content in this brief provided for internal use by California Resiliency Alliance members. Copyright owners retain all copyrights to material referenced.

© California Resiliency Alliance 2018. All Rights Reserved. | CAresiliency.org