

Weekly Wildfire Brief

[Provide Feedback on this Report](#)

Notice: The information in this report is subject to change and may have evolved since the compiling of this report.

BLUE Text = Newly added information and information that has changed since the last wildfire brief.

GRAY Text = Information where nothing new has been posted since the last wildfire brief, unable to reverify the information as still being current.

Inside this Brief:

Summary	Pg 1 - 2	Wildfire Snapshot Pages	Pg 7-36
State Wildfire Map	Pg 3	Downloadable Map Files	Pg 37
Weather Information	Pg 4	Recovery Resources	Pg 38-39
Red Flag Watches & Warnings	Pg 5	Reference Links	Pg 40
Air Quality Maps	Pg 5		
Significant Fire Potential Maps	Pg 6		

(Previous Brief Published 8/16/18)

Wildfire Summary - August 21, 2018

For reference: 1 sq mile = 640 acres ; 1 football field = approx 1.32 acres

Fire	Acres Burned [Change]	% Contained [Change]	Evacuations	Structures Threatened	Structures Destroyed	Page
Del Norte & Siskiyou Counties						
Natchez Fire	20,275 [+3,305]	70% [+13%]	YES	Not listed	None listed	<u>7-8</u>
Humboldt County						
Mill Creek 1 Fire	1,500 [+1,440]	26% [+18%]	YES	150	None	<u>9-10</u>
Kern County						
Call Fire *	370	50%	None listed	5	None	<u>11</u>
Lake, Mendocino, Colusa, & Glenn Counties						
Mendocino Complex	404,532 [+34,238]	74% [-2%]	YES	1,050	277	<u>12-17</u>
Madera County						
Lions Fire	11,606 [+841]	75% [+5%]	None	None	None	<u>18</u>
Mariposa County						
Ferguson Fire (FINAL)	96,901 [+91]	100% [+13%]	None	124	11	<u>19</u>
Modoc County						
Stone Fire	23,221 [+19,721]	12% [+12%]	YES	119	2	<u>20-21</u>
Orange & Riverside Counties						
Holy Fire	22,885 [-101]	91% [+8%]	Lifted	None	24	<u>22</u>
Santa Barbara County						
Front Fire *	900	29%	None	Not listed	None	<u>23</u>

Continued on Next Page

Wildfire Summary (continued)

For reference: 1 sq mile = 640 acres ; 1 football field = approx 1.32 acres

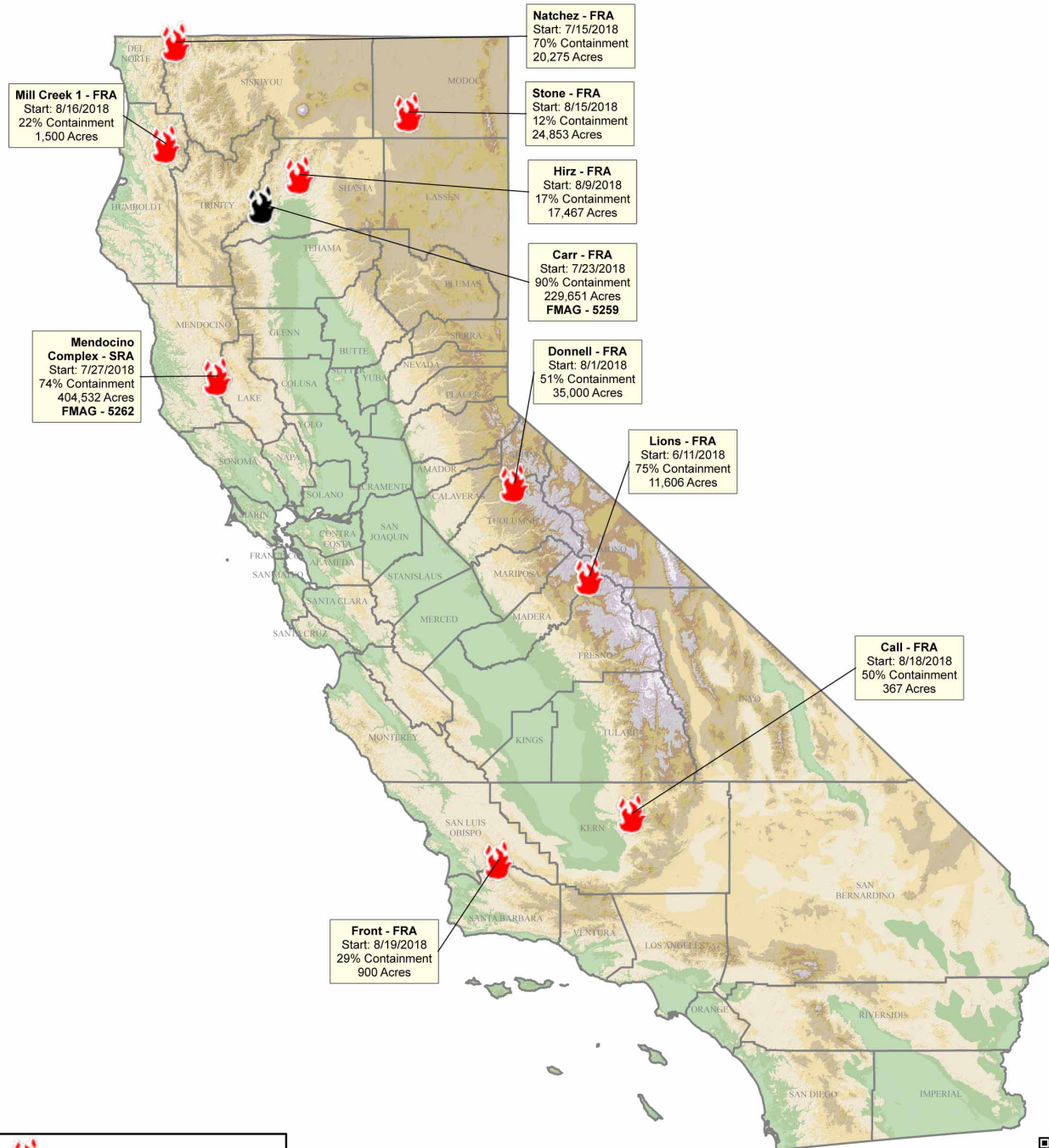
Fire	Acres Burned [Change]	% Contained [Change]	Evacuations	Structures Threatened	Structures Destroyed	Page
San Bernardino County						
Valley Fire	1,350 [+0]	82% [+0%]	None listed	None listed	None listed	24
Shasta & Trinity Counties						
Carr Fire	229,651 [+14,283]	90% [+18%]	Lifted	None	1,604	25-30
Shasta County						
Gorge Fire *	155	90%	None listed	None listed	None listed	31
Hirz Fire	17,467 [+7.704]	17% [+10%]	YES	160	None	32-33
Tulare County						
River Fire (FINAL)	668 [-2]	100% [+55%]	None listed	None listed	None listed	34
Tuolumne County						
Donnell Fire	35,000 [+4,921]	51% [+21%]	YES	220	135	35-36



* Newly added fire



Current Wildland Fires

as of August 21 2018 - 0800 Hours



 Active Fire (9)
 Recently Contained (1)
LRA - Local Responsibility Area
SRA - State Responsibility Area
FRA - Federal Responsibility Area



August 21 2018 - 0800 hrs
 Produced by: Cal OES GIS Division
 Source: CalOES, FAMWEB 209s, IRWIN
 Active_Incident\Fires\Statewide_Daily_Fire_Maps
 \Statewide_Daily_Fire_Maps.aprx

Weather Information

Source: Cal OES Daily Situation Report - August 21, 2018

RH = Relative Humidity

NORTHERN CALIFORNIA

For the most part, some form of a low pressure trough will be over the Pacific NW and Northern California over the next 7 days. Today's version of the trough may generate a few afternoon and evening thunderstorms, primarily over Modoc and northern Washoe Counties. The storms would most likely be a mix of wet and dry. This possibility warrants High Risk designation for those areas today. The next best chance for thunderstorms or light showers looks to be Friday in our northern areas, but this remains very uncertain at this time. Otherwise, conditions will remain dry across the region as any troughs pass through.

There will be areas of daily gusty, afternoon SW to W winds through The Delta and along and east of the Cascade/Sierra crest. The strongest afternoon gusts will mostly be 15-25 mph in those areas. Otherwise, there will be lighter, typical-speed, gusty afternoon W to NW winds for the Coast Range westward and southerly winds through the Sacramento Valley its nearby areas.

Afternoon high temperatures will be quite seasonable for the next 7 days with the warmest inland areas mostly in the 90s. Afternoon min RH values will remain about 7-17% in the driest locations. Overnight relative humidity (RH) recovery may improve in bottom areas somewhat, but still remain moderate while relatively poor recovery is still expected mid slope and higher.

SOUTHERN CALIFORNIA

A quiet weather pattern will persist through the week as the district will be sandwiched between high pressure over the Southwest and a deep trough over the Pacific Northwest. Onshore flow will be moderate throughout the period, resulting in night through morning stratus along the coast and breezy conditions in and near the desert. Southwest winds of 15-25 mph with gusts to 35 mph will be possible across the Kern County Mountains and Banning Pass eastward into the high desert each afternoon this week. High temperatures will be 3-5 degrees above average with readings in the mid-90s in the valley and lower foothills to 108 in the low desert. Minimum RH will be lowest this week in Central California where afternoon readings will range from 8-15% across the central coast interior and the Sierra Foothills. Isolated wet thunderstorms will be possible across the Cleveland National Forest today, but otherwise, no thunderstorms are expected through the rest of the outlook period. Slightly cooler weather and a deeper marine layer is possible toward the end of the week.

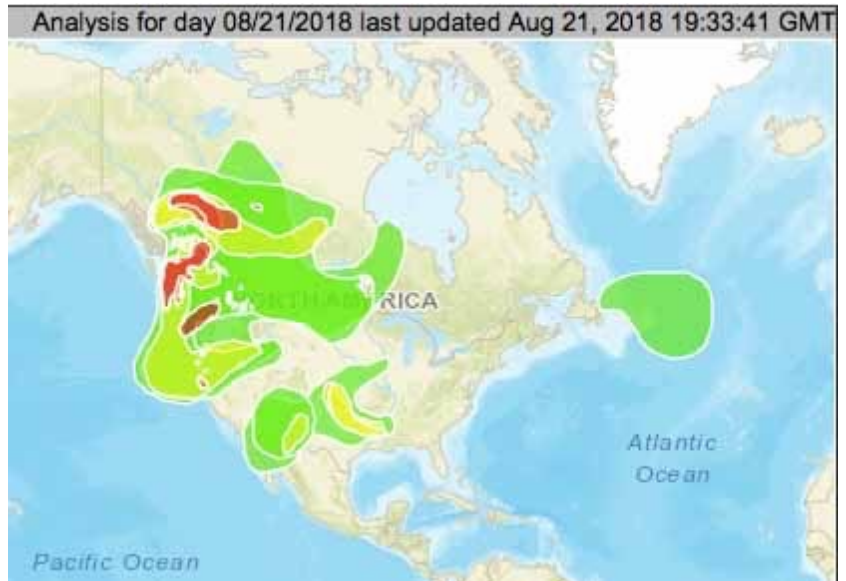
Red Flag Warnings/Watches & Air Quality

Red Flag Warnings & Watches August 21, 2018



■ = Fire Weather Warning ■ = Fire Weather Watch
 Source: <https://www.weather.gov/fire/>

North America Smoke Plumes

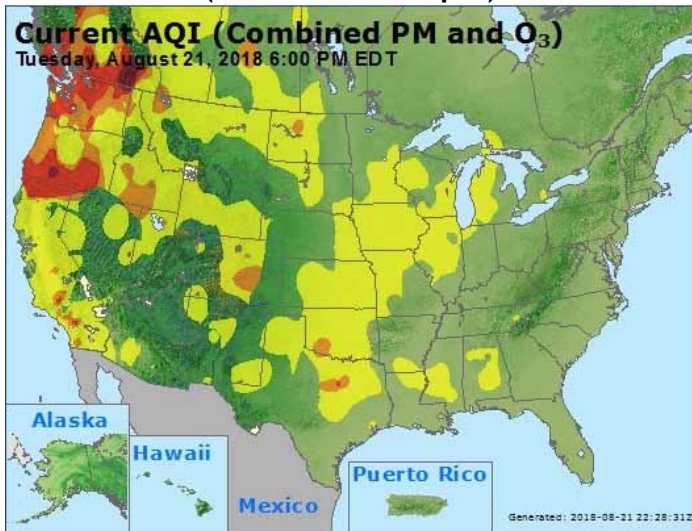


Source: <https://www.ospo.noaa.gov/Products/land/hms.html>

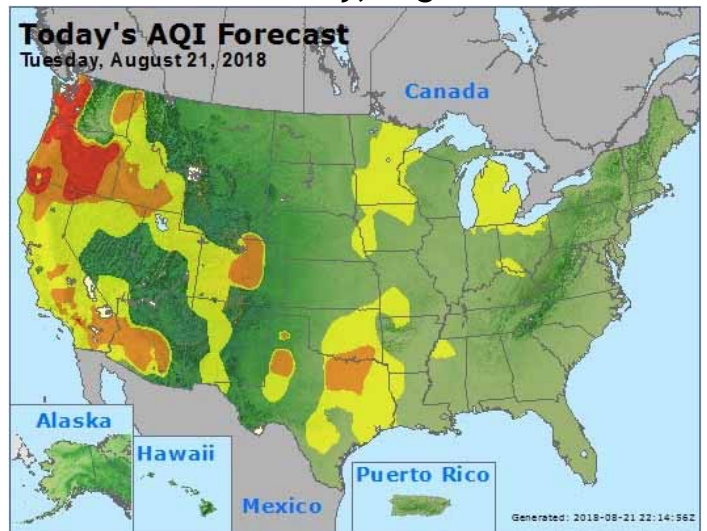
Current Watches, Warnings or Advisories for California Link

<https://alerts.weather.gov/cap/ca.php?x=1>

Current Air Quality (as of 8/21 3:00pm)



Air Quality Forecast for Tuesday, August 21



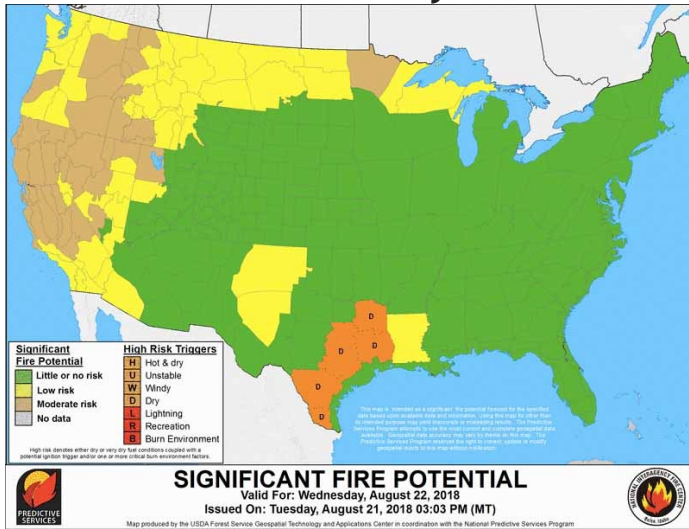
Source: https://www.airnow.gov/index.cfm?action=airnow.local_state&stateid=5&mapcenter=0&tabs=0

Legend: AQI = Air Quality Index; PM = Particulate Matter; O₃ = Ozone

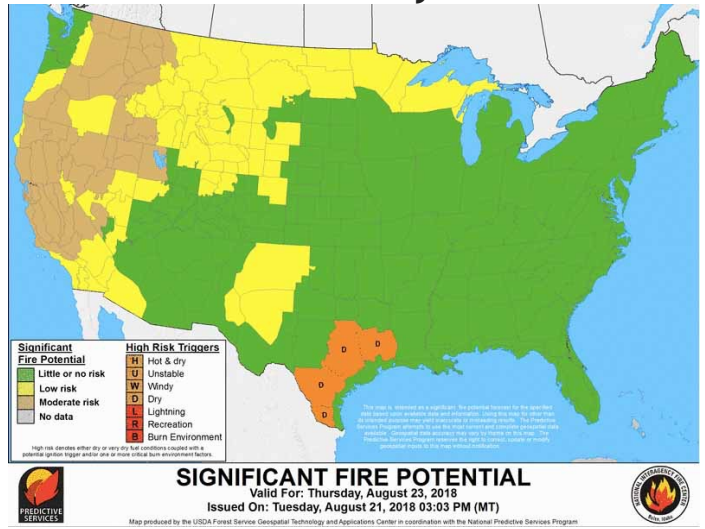
Air Quality Index Basics Overview: <https://airnow.gov/index.cfm?action=aqibasics.aqi>

Significant Fire Potential Maps

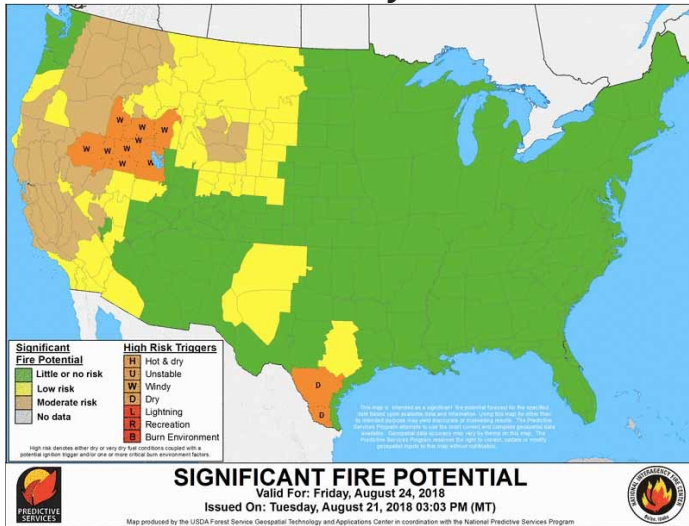
Wednesday



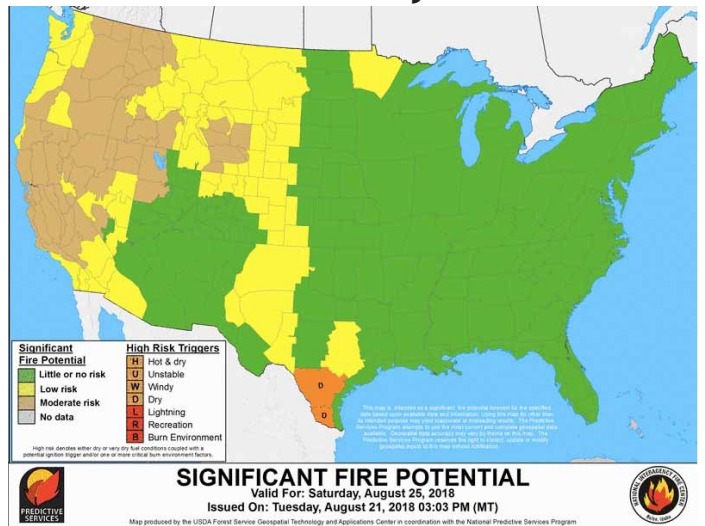
Thursday



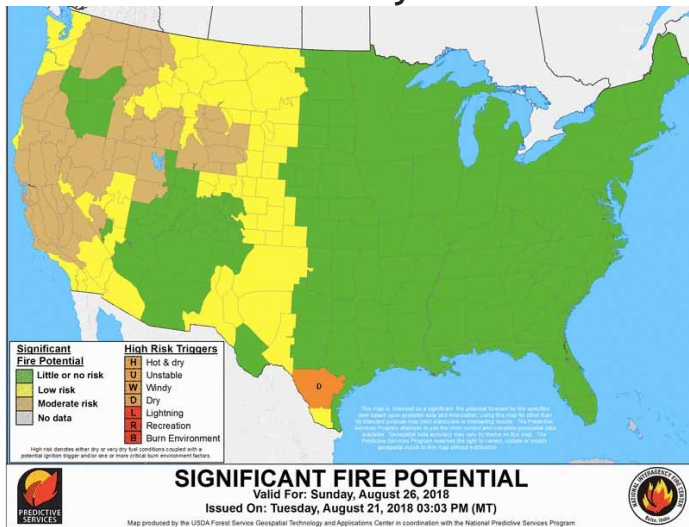
Friday



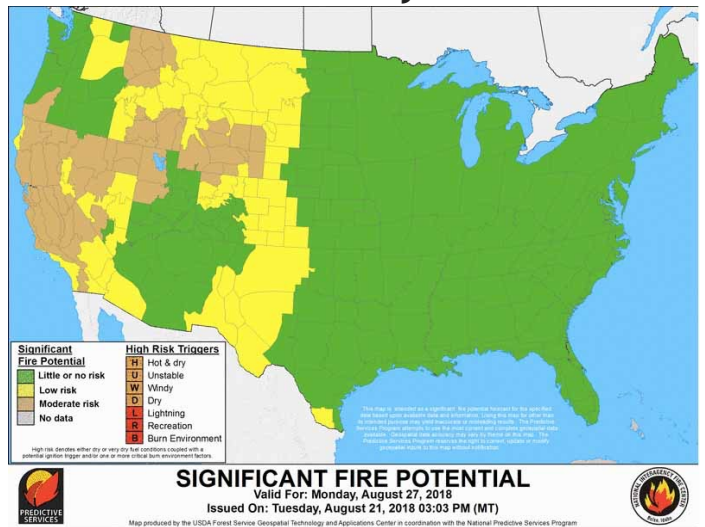
Saturday



Sunday



Monday



Source: <http://psgeodata.fs.fed.us/staticmap.html>

Natchez Fire - Del Norte & Siskiyou Counties

Acres Burned [Change]	% Contained [Change]
20,275 (1) [+3,305]	70% (1) [+13%]

Start Date	Estimated Containment Date
July 15, 2018 (1)	October 15, 2018 (1)

Lead Agency(ies)
U.S. Forest Service (1)

Initial Location
8 miles northwest of Happy Camp, CA (1)

Structures Threatened	Structures Destroyed
Not listed	None listed

Community Meeting
Tuesday, August 21, 2018 at 6:00 p.m. In the Happy Camp Grange, 64501 2nd Street, Happy Camp, CA (2)

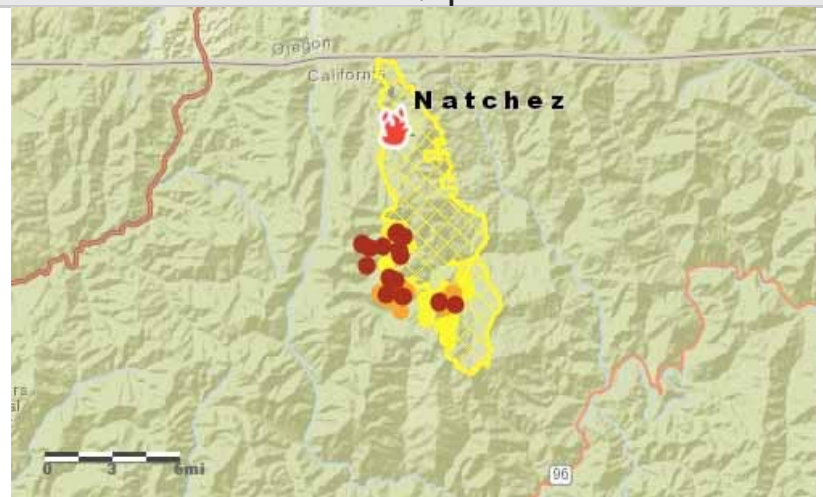
Infrastructure Impacts
Powerlines in the fire area remain de-energized and threatened. (3)

Cause of the Fire
Lightning (1)

Hashtags
#NatchezFire



Fire Maps



Source: [National Interagency Fire Center Map \(Aug 21, 2018\)](#)

Impacted Zip Codes: 96039

Nearby Zip Codes: fairly central in the impacted zip code

Fire Information Line: 530-493-1524 7:00am-8:00pm or 2018.NatchezFire@firenet.gov

Additional Maps: <https://inciweb.nwcg.gov/incident/maps/5948/> and <http://nifc.maps.arcgis.com/apps/MapSeries/index.html?appid=004eb407a56143da890a8e50056fd82b>

Projected Fire Activity

Moderate Backing Flanking Torching Narrative: Moderate surface fire with backing, flanking, and occasional single tree and group tree torching is occurring in areas of receptive brush, heavy fuels, the nighttime thermal belt or where smoke has cleared. In areas of a strong smoke inversion, fire activity will primarily be low intensity backing and or creeping. (1)

24hrs: Continue moderate spread of the main fire to the south towards Baldy Mountain and west further into the Siskiyou Wilderness. Fire spread is expected to back further down into the Copper Creek drainage. Isolated thunderstorms could increase initial attack in the area and gusty winds may increase fire activity. Any lightning strikes will be efficient in starting new fires with the very dry fuels. (1)

48 hrs: Continued spread of the main fire to the south towards Baldy Mountain and west further into the Siskiyou Wilderness. Fire spread is expected to continue down the Copper Creek drainage. (1)

Natchez Fire - Del Norte & Siskiyou Counties

Evacuations

Mandatory Evacuation:

- 2 homes at end of South Fork Road (1)
- one residence in the South Fork of Indian Creek(1)

Evacuation Warning:

- all other residences accessed by the South Fork Road and Grayback road north of the junction of the South Fork Road and the Grayback Road. (1)
- The community of Sunstar. (1)
- All residences on or accessed from the Indian Creek/Grayback Road from the intersection with Doolittle Creek, north to West Branch Campground. (1)

Information Sources

- 1) InciWeb Incident Page - Natchez Fire: <https://inciweb.nwcg.gov/incident/5948/> (Updated: August 20,2018 7:48pm)
- 2) InciWeb - August 21 Community Meeting in Happy Camp, CA: <https://inciweb.nwcg.gov/incident/article/5948/46323/> (Updated: August 20, 2018)
- 3) Northern California Geographic Coordination Center - News & Notes - Natchez Fire: <https://gacc.nifc.gov/oncc/news.php> (Updated: August 21, 2018 7:45am)

Mill Creek 1 Fire - Humboldt County

Acres Burned [Change]	% Contained [Change]
1,500 (2) [+1,440]	26% (2) [+18%]

Start Date	Estimated Containment Date
August 16, 2018 (1)	September 5, 2018 (2,3,4)

Lead Agency(ies)
Hoop Valley Tribe and US Forest Service (2)

Initial Location
Hwy 96 & Mill Creek Road, northeast of the Town of Hoopa (1)



Structures Threatened	Structures Destroyed
150 residences (4)	None (3,4)

Other Infrastructure Threats
Highway 96 is closed from Bull Creek to Mill Creek (2)

Cause of the Fire
Arson (2)

Hashtags
#millcreek1fire

Fire Maps
Source: National Interagency Fire Center Map (Aug 21, 2018)
Impacted Zip Codes: 95546
Nearby Zip Codes: n/a
Fire Information Line: 530-618-2844 7:00 a.m. to 8:00 pm

Projected Fire Activity

24 hrs: Fire behavior will be a repeat of yesterday. Threats to Highway 96 corridor will continue due to rollout and spotting. On the northeastern corner of the fire, there is a potential for spotting into steep sub-drainages of Mill Creek which would contribute to large fire growth. (2)

48 hrs: much of the same fire behavior is expected. Rollout across Highway 96 would likely lead to spotting across the Trinity River in extremely rugged terrain further impacting transportation and the timber base. (2)

72 hrs: Continued moderate fire behavior. However, difficult terrain and limited resources will likely allow continued movement on the west and northeast fronts. (2)

72+ hours: Without suppression actions, the fire will continue to grow both to the west and northeast. (2)

Evacuations

Evacuation Advisory: homes in the Mill Creek / Norton Creek area. (2)

Future Threat: If the fire jumps Highway 96 potential threat to 150 structures in the Mill Creek/ Bald Hills areas. (2,4)

Continued on Next Page

Mill Creek 1 Fire - Humboldt County

Critical Infrastructure Impacts

Power	Power lines along Hwy. 96 are currently threatened affecting approximately 1200 residences. (4)
Communications	Phone lines along Hwy. 96 are currently threatened affecting approximately 1200 residences. (4)
Water	Watersheds impacted include Mill Creek, Trinity River and Klamath River. (4)

Information Sources

- 1) Cal Fire Incident Page - Mill Creek 1 Fire: http://www.fire.ca.gov/current_incidents/incidentdetails/Index/2216 (Updated: August 16, 2018 2:44 pm)
- 2) InciWeb Incident Page - Mill Creek 1 Fire: <https://inciweb.nwcg.gov/incident/6161/> (Updated: August 21, 2018 2:46pm)
- 3) National Interagency Coordination Center Incident Management Situation Report Thursday, August 21, 2018 - 0530 MT
- 4) Northern California Geographic Coordination Center Short Briefing 209 Summary Report - Mill Creek 1 Fire (Updated: August 21, 2018 5:52am)

Call Fire - Kern County

– Newly Added Fire –

Acres Burned [Change]	% Contained [Change]
370 (2)	50% (2)

Start Date	Estimated Containment Date
August 18, 2018 (1)	August 21, 2018 (3)

Lead Agency(ies)
USFS Sequoia National Forest (1)

Initial Location
off Cow Flat Road and Highway 178, west of Lake Isabella (1); South side of Highway 178, 12 miles west of the community of Lake Isabella. (2)



Structures Threatened	Structures Destroyed
5 (4)	None (3,4)

Evacuations
None listed

Other Infrastructure Threats
None listed

Projected Fire Activity
There has been no growth since 8/19/2018, however containment has risen (2)

Cause of the Fire
Under Investigation (2)

Hashtags
#callfire

Fire Maps
Source: National Interagency Fire Center Map (August 21, 2018)
Impacted Zip Codes: 93306
Nearby Zip Codes: n/a

Information Sources

- 1) Cal Fire Incident Page - Call Fire: http://www.fire.ca.gov/current_incidents/incidentdetails/Index/2220 (Updated: August 18, 2018 4:50 pm)
- 2) InciWeb Incident Page - Call Fire: <https://inciweb.nwccg.gov/incident/6155/> (Updated: August 21, 2018 8:40am)
- 3) National Interagency Coordination Center Incident Management Situation Report Thursday, August 21, 2018 - 0530 MT
- 4) Southern California Area Coordination Center Situation Report - Call Fire (August 20, 2018 6:22pm)

Mendocino Complex - Lake, Mendocino, Colusa Counties

Fire	Acres Burned [Change]	% Contained [Change]
Ranch Fire	355,612 (1) [+34,238]	67% (1) [-4%]
River Fire	48,920 (2)	100% (2)
Combined	404,532 (3) [+34,238]	74% (3) [-2%]

Start Date	Estimated Containment Date
July 27, 2018 (1)	September 1, 2018 (3,5) Should critical resources not be obtained expect containment date to be approximately 10/15/2018 (4)

Lead Agency(ies)
Unified command: CAL FIRE and US Forest Service (3)

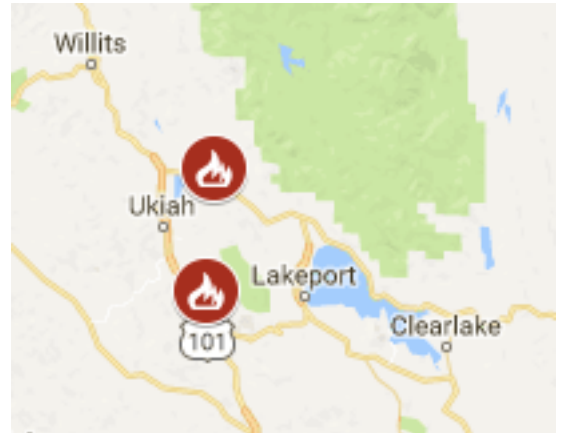
Initial Location	
Ranch Fire	SR CA-20 at MP 39, Old Lake County SR, Blue Lake, 8 mi NE of Ukiah (3)
River Fire	Old River Road, 6 miles north of Hopland (3)

Snapshot Overview	
Structures Threatened	1,050
Structures Destroyed	277
Power Infrastructure	Threatened
Water Infrastructure	Boil Water Notices
Telecom Infrastructure	Threatened

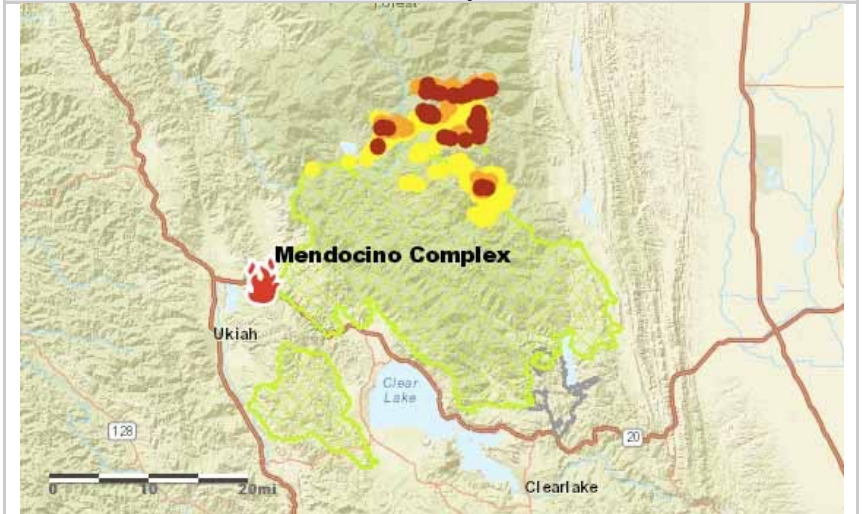
Cause of the Fire
Unknown (4)

State Emergency Proclamation
07/28/18, Governor issued Emergency Proclamations for Lake and Mendocino counties (6)
08/06/18, Lake County requested CDAA & a waiver on County's share of cost under CDAA (6)
08/09/18 Governor issued executive order to cut red tape & help streamline recovery efforts in communities impacted by the wildfires (6)

Hashtags
#RanchFire #RiverFire #mendocinocomplex



Fire Maps



Source: [National Interagency Fire Center Map \(Aug 21, 2018\)](#)

Impacted Zip Codes: 95423, 95435, 95443, 95449, 95451, 95453, 95458, 95464, 95469, 95470, 95482, 95485, 95493, 95939, **95963**, 95979, 95987, **95988**

Nearby Zip Codes: 95418, 95422, 95424, 95457, 95470, 95481, 95490, 95939, 95955, 96074

Cal Fire Maps: http://cdfdata.fire.ca.gov/incidents/incidents_details_maps?incident_id=2175

InciWeb Maps: <https://inciweb.nwcg.gov/incident/maps/6073/>

Continued on Next Page

Mendocino Complex - Lake, Mendocino, Colusa Counties

Projected Fire Activity

Overall Activity	<p>Ranch Fire:</p> <ul style="list-style-type: none"> • Fire activity is expected to increase in the later part of the afternoon as smoke clears. Fire activity is expected to decrease in the later evenings due to increased humidity and lower temperatures. (3) • There are approximately 52 miles of uncontrolled fire edge (4)
Direction	<p>Ranch Fire</p> <ul style="list-style-type: none"> • The fire growth has been moving north/northeast and east for the past several days. As westerly winds increase in the day, the fire will increase rate of spread (ROS) to the east as it enters east/west aligned drainages. (4) • In DIV D, the fire will continue to back down towards the Eel River Road. Rolling material is still a high probability. The main fire near DIV F, DIV G, and DIV H will continue to move north/northeast following drainages. When the fire enters Cold Creek, the fire may split, going up towards DIV H following Eel Creek. (4) • The main fire will continue towards the northeast; however, it is possible for it to set up in west/east drainages, causing the fire to move more easterly. (4)
Smoke / Air Quality	<p>Mendocino National Forest - Sacramento Valley Area Smoke Outlook: https://tools.airfire.org/outlooks/MendocinoNationalForest-SacramentoValleyArea</p>

Evacuations

Colusa County	<p>MANDATORY:</p> <ul style="list-style-type: none"> • Areas south of the Colusa- Glenn County line, east of the Colusa-Lake County line, North of Goat Mountain Road extending to Sullivan Ridge and west of the Mendocino National Forest boundary including Fouts Springs Road (Forest Road M10). (3,7) <p>ADVISORY:</p> <ul style="list-style-type: none"> • All areas east of the Mendocino National Forest boundary and west of the East Park reservoir between the Glenn County line and Lodoga. (3,7) • Areas South of Goat Mountain Road extending to Sullivan Ridge east of the Colusa-Lake County line and West of the Mendocino National Forest boundary. (3,7)
Glenn County	<p>Census data for Glenn County shows 3181 persons are affected by mandatory evacuations and 2827 persons are affected with advisory evacuations (7)</p> <p>MANDATORY:</p> <ul style="list-style-type: none"> • All areas North of Glenn-Colusa County Line, east of the Mendocino National Forest boundary, south of County Road 308, and west of County Road 306. (3,7) • North of the Glenn-Colusa County line, east of the Glenn-Lake County line, south of County Road 308 and Forest Route 24N02, and west of County Road 306. (7) <p>ADVISORY:</p> <ul style="list-style-type: none"> • No evacuation advisories listed (3)

Continued on Next Page

Mendocino Complex - Lake, Mendocino, Colusa Counties

Evacuations (continued)

Lake County	<p>MANDATORY:</p> <ul style="list-style-type: none"> East of the Lake-Mendocino County Line, south of the Lake-Mendocino-Glenn County Line, west of the Lake- Colusa County Line, north of the fire perimeter and the Mendocino National Forest boundary. (3,7) <p>ADVISORY:</p> <ul style="list-style-type: none"> No evacuation advisories listed (3)
Mendocino County	<p>MANDATORY:</p> <ul style="list-style-type: none"> South and East of Eel River Road, west of the Mendocino-Lake county line, North of the 16000 block of Mid Mountain Road. (3,7) <p>ADVISORY:</p> <ul style="list-style-type: none"> North of Pine Ave, South of the 16000 block of Mid Mountain Road, west of the Mendocino National Forest boundary, and east of eastside Potter Valley/ Eel River Roads. (3,7) The Bureau of Land Management closure of the Cow Mountain Recreation Area remains in effect. (3)
Maps	<p>National Interagency Fire Center Evacuation Map: https://nifc.maps.arcgis.com/apps/MapJournal/index.html?appid=59b8ccc931b045e6bb9f4f7c184ef04c</p>

Evacuation Centers / Shelters

Small Animal Shelter	Mendocino County Animal Shelter, 298 Plant Rd., Ukiah (3)
Large Animal Shelter	<p>CLOSED - Redwood Riders Arena, 8300 East Rd., Redwood Valley (6)</p> <ul style="list-style-type: none"> Animals have been moved to the Mendocino County Animal Shelter (6)

Road Closures

Major Roads	<p>No major road closures listed</p> <p>Cal Trans Quick Maps: http://quickmap.dot.ca.gov</p>
Local Road - Colusa County	<p>Westbound Brim Road at the Mendocino National Forest boundary (3,7)</p> <p>Westbound Fouts Springs Road at the Forest Boundary (3,7)</p> <p>Westbound Goat Mountain Road at the Mendocino National Forest boundary (3,7)</p> <p>County Road Closures List: http://www.ccdpw.com/PDF%20Files/RoadClosures/Road%20Closure%20Report%20(Complete).pdf</p>
Local Road - Glenn County	<p>Westbound County Road 308 and Southbound County Road 306 at the 308/306 junction (3,7)</p> <p>Lodoga-Stonyford Road north at the Glenn- Colusa county line (3,7)</p> <p>All roadways West of County Road 306, South of County Road 308, and North of the Glenn- Colusa county line. (3,7)</p>

Continued on Next Page

Mendocino Complex - Lake, Mendocino, Colusa Counties

Road Closures (continued)

Local Roads - Lake County	Northbound Elk Mountain at Middle Creek Campground (3,7) Northbound Bartlett Springs Road at the Mendocino National Forest boundary (3,7)
Local Road - Mendocino County	Eastbound Eel River Road at County Road M6, 20N01 (3,7) Mendocino County Dept. Of Transportation - Facebook: https://www.facebook.com/MendocinoCountyDOT Mendocino County Dept. Of Transportation - Website: https://www.mendocinocounty.org/government/transportation/road-closures

Critical Infrastructure Impacts

Power	Threats to power infrastructure that support Lake and Mendocino Counties. (7)
Communications	Threats to communications infrastructure that support Lake and Mendocino Counties. (7)
Water	Boil water notices planned once repopulation happens for: Le Trianon Resort and High Valley Ranch (9)

Structures	Threatened	Damaged	Destroyed
Residential	1,025 (7)	13 (3,7)	155 (7)
Multiple-Residence	-	-	1 (7)
Mixed Residential/Commercial	-	-	1 (7)
Commercial	25 (7)	-	-
Other Structures	-	23 (3,7)	120 (3,7)
Total	1,050 (3)	36	277

Injuries / Fatalities	Civilian	Firefighter
Injuries	-	4 (4)
Fatalities	0 (7)	1 (4)

Community Infrastructure Threats

Post Office	Post Office - Closed	Alternate Location
	Stonyford Post Office, 259 Market St., 95979 (8)	Maxwell Post Office, 260 Oak St., 95955 (8)

Continued on Next Page

Mendocino Complex - Lake, Mendocino, Colusa Counties

Recovery

The recovery information listed here is specific to the Mendocino Complex. See the General Recovery Resources section for additional resources and links.

Disaster Recovery Center	Lake County DRC, Habematolel Pomo of Upper Lake Community Center, 9470 Main St., Upper Lake, Open 9:00am-7:00pm daily, 08/21/18 - TBD (6)
Missing & Found Pets	Lake County Lost & Found Pets: http://publicapps.lakecountyca.gov/publicanimals/Board/LostFound Lake County Animal Search: http://www.lakecountyca.gov/Government/Directory/Animal_Care_And_Control/Search.htm Mendocino County Animal Shelter: https://www.facebook.com/mendoanimalshelter/
Reporting Damages	How to Report Damage to the Mendocino County Office of Emergency Services: https://www.mendocinocounty.org/government/executive-office/office-of-emergency-services/report-damage-to-oes
Recovery Resource Lists	Mendocino County Fire Evacuee Resource List: https://www.mendocinocounty.org/home/showdocument?id=22057

Additional Information Resources

Cal Fire	Cal Fire Mendocino Complex Public Information Line: (707) 574-8261 or MendoComplex2018@gmail.com Cal Fire Mendocino Complex News Releases Sign-up (Constant Contact Form): https://visitor.r20.constantcontact.com/manage/optin?v=001uWnjXQrYldC7E8KAawvX0U8k7-2jLoe5dMTXhvrHHBFNITNVmL_s5fxasvBhMIS-9FCUqwZFi16W8jtPCEkOAp3wPpsnq06PVMFoVvSJLrg%3D California Interagency Incident Management Team 1 Mendocino Complex Flickr album: https://www.flickr.com/photos/ciimt1/sets/72157699994868485/
Cal OES	Business Operations Center: BusinessOp@caloes.ca.gov - Deactivated, though email is still monitored.
Colusa County	Nixle Alert Feed for the county: https://local.nixle.com/county/ca/colusa/ (NOTE - not actively used by county agencies) NOAA Watches & Warnings for the County: https://alerts.weather.gov/cap/wwaatmget.php?x=CAC011&y=1 County Road Closures List: http://www.ccdpw.com/PDF%20Files/RoadClosures/Road%20Closure%20Report%20(Complete).pdf
Glenn County	Nixle Alert Feed for the county: https://local.nixle.com/county/ca/glenn/ NOAA Watches & Warnings for the County: https://alerts.weather.gov/cap/wwaatmget.php?x=CAC021&y=1

Continued on Next Page

Mendocino Complex - Lake, Mendocino, Colusa Counties

Additional Information Resources

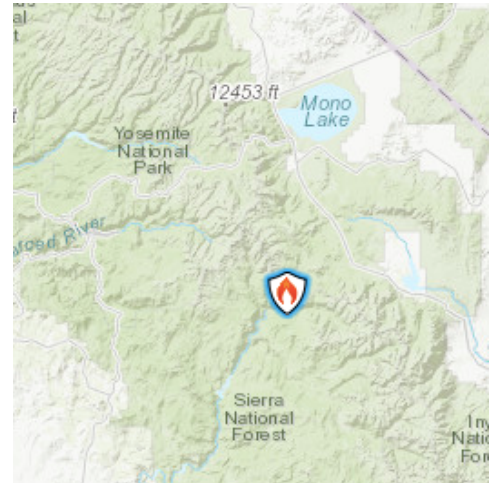
Lake County	Lake County Alerts Sign-up: https://member.everbridge.net/index/892807736729003#/signup Nixle Alert Feed for the county: https://local.nixle.com/county/ca/lake/ NOAA Watches & Warnings for the County: https://alerts.weather.gov/cap/wwaatmget.php?x=CAC033&y=1 Lake County Sheriff's Facebook: https://www.facebook.com/lakesheriff/ Lake County OES Facebook: https://www.facebook.com/LakeCountyOES
Mendocino County	Nixle Alert Feed for the county: https://local.nixle.com/county/ca/mendocino/ (NOTE - not currently being actively used for the fire) NOAA Watches & Warnings for the County: https://alerts.weather.gov/cap/wwaatmget.php?x=CAC045&y=1 Mendocino County Alerts Sign-up: https://member.everbridge.net/index/892807736722865#/signup Mendocino County Non-Emergency Call Center: (707) 467-6428 Mendocino County Sheriff's Facebook: https://www.facebook.com/MendocinoSheriff/

Information Sources

- 1) Cal Fire Incident Page - Ranch Fire: http://www.fire.ca.gov/current_incidents/incidentdetails/Index/2175 (Updated: August 21, 2018 8:16 am)
- 2) Cal Fire Incident Page - River Fire: http://www.fire.ca.gov/current_incidents/incidentdetails/Index/2178 (Updated: August 16, 2018 9:00 am)
- 3) Cal Fire Incident Update - Mendocino Complex: http://cdfdata.fire.ca.gov/admin8327985/cdf/images/incidentfile2175_4071.pdf (Updated: August 21, 2018 7:00am)
- 4) InciWeb Incident Page - Mendocino Complex: <https://inciweb.nwcg.gov/incident/6073/> (Updated: August 21, 2018 6:19am)
- 5) National Interagency Coordination Center Incident Management Situation Report Thursday, August 21, 2018 - 0530 MT
- 6) Cal OES Daily Situation Brief - August 21, 2018
- 7) Northern California Geographic Coordination Center Short Briefing 209 Summary Report - Mendocino Complex (Updated: August 21, 2018 5:55am)
- 8) USPS Service Disruptions: <http://about.usps.com/news/service-alerts/business-weather-updates.htm> (Updated: August 10, 2018 7:00am, no new update since this time)
- 9) Cal OES Business Operations Center Morning Report - August 16, 2018

Lions Fire - Madera County

Acres Burned [Change]	% Contained [Change]
11,606 (1) [+841]	75% (1) [+5%]
Start Date	Estimated Containment Date
June 1, 2018 (1)	August 25, 2018 (1,2)
Lead Agency(ies)	
National Incident Management Organization Team	
Initial Location	
7 miles southwest of Mammoth Lakes. (1)	



Structures Threatened	Structures Destroyed
None (2)	None (2)
Evacuations	
None (2)	
Other Infrastructure Threats	
None listed	
Projected Fire Activity	
<p>Fire is backing into the North Fork of the San Joaquin River. Moderate flanking, running and single tree torching. (1)</p> <p>Increased fire spread to the north and west with group torching, spotting and perimeter growth. Significant potential growth when/where factors align. (1)</p> <p>If fire crosses the San Joaquin River the fire could make a run west towards the contingency handline.(1)</p>	
Cause of the Fire	
Lightning Strike (1)	
Hashtags	
#LionsFire	

Fire Activity Map
Source: National Interagency Fire Center Map (Aug 21, 2018)
Impacted Zip Codes: in an undefined zip code area
Additional Fire Maps: https://inciweb.nwcg.gov/incident/maps/5850/
Information Line: lionsfireinformation@gmail.com or 925-817-0826

Information Sources

- 1) InciWeb Incident Page - Lions Fire: <https://inciweb.nwcg.gov/incident/5850/> (Updated: August 21, 2018 7:21am)
- 2) National Interagency Coordination Center Incident Management Situation Report Thursday, August 21, 2018 - 0530 MT

Ferguson Fire - Mariposa County

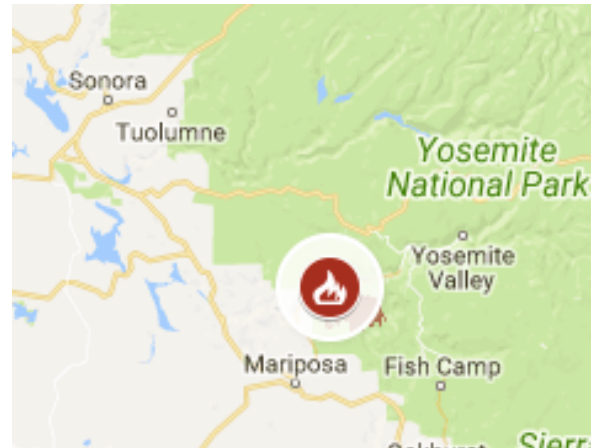
— FINAL —

Acres Burned [Change]	% Contained [Change]
96,901 (1) [+91]	100% (1) [+13%]

Start Date	Estimated Containment Date
July 13, 2018 (1)	-

Lead Agency(ies)
Sierra National Forest, Yosemite National Park and the Stanislaus National Forest (2)

Initial Location
Highway 140 and Savages Trading Post (2); Highway 140 and Hite Cove, near El Portal (1)



Structures Threatened	Structures Destroyed
124 (3)	10 (2); 11 (3)

Projected Fire Activity
Burning within the interior of the fire will continue to produce unhealthy conditions that will impact Yosemite National Park and mountain communities down-drainage to the west. (2)
Smoke: San Joaquin Valley Air Pollution Control District Air Quality Forecast Map: http://www.valleyair.org/aqinfo/forecast.htm

Cause of the Fire
Unknown (8)

State Emergency Proclamation
07/26/18, Governor issued an emergency proclamation for Mariposa County due to the effects of the Ferguson Fire (4)

Hashtags
#fergusonfire

Fire Maps



Source: [National Interagency Fire Center Map](#) (Aug 16, 2018)

Impacted Zip Codes: 93623, 95311, 95318, 95321, 95338, 95345, 95389

Nearby Zip Codes: 93601, 93604, 93644

Fire Information Line: (530) 377-6424

Fire Information Email: fergusonsnf@gmail.com

Additional Maps: <https://inciweb.nwcg.gov/incident/maps/5927/2>

Mariposa County Recovers Website: <http://www.mariposacountyrecovers.org>

Information Sources

- 1) Cal Fire Incident Page - Ferguson Fire: http://www.fire.ca.gov/current_incidents/incidentdetails/Index/2135 (Updated: August 19, 2018 7:14 am)
- 2) InciWeb Incident Page - Ferguson Fire: <https://inciweb.nwcg.gov/incident/5927/> (Updated: August 20, 2018 10:41am)
- 3) Southern California Area Coordination Center Situation Report - Ferguson Fire (August 20, 2018 6:10pm)
- 4) Cal OES Daily Situation Brief - August 16, 2018

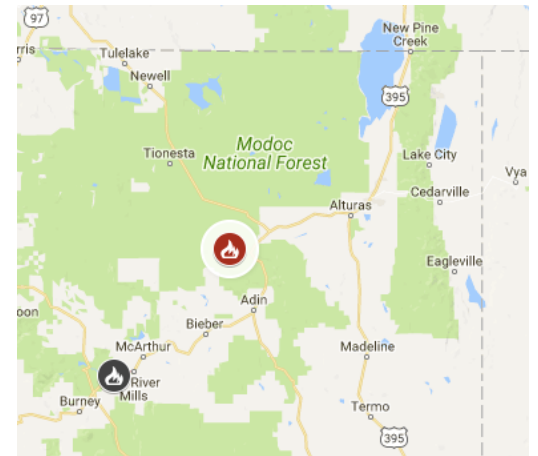
Stone Fire - Modoc County

Acres Burned [Change]	% Contained [Change]
23,221 (1) [+19,721]	12% (1) [+12%]

Start Date	Estimated Containment Date
August 15, 2018 (3)	September 1, 2018 (2,4)

Lead Agency(ies)
Northern California Incident Management Team 2

Initial Location
10 miles west-southwest of Canby, California. 15 miles northwest of Adin, California. (1)



Projected Fire Activity
Heavy dead fuels in the fire area is leading to control issues. (4)
Cause of the Fire
Lightning (1)
Hashtags
#stonefire

Fire Maps
<p>A detailed fire map showing the Stone Fire area. The fire perimeter is indicated by red and yellow dots. The map includes a scale bar from 0 to 6 miles and labels for highways 139 and 299. The letters 'S T C' are overlaid on the fire area.</p>
Source: National Interagency Fire Center Map (Aug 21, 2018)
Impacted Zip Codes: 96015, 96054
Nearby Zip Codes: 96006, 96101
Fire Information Line: 530-233-8847
Fore Information Email: mdffireinfo@gmail.com

Evacuations

Mandatory	Along County Road 84 and 85 from Hwy 299 to the fires edge. (4)
Lifted	County Road 214 and County Road 215 (1)
Future Threat	Possible evacuation of residents in Canby and Cal Pines if fire continues to spread to Northeast and east. (4)

Continued on Next Page

Stone Fire - Modoc County

Transportation Infrastructure Impacts

Major Roads	Traffic along Hwy 299 is subject to requiring a pilot car for escort based on fire behavior. Threatened closure of Hwy 139 and Hwy 299 (4) Cal Trans Quick Maps: http://quickmap.dot.ca.gov
Rail	Burlington Northern Railway and Lake County Railway (share the same rail) are in alignment with predicted fire spread and threatened. (4)

Critical Infrastructure Impacts

Power	Western Power Authorities Booneville Power Plant and infrastructure threatened. If power is interrupted both Modoc County and Lassen County could experience a black out. (4)
Communications	Grouse Mountain Repeater Site threatened which could impact National Flight Following, Air Guard & Tone loss (3) A fiber optic cable and telephone cable that runs parallel to Hwy 299 were damaged by the fire and subsequently temporarily repaired on Monday. (4)
Water	Watersheds threatened (4)

Structures	Threatened	Damaged	Destroyed
Residential	106 (4)	-	-
Commercial	12 (4)	-	-
Other Structures	1 (4)	-	2 (4)
Total	119	None (4)	2

Community Infrastructure Impacts

Healthcare	Residents of Canby and nearby areas will possibly be unable to access medical care facilities if Hwy 139 and Hwy 299 are closed. (4)
Communications	Grouse Mountain Repeater Site threatened which could impact National Flight Following, Air Guard & Tone loss (3) A fiber optic cable and telephone cable that runs parallel to Hwy 299 were damaged by the fire and subsequently temporarily repaired on Monday. (4)

Community Meeting

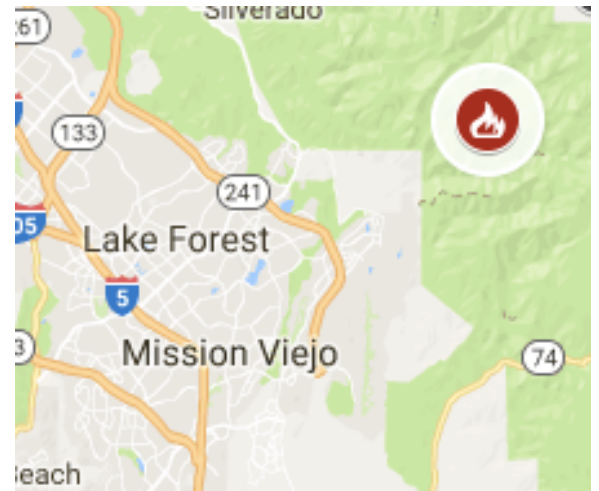
August 21, 2018, at the Cal Pines Fire Station at 4 p.m., located at 345 County Road 230, Alturas, Ca (1)

Information Sources

- 1) InciWeb Incident Page - Stone Fire: <https://inciweb.nwcg.gov/incident/6148/> (Updated: August 21, 2018 6:40am)
- 2) National Interagency Coordination Center Incident Management Situation Report Thursday, August 21, 2018 - 0530 MT
- 3) Cal OES Daily Situation Brief - August 21, 2018
- 4) Northern California Geographic Coordination Center Short Briefing 209 Summary Report - Stone Fire (Updated: August 21, 2018 5:51am)

Holy Fire - Orange & Riverside Counties

Acres Burned [Change]	% Contained [Change]
22,885 (1) [-101]	91% (1) [+8%]
Start Date	Estimated Containment Date
August 6, 2018 (1)	August 26, 2018 (1,2)
Lead Agency(ies)	
Unified command: US Forest Service and CAL Fire	
Initial Location	
Holy Jim/Trabuco Canyon (1)	



Evacuations
All evacuations lifted. (1)
Road Closure
The Long Canyon Road loop will remain closed on the west above the entrance to Mystic Oaks and on the east on North Main Divide at Highway 74. (1)
Cause of the Fire
Arson
Projected Fire Activity
Occasional smoke from smoldering vegetation will continue to be seen from isolated spots within the burn area. (1) There are no immediate weather concerns for the area, despite temperatures remaining in the mid to high 90's. (1)
Hashtags
#hollyfire #hollyfire

Fire Maps
Source: National Interagency Fire Center (August 21, 2018)
Impacted Zip Codes: 92530, 92676, 92883
Nearby Zip Codes: 92531, 92570, 92678, 92679, 92881
Trabuco Ranger District of the Forest Service: 951-736-1811
Declaration / Proclamation
8/9/18 Governor Declares State of Emergency in Orange and Riverside Counties Due to Holy Fire (4) 8/9/18, a Local Health Emergency Proclamation was received from Riverside County (4)

Structures	Threatened	Damaged	Destroyed
Residential	-	-	12 in Orange County + 6 in Riverside County (1)
Total	None (3)	18 (5)	24 (2)

Information Sources

- 1) InciWeb Incident Page - Holy Fire: <https://inciweb.nwccg.gov/incident/6106/> (Updated: August 21, 2018 11:06am)
- 2) National Interagency Coordination Center Incident Management Situation Report Thursday, August 21, 2018 - 0530 MT
- 3) Southern California Area Coordination Center Situation Report - Holy Fire (August 20, 2018 5:36pm)
- 4) Cal OES Daily Situation Brief - August 16, 2018
- 5) Cal OES Business Operations Center Morning Report - August 16, 2018

Front Fire - Santa Barbara County

– Newly Added Fire –

Acres Burned [Change]	% Contained [Change]
900 (1)	29% (1)
Start Date	Estimated Containment Date
August 19, 2018 (1)	August 26, 2018 (3)
Lead Agency(ies)	
USFS Los Padres National Forest (2)	
Initial Location	
Rockfront Ranch / 30 Miles East of Santa Maria on Highway 166 (1); off Highway 166 and Sierra Madre Road (2)	



Structures Threatened	Structures Destroyed
Not listed	None (3)

Evacuations
No evacuations (1)

Other Infrastructure Threats
Threat to major power lines (1,5); Lines in the area are PG&E lines which are no longer in service. There is no threat to the power system. (4)

Projected Fire Activity
Moderate fire behavior with flanking and spotting. (3)

Cause of the Fire
Under Investigation (1)

Hashtags

Fire Maps
<p>A detailed topographic map showing the fire perimeter in yellow. The fire is located near the intersection of Highway 166 and Cuyama Hwy. The word 'Front' is written in the center of the fire area. A scale bar indicates 0, 0.5, and 1 mile.</p>
Source: National Interagency Fire Center Map (August 21, 2018)
Impacted Zip Codes: 93454
Nearby Zip Codes: 93254

Information Sources

- 1) InciWeb Incident Page - Front Fire: <https://inciweb.nwcg.gov/incident/6158/> 9Updated: August 21, 2018 8:40am)
- 2) Cal Fire incident Page - Front Fire: http://www.fire.ca.gov/current_incidents/incidentdetails/Index/2222 (Updated: August 19, 2018 3:06 pm)
- 3) National Interagency Coordination Center Incident Management Situation Report Thursday, August 21, 2018 - 0530 MT
- 4) Cal OES Daily Situation Brief - August 21, 2018
- 5) Southern California Geographic Coordination Center - News & Notes - Front Fire: <https://gacc.nifc.gov/oscc/news.php> (Updated: August 21, 2018 8:05am)

Valley Fire - San Bernardino County

Acres Burned [Change]	% Contained [Change]
1,350 (1) [+0]	82% (1) [+0%]

Start Date	Estimated Containment Date
July 6, 2018 (1)	November 1, 2018 (1)

Lead Agency(ies)
San Bernardino National Forest (1)

Initial Location
Forest Falls, CA (1)



Structures Threatened	Structures Destroyed
None listed	None listed

Evacuations
None listed

Other Infrastructure Threats
None listed

Projected Fire Activity
Minimal smoldering (1)

Cause of the Fire
Under Investigation (1)

Hashtags
#ValleyFire

Fire Maps



Source: [National Interagency Fire Center Map](#) (August 2, 2018)

Impacted Zip Codes: 92339

Nearby Zip Codes: 92399

Additional Fire Maps: <https://inciweb.nwcg.gov/incident/maps/5900/>

Information Sources

- 1) InciWeb Incident Page - Valley Fire: <https://inciweb.nwcg.gov/incident/5900/> (Updated: August 20, 2018 3:48pm)

Carr Fire - Shasta & Trinity Counties

Acres Burned [Change]	% Contained [Change]
229,651 (1) [+14,283]	90% (1) [+18%]
Start Date	Estimated Containment Date
July 23, 2018 (1)	August 22, 2018 (3)
Lead Agency(ies)	
Unified Command: CAL FIRE Shasta-Trinity Unit, Redding City Fire and Whiskeytown National Park (1)	
Initial Location	
Hwy 299 and Carr Powerhouse Rd, Whiskeytown (1)	



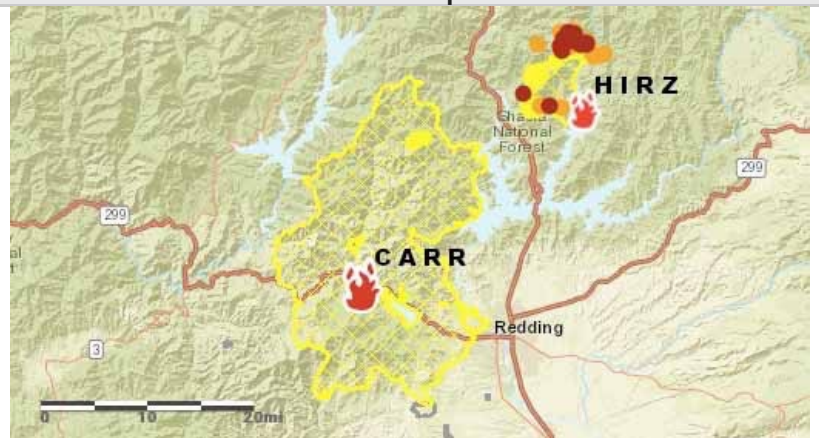
Snapshot Overview	
Structures Threatened	None
Structures Destroyed	1,604
Power Infrastructure	Threats
Water Infrastructure	Do Not Drink
Telecom Infrastructure	Threats/Impacts

Cause of the Fire
Mechanical Failure of Vehicle (1)

Emergency Proclamation
07/26/18, Governor issued emergency proclamations for Shasta county due to the effects of the Carr fire. (4)
7/27/18 Shasta County and the City of Redding both submitted Emergency Proclamations. (4)
7/31/18 Trinity County proclaimed a local emergency (4)
08/01/18, Shasta County proclaimed a local health emergency. (4)
08/04/18, a Presidential Major Disaster Declaration was approved for Shasta County: DR-4382-CA (4)
08/09/18 Governor issued executive order to cut red tape & help streamline recovery efforts in communities impacted by the wildfires (4)

Hashtags
#CarrFire

Fire Maps



Source: [National Interagency Fire Center Map \(Aug 21, 2018\)](#)

Impacted Zip Codes: 96001, 96003, 96007, 96019, 96024, 96033, 96047, 96051, 96052, 96079, 96087, 96089, 96095, 96099

Nearby Zip Codes: 96070, 96091

Additional Cal Fire Maps: http://cdfdata.fire.ca.gov/incidents/incidents_details_maps?incident_id=2164

Air Quality Map - Shasta County: https://www.co.shasta.ca.us/index/drm_index/aq_index/aq_map.aspx

Continued on Next Page

Carr Fire - Shasta County (continued)

Projected Fire Activity

Heavy smoke over the area has continued to significantly reduced fire activity but pockets unburned fuels may continue to burn within the perimeter. (2)

Evacuations - Mandatory

Overview	All remaining evacuations have been lifted as of 08/15/18 at 1430 hours. (6) See Shasta County Sheriff's Office Website for details on areas being repopulated and access routes. https://www.co.shasta.ca.us/index/sheriff_index.aspx
Maps	Carr Fire - Evacuation / Re-population map: http://nifc.maps.arcgis.com/apps/webappviewer/index.html?id=cdd41ecf8575458ea8851c6f76770d50 Car Fire Activity Map: http://redding.maps.arcgis.com/apps/webappviewer/index.html?id=94b379a91e0f47cb91712da22f603d39

Evacuation Centers / Shelters

Redding	All evacuation centers are closed. (7)
Small Animal Shelter	Haven Humane, 1816 CA-273, Anderson (2)
Large Animal Shelter	Tehama District Fairgrounds, 650 Antelope Blvd., Red Bluff

Transportation / Road Closures

Local Roads - Shasta County	None listed Shasta County Road Closures: https://www.co.shasta.ca.us/index/sheriff_index.aspx
Local Roads - Trinity County	None listed Shasta County Sheriff's also listing fire related road closures for Trinity County: https://www.co.shasta.ca.us/index/sheriff_index.aspx

Critical Infrastructure Impacts

Power	Powerline infrastructure continues to be compromised (4) 115KV and 230 KV power lines threatened Western Area Power Administration (5)
Communications	No impacts listed
Communications	Shasta Bally repeater has limited operability due to damage from the fire. This repeater is critical to the public safety radio system. A mobile repeater is being placed on Sugarloaf.(8) The South Fork Repeater site has sustained major damage. This site hosts the local AM/FM radio stations and local TV, including local news. Other components damaged at the site include AT&T cellular site. (8)

	Area	Status
Water	Whiskeytown National Recreation Area headquarters facility	Do Not Drink Notice (9)
	A major portion of the fire is a watershed for either the Sacramento River, Whiskeytown Lake, Trinity Lake or Shasta Lake. All of these provide water for consumption and will be effected with the winter rains. (5) The Iron Mountain Mine situation has been mitigated. (5)	

Structures	Threatened	Damaged	Destroyed
Residential	-	190 (1,5)	1,079 (1,5)
Mixed Residential/Commercial	-	2 (5)	-
Commercial	-	26 (1,5)	22 (1,5)
Other Structures	-	61 (5)	503 (1,5)
Total	None (5)	279	1,604 (3)
Maps	Structure Status Information Map: http://calfire-forestry.maps.arcgis.com/apps/PublicInformation/index.html?appid=5bbcbcd430ad45e5a38e6be155ef5fec Carr Fire Areal Views Map: http://redding.maps.arcgis.com/apps/webappviewer/index.html?id=2b5e92ade03a40cb8e1b3f1027245c0f		

Inspections are complete within the current fire perimeter. (5)

Injuries / Fatalities	Civilian	Firefighter
Injuries	-	1 (5)
Fatalities	5 (4)	3 (1,4,5)

Community Infrastructure Threats

Post Offices	Post Office - Closed	Alternate Location
	French Gulch Post Office, 14200 Main St., 96033 (10)	Downtown Redding Post Office, 1647 Yuba St., 96001 (10)

Recovery

The recovery information listed here is specific to the Carr. See the General Recovery Resources section for additional resources and links.

Disaster Assistance Center	Disaster Assistance Center, Old Kmart Building, 2685 Hilltop Rd, Redding, CA 96003 (2) • Open daily from 9:00am - 7:00pm (2)
Missing & Found Pets	Haven Humane Society Facebook: https://www.facebook.com/HavenHumaneSociety/

Continued on Next Page

Carr Fire - Shasta County (continued)

<p>Disaster Assistance</p>	<p>American Red Cross: All evacuees, or those who have damage to homes, are encouraged to call Red Cross at 844-236-0153. The Red Cross will help set up a claim and direct to programs that can help.</p> <p>FEMA: www.disasterassistance.gov or call the Disaster Survivors Line at 800-621-3362. Resources may include temporary shelter, food, first aid, low-interest loan for home or business repairs (through the Small Business Administration), and other disaster assistance.</p> <p>Deadlines</p> <ul style="list-style-type: none"> • Deadline to apply for FEMA Individual Assistance is October 3, 2018 (9) • Deadline for filing for Disaster Unemployment Assistance with the California Employment Development Department is September 10, 2018 (9) <p>FEMA Individual Assistance:</p> <ul style="list-style-type: none"> • Individual Assistance Applications Approved: 237 (11) • Total Individual & Households Program Dollars Approved: \$3,294,593.65 (11)
<p>Returning Residents</p>	<p>Shasta County Guidance on Health and Safety Precautions for Re-Entry and Clean Up After Fire: https://www.co.shasta.ca.us/docs/libraries/resource-management-docs/ehd-docs/shasta-county-health-and-safety-precautions-for-re-entry-and-cleanup-after-fire.pdf?sfvrsn=8dc9fb89_0</p> <p>Shasta County Food Safety During Temporary Power-Outages: https://www.co.shasta.ca.us/docs/libraries/resource-management-docs/ehd-docs/food-safety-for-private-homes-during-temporary-power-outages.pdf?sfvrsn=69cafb89_0</p>
<p>Distribution Center</p>	<p>Red Cross Service Center</p> <ul style="list-style-type: none"> • Opened 8/10 and will be open for the next few days, 9am-7pm, at the Mt. Shasta Mall: 1403 Hilltop Dr, Redding (12) <p>Salvation Army Distribution Center</p> <ul style="list-style-type: none"> • Continuing to be available to assist with items (such as clothing, pillows, water, etc.) on a case-by-case basis at their office at 2691 Larkspur Ln, Redding. (12) <p>Lions Fire Relief Center</p> <ul style="list-style-type: none"> • Distribution Center providing food, water, blankets, personal care/hygiene items, and fire clean-up supplies, open seven days a week, 9am-6pm at 110 Hartnell Ave., #60, Redding (12)
<p>Food Support</p>	<p>Disaster CalFresh Plan submitted for Shasta County, with proposed start date for the one-week application period of August 22, 2018 (9)</p>
<p>Damage Assessment</p>	<p>Structure Status Information Map: http://calfire-forestry.maps.arcgis.com/apps/PublicInformation/index.html?appid=5bbcbcd430ad45e5a38e6be155ef5fec</p> <p>Shasta County Assessor Website: https://www.co.shasta.ca.us/index/assessor_index/carr-fire-page</p> <p>County Assessor’s dashboard of homes that have been assessed to date: https://dtsc.maps.arcgis.com/apps/opsdashboard/index.html#/ac68be696d0d46688349a9d31c62205f</p> <p>Individuals who have suffered fire damage are encouraged to contact the Assessor’s Office at 225-3600 and obtain a “Claim for Disaster Relief” application or visit our website at: http://www.co.shasta.ca.us/index/assessor_index/assessor_forms.aspx to print the form.</p>

Continued on Next Page

Carr Fire - Shasta County (continued)

Recovery (continued)

<p>Debris Removal City of Redding</p>	<p>Under a local health emergency declaration, no Carr fire debris can be removed before being inspected by the California Department of Toxic Substances Control (DTSC) for hazardous material. (13)</p> <p>Absolutely no fire waste should be placed in the cans to be picked up curbside. (13)</p> <p>The Transfer Station is currently accepting normal garbage as well as food waste with no extra charges. (13)</p> <p>Description of Phase 1 and Phase 2 Debris Clean Up Process: https://www.cityofredding.org/Home/Components/News/News/6712/18?backlist=%2fdepartments%2fdevelopment-services%2fbuilding</p>
<p>Debris Removal Shasta County</p>	<p>No fire related debris shall be removed without prior inspection by the U.S. EPA, California Department of Toxic Substances Control or the Shasta County Environmental Health Division. (14)</p> <p>Fire-damaged motor vehicles are not accepted for disposal at West Central Landfill. call Northstate Recycling, 530-243-4780, or one of the area's wrecking yards for available disposal/recycling options. (14)</p> <p>Asbestos and Hazardous Waste Service Providers: https://www.co.shasta.ca.us/docs/libraries/resource-management-docs/ehd-docs/shasta-county-asbestos-and-hazardous-waste-service-providers--revised.pdf?sfvrsn=5fc0fb89_0</p> <p>Health & Safety Concerns for property Cleanup: https://www.co.shasta.ca.us/docs/libraries/resource-management-docs/ehd-docs/shasta-county-health-and-safety-concerns-for-property-cleanup_revised.pdf?sfvrsn=f7c7fb89_0</p> <p>West Central Landfill - Guidelines for Disposal of Wildland Fire-Generated Waste: https://www.co.shasta.ca.us/docs/libraries/resource-management-docs/ehd-docs/wcl-fire-generated-debris-waste-acceptance-policy-final-june-2018.pdf?sfvrsn=84cdfb89_2</p>
<p>Recovery Resource Lists</p>	<p>NorCal 2-1-1: http://211norcal.org/resources-for-evacuees/</p> <p>Carr Fire Recovery (Shasta County and the City of Redding): https://stories.opengov.com/reddingca/published/bDZJVvdJK</p> <p>Redding Chamber of Commerce - Resources for Businesses Impacted by Wildfires: https://gallery.mailchimp.com/17110a9cb1f597d7ae2c4df19/files/59460443-bdc3-42c6-8d71-43871568628a/Resources_for_Businesses_Impacted_by_Wildfires_July_2018.pdf</p> <p>#StrongerThanCarr: https://strongerthancarr.com</p>

Additional Information Sources

<p>Cal Fire</p>	<p>Cal Fire Carr Fire Information Line : (530) 225-2510</p> <p>Carr Fire Fatality Information Line: (530) 734-8762</p> <p>Cal Fire Carr Fire Maps: http://cdfdata.fire.ca.gov/incidents/incidents_details_maps?incident_id=2164</p> <p>Cal Fire Carr Fire News Releases Sign-up (Constant Contact Form): https://visitor.r20.constantcontact.com/manage/optin?v=001uWnjXQrYldC7E8KAawvX0dCXUeXRj0a6f7lLMElwU5YeTfUg2D7lqgibRXyLgAPNUX2C9sYfN_cXRXolu5IzVvk3xwzD9Jxyl7iEqwBOn6yo%3D</p>
<p>Cal OES</p>	<p>Business Operations Center: BusinessOp@caloes.ca.gov (sending out morning and evening sit reps)</p>

Continued on Next Page

Carr Fire - Shasta County (continued)

Additional Information Sources (continued)

Shasta County	<p>Nixle Alert Feed for the county: https://local.nixle.com/county/ca/shasta/ (NOTE - not actively being used for the fire)</p> <p>NOAA Watches & Warnings for the County: https://alerts.weather.gov/cap/wwaatmget.php?x=CAC089&y=1</p> <p>Shasta County Code Red Alert Sign-Up: https://public.coderedweb.com/CNE/en-US/BFBDC5E730B</p> <p>Shasta County Sheriffs Office Facebook: https://www.facebook.com/Shasta-County-Sheriffs-Office-1527637610823075/</p> <p>Shasta County Sheriffs Office Website: https://www.co.shasta.ca.us/index/sheriff_index.aspx</p> <p>Shasta County Environmental Health Division, 1855 Placer Street, Suite 201 Redding, CA 96001; Telephone (530) 225-5787</p>
City of Redding	<p>City of Redding Facebook: https://www.facebook.com/CityOfRedding/</p> <p>eNotification Alerts: https://www.cityofredding.org/i-want-to-/apply-register-for/enotification/-selectview-0</p>
Trinity County	<p>NOAA Watches & Warnings for the County: https://alerts.weather.gov/cap/wwaatmget.php?x=CAC105&y=1</p>

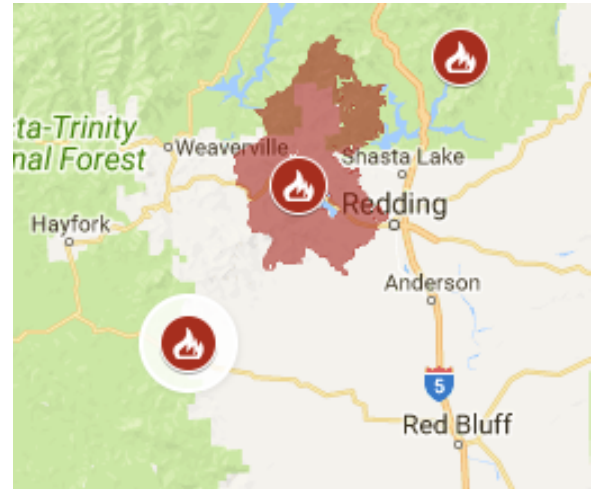
Information Sources

- 1) Cal Fire Incident Page - Carr Fire: http://www.fire.ca.gov/current_incidents/incidentdetails/Index/2164 (Updated: August 21, 2018 7:15 am)
- 2) Cal Fire Incident Update - Carr Fire: http://cdfdata.fire.ca.gov/admin8327985/cdf/images/incidentfile2164_4070.pdf (Updated: August 21, 2018 7:00am)
- 3) National Interagency Coordination Center Incident Management Situation Report Thursday, August 21, 2018 - 0530 MT
- 4) Cal OES Daily Situation Brief - August 21, 2018
- 5) Northern California Geographic Coordination Center Short Briefing 209 Summary Report - Carr Fire (Updated: August 21, 2018 5:35am)
- 6) Cal OES Daily Situation Brief - August 16, 2018
- 7) Cal OES Business Operations Center Evening Report - August 12, 2018 4:00pm
- 8) Northern California Geographic Coordination Center - News & Notes - Carr Fire: <https://gacc.nifc.gov/oncc/news.php> (Updated: August 16, 2018 7:00pm)
- 9) Cal OES Business Operations Center Morning Report - August 16, 2018
- 10) USPS Service Disruptions: <http://about.usps.com/news/service-alerts/business-weather-updates.htm> (Updated: August 10, 2018 7:00am, no new update since this time)
- 11) FEMA - California Wildfires And High Winds (DR-4382): <https://www.fema.gov/disaster/4382> (Viewed: August 21, 2018 4:14pm)
- 12) NorCal 211 - Carr Fire Incident Resources: <http://211norcal.org/resources-for-evacuees/> (Viewed: August 17, 2018 12:54am)
- 13) City of Redding News - City of Redding debris removal and cleanup: <https://www.cityofredding.org/Home/Components/News/News/6712/18?backlist=%2fdepartments%2fdevelopment-services%2fbuilding> (Updated: August 2, 2018 5:24pm)
- 14) Shasta County Department of Resource Management Environmental Health Division - Health and Safety Concerns for Property Cleanup: https://www.co.shasta.ca.us/docs/libraries/resource-management-docs/ehd-docs/shasta-county-health-and-safety-concerns-for-property-cleanup_revised.pdf?sfvrsn=f7c7fb89_0 (Viewed: August 3 1:05am)

Gorge Fire - Shasta County

– Newly Added Fire –

Acres Burned [Change]	% Contained [Change]
155 (1)	90% (1)
Start Date	Estimated Containment Date
August 19, 2018 (1)	None listed
Lead Agency(ies)	
CAL FIRE Shasta-Trinity Unit (1)	
Initial Location	
off Highway 36 west and Beegum Gorge road, Platina area (1)	



Structures Threatened	Structures Destroyed
None listed	None listed
Evacuations	
None listed	
Other Infrastructure Threats	
Highway 36 through the fire area is now open to all traffic. (1)	
Projected Fire Activity	
Not listed	
Cause of the Fire	
Not listed	
Hashtags	
#gorgefire	

Fire Maps
No perimeter map available
Impacted Zip Codes: 96047, 96076
Nearby Zip Codes: n/a

Information Sources

- 1) Cal Fire Incident Page - Gorge Fire: http://www.fire.ca.gov/current_incidents/incidentdetails/Index/2221 (Updated: August 21, 2018 7:25 am)

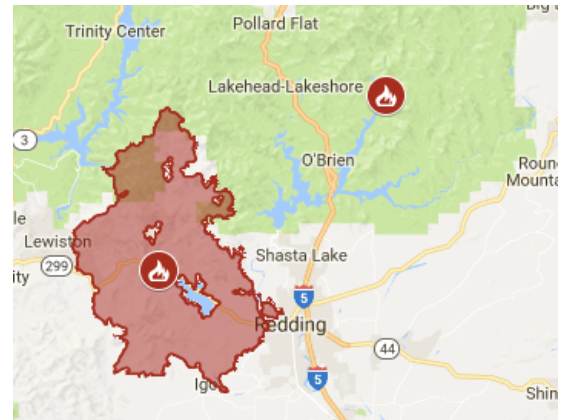
Hirz Fire - Shasta County

Acres Burned [Change]	% Contained [Change]
17,467 (2) [+7.704]	17% (2) [+10%]

Start Date	Estimated Containment Date
August 9, 2018 (1)	September 1, 2018 (2,4,5)

Lead Agency(ies)
Northern CA Interagency Incident Management Team 1

Initial Location
off Gilman & Moore Creek Campground, east of Lakehead (1); 18 miles northeast of Redding, CA (2)



Projected Fire Activity

Last night, fire was active on the North East side of the fire. The fire is active along the western edge from the Bucks Peak north along Middle Salt Creek, and on the northern edge north of Nawtawaket mountain. Currently the fire is spreading mostly through rolling debris. Weather conditions are expected to change today becoming less stable above the fire, which could increase fire behavior. (3)

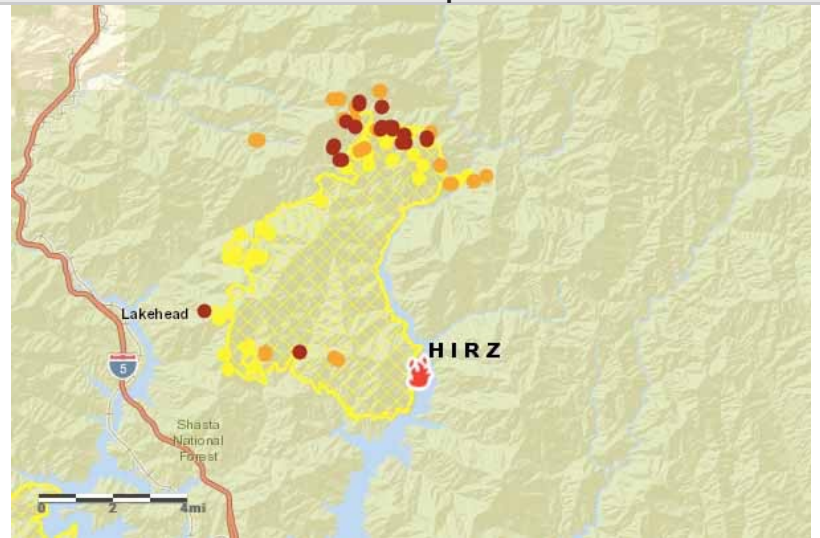
As the fire progresses to the north, the terrain becomes more difficult with less access along road systems. (5)

The fire is moving north in Winniwaket Creek and backing into Tuna Creek. (2)

Cause of the Fire
Human (5)

Hashtags
#HirzFire

Fire Maps



Source: [National Interagency Fire Center Map \(Aug 21, 2018\)](#)

Impacted Zip Codes: 96051, 96011

Nearby Zip Codes: 96003, 96017, 96070

Fire Information Line: 530-628-0039 7am-7pm (2)

Additional Maps: <https://inciweb.nwcg.gov/incident/maps/6116/>

Evacuations

Mandatory Evacuations	Residents of Old Mill Road, Bonnie Vista Lane, Top of the Hill Trail, Hirz Mountain Road, the north side of Gilman Road, and the Bollibokka Fishing Club (3)
-----------------------	--

Future Threats	72 hrs: Fire could impact communities along the Upper Sacramento River to the north towards Castle Crags State Park, LandVest Timber Lands, Hancock lands, Hearst lands, and the McCloud River Fishing Club below McCloud Reservoir. (5)
----------------	--

Continued on Next Page

Hirz Fire - Shasta County

Road Closures

Soft Closures: Gilman Road will have a soft closure in place for the area between the Old Mill Road intersection and the McCloud River Bridge. Residents who live south of Gilman Road within the soft closure area, who have not been notified to evacuate, will be allowed to continue accessing their property. (3)

Infrastructure Impacts

Power	None listed
-------	-------------

Water	None listed
-------	-------------

Structures	Threatened	Damaged	Destroyed
Residential	110 (5)	None (5)	None (5)
Other Structures	50 (5)	None (5)	None (5)
Total	160	36	None (4)

Community Meeting

Wednesday, August 22th at 6pm at the Lakehead Lion's Club, 20814 Mammoth Dr., Lakehead, CA (3)

Information Sources

- 1) Cal Fire Incident Page - Hirz Fire: http://www.fire.ca.gov/current_incidents/incidentdetails/Index/2206 (Updated: August 16, 2018 9:05 am)
- 2) InciWeb Incident Page - Hirz Fire: <https://inciweb.nwcg.gov/incident/6116/> (Updated: August 21, 2018 7:05am)
- 3) InciWeb - Hirz Fire Update August 21, 2018 morning: <https://inciweb.nwcg.gov/incident/article/6116/46360/> (Updated: August 21, 2018 7:00am)
- 4) National Interagency Coordination Center Incident Management Situation Report Thursday, August 21, 2018 - 0530 MT
- 5) Northern California Geographic Coordination Center Short Briefing 209 Summary Report - Hirz Fire (Updated: August 21, 2018 5:54am)

River Fire - Tulare County

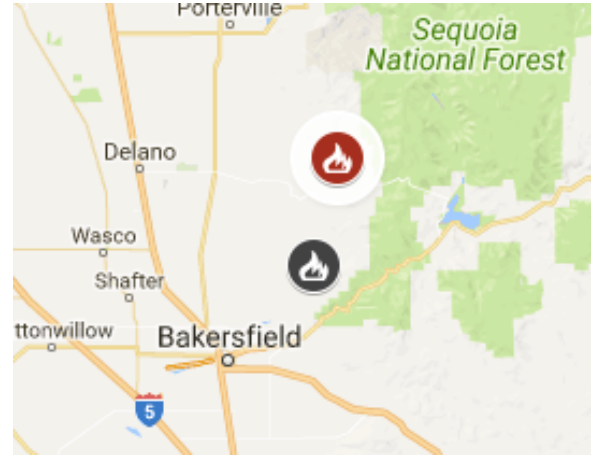
— FINAL —

Acres Burned [Change]	% Contained [Change]
668 (1) [-2]	100% (1) [+55%]

Start Date	Estimated Containment Date
August 15, 2018 (1)	-

Lead Agency(ies)
CAL FIRE Tulare Unit (1)

Initial Location
Old Stage Rd and White River Rd, 20 miles southeast of Porterville (1)



Structures Threatened	Structures Destroyed
None listed	None listed

Evacuations
None listed

Other Infrastructure Threats
None listed

Projected Fire Activity
None listed

Cause of the Fire
None listed

Hashtags
#RiverFire
<i>Note: this hashtag also refers to the River Fire in Mendocino County</i>

Fire Maps
No Map Available
Impacted Zip Codes: 93257, 93287
Nearby Zip Codes: -

Information Sources

- 1) Cal Fire Incident Page - River Fire, Tulare County: http://www.fire.ca.gov/current_incidents/incidentdetails/Index/2214 (Updated: August 19, 2018 8:19 pm)

Donnell Fire - Tuolumne County

Acres Burned [Change]	% Contained [Change]
35,000 (1) [+4,921]	51% (1) [+21%]

Start Date	Estimated Containment Date
August 1, 2018 (1)	September 1, 2018 (1,2)

Lead Agency(ies)
Stanislaus National Forest (5)

Initial Location
Donnell Lake (1)

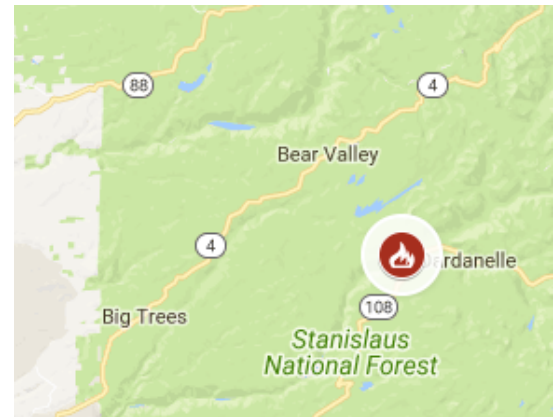
Structures Threatened	Structures Destroyed
220 (1,3)	54 structures, 81 minor structures (1,2,3)

Other Infrastructure Threats
None listed

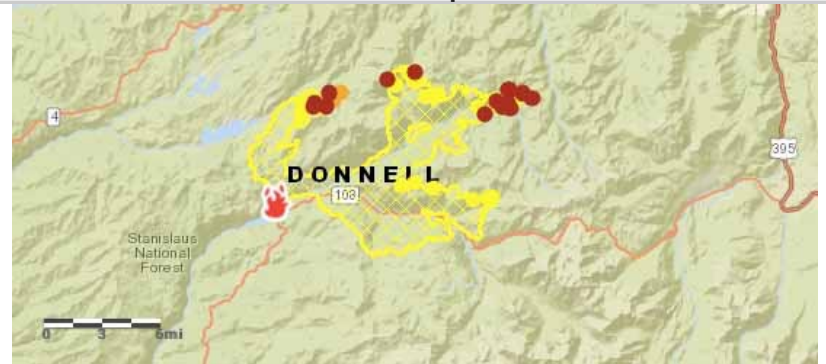
Cause of the Fire
Not listed

Proclamations
08/05/18, a Proclamation was received from Tuolumne County due to the Donnell Fire. No assistance is being requested at this time. (4)
08/08/18, a Local Health Emergency Proclamation was received due to impacts from the Donnell Fire. (4)

Hashtags
#DonnellFire



Fire Maps



Source: [National Interagency Fire Center \(August 21, 2018\)](#)

Impacted Zip Codes: 95223, 95314, 95364

Nearby Zip Codes: -

Fire Information Line: (209) 536-5388

Fire Information Email: donnellfirestf1918@gmail.com

Fire Maps: <https://inciweb.nwcg.gov/incident/maps/6092/>

Projected Fire Activity

Fire activity will be active this afternoon as increased, dry southwest winds find alignment within upper Clarks Fork into Boulder and Disaster Creek drainages, as well as within Slaughter and Jenkins drainages where spread will be driven by both fuels and terrain. (1)

Fire does have potential to flank the Spicer Meadow Reservoir along the eastern edge and move further north into federally designated Wilderness. Dry, warm conditions may cause challenging conditions for several portions of the fire, potentially impacting infrastructure and recreational improvements in the Middle Fork Stanislaus River, upper Clarks Fork, Bennett Juniper/Sardine, and Haypress Meadow and surrounding wilderness areas including the PCT to north of Boulder and Disaster creeks. (1)

Short range spotting contributed to moderate fire growth over more sparse vegetation in the higher terrain (3)

Continued on Next Page

Donnell Fire - Tuolumne County

Evacuations

Mandatory: Still in effect along Highway 108 from Eagle Meadow Road to Kennedy Meadows (all residences and campgrounds) as well as all along Eagle Meadow Road (5N01) and the Clark Fork Road area. No new mandatory evacuations have been ordered. (1)

Advisory: Mill Creek area (1)

Road Closures

Highway 108 has been opened to through traffic but the Clark Fork Road and Forest Road 5N01 remain closed. (1)

Information Sources

- 1) InciWeb Incident Page - Donnell Fire: <https://inciweb.nwcg.gov/incident/6092/> (Updated: August 21, 2018 8:57am)
- 2) National Interagency Coordination Center Incident Management Situation Report Thursday, August 21, 2018 - 0530 MT
- 3) Southern California Area Coordination Center Situation Report - Donnell Fire (August 20, 2018 5:36pm)
- 4) Cal OES Daily Situation Brief - August 21, 2018
- 5) Southern California Geographic Coordination Center - News & Notes - Donnell Fire: <https://gacc.nifc.gov/oscc/news.php> (Updated: August 21, 2018 8:05am)

Downloadable Map Files

File	Link	Download Guide #	File Types
Air Quality Index (AQI)	https://airnow.gov/index.cfm?action=google_earth.index	B	KML Only
Cal Fire 2018 Statewide Fire Map	https://www.google.com/maps/d/viewer?mid=1HacmM5E2ueL-FT2c6QMVzoAmE5M19GAf	A	KML & KMZ
NASA FIRMS Map (fire activity)	https://firms.modaps.eosdis.nasa.gov/active_fire/#firms-shapefile	C	Shape & KML
Mendocino Complex Map	https://www.google.com/maps/d/viewer?mid=1rXgr1EznF_I0dkcxvH221qF5l29BGLWM&ll=39.14640142823378%2C-122.79371845039066&z=10	A	KML & KMZ
Cranston Fire USGS Post-Fire Debris-Flow Hazards Map	https://landslides.usgs.gov/hazards/postfire_debrisflow/detail.php?objectid=203	D	Shape & Geodatabase
Georges Fire USGS Post-Fire Debris-Flow Hazards Map	https://landslides.usgs.gov/hazards/postfire_debrisflow/detail.php?objectid=193	D	Shape & Geodatabase
Valley Fire USGS Post-Fire Debris-Flow Hazards Map	https://landslides.usgs.gov/hazards/postfire_debrisflow/detail.php?objectid=195	D	Shape & Geodatabase
Klamathon Fire USGS Post-Fire Debris-Flow Hazards Map	https://landslides.usgs.gov/hazards/postfire_debrisflow/detail.php?objectid=199	D	Shape & Geodatabase

Download Instructions

Guide #	Instructions
A	<ol style="list-style-type: none"> 1) click on the three dots in the red header bar for the more options dropdown menu 2) select "Download KML" 3) Select whether you want a KML or KZM File
B	Step 1 under Instructions for Google Earth has the "click here" download link
C	Select the desired map file type and select the desired time period under "USA (Conterminous) and Hawaii"
D	Scroll to the bottom of the page and select the desired file format under downloads.

Guide for Overlaying Zip Code Data in Google Earth

After opening KML or KZM file in Google Earth activate the Postal Code Boundary layer to see the zip codes. Postal Code Boundary layer is located in Google Earth under Layers -> More -> US Government -> Postal Code Boundary. Tip: to make it easier to see the zip code boundaries, turn off the roads layer.

General Recovery Resources

Missing People & Check-Ins	Red Cross Safe & Well: https://safeandwell.communityos.org/cms/index.php
Volunteering	California Volunteers Current Incidents Page: https://californiavolunteers.ca.gov/current-disasters/
Donations - Financial	List of Organizations coordinating financial contribution: https://californiavolunteers.ca.gov/current-disasters/
Donations - Goods	<p><i>Please do not send in-kind donations without first coordinating with the receiving agency. Unsolicited in-kind donations strain the system.</i></p> <p>California Volunteers Current Incidents Page: https://californiavolunteers.ca.gov/current-disasters/</p> <p>Cal OES Business Operations Center - coordinating larger donations and support from the private sector: businessOP@caloes.ca.gov</p>
Coping with Disaster Resources	<p>National Disaster Distress Helpline, 1-800-985-5990 or text TalkWithUs to 66746, available 24 hours a day, seven days a week is a hotline dedicated to providing immediate crisis counseling for people who are experiencing emotional distress related to any natural or human-caused disaster. https://www.samhsa.gov/find-help/disaster-distress-helpline</p> <p>Parent Guidelines for Helping Children Impacted by Wildfires: https://www.nctsn.org/sites/default/files/resources//parents_guidelines_for_helping_children_impacted_by_wildfires.pdf</p> <p>US Department Health & Human Services: Tips for Survivors of a Traumatic Event Managing Your Stress: https://store.samhsa.gov/shin/content//NMH05-0209R/NMH05-0209R.pdf</p> <p>National Institute of Mental Health: Coping with Traumatic Events: https://www.nimh.nih.gov/health/topics/coping-with-traumatic-events/index.shtml</p> <p>FEMA - Coping with Disaster: https://www.fema.gov/coping-disaster</p>
Debris Removal	<p>State/Federal Wildfire Debris Removal Program Eligibility Chart: https://www.co.shasta.ca.us/docs/libraries/resource-management-docs/ehd-docs/State-Federal-Wildfire-Debris-Removal-Program.pdf</p> <p>California Wildfires Household Hazardous Waste and Consolidated Debris Removal Programs Fact Sheet: https://www.co.shasta.ca.us/docs/libraries/resource-management-docs/ehd-docs/fact-sheet-hhw-and-debris-removal.pdf</p> <p>EPA - Dealing with Debris and Damaged Buildings: https://www.epa.gov/natural-disasters/dealing-debris-and-damaged-buildings</p> <p>Cal EPA - Fact Sheet: Protecting Public Health from Home and Building Fire Ash: http://calepa.ca.gov/wp-content/uploads/sites/34/2016/10/Disaster-Documents-FireAsh.pdf</p> <p>Department of Toxic Substances Control - Handling Ash, Debris and other Hazardous Materials from Burned Structures: http://www.dtsc.ca.gov/HazardousWaste/upload/Fire_Emergency_Guidance_FS_1.pdf</p> <p>Safe Cleanup of Fire Ash: https://www.arb.ca.gov/carpa/toolkit/emerg-response/safe-cleanup-fire-ash.pdf</p>
Food Waste	Refrigerated Foods and Power Outages: When to Save and When to Throw Out: http://www.mariposacounty.org/DocumentCenter/View/66552

Continued on Next Page

General Recovery Resources

Guides - Employee Safety / Employer Responsibilities	<p>CA Department of Industrial Relations - Worker Safety and Health During Fire Cleanup: https://www.dir.ca.gov/dosh/wildfire/Worker-Health-and-Safety-During-Fire-Cleanup.html</p> <p>CA Department of Industrial Relations - Respiratory Protection During Fire Cleanup: https://www.dir.ca.gov/dosh/Fire_Resp_Protection.html</p> <p>CA Department of Industrial Relations - Personal Protective Equipment During Fire Cleanup: https://www.dir.ca.gov/dosh/wildfire/Protective-Equipment-During-Fire-Cleanup.html</p>
Insurance	<p>California Department of Insurance - Wildfire Resources Website: http://www.insurance.ca.gov/01-consumers/140-catastrophes/WildfireResources.cfm</p> <p>California Department of Insurance - Resources to Help Recent Wildfire Victims: https://www.insurance.ca.gov/01-consumers/140-catastrophes/WildfireResources.cfm</p>
Replacing Vital Records	<p>USA.gov Replacing Your Vital Records: https://www.usa.gov/replace-vital-documents</p>
Disaster Assistance	<p>USDA Assistance for Rural Homeowners and Rental Tenants and Rural Communities: https://www.co.shasta.ca.us/docs/libraries/resource-management-docs/ehd-docs/ca-disasterresourcesstatewide.pdf?sfvrsn=66cefb89_0</p>
Unemployment Assistance	<p>California Employment Development Department (EDD), provides temporary unemployment benefits to people whose jobs or work hours were directly impacted by the fires. https://www.edd.ca.gov/about_edd/disaster_related_services.htm</p> <p>Disaster Unemployment Assistance: https://www.edd.ca.gov/unemployment/Disaster_Unemployment_Assistance.htm</p>
Recovery Resource Lists	<p>Cal OES Statewide Wildfire Recovery Resources: http://wildfirerecovery.org</p>

Wildfire Resource Links

National Significant Wildland Fire Potential Outlook

https://www.predictiveservices.nifc.gov/outlooks/monthly_seasonal_outlook.pdf

Cal Fire Incident Page

http://www.fire.ca.gov/current_incidents

National Interagency Coordination Center Daily Situation Report (Fire)

<https://www.nifc.gov/nicc/sitreprt.pdf>

CalFire 2018 Wildfire Map

<https://www.google.com/maps/d/viewer?mid=1HacmM5E2ueL-FT2c6QMVzoAmE5M19GAf&hl=en&ll=37.421476393980626%2C-119.27200899999997&z=6>

National 7-Day Significant Fire Potential Map

<http://psgeodata.fs.fed.us/forecast/#/outlooks?state=map>

Air Quality Conditions - Fires Map

https://airnow.gov/index.cfm?action=topics.smoke_wildfires

CDC Wildfire Smoke Exposure

<https://www.cdc.gov/disasters/wildfires/smoke.html>

NOAA Hazard Mapping System Fire and Smoke Product

<http://www.ospo.noaa.gov/Products/land/hms.html>

Red Cross Disaster Shelter Locations

<http://www.redcross.org/get-help/disaster-relief-and-recovery-services/find-an-open-shelter>

USGS Emergency Assessment of Post-Fire Debris-Flow Hazards

https://landslides.usgs.gov/hazards/postfire_debrisflow/

The California Resiliency Alliance is a 501c3 non-profit empowering local and regional resiliency efforts through cross-sector information sharing and partnerships. The content in this brief provided for internal use by California Resiliency Alliance members. Copyright owners retain all copyrights to material referenced.