

# Weekly Wildfire Brief

[Provide Feedback on this Report](#)

*Notice: The information in this report is subject to change and may have evolved since the compiling of this report.*

**BLUE Text** = Newly added information and information that has changed since the last wildfire brief.

**GRAY Text** = Information where nothing new has been posted since the last wildfire brief, unable to reverify the information as still being current.

## Inside this Brief:

Summary	Pg 1 - 2	Current Air Quality Map	Pg 7
State Wildfire Map	Pg 3	Wildfire Snapshot Pages	Pg 8-38
Weather Information	Pg 4	Downloadable Map Files	Pg 39
Red Flag Watches & Warnings	Pg 5	Reference Links	Pg 40
Significant Fire Potential Maps	Pg 6	(Previous Brief Published 7/31/18)	

## Wildfire Summary - August 2, 2018

*For reference: 1 sq mile = 640 acres ; 1 football field = approx 1.32 acres*

Fire	Acres Burned [Change]	% Contained [Change]	Evacuations	Structures Threatened	Structures Destroyed	Page
<b>Del Norte &amp; Siskiyou Counties</b>						
Natchez Fire	7,693 [+3,916]	15% [+5%]	YES	13	None listed	<u>8</u>
<b>Lake, Mendocino, &amp; Colusa Counties</b>						
Mendocino Complex	125,168 [+111,168]	39% [+34%]	YES	8,200	33	<u>9-13</u>
<b>Lassen County</b>						
Roxie Fire (FINAL)	167 [+0]	100% [+10%]	None	None	None	<u>14</u>
Whaleback Fire	18,726 [+10,726]	60% [+55%]	YES	460	None	<u>15-16</u>
<b>Madera County</b>						
Lions Fire	6,648 [+2,233]	60% [-32%]	None	None	None	<u>17</u>
<b>Mariposa County</b>						
Ferguson Fire	69,440 [+17,769]	41% [+11%]	YES	694	10	<u>18-20</u>
<b>Mendocino County</b>						
Eel Fire *	1,000	25%	YES	40	3	<u>21</u>
Also see Mendocino Complex, under - Lake, Mendocino, and Colusa Counties						
<b>Mono County</b>						
Hot Creek Fire *	436	95%	Lifted	None	None	<u>22</u>
Owens Fire *	312	95%	Lifted	None listed	None listed	<u>23</u>

Continued on Next Page

## Wildfire Summary (continued)

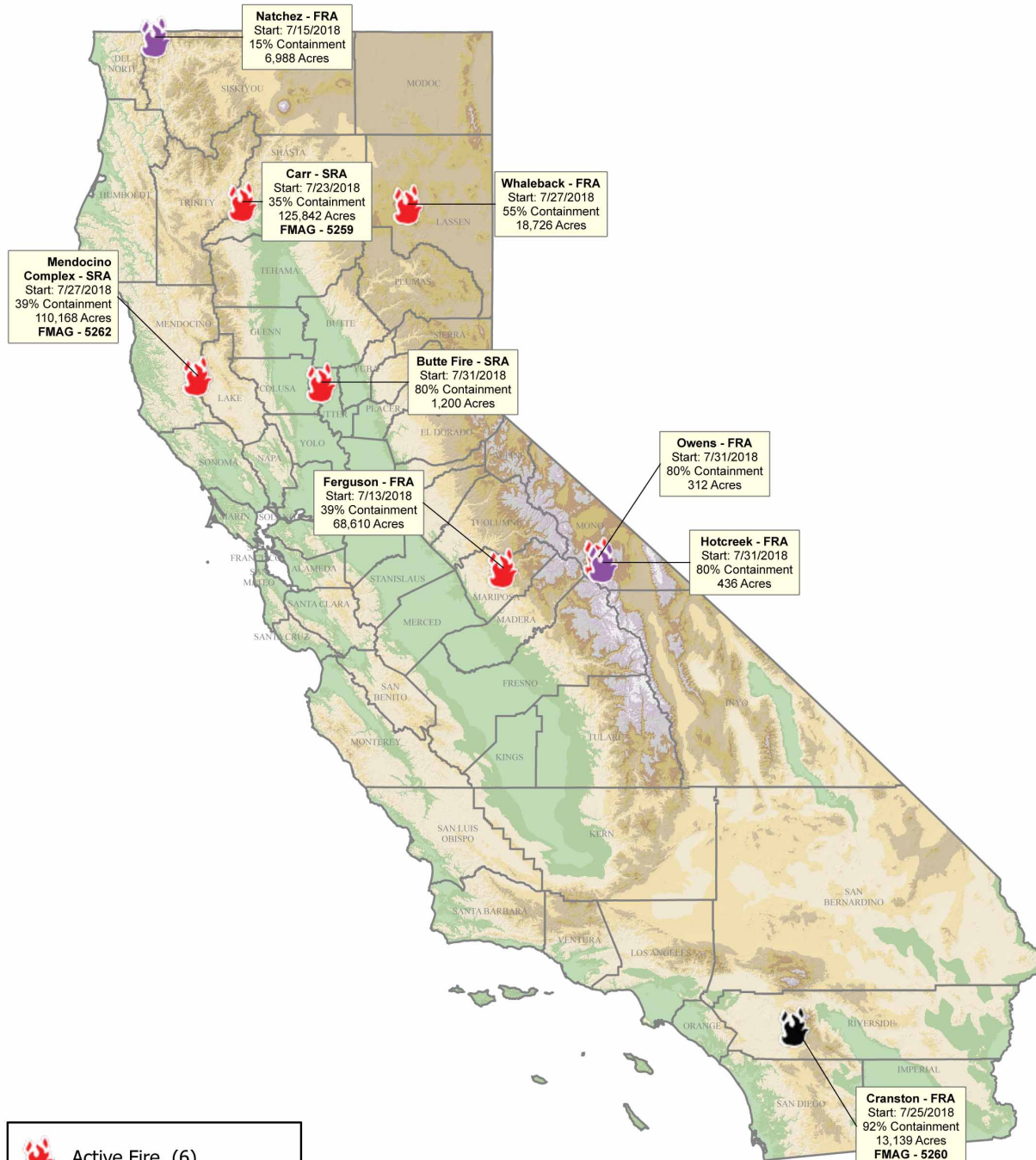
For reference: 1 sq mile = 640 acres ; 1 football field = approx 1.32 acres

Fire	Acres Burned [Change]	% Contained [Change]	Evacuations	Structures Threatened	Structures Destroyed	Page
<b>Napa County</b>						
Steele Fire (FINAL)	135 [-15]	100% [+90%]	Lifted	-	8	<u>24</u>
<b>Riverside County</b>						
Cranston Fire	13,139 [+21]	96% [+67%]	Lifted	None	12	<u>25-26</u>
Ribbon Fire (FINAL)	205 [+5]	100% [+30%]	Lifted	-	None listed	<u>27</u>
<b>San Bernardino County</b>						
Valley Fire	1,350 [+0]	30% [+1%]	None listed	None	None	<u>28</u>
<b>San Diego County</b>						
Pasquale Fire (FINAL)	365 [+0]	100% [+45%]	None	-	None	<u>29</u>
Rock Fire (FINAL)	207 [-18]	100% [+90%]	Lifted	None	None	<u>30</u>
<b>Shasta &amp; Trinity Counties</b>						
Carr Fire	126,913 [+43,113]	37% [+32%]	YES	1,358	1,553	<u>31-37</u>
<b>Sutter County</b>						
Butte Fire * (FINAL)	About 1,200	100%	Lifted	-	None	<u>38</u>



# Current Wildland Fires

as of August 02 2018 - 0800 Hours



Active Fire (6)

New Active (2)

Recently Contained (1)

LRA - Local Responsibility Area  
SRA - State Responsibility Area  
FRA - Federal Responsibility Area



QR Code

August 02 2018 - 0800 hrs  
Produced by: Cal OES GIS Division  
Source: CalOES, FAMWEB 2009, IRWIN  
Active\_Incident\Fires\Statewide\_Daily\_Fire\_Maps  
Statewide\_Daily\_Fire\_Maps.aprx

# Weather Information

Source: Cal OES Daily Situation Report - [August 2, 2018](#)

## NORTHERN CALIFORNIA

\*\*\*High Risk for Far Eastside and eastern portions of the Northern Sierra PSA's due to gusts to 35 mph and low relative humidity through Sunday\*\*\*

\*\*\* W-NW Gusts to 35 mph through Coast Range Gaps and Passes into Western Sacramento Valley during afternoons and evenings through Sunday\*\*\*

There will be little change in the weather through Friday as N. California remains in between high pressure over desert SW and a trough over the Pacific Northwest. Winds will be a tad breezier area wide under this type of pattern. The favored areas for widespread gustier SW-W wind of 20 and 30 mph will be found along and east of the Cascade-Sierra Crest. A secondary but localized area of gustier winds will be found across the coastal mountain gaps into the far western part of the Sacramento Valley during the afternoons and evenings through Friday night. Expect W-NW wind gusts between 20 to 35 mph across those areas. Minimum humidity will stay in the upper single digits and teens and humidity recovery will be mainly between 30% and 50% across the interior. Maximum temperatures will be in the 80s to low 90s across the mountains and 90s to 102 in the valleys.

Wind speeds will increase overall during the weekend with gusts between 30 to 35 mph favoring the Cascade-Sierra Crest eastward. Humidity values will moderate some while temperatures cool. A Pacific disturbance is expected to slide over Siskiyou and Modoc counties late Saturday and provide a slight chance of dry showers and thunderstorms.

High pressure is expected to build back into the region next week. Winds will begin to lessen overall and temperatures would increase with lower relative humidity.

## SOUTHERN CALIFORNIA

\*\*\*Isolated thunderstorms today, drier by the weekend\*\*\*

\*\*\*Turning breezy along the central coast, southern Santa Barbara County and Kern County Mountains Thursday\*\*\*

A slight adjustment of the upper level pattern will bring a change to a breezy and slightly cooler pattern for the weekend. The high pressure ridge which has brought hot weather for several weeks will be suppressed southward which will allow northwesterly, onshore flow to develop Friday into the weekend. This will allow temperatures to fall from the upper 90s to 105 degree range in the valleys today to the mid 90s by Saturday. Northwest winds of 15-25 mph will develop each afternoon Friday through Monday along the central coast as well as the Kern County Mountains where some gusts to 40 mph will be possible Friday afternoon. Some north winds of 10-20 mph will be possible in Santa Barbara County tonight and again Friday night. Isolated thunderstorms will occur today in the Sierras as well as the San Bernardino and Cleveland National Forests this afternoon. After today, no thunderstorms are expected until the middle of next week. The marine layer will be a bit more widespread over the weekend, but warm sea surface temperatures will keep marine layer inversions weak and quick to mix out in the morning. Further inland, expect RH to fall into the teens above 2,500 feet each afternoon Friday into early next week. Long range models indicate warmer weather will return next Tuesday with wet thunderstorms possibly arriving later in the week.

# Red Flag Warnings & Watches

## Current Red Flag Warnings & Watches



Source: <https://www.weather.gov/fire/> (August 3, 2018 3:23am)

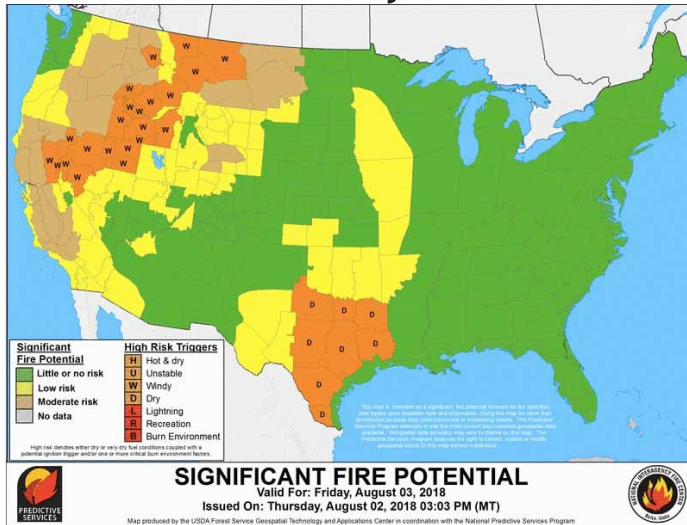
**Current Watches, Warnings or Advisories for California Link**

<https://alerts.weather.gov/cap/ca.php?x=1>

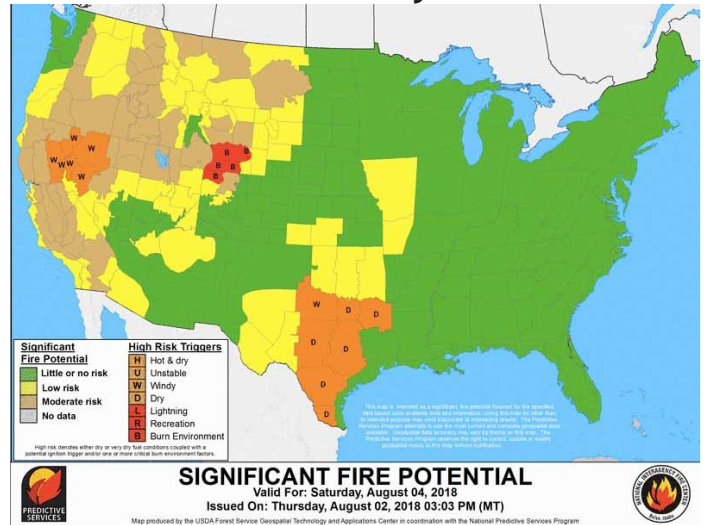


# Significant Fire Potential Maps

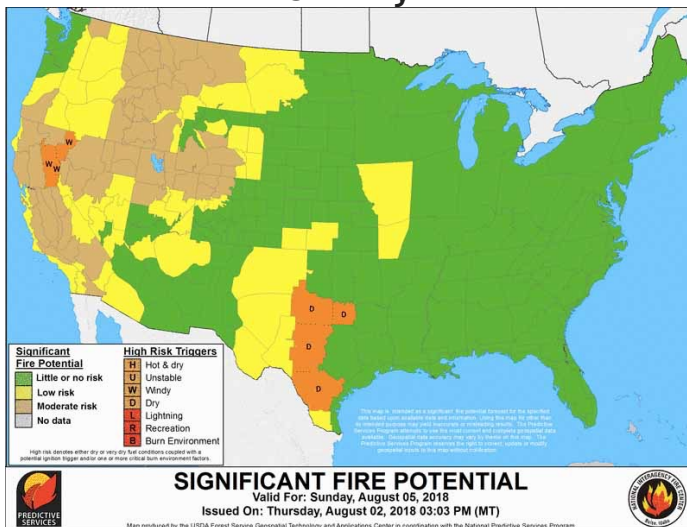
Friday



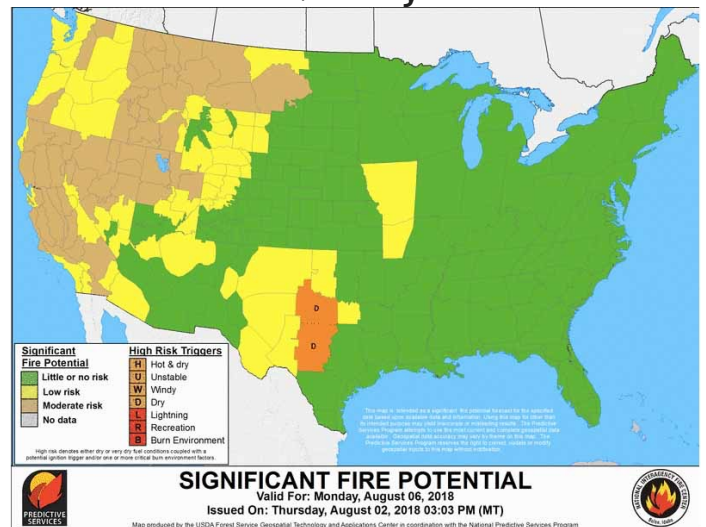
Saturday



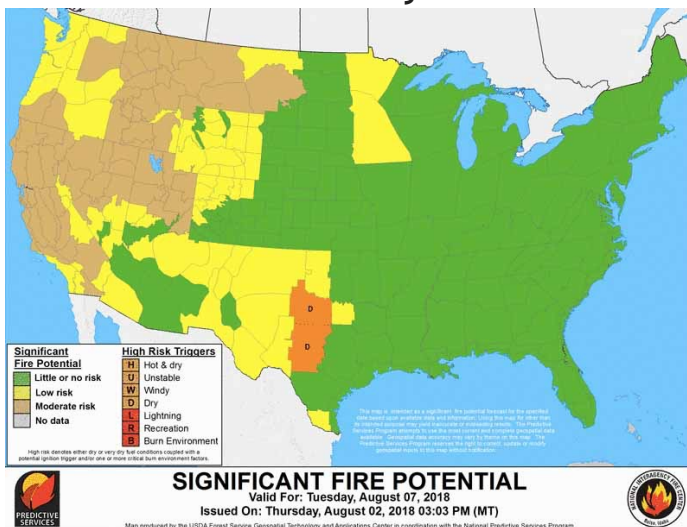
Sunday



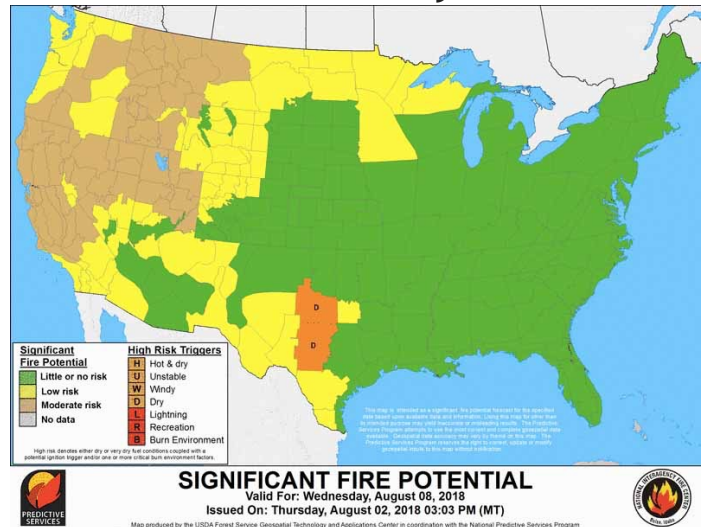
Monday



Tuesday

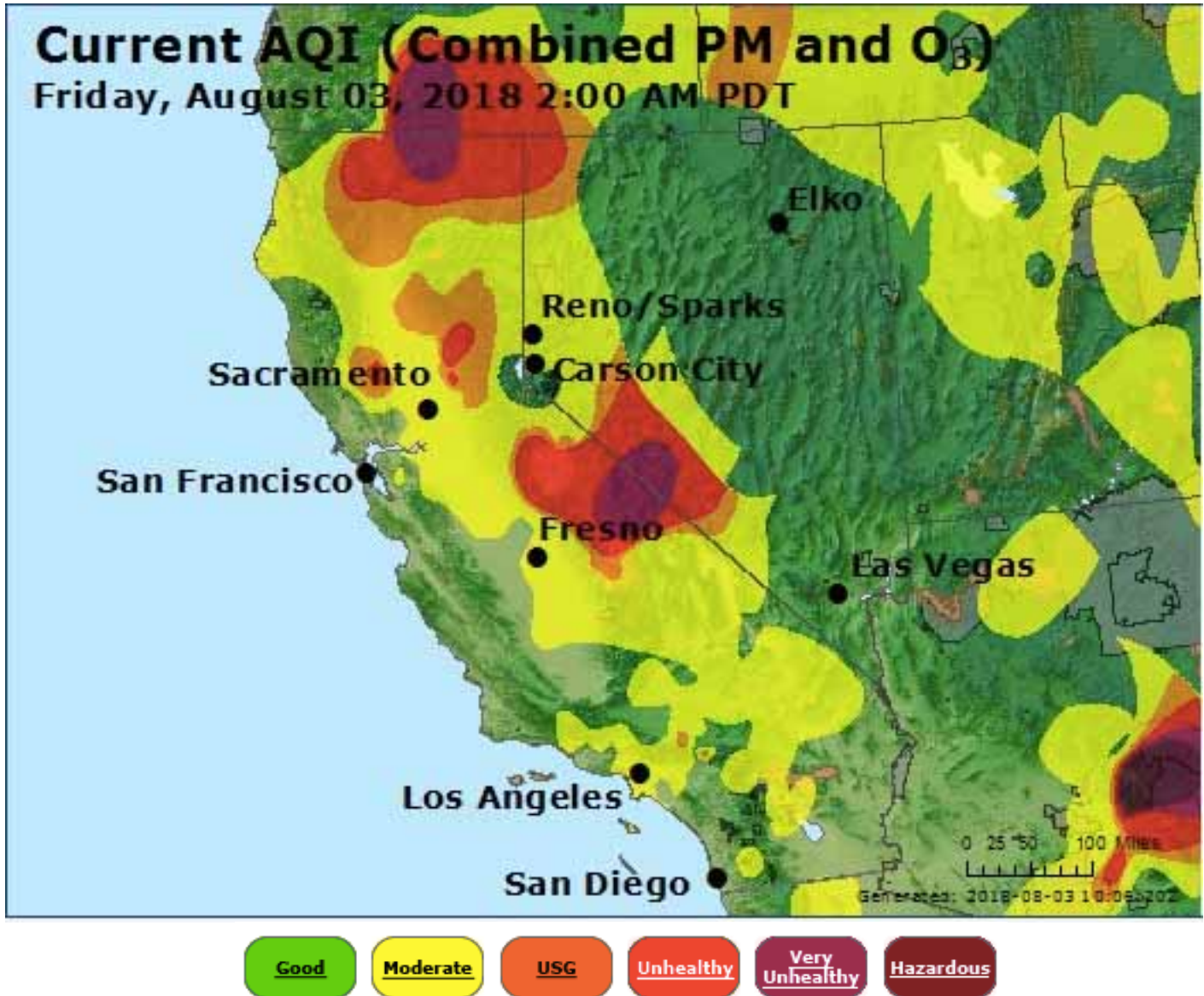


Wednesday



Source: <http://psgeodata.fs.fed.us/staticmap.html>

## California Current Air Quality Map



Source: [https://www.airnow.gov/index.cfm?action=airnow.local\\_state&stateid=5&mapcenter=0&tabs=0](https://www.airnow.gov/index.cfm?action=airnow.local_state&stateid=5&mapcenter=0&tabs=0)

Legend: AQI = Air Quality Index; PM = Particulate Matter; O<sub>3</sub> = Ozone

Air Quality Index Basics Overview: <https://airnow.gov/index.cfm?action=aqibasics.aqi>

### Guides

Tips for choosing indoor air cleaner for effective indoor smoke removal in California: <https://ww2.arb.ca.gov/news/tips-choosing-indoor-air-cleaner-effective-indoor-smoke-removal-california>

CA Department of Industrial Relations - Protecting Workers Exposed to Smoke from Wildfires: <https://www.dir.ca.gov/dosh/wildfire/Worker-Protection-from-Wildfire-Smoke.html>

Cal/OSHA Notice - Worker Health and Safety in Wildfire Regions: <https://www.dir.ca.gov/dosh/documents/Wildfire-Safety-Notice-for-Employers-Handout.pdf> (Note N95 respirator distribution site list is out of date)



# Natchez Fire - Del Norte & Siskiyou Counties

Acres Burned [Change]	% Contained [Change]
7,693 (1) [+3,916]	15% (1) [+5%]

Start Date	Estimated Containment Date
July 15, 2018 (1)	August 31, 2018 (1)

Lead Agency(ies)
U.S. Forest Service (1)

Initial Location
15 miles southeast of Cave Junction, OR (1)



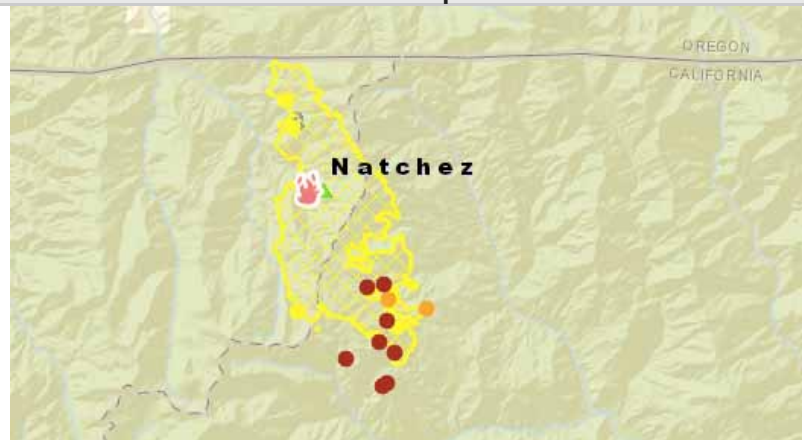
Structures Threatened	Structures Destroyed
13 (4)	None listed

Projected Fire Activity
<p><b>48 Hrs</b> - 0.25 to 0.5 mile spread into Cole Creek at south end of Natchez. Single tree and group torching, spotting with short uphill runs possible. Spotting to 0.25; greater if smoke lifts and fire gets very active. (1)</p> <p><b>72 hrs</b> - Active surface spread. During short periods where smoke clears, single tree and group torching with short crown runs possible with long range spotting. Continued concern for the possibility for increased fire behavior where wind and topographic features align. (1)</p>

Cause of the Fire
Lightning (1)

Hashtags
#NatchezFire

## Fire Maps



Source: [National Interagency Fire Center Map \(Aug 2, 2018\)](#)

**Impacted Zip Codes:** 96039

**Nearby Zip Codes:** fairly central in the impacted zip code

## Infrastructure Impacts

69kV powerlines threatened (4)

Powerlines in fire area de-energized (4)

## Evacuations

**Evacuated:** 2 homes at end of South Fork Road (2)

**Evacuation Warning:** all other residences accessed by the South Fork Road and Grayback road north of the junction of the South Fork Road and the Grayback Road. (2) The community of Sunstar (1)

## Information Sources

- 1) InciWeb Incident Page - Natchez Fire: <https://inciweb.nwcg.gov/incident/5948/> (Updated: August 2, 2018 9:49pm)
- 2) InciWeb - August 1 Natchez Fire Evacuation Update: <https://inciweb.nwcg.gov/incident/article/5948/44803/> (updated: August 1, 2018 4:00pm)
- 4) Cal OES Daily Situation Brief - August 2, 2018



# Mendocino Complex - Lake, Mendocino, Colusa Counties

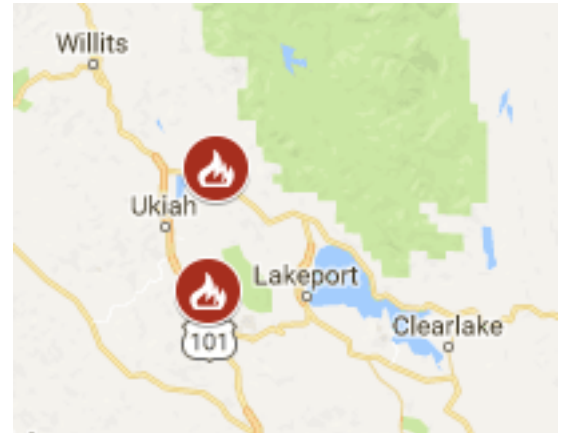
Fire	Acres Burned [Change]	% Contained [Change]
Ranch Fire	83,890 (6) [+78,890] *	33% (1,6) [+28]*
River Fire	41,278 (2,6) [+32,278]*	50% (2,6) [+45%]*
Combined	125,168 (6)	39% (6)

\* Change since last wildfire brief on July 31, 2018

Start Date	Estimated Containment Date
July 27, 2018 (1)	August 8, 2018 (3,8) August 15, 2018 (6,9)

Lead Agency(ies)
Unified command: CAL FIRE Mendocino Unit and USFS Mendocino National Forest (1)

Initial Location
Ranch Fire Highway CA-20 at MP 39, Old Lake County Highway, Blue Lake, 8 mi NE of Ukiah (6)
River Fire Old River Road, 6 miles north of Hopland (6)



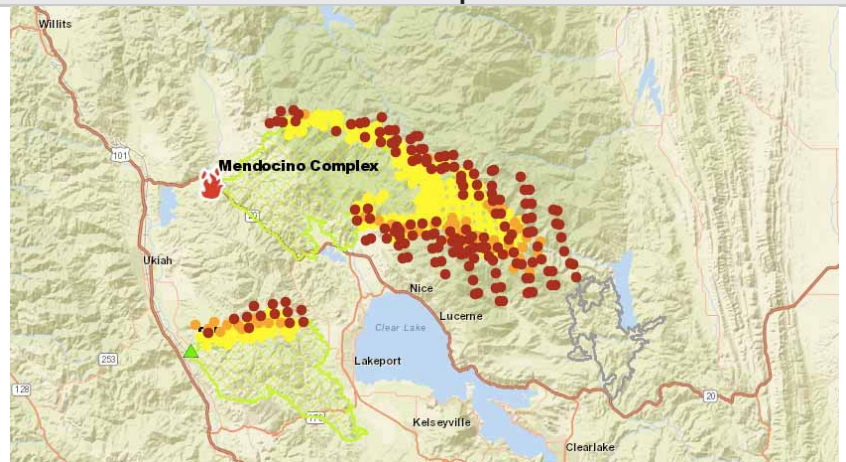
Projected Fire Activity
The fire continues to grow with increased heat and difficult terrain. Fire Personnel will continue to develop strategic plans to mitigate the Ranch Fires Northern push towards Lake Pillsbury. (6)
Extreme torching, flanking and spotting. Both fires continue to have rapid growth when aligned with fuels, topography, and wind. High temperatures, low humidity, and afternoon winds coupled with critically low fuel moistures are contributing to large fire growth. (8)

Cause of the Fire
Under Investigation (2)

State Emergency Proclamation
On 07/28/18, Governor Edmund G. Brown Jr. issued <a href="#">Emergency Proclamations</a> for Lake and Mendocino counties due to the effects of the River and Ranch fires (4)

Hashtags
<a href="#">#RanchFire</a> <a href="#">#RiverFire</a> <a href="#">#mendocinocomplex</a>

## Fire Maps



Source: [National Interagency Fire Center](#) (August 2, 2018)

Impacted Zip Codes: 95423, 95449, 95451, 95453, 95458, 95464, 95469, 95470, 95479, 95482, 95485, 95493

Nearby Zip Codes: 95418, 95422, 95424, 95435, 95439, 95443, 95469, 95470, 95481, 95487

Continued on Next Page

# Mendocino Complex - Lake, Mendocino, Colusa Counties

## Mandatory Evacuations

Lake County	<ul style="list-style-type: none"> <li>Western Lake County, north of Clear Lake and Bartlett Springs Road, east of the Lake-Mendocino County Line, south of the Ranch Fire, and west of Highland Springs Road, and Bartlett Springs Road. (6)</li> <li>West of Highway 29 and north of Park Way (6)</li> <li>Scotts Valley, Blue Lakes, Upper Lake, Bachelor Valley, and Nice. (6)</li> <li>Bartlett Springs Road at Hwy 20, east along the National Forest boundary to High Valley Road, southeast to the 5 Star Fish Farm, southeast to the north side of Hwy 20, east to New Long Valley Road, extending north to the west side of the Indian Valley Reservoir, north to Bartlett Springs Road, east to the Lake-Colusa County Line, north along the Lake-Colusa County Line extending to Forest Service Road 18N40 (west of the Lake-Colusa-Tehama County Line), and west to the western National Forest boundary in Lake County. (8)</li> </ul>
Mendocino County	<ul style="list-style-type: none"> <li>Highway CA-20 area from one mile south of Highway CA-20, east of Potter Valley Road, south of the fire perimeter, and west of Mendocino-Lake County Line. (6)</li> <li>Pine Avenue area of Potter Valley north of Burris Lane, east of Eastside Potter Valley Road, south of 10511 Eastside Potter Valley Road, and west of the Lake-Mendocino County Line. (6)</li> <li>Mid Mountain Road area, north of 10551 Eastside Potter Valley Road, east of Eastside Potter Valley Road, south of 11385 Eastside Potter Valley Road, west of Mendocino-Lake County line (6)</li> </ul>

## Evacuation Warnings / Advisories

Colusa County	<ul style="list-style-type: none"> <li>East of the Lake-Colusa County Line (Bartlett Springs Road/Brim Road) to Leesville-Lodoga Road, north to Lodoga, west to the National Forest boundary, North along the National Forest boundary to the Colusa-Glenn County Line, and west to the Colusa-Lake County Line. (8)</li> </ul>
Lake County	<ul style="list-style-type: none"> <li>Mendocino National Forest within the boundaries of Lake County: (6)</li> <li>Lake Pillsbury Basin and surrounding area (6)</li> <li>North of Bartlett Springs Road, east of the Ranch Fire, south of the Lake-Mendocino-Glenn County Line, and west of the Lake-Colusa County Line (6)</li> <li>The Lucerne and Paradise Valley areas, north of Clear Lake, east of the Ranch Fire, south of Bartlett Springs Road, west of Paradise Valley Drive (6)</li> <li>Kelseyville area, north of Lake-Sonoma County Line; east of Bottle Rock Road; south of Clear Lake; and west of Soda Bay Road, Red Hills Road, and Highway CA-175; including the subdivisions of Soda Bay, Riviera Heights, Buckingham Park, Riviera West, and Clear Lake Riviera west of Soda Bay Road. (6)</li> <li>Kelseyville, Finley, and Big Valley Rancheria (6)</li> <li>The Lucerne area of Lake County: South of Bartlett Springs Road at Hwy 20, west of the Forest Boundary, including Pierce Canyon and High Valley Road, west of Sulpher Bank Drive at Hwy 20 and north of Clear Lake. (6)</li> <li>South of Bartlett Springs Road at Hwy 20, west of the Forest Boundary, including Pierce Canyon and High Valley Road, west of Sulpher Bank Drive at Hwy 20 and north of Clear Lake.</li> <li>Mandatory Evacuation reduced to advisory on August 2 at 3:00pm: Southeast Lakeport- North of State Highway 29 at Highland Springs Road, east of State Highway 29, south of Park Way, and west of Clear Lake. (7)</li> </ul>

Continued on Next Page

# Mendocino Complex - Lake, Mendocino, Colusa Counties

## Evacuation Warnings / Advisories (continued)

Mendocino County	<ul style="list-style-type: none"> <li>• North of 8000 block of Old River Road to Yokayo Tribe Ranch Road (6)</li> <li>• North of Highway CA-175, east of the Russian River, south of 8000 Old River Road, and west of mile marker 5.6 on Highway CA-175 (6)</li> <li>• Potter Valley Community; All areas north of Highway CA-20, east of the fire edge, to the Mendocino-Lake County Line, South of Burris Lane to MeWhinney Creek and east of East Side Potter Valley Road, to include feeder roads utilizing Burris Lane east to the Mendocino-Lake County Line. (6)</li> <li>• Hopland area north of Highway CA-175, east of mile marker 5.6 on Highway CA- 175, south of the fire, and west of the Mendocino-Lake County Line. (6)</li> <li>• Mid Mountain Road area, north of 10551 Eastside Potter Valley Road, east of Eastside Potter Valley Road, south of 11385 Eastside Potter Valley Road, west of Mendocino-Lake County Line (6)</li> </ul>
------------------	--

## Evacuation Centers / Shelters

Overview	Total shelter occupancy is at 50% of capacity. (5)
Blue Lake	Blue Lake Casino Hotel, 777 Casino Way (4)
Calistoga	Napa County Fairgrounds, 1435 N. Oak St. (4)
Lower Lake	Lower Lake High School, 9430 Lake St - ARC, at about 2/3 capacity (4,5,6)
Middletown	Twin Pines Casino, 22223 S State Hwy. 29 - ARC (4,5,6) Middletown High School, 20932 Big Canyon Rd. - ARC (4,5,6)
Ukiah	Mendocino College, 1000 Hensley Creek Road - County Shelter (4,5,6)
AirBnB	Open homes Program - Mendocino Complex: <a href="https://www.airbnb.com/welcome/evacuees/carrfire">https://www.airbnb.com/welcome/evacuees/carrfire</a>
Small Animal Shelter	Mendocino County Animal Shelter, 298 Plant Rd., Ukiah (4,5,6) Middletown High School, 20932 Big Canyon Rd. (4) Sonoma-Marin Fair, 175 Fairgrounds Dr., Petaluma (4,5) Redwood Riders Arena, 8300 East Rd., Redwood Valley (4,5)
Large Animal Shelter	Middletown High School, 20932 Big Canyon Rd. - Limited Capacity (4) Sonoma-Marin Fair, 175 Fairgrounds Dr., Petaluma (4,5) Redwood Riders Arena, 8300 East Rd., Redwood Valley (4,5,6)

## Road Closures

Major Roads	<p>Highway CA-20</p> <ul style="list-style-type: none"> <li>• at Potter Valley Road to eastbound traffic (6)</li> <li>• at Highway CA-29 to westbound traffic (6)</li> <li>• at Bartlett Springs Road to westbound traffic (6)</li> </ul> <p>Highway CA-29, at Highland Springs Road to westbound traffic</p> <p>Highway CA-175</p> <ul style="list-style-type: none"> <li>• at mile post 5.6 to eastbound traffic, residents with I.D. Allowed (6)</li> <li>• at Highway CA-29 to westbound traffic (6)</li> </ul>
Local Roads - Lake County	<p>Elk Mountain Road at Middle Creek Road (6)</p> <p>Big Valley Road at Soda Bay Road (6)</p> <p>Highland Springs Road at Argonaut Road (6)</p> <p>Highland Springs Road at Merritt Road (6)</p> <p>Bartlett Springs Road at Highway 20 (6)</p>

Continued on Next Page



# Mendocino Complex - Lake, Mendocino, Colusa Counties

## Road Closures (continued)

Local Road Closures - Mendocino County	<p>Mid Mountain Road is closed to eastbound traffic at the Mendocino-Lake County Line/Forest Boundary Mill Creek Road, 1/2 mile east of Old River Road (6)</p> <p>Mill Creek Road, 1/2 mile east of Old River Road (6)</p> <p>Elk Mountain Road south of Pillsbury Road (6)</p>
---	---

## Critical Infrastructure Impacts

Power	Threats to power infrastructure that support Lake and Mendocino Counties. (9) Damaged PG&E local distribution lines (4)
Communications	<p>FAA Radio Communication Link Control Tower. (9)</p> <p>Threats to communications infrastructure that support Lake and Mendocino Counties. (9)</p>

Structures	Threatened	Damaged	Destroyed
Residential	8,000 (9)	8 (6,9)	16 (6,9)
Commercial	200 (9)	-	-
Other Structures	-	4 (9)	17 (9)
Total	8,200 (6)	12 (6)	33 (6)

## Community Infrastructure Threats

Healthcare Facilities	<p>Sutter Lakeside Hospital - was evacuated, staff is in the process of preparing for repopulation. Timeframe to be re-opened is TBD (5)</p> <p>Rocky Point Care Facility - evacuated, working to repopulate (5)</p> <p>Evergreen Lakeport Healthcare - evacuated (5)</p> <p>Dialysis Clinic, Inc - Ukiah - Operational (5)</p>	
Jail	Lake County jail evacuated to Santa Rita Jail in Alameda County (4)	
Schools	No reports of damages to school facilities (5)	
Post Office	Post Office - Closed	Alternate Location
	Lakeport Post Office, 1151 11th St., 95453 (10)	Kelseyville Post Office, 5500 Gaddy Ln., 95451 (10)
	Finley Post Office, 1904 Big Valley Rd., 95435 (10)	Kelseyville Post Office, 5500 Gaddy Ln., 95451 (10)
	Upper Lake Post Office, 9435 Main St., 95485 (10)	Clearlake Post Office, 14500 Olympic Dr., 95422 (10)
	Nice Post Office, 3964 E. State Hwy 20, 95464 (10)	Clearlake Post Office, 14500 Olympic Dr., 95422 (10)

## Recovery

Community Meeting	Friday, August 3 at 6:00pm at the Clearlake Senior Community Center, 3245 Bowers Avenue, Clearlake, CA 95422 the Unified Commanders, CAL FIRE and U.S. Forest Service, are hosting a community meeting to discuss the current situation of the Mendocino Complex. (8)
Information Center	Information Center at the Kelseyville High School will be moved on Friday, August 3 to the Lake County Fairgrounds in Lakeport. (7)

Continued on Next Page

# Mendocino Complex - Lake, Mendocino, Colusa Counties

## Additional Information Resources

Cal Fire Mendocino Complex Public Information Line: (707) 574-8261 or [MendoComplex2018@gmail.com](mailto:MendoComplex2018@gmail.com)

## Information Sources

- 1) Cal Fire Incident Page - Ranch Fire: [http://www.fire.ca.gov/current\\_incidents/incidentdetails/Index/2175](http://www.fire.ca.gov/current_incidents/incidentdetails/Index/2175) (Updated: August 02, 2018 7:41 pm)
- 2) Cal Fire Incident Page - River Fire: [http://www.fire.ca.gov/current\\_incidents/incidentdetails/Index/2178](http://www.fire.ca.gov/current_incidents/incidentdetails/Index/2178) (August 02, 2018 7:38 pm)
- 3) National Interagency Coordination Center Incident Management Situation Report Thursday, August 2, 2018 - 0530 MT
- 4) Cal OES Daily Situation Report - August 2, 2018
- 5) Cal OES Business Operations Center Evening Report - August 2, 2018 4:00pm
- 6) Cal Fire Incident Update - Mendocino Complex: [http://cdfdata.fire.ca.gov/pub/cdf/images/incidentfile2178\\_3840.pdf](http://cdfdata.fire.ca.gov/pub/cdf/images/incidentfile2178_3840.pdf) (Updated: August 2, 2018 7:30pm)
- 7) Cal Fire Incident Update - Mendocino Complex: [http://cdfdata.fire.ca.gov/pub/cdf/images/incidentfile2175\\_3838.pdf](http://cdfdata.fire.ca.gov/pub/cdf/images/incidentfile2175_3838.pdf) (Updated: August 2, 2018 3:00pm)
- 8) InciWeb Incident Page - Mendocino Complex: <https://inciweb.nwcg.gov/incident/6073/> (Updated: August 2, 2018 9:27pm)
- 9) Northern California Geographic Coordination Center Short Briefing 209 Summary Report - Mendocino Complex (Updated: August 2, 2018 5:57pm)
- 10) USPS Service Disruptions: <http://about.usps.com/news/service-alerts/business-weather-updates.htm> (Updated: August 1, 2018 1:00pm)

# Roxie Fire - Lassen County

— FINAL —

Acres Burned [Change]	% Contained [Change]
167 (1) [+0]	100% (1) [+10%]

Start Date	Estimated Containment Date
July 24, 2018 (1)	-

Lead Agency(ies)
CAL FIRE Lassen-Modoc Unit / Lassen National Forest (1)

Initial Location
Roxie Peconom Campground, west of Willard Cr, 10 mi west of Susanville (1)



Structures Threatened	Structures Destroyed
-	None (2)

Evacuations
None (2)

Other Infrastructure Threats
None (2)

Projected Fire Activity
Crews will continue to monitor the fire over the next few weeks. (2)

Cause of the Fire
Improperly extinguished campfire that was outside a designated campground (3)

Hashtags
<a href="#">#RoxieFire</a>

Fire Maps
Source: <a href="#">National Interagency Fire Center Map (August 2, 2018)</a>
Impacted Zip Codes: not a clearly defined zip code area
Nearby Zip Codes: -

## Information Sources

- 1) Cal Fire Incident Page - Roxie Fire: [http://www.fire.ca.gov/current\\_incidents/incidentdetails/Index/2168](http://www.fire.ca.gov/current_incidents/incidentdetails/Index/2168) (Updated: August 01, 2018 8:59 am)
- 2) Cal Fire Incident Update - Roxie Fire: [http://cdfdata.fire.ca.gov/pub/cdf/images/incidentfile2168\\_3802.pdf](http://cdfdata.fire.ca.gov/pub/cdf/images/incidentfile2168_3802.pdf) (Updated: August 1, 2018 7:00am)
- 3) Cal Fire News Release - Investigators Arrest Suspected Transient for Recklessly Starting the Roxie Fire: [http://cdfdata.fire.ca.gov/pub/cdf/images/incidentfile2168\\_3761.pdf](http://cdfdata.fire.ca.gov/pub/cdf/images/incidentfile2168_3761.pdf) (Updated: July 30, 2018)



# Whaleback Fire - Lassen

Acres Burned [Change]	% Contained [Change]
18,726 (1) [+10,726]	60% (1) [+55%]

Start Date	Estimated Containment Date
July 27, 2018 (1)	August 8, 2018 (2,3,5)

Lead Agency(ies)
Unified Command: CAL FIRE and USFS Lassen National Forest (1)

Initial Location
off Whaleback Mountain and Antelope Valley Road, West of Spaulding (1); <a href="#">Spaulding, CA About 20 miles NW of Susanville, CA (2)</a>

Structures Threatened	Structures Destroyed
460 residences (4,5)	None (5)

Projected Fire Activity
24 hrs: The northwest and northeast portion of the fire may continue to spread. Fire could also spread south-west upslope towards Antelope Mountain. No fire spread expected along south and eastern flanks.
48-72 hrs: 48 hours: Potential fire spread to west, and north-west (2)
Containment lines will be tested over the next few days as the Red Flag Warning will likely remain in effect through the weekend. (2)

Cause of the Fire
Unknown (2,5)

State Emergency Proclamation
On 07/31/18, a Proclamation was received from Lassen County due to the effects of the Whaleback Fire. The county is requesting state assistance and a Presidential Declaration. (4)

Hashtags
<a href="#">#WhalebackFire</a>



## Fire Maps



Source: [National Interagency Fire Center Map \(August 2, 2018\)](#)

Impacted Zip Codes: 96130, 96040

Nearby Zip Codes: n/a

Additional Maps: <https://inciweb.nwcg.gov/incident/maps/6048/>

Continued on Next Page

## Whaleback Fire - Lassen (continued)

### Evacuations

Mandatory Evacuations	Community of Spalding, Gallatin Marina, Ronald McDonald House, and the Merrill, Christie, Eagle and Aspen campgrounds (2)
Advisory Evacuations	<a href="#">Communities of Buck's Bay and Stones Landing (2)</a>
Shelters	Assembly of God Church, 473-465 Richmond Rd. N, Susanville (4)

### Road Closures

[County Road A1 is closed to the north at Lakeside Drive near Buck's Bay and to the south at Alta Drive in Lake Forest. \(2\)](#)  
[County Rd 105 is closed at HWY 44 \(2\)](#)  
[County Rd 231 \(2\)](#)

### Critical Infrastructure Impacts

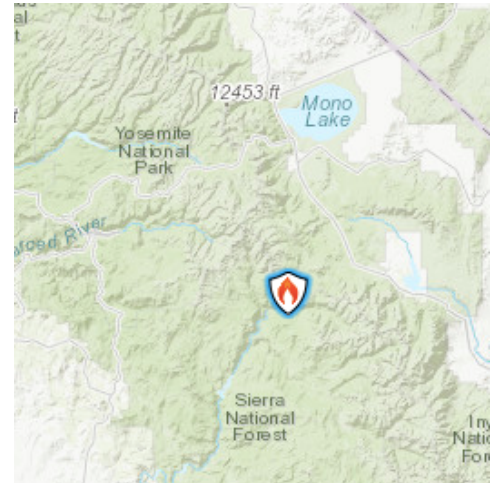
Power	<a href="#">There is significant damage to the LMUD power lines that supply power to the communities of Spalding, Buck's Bay and Stones Landing. (2)</a> <a href="#">LMUD utility lines are threatened (4)</a>
-------	---

### Information Sources

- 1) Cal Fire Incident Page - Whaleback Fire: [http://www.fire.ca.gov/current\\_incidents/incidentdetails/Index/2180](http://www.fire.ca.gov/current_incidents/incidentdetails/Index/2180) (Updated: August 02, 2018 9:04 pm)
- 2) InciWeb Incident Page - Whaleback Fire: <https://inciweb.nwcg.gov/incident/6048/> (Updated: August 2, 2018 9:16pm)
- 3) National Interagency Coordination Center Incident Management Situation Report Thursday, August 2, 2018 - 0530 MT
- 4) Cal OES Daily Situation Brief - August 2, 2018
- 5) Northern California Geographic Coordination Center Short Briefing 209 Summary Report - Whaleback Fire (Updated: August 2, 2018 5:32pm)

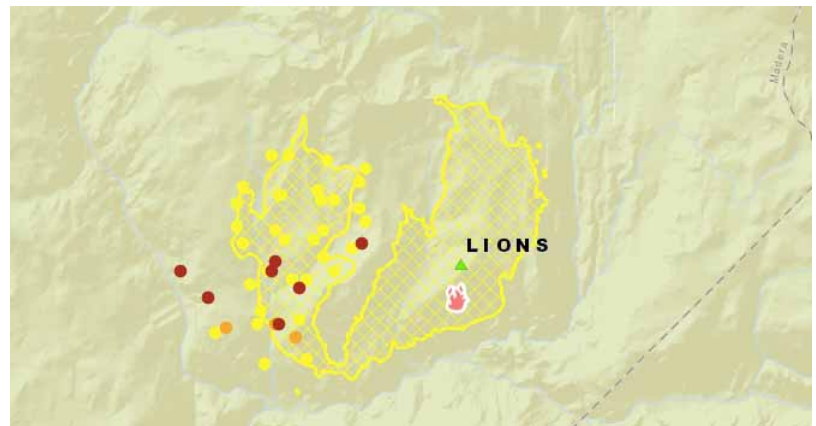
# Lions Fire - Madera County

Acres Burned [Change]	% Contained [Change]
6,648 (3) [+2,233]	60% (1) [-32%]
Start Date	Estimated Containment Date
June 1, 2018 (1)	August 25, 2018 (2)
Lead Agency(ies)	
Sierra National Forest (1)	
Initial Location	
7 miles southwest of Mammoth Lakes. (1)	



Structures Threatened	Structures Destroyed
None (2)	None (2)
Evacuations	
None (2)	
Other Infrastructure Threats	
None listed	
Projected Fire Activity	
<p>Active fire behavior with uphill, flanking, and isolated torching (3)</p> <p>The area has seen approximately 50% tree mortality from bark beetles. (1)</p>	
Cause of the Fire	
Lightning Strike (1)	
Hashtags	
#LionsFire	

## Fire Activity Map



Source: [National Interagency Fire Center Map \(Aug 2, 2018\)](#)

Additional Fire Maps: <https://inciweb.nwcg.gov/incident/maps/5850/>

Information Line: [lionsfireinformation@gmail.com](mailto:lionsfireinformation@gmail.com) or 925-817-0826

## Information Sources

- 1) InciWeb Incident Page - Lions Fire: <https://inciweb.nwcg.gov/incident/5850/> (Updated: August 2, 2018 1:46pm)
- 2) National Interagency Coordination Center Incident Management Situation Report Thursday, August 2, 2018 - 0530 MT
- 3) Southern California Geographic Coordination Center - News and Notes - Lions Fire: <https://gacc.nifc.gov/oscc/news.php> (Updated: August 2, 2018 7:30pm)



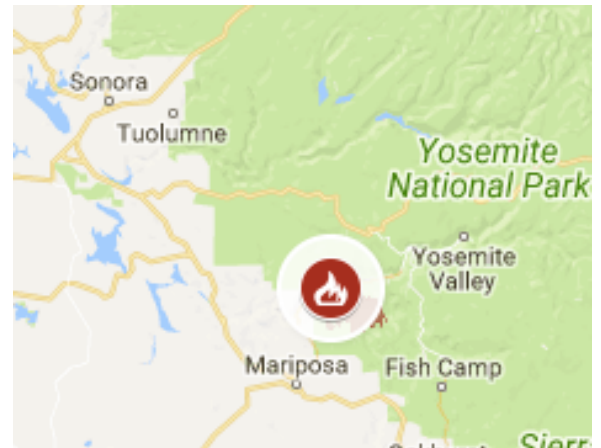
# Ferguson Fire - Mariposa County

Acres Burned [Change]	% Contained [Change]
69,440 (1) [+17,769]	41% (1) [+11%]

Start Date	Estimated Containment Date
July 13, 2018 (1)	August 15, 2018 (2,7)

Lead Agency(ies)
U.S. Forest Service, Mariposa County Sheriff (7)

Initial Location
Highway 140 and Savages Trading Post(5); Highway 140 and Hite Cove, near El Portal (1)



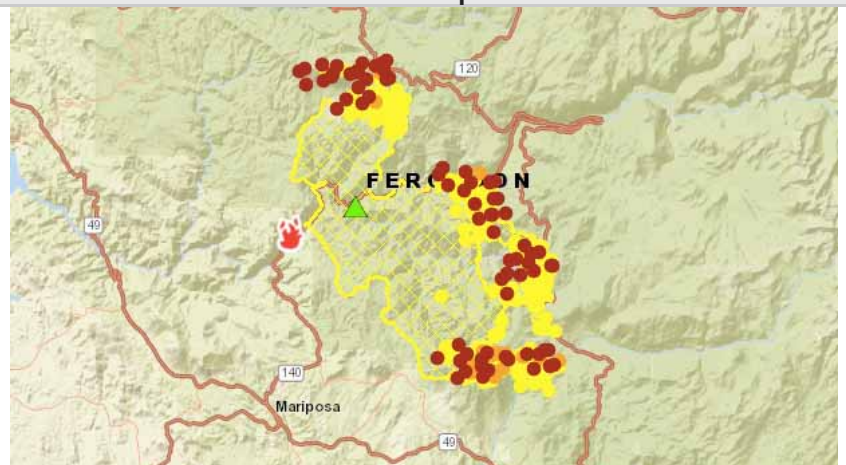
Projected Fire Activity
Active fire behavior with flanking, backing and isolated torching. (2) Burning in difficult terrain with limited access and a high tree mortality(3) The high pressure system above the fire is weakening which will result in warmer and drier conditions. With lower wind speeds and the inversion layer forecasted to lift by midday, residents will likely see taller smoke columns than they are used to. (5)

Cause of the Fire
Unknown/Under Investigation (5,7)

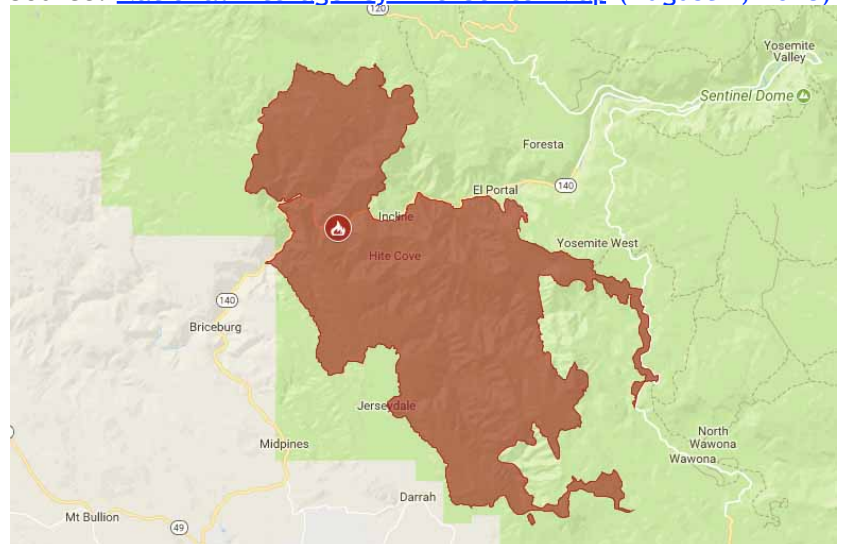
State Emergency Proclamation
On 07/26/18, Governor Edmund G. Brown Jr. issued an emergency proclamation for Mariposa County due to the effects of the Ferguson Fire (3)

Hashtags
<a href="#">#fergusonfire</a>

## Fire Maps



Source: [National Interagency Fire Center Map \(August 2, 2018\)](#)



Source: [Cal OES 2018 Incident Map \(August 1, 2018 6:54am\)](#)

Impacted Zip Codes: 93623, 95311, 95318 , 95321, 95338 , 95345, 95389

Nearby Zip Codes: 93601, 93604, 93644

Continued on Next Page

## Ferguson Fire - Mariposa County (continued)

### Evacuations

<b>Mandatory Evacuations</b>	<b>Total Number of People Evacuated: 313 (3)</b> <ul style="list-style-type: none"> <li>• Anderson Valley area (5,6)</li> <li>• Foresta (5,6)</li> <li>• Old El Portal (5,6)</li> <li>• Old Yosemite Road (5,6)</li> <li>• River Road from Briceburg to last BLM Campground (5,6)</li> <li>• Wawona (6)</li> <li>• Yosemite View Lodge (5,6)</li> <li>• Yosemite West (5,6)</li> </ul>
<b>Advisory Evacuations</b>	<ul style="list-style-type: none"> <li>• Cedar Lodge/Indian Flat Campground (5,6)</li> <li>• El Portal Trailer Court (6)</li> <li>• Rancheria Flat and all campgrounds along Highway 140 (5,6)</li> <li>• Savages Trading Post (5,6)</li> </ul>
<b>Evacuations Lifted / Repopulation</b>	<ul style="list-style-type: none"> <li>• Mariposa Pines (5)</li> <li>• Lushmeadows subdivision (5)</li> <li>• Ponderosa Basin Area (5)</li> <li>• East Westfall Rd. including all side roads (5)</li> </ul>

### Evacuation Centers / Shelters

Overview	Total shelter occupancy is at about 1% of capacity (4)
Mariposa	New Life Christian Fellowship, 5089 Cole Rd - ARC (3,4)
Small Animal Shelter	SPCA of Mariposa County: 5599 CA-49, Mariposa (3,4,5,6) Mariposa County Elementary School, 5044 Jones St, Mariposa (4)
Large Animal Shelter	Mariposa County Fairgrounds: 5007 Fairgrounds Rd, Mariposa (5,6) Coarsegold Rodeo Grounds: 44777 Rodeo Grounds Ln., Coarsegold (standby status) (3)

### Road Closures

Major Roads	Hwy 140 is closed from 1.9 miles east of Midpines to the Cedar Lodge area (5) Big Oak Flat Road (Highway 120) from entrance of Yosemite National Park to Crane Flat. (6) Incline Road and Highway 140 from the entrance of Yosemite National Park to 1.5 miles east of Midpines, except to residents (6) Wawona Road (Highway 41) between Chilnualna Falls Road in Wawona and Bridalveil Falls parking lot in Yosemite Valley (6)
Local Roads	Anderson Valley Road Foresta Road (6) River Road from Briceburg to the gate at Railroad Flat and all campground areas along Highway 140 (6) Summit Road (6) Old Yosemite Road (Coulterville Road) (6)

Continued on Next Page

# Ferguson Fire - Mariposa County (continued)

## Critical Infrastructure Impacts

Power	Transmission lines that provide power to the communities along Hwy. 140 and Yosemite National Park remain threatened. (3,8) Power is being supplied to areas East of El Portal using generators (3)
Water	No unsafe water alerts or boil water notices (4)

Structures	Threatened	Damaged	Destroyed
Total	694 (7)	0 (7)	10 (4,5,7)

## Community Infrastructure Threats

Schools	No reports of damages to school facilities (4)
National Park	Yosemite National Park officials extended closures of Yosemite Valley, Wawona Road, the Mariposa and Merced groves of giant sequoias, Hetch Hetchy and other areas through Aug. 5 (6)

## Recovery

Community Meeting	Friday, August 3 at 6pm at the Mountain Christian Center, 40299 Highway 49, in Oakhurst - Representatives from the Incident Management Team, U.S. Forest Service and Mariposa County Sheriff's Office will discuss the current fire situation and suppression efforts (6)
Recovery Meetings	First official recovery meeting is scheduled for 08/08/18 at 1300 hours, in the Mariposa County Administrative Building. (3)
Recovery Website	The County Administrator's Office has taken the lead for recovery and is in the process of updating their recovery website. (3)

## Additional Information Sources

Ferguson Fire Info Line: (530) 377-6221

Mariposa County Website: <http://www.mariposacounty.org>

Mariposa County Sheriff's Office Facebook: <https://www.facebook.com/mariposacountysheriff/>

CAL FIRE Madera-Mariposa-Merced Facebook: <https://www.facebook.com/CALFIREMMU/>

Mariposa County Recovers Website: <http://www.mariposacountyrecovers.org>

## Information Sources

- 1) Cal Fire Incident Page - Ferguson Fire: [http://www.fire.ca.gov/current\\_incidents/incidentdetails/Index/2135](http://www.fire.ca.gov/current_incidents/incidentdetails/Index/2135) (Updated: August 02, 2018 6:48 pm)
- 2) National Interagency Coordination Center Incident Management Situation Report Thursday, August 2, 2018 - 0530 MT
- 3) Cal OES Daily Situation Report - August 2, 2018
- 4) Cal OES Business Operations Center Evening Report - August 2, 2018 4:00pm
- 5) InciWeb Incident Page - Ferguson Fire: <https://inciweb.nwcg.gov/incident/5927/> (Updated: August 2, 2018 5:45pm)
- 6) InciWeb Incident Update - Ferguson Fire Evening Update for August 2, 2018: <https://inciweb.nwcg.gov/incident/article/5927/44900/> (Updated: August 2, 2018 7:00pm)
- 7) USDA Ferguson Fire Update: [https://inciweb.nwcg.gov/photos/CASNF/2018-07-14-1535-FERGUSON-FIRE/related\\_files/pict20180702-204818-0.pdf](https://inciweb.nwcg.gov/photos/CASNF/2018-07-14-1535-FERGUSON-FIRE/related_files/pict20180702-204818-0.pdf) (Updated: August 2, 2018 7:00pm)
- 8) Southern California Geographic Coordination Center - News and Notes - Ferguson Fire: <https://gacc.nifc.gov/oscc/news.php> (Updated: August 2, 2018 7:30pm)



# Eel Fire - Mendocino County

## — Newly Added Fire —

Acres Burned [Change]	% Contained [Change]
1,000 (1)	25% (1)

Start Date	Estimated Containment Date
July 31, 2018 (1)	August 7, 2018 (5) August 10, 2018 (4)

Lead Agency(ies)
Mendocino National Forest (1)

Initial Location
10 miles east of Covelo (1)



Structures Threatened	Structures Destroyed
40 residences (1,5)	3 residences (2,5)

Evacuations
All residences between Black Butte River, Anthony Peak, Forest Service Rd. (3)

Other Infrastructure Threats
Anthony Peak Lookout threatened (1)

Projected Fire Activity
The fire continues to spread east and north. (1)
Active fire behavior with short-range spotting. (4)
Persistent hot and dry conditions. Potential north winds could push the fire towards FH7 (1)

Cause of the Fire
Human (5)

Hashtags
#EelFire

Fire Maps
Source: <a href="#">National Interagency Fire Center Map (August 2, 2018)</a>
Impacted Zip Codes: in non-defined zip code area
Nearby Zip Codes: 95428
Fire Information Life: 530-640-1168

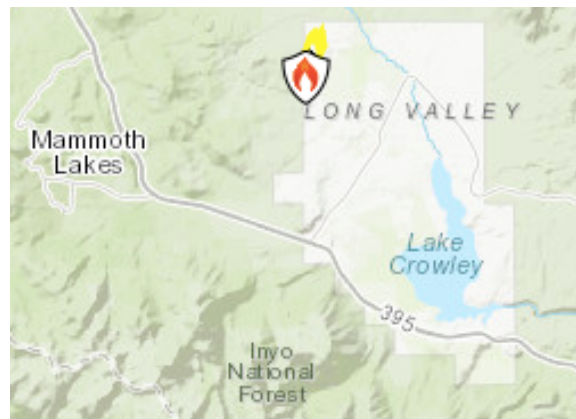
## Information Sources

- 1) InciWeb Incident Page - Eel Fire: <https://inciweb.nwcg.gov/incident/6083/> (Updated: August 2, 2018 7:40pm)
- 2) National Interagency Coordination Center Incident Management Situation Report Thursday, August 2, 2018 - 0530 MT
- 3) InciWeb Incident Update - New fire starts on Mendocino NF: <https://inciweb.nwcg.gov/incident/article/6083/44829/> (Updated: August 2, 2018 6:30am)
- 4) National Interagency Coordination Center Incident Management Situation Report Thursday, August 2, 2018 - 0530 MT
- 5) Northern California Geographic Coordination Center Short Briefing 209 Summary Report - Eel Fire (Updated: August 2, 2018 5:53pm)

# Hot Creek Fire - Mono County

## — Newly Added Fire —

<b>Acres Burned</b> [Change]	<b>% Contained</b> [Change]
436 (3)	95% (3)
<b>Start Date</b>	<b>Estimated Containment Date</b>
July 31, 2018 (1)	August 3, 2018 (1)
<b>Lead Agency(ies)</b>	
Inyo National Forest (1)	
<b>Initial Location</b>	
northeast of the Town of Mammoth Lakes (1)	



<b>Structures Threatened</b>	<b>Structures Destroyed</b>
None (2)	None (2)
<b>Evacuations</b>	
Lifted (1)	
<b>Other Infrastructure Threats</b>	
None listed	
<b>Projected Fire Activity</b>	
Low potential for spread (1) Minimal fire behavior with smoldering (3)	
<b>Cause of the Fire</b>	
Lightning (1)	
<b>Hashtags</b>	
#HotCreekFire	

Fire Maps
Source: <a href="#">National Interagency Fire Center Map</a> (August 2, 2018)
Impacted Zip Codes: in non-defined zip code area
Nearby Zip Codes: 93546

## Information Sources

- 1) InciWeb Incident Page - Hot Creek Fire: <https://inciweb.nwccg.gov/incident/6075/> (Updated: August 2, 2018 1:20pm)
- 2) Southern California Geographic Coordination Center Situation Report - Hot Creek Fire (Updated: August 2, 2018 6:48pm)
- 3) Southern California Geographic Coordination Center - News and Notes - Hot Creek Fire: <https://gacc.nifc.gov/oscc/news.php> (Updated: August 2, 2018 7:30pm)

# Owens Fire - Mono County

## — Newly Added Fire —

Acres Burned [Change]	% Contained [Change]
312 (2)	95% (2)
Start Date	Estimated Containment Date
July 31, 2018 (1)	August 3, 2018 (1)
Lead Agency(ies)	
Inyo National Forest (1)	
Initial Location	
8 miles northeast of the town of Mammoth Lakes (1)	



Structures Threatened	Structures Destroyed
None listed	None listed
Evacuations	
Lifted (1)	
Other Infrastructure Threats	
None listed	
Projected Fire Activity	
Fire Activity Is Minimal, Further spread not expected. (1) Minimal fire behavior with smoldering (2)	
Cause of the Fire	
Lightning (1)	
Hashtags	
#OwensFire	

Fire Maps
Source: <a href="#">National Interagency Fire Center Map</a> (August 2, 2018)
Impacted Zip Codes: in non-defined zip code area
Nearby Zip Codes: 93546

## Information Sources

- 1) InciWeb Incident Page - Owens Fire: <https://inciweb.nwcg.gov/incident/6077/> (Updated: August 2, 2018 1:39pm)
- 2) Southern California Geographic Coordination Center - News and Notes - Owens Fire: <https://gacc.nifc.gov/oscc/news.php> (Updated: August 2, 2018 7:30pm)

# Steele Fire - Napa County

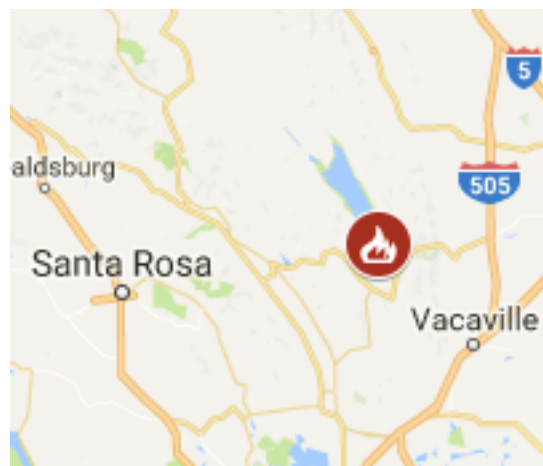
— FINAL —

Acres Burned [Change]	% Contained [Change]
135 (1) [-15]	100% (1) [+90%]

Start Date	Estimated Containment Date
July 28, 2018 (1)	-

Lead Agency(ies)
CAL FIRE Sonoma-Lake-Napa Unit (1)

Initial Location
off Arroyo Grande Drive and Steele Canyon Road, Capell (1); Steele Canyon Rd, Napa (2)



Structures Threatened	Structures Destroyed
-	8 (1)

Evacuations
Lifted (1)

Other Infrastructure Threats
Road Closures: None (1)

Projected Fire Activity
Local fire crews will continue to patrol and monitor the fire area. (2)

Cause of the Fire
Under Investigation (2)

State Emergency Proclamation
On 07/28/18, Governor Edmund G. Brown Jr. issued <a href="#">Emergency Proclamations</a> for Napa county due to the effects of the Steele fire (3)

Hashtags
<a href="#">#steelefire</a>

Fire Maps
No Fire Perimeter Map
Impacted Zip Codes: 94558
Nearby Zip Codes: -

## Information Sources

- 1) Cal Fire Incident Page - Steele Fire: [http://www.fire.ca.gov/current\\_incidents/incidentdetails/Index/2184](http://www.fire.ca.gov/current_incidents/incidentdetails/Index/2184) (Updated: August 02, 2018 12:04 pm)
- 2) Cal Fire Incident Update - Steele Fire: [http://cdfdata.fire.ca.gov/pub/cdf/images/incidentfile2184\\_3785.pdf](http://cdfdata.fire.ca.gov/pub/cdf/images/incidentfile2184_3785.pdf) (Updated: July 31, 2018 11:00am)
- 3) Cal OES Daily Situational Brief - August 2, 2018




# Cranston Fire - Riverside County

Acres Burned [Change]	% Contained [Change]
13,139 (1,3) [+21]	96% (1,3) [+67%]
Start Date	Estimated Containment Date
July 25, 2018 (1)	August 9, 2018 (2,3,6)
Lead Agency(ies)	
San Bernardino National Forest (6)	
Initial Location	
off Highway 74 and Control Road, east of Hemet (1)	



Evacuations
All evacuations have been lifted (4,6)
Projected Fire Activity
Minimal fire behavior. (2) All containment lines have held the fire in place for three days now. Mop up of remaining hot spots continues. (6)
Cause of the Fire
Arson (6)
Emergency Proclamations
On 07/26/18, Governor Edmund G. Brown Jr. issued <a href="#">emergency proclamations</a> for Riverside county due to the effects of the Cranston fire. (4) On 07/30/18, a Declaration of a Local Public Health Emergency from Riverside County was received due to the effects of the Cranston Fire. (4)
Additional Maps
<a href="https://inciweb.nwcg.gov/incident/maps/6032/">https://inciweb.nwcg.gov/incident/maps/6032/</a>
Hashtags
<a href="#">#CranstonFire</a>

Fire Maps

Source: <a href="#">Cal Fire 2018 Incidents Map</a> (July 30, 2018 11:46pm)
Impacted Zip Codes: 92544, 92549, 92561
Nearby Zip Codes: 92264

Continued on Next Page

# Cranston Fire - Riverside County (continued)

## Evacuation Centers / Shelters

Anza	Hamilton High School (57430 Mitchell Rd. - still providing relief for those that need it (6) <a href="#">Anza Community Center is open between 7:00 a.m. and 10:00 p.m. for ice, water, snacks and refreshments. (6)</a>
Animal Shelter (Large & Small)	San Jacinto Valley Animal Campus, 581 S. Grand, San Jacinto (5) <a href="#">Disarm Equestrian Park, 2101 West Victory, Banning - unknown if accepting small animals (5)</a>

## Road Closures

Major Roads	<p>Hwy 74 and 243 are open to residents by pilot car only (7)</p> <p>Hwy 74 is closed from:</p> <ul style="list-style-type: none"> <li>• <a href="#">McGaugh Road and Borco Street. (6)</a></li> <li>• <a href="#">Borco Street in Hemet to Highway 74 at Lake View Drive (Lake Hemet Market) (6)</a></li> </ul> <p>Hwy 243 is closed from:</p> <ul style="list-style-type: none"> <li>• <a href="#">Lower Saunders Meadow Road and the Keenwild Fire Station (6)</a></li> <li>• <a href="#">Lower Saunders Meadow Road to Highway 74 (6)</a></li> </ul>
Restricted Access	<a href="#">For residents of Mountain Center, Apple Canyon, Bonita Vista and Garner Valley, proof of residency, business ownership, or employment in the area will be required to pass through the road closure located at Lake View Drive (Lake Hemet Market) from Garner Valley. (6)</a>

## Critical Infrastructure Impacts

Power	<p><a href="#">Power has been shut off to the communities of Mountain Center, Apple Canyon, Lake Hemet, and Hurkey Creek. (4)</a></p> <p><a href="#">Southern California Edison is continuing their efforts to restore power. (6)</a></p>
-------	---

Structures	Threatened	Damaged	Destroyed
Total	0 (6)	5 (5)	12 (5)

## Community Infrastructure Threats

Schools	<a href="#">No reports of damages to school facilities (5)</a>
---------	--

## Information Sources

- 1) Cal Fire Incident Page - Cranston Fire: [http://www.fire.ca.gov/current\\_incidents/incidentdetails/Index/2169](http://www.fire.ca.gov/current_incidents/incidentdetails/Index/2169) (Updated: August 02, 2018 8:13 pm)
- 2) National Interagency Coordination Center Incident Management Situation Report Thursday, August 2, 2018 - 0530 MT
- 3) InciWeb Incident Page - Cranston Fire: <https://inciweb.nwcg.gov/incident/6032/> (Updated: August 2, 2018 7:57pm)
- 4) Cal OES Daily Situation Report - August 2, 2018
- 5) Cal OES Business Operations Center Evening Report - August 2, 2018 4:00pm
- 6) InciWeb Incident Update - Cranston Fire Evening Update 08/02/2018: <https://inciweb.nwcg.gov/incident/article/6032/44904/> (Updated: August 2, 2018 7:00pm)
- 7) Southern California Geographic Coordination Center - News and Notes - Cranston Fire: <https://gacc.nifc.gov/oscc/news.php> (Updated: August 2, 2018 7:30pm)

# Ribbon Fire - Riverside County

— FINAL —

Acres Burned [Change]	% Contained [Change]
205 (1,2) [+5]	100% (1,2) [+30%]

Start Date	Estimated Containment Date
July 26, 2018 (1)	-

Lead Agency(ies)
Bureau of Indian Affairs - CAL FIRE / Riverside County Fire (1)

Initial Location
Highway 74 and Ribbonwood Dr. near Pinyon (1)



Structures Threatened	Structures Destroyed
-	None listed

Evacuations
All have been lifted (2)

Other Infrastructure Threats
None listed

Projected Fire Activity
-

Cause of the Fire
Lightning (2)

State Emergency Proclamation
None

Hashtags
#RibbonFire

Fire Maps
No perimeter map
Impacted Zip Codes: 92561
Nearby Zip Codes: 92539

## Information Sources

- 1) Cal Fire Incident Page - Ribbon Fire: [http://www.fire.ca.gov/current\\_incidents/incidentdetails/Index/2174](http://www.fire.ca.gov/current_incidents/incidentdetails/Index/2174) (Updated: August 01, 2018 8:59 am)
- 3) Riverside County Fire Department - Incident Fact Sheet: <http://www.rvcfire.org/Layouts/Incident%20Information/IncidentInfoDetail.aspx?4282> (Updated: July 30, 2018 6:00pm)

# Valley Fire - San Bernardino County

Acres Burned [Change]	% Contained [Change]
1,350 (1,2) [+0]	30% (1,2) [+1%]
Start Date	Estimated Containment Date
July 6, 2018 (1)	November 1, 2018 (2)
Lead Agency(ies)	
San Bernardino National Forest (1)	
Initial Location	
Forest Falls, CA (1)	



Structures Threatened	Structures Destroyed
None (3)	None (2)
Evacuations	
None listed	
Other Infrastructure Threats	
None listed	
Projected Fire Activity	
The fire experienced minimal growth over the last week and remains in steep, inaccessible terrain. (1)	
Cause of the Fire	
Under Investigation (1)	
State Emergency Proclamation	
None	
Hashtags	
#ValleyFire	

Fire Maps
Source: <a href="#">National Interagency Fire Center Map (August 2, 2018)</a>
Impacted Zip Codes: 92339
Nearby Zip Codes: 92399

## Information Sources

- 1) InciWeb Incident Page - Valley Fire: <https://inciweb.nwcg.gov/incident/5900/> (Updated: July 31, 2018 10:30am)
- 2) National Interagency Coordination Center Incident Management Situation Report Thursday, August 2, 2018 - 0530 MT
- 3) Southern California Geographic Coordination Center Situation Report - Valley Fire (Updated: July 28, 2018 6:29pm)



# Pasqual Fire - San Diego County

— FINAL —

Acres Burned [Change]	% Contained [Change]
365 (1) [+0]	100% (1) [+45%]

Start Date	Estimated Containment Date
July 27, 2018 (1)	-

Lead Agency(ies)
Unified Command: CAL FIRE San Diego County Fire Authority and San Diego County Fire (1)

Initial Location
San Pasqual Valley Rd, west of Ramona (1)

Structures Threatened	Structures Destroyed
-	None (2)

Evacuations
None (2)

Other Infrastructure Threats
Road Closures: None (2)

Projected Fire Activity
All fire equipment and personnel have been released. (1)

Cause of the Fire
Under investigation (2)

State Emergency Proclamation
None

Hashtags
<a href="#">#PasqualFire</a>



Fire Maps
Source: <a href="#">National Interagency Fire Center Map (August 2, 2018)</a>
Impacted Zip Codes: 92025, 92027, 92065
Nearby Zip Codes: n/a

## Information Sources

- 1) Cal Fire Incident Page - Pasqual Fire: [http://www.fire.ca.gov/current\\_incidents/incidentdetails/Index/2177](http://www.fire.ca.gov/current_incidents/incidentdetails/Index/2177) (Updated: August 01, 2018 8:57 am)
- 2) Cal Fire Incident Update - Pasqual Fire: [http://cdfdata.fire.ca.gov/pub/cdf/images/incidentfile2177\\_3772.pdf](http://cdfdata.fire.ca.gov/pub/cdf/images/incidentfile2177_3772.pdf) (Updated: July 30, 2018 6:00pm)

# Rock Fire - San Diego County

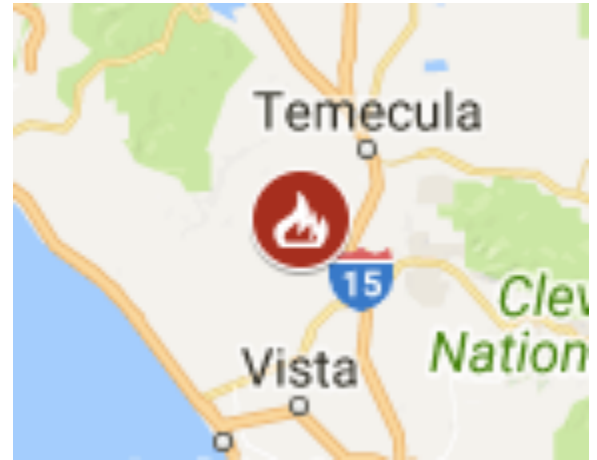
— FINAL —

Acres Burned [Change]	% Contained [Change]
207 (1) [-18]	100% (1) [+90%]

Start Date	Estimated Containment Date
July 28, 2018 (1)	-

Lead Agency(ies)
CAL FIRE San Diego Fire Authority (1)

Initial Location
Rock Mountain Dr. and Sandia Creek Dr. in the community of Fallbrook. (1)



Structures Threatened	Structures Destroyed
None (2)	None (2)

Evacuations
Lifted (1)

Other Infrastructure Threats
Road Closures: Lifted (1)

Projected Fire Activity
-

Cause of the Fire
Under investigation (2)

State Emergency Proclamation
None

Hashtags
#RockFire

Fire Maps

Source: <a href="#">National Interagency Fire Center Map (August 2, 2018)</a>
Impacted Zip Codes: 92028
Nearby Zip Codes: n/a

## Information Sources

- 1) Cal Fire Incident Page - Rock Fire: [http://www.fire.ca.gov/current\\_incidents/incidentdetails/Index/2183](http://www.fire.ca.gov/current_incidents/incidentdetails/Index/2183) (Updated: August 01, 2018 8:57 am)
- 2) Cal Fire Incident Update - Rock Fire: [http://cdfdata.fire.ca.gov/pub/cdf/images/incidentfile2183\\_3790.pdf](http://cdfdata.fire.ca.gov/pub/cdf/images/incidentfile2183_3790.pdf) (Updated: July 31, 2018 6:00pm)

# Carr Fire - Shasta & Trinity Counties

Acres Burned [Change]	% Contained [Change]
126,913 (1) [+43,113]	37% (1) [+32%]
Start Date	Estimated Containment Date
July 23, 2018 (1)	August 10, 2018 (3,5); Unknown (2)
Lead Agency(ies)	
Unified Command: CAL FIRE Shasta-Trinity Unit, Redding City Fire and Whiskeytown National Park (1)	
Initial Location	
Hwy 299 and Carr Powerhouse Rd, Whiskeytown (1); Hwy 299 @ Carr Powerhouse Rd (2)	



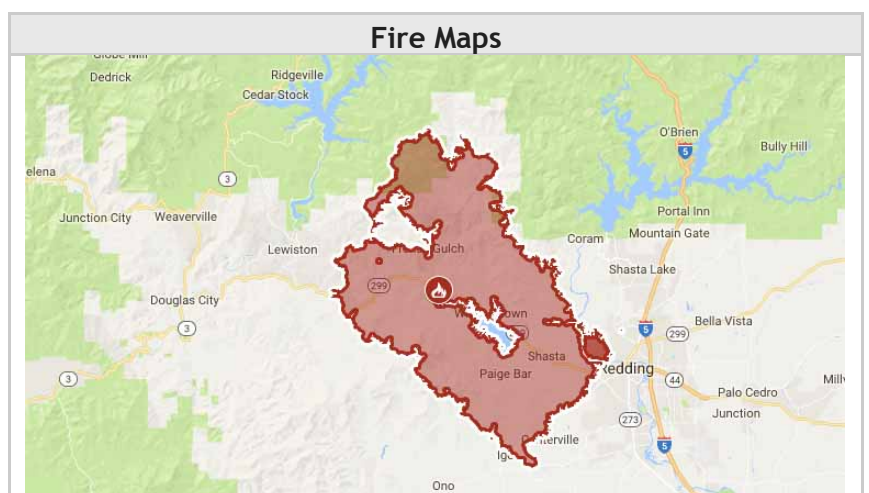
Projected Fire Activity
A Red Flag Warning has been issued this evening through Saturday. (1) Current fire behavior is short range spotting and torching. (7)

Cause of the Fire
Mechanical Failure of Vehicle (1)

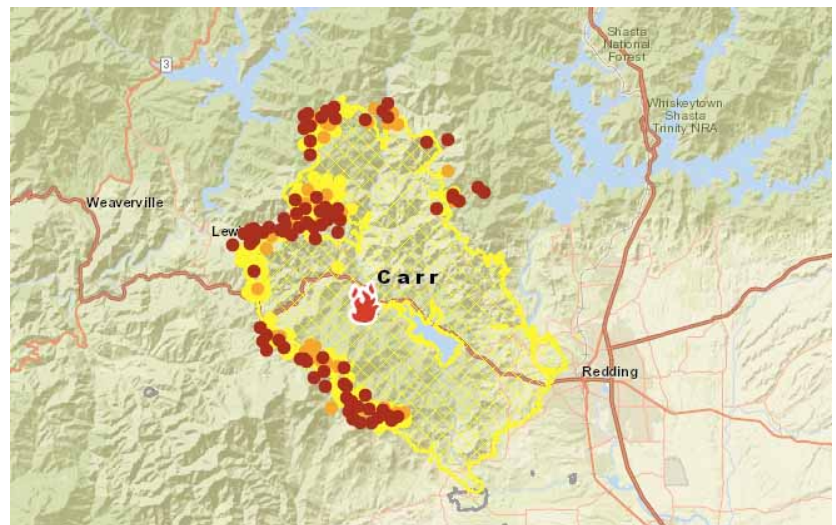
Additional Cal Fire Maps
<a href="http://cdfdata.fire.ca.gov/incidents/incidents_details_maps?incident_id=2164">http://cdfdata.fire.ca.gov/incidents/incidents_details_maps?incident_id=2164</a>

State Emergency Proclamation
On 07/26/18, Governor Edmund G. Brown Jr. issued <a href="#">emergency proclamations</a> for Shasta county due to the effects of the Carr fire. (4)

Hashtags
<a href="#">#CarrFire</a>



Source: [Cal Fire 2018 Incidents Map](#) (August 1, 2018 12:15am)



Source: [National Interagency Fire Center Map](#) (Aug 2, 2018)

Impacted Zip Codes: 96001, 96003, 96007, 96019, 96024, 96033, 96047, 96052, 96079, 96087, 96089, 96095

Nearby Zip Codes: 96002, [96048](#), 96051, 96091, [96093](#), 96099

Continued on Next Page

# Carr Fire - Shasta County (continued)

## Evacuations - Mandatory

Overview	For the most up to date orders visit: <a href="https://www.co.shasta.ca.us/index/sheriff_index.aspx">https://www.co.shasta.ca.us/index/sheriff_index.aspx</a> (2)
Shasta County	<ul style="list-style-type: none"> <li>Community of French Gulch (2)</li> <li>SR 299 west of Trinity Mountain Rd to the base of Buckhorn Summit (2)</li> <li>Whiskey Creek Rd to include the boat launch/day use areas (2)</li> <li><a href="#">South along Swasey Dr from SR299 to Placer Rd (2)</a></li> <li><a href="#">Placer Road West From Diggins Road (2)</a></li> <li><a href="#">The Igo Community (2)</a></li> <li>Keswick Dam East to Counter Lane, North to quartz Hill Rd (2)</li> <li>Cloverdale Rd from Placer Rd to Clear Creek Rd (2)</li> <li>Placer Rd at Platina Rd to Buell Rd which includes South Fork Rd, Zogg Mine Road, Jenny Bird Lane, Horse Canyon Rd and all residents West of Platina Rd between Placer Rd and Buell Rd (2)</li> <li>All areas on South Fork Road from Zogg Mine Rd to South Fork Road to include the areas of Bender Rd, Serenity Dr and Serenity Way (2)</li> </ul>
City of Redding	<ul style="list-style-type: none"> <li>North of Sacramento River to Keswick Dam Rd (2)</li> </ul>
Trinity County	<ul style="list-style-type: none"> <li><a href="#">Trinity/Shasta County Line at Buckhorn Summit Rd W. to Trinity Dam Rd. All roads w/in this area North of Hwy 299 (2)</a></li> <li><a href="#">Hwy 299 at Trinity Dam Blvd continuing North to Hwy 3 including Deadwood Road, Jennings Gulch Road, Eastman Gulch Road &amp; Lewiston Turn Pike Road. This is to include all residences and side streets east of Trinity Dam Blvd within the Township of Lewiston (2)</a></li> <li><a href="#">Hwy 299 at Trinity Dam Road west to Douglas City (2)</a></li> <li><a href="#">Trinity Dam Road Blvd to Hwy 3 including all residences within Lewiston area to Trail Drive, Red Lane, Old Highway, Lewiston Road, Ohio Lane, Lowden Way, Ponderosa Pines, River Front Road, Wellock Road, S. Ponderosa Pine, Coffin Road, Dirt Road, Benvenuto Way, Browns Mountain Road, Mountain Springs Road, Jobe Way, Steelhead Circle, Rebel Road, Quail Point Road, Lockhart Ranch Road, Prut Road, Upper Salt Flat Road, Salt Flat Road, Goose Ranch Road, Dredger Lane, Bacham Lane, Partridge Lane, Shady Lane, River Rock Road, Old Oak Road, Gulch Road and Lewiston Turn Pike Road (2)</a></li> <li><a href="#">All roads and streets west of Trinity Dam Blvd and east of Lewiston Road (2)</a></li> <li><a href="#">Deadwood Road east of Trinity Dam Blvd (2)</a></li> <li><a href="#">All residences on Baker Road including Cooper Gulch, Posey Road, Lakeview Terrace and Pine Cove Marina including Eagle Mountain Road (2)</a></li> </ul>
Maps	<p><b>Carr Fire - Evacuation / Re-population map:</b> <a href="http://nifc.maps.arcgis.com/apps/webappviewer/index.html?id=cdd41ecf8575458ea8851c6f76770d50">http://nifc.maps.arcgis.com/apps/webappviewer/index.html?id=cdd41ecf8575458ea8851c6f76770d50</a></p> <p><b>Car Fire Activity Map:</b> <a href="http://redding.maps.arcgis.com/apps/webappviewer/index.html?id=94b379a91e0f47cb91712da22f603d39">http://redding.maps.arcgis.com/apps/webappviewer/index.html?id=94b379a91e0f47cb91712da22f603d39</a></p>

Continued on Next Page



## Carr Fire - Shasta County (continued)

### Evacuation Centers / Shelters

Overview	Total Shelter occupancy is about 10% of capacity with none of the shelters near capacity (5)
Anderson	Valley Christian Center, 2831 Freeman St - Independent Shelter, (4,5)
Corning	Rolling Hills Casino, 2655 Freeman Way
Palo Cedro	Foothill High School - 9793 Deschutes - ARC (2,4,5)
Redding	Shasta College 11555 Old Oregon Trail - ARC (2,4,5) Cross Point Community Church 2960 Hartnell Ave - ARC (2,4,5) Simpson College, 2211 College View Drive - ARC (4,5) Grace Baptist Church- 3782 Churn Creek Rd - Independent Shelter (4,5) Hope Center, 1465 E. Cypress Ave - Independent Shelter (4,5)
Susanville	Assembly of God Church, 473-465 Richmond Rd. N - Independent Shelter (4,5)
Weaverville	Trinity High School 321 Victory Lane - ARC (2,4,5)
AirBnB	Open homes Program - Carr Fire: <a href="https://www.airbnb.com/welcome/evacuees/carrfire">https://www.airbnb.com/welcome/evacuees/carrfire</a>
Small Animal Shelter	Haven Humane, 9417 East Side Drive, Redding Redding Rodeo Grounds, 715 Auditorium Drive Redding (5) Haven Humane, Anderson Factory Outlet, 1816 CA-273, Anderson (2) Shasta Livestock Auction, 3917 Main St., Cottonwood (4,5) Colusa County Fair, 1303 10th St., Colusa (4) Trinity High School, 321 Victory Ln., Weaverville (4,5) Trinity County Animal Control Office, 563 Mountain View, Weaverville (4,5) Tehama District Fairgrounds, 650 Antelope Blvd, Red Bluff (5)
Large Animal Shelter	Tehama County Fairgrounds, 650 Antelope Blvd, Red Bluff (2,5) Shasta Livestock Auction, 3917 Main St., Cottonwood (4,5) Lassen County Fair, 195 Russell Ave., Susanville (4) Colusa County Fair, 1303 10th St., Colusa (4) Lowden Park, Lowden Ln. & Washington St., Weaverville (4,5) Trinity High School, 321 Victory Ln., Weaverville (4,5)

### Transportation / Road Closures

Major Roads	Hwy 299 - closed from 4.4 miles east of the East Junction of SR 3 at Poker Bar Road in Trinity County to Buenaventura Blvd in Redding, Shasta County (10) SR 273 - no closures (11)
-------------	--

Continued on Next Page

## Carr Fire - Shasta County (continued)

### Transportation / Road Closures (continued)

Local Roads - Shasta County	<p>Texas Springs at Placer Road - Residents Only (2)</p> <p>Buckhorn Summit at Hwy 299, Eastbound (2)</p> <p>Clear Creek Road at Cloverdale Lane (2)</p> <p>Gas Point Road at Clear Creek Rd (2)</p> <p>Gas Point Road and Foster Road Happy Valley Trail and Hawthorn Road (2)</p> <p>Iron Mountain Rd at Hwy 299 (2)</p> <p>Lower Springs Rd at Swasey Drive (2)</p> <p>Swasey Drive &amp; Placer Road (2)</p> <p><a href="#">Weseman Road at Powerline Road (2)</a></p> <p><a href="#">Quartz Hill Road at Counter (2)</a></p> <p><a href="#">Platina Road at Bully Choop (2)</a></p> <p>Placer Road at Chapparal Drive (2)</p> <p>Montgomery Ranch Road at Placer Road (2)</p>
Local Roads - City of Redding	<p>Benton &amp; Quartz Hill Road (2)</p> <p>Buenaventura at Keswick (2)</p> <p>Buenventura &amp; Hwy 299 (2)</p> <p>Elk Dr at Carnelian (2)</p> <p>Keswick Dam Road &amp; Quartz Hill Road (2)</p> <p>Lake Blvd at Keswick Dam (2)</p> <p>Lake Blvd at Quartz Hill (2)</p> <p>Oasis Road &amp; Lake Blvd (2)</p> <p>Ridge Lane at SR 299 (2)</p> <p><a href="#">Sunset Drive at Eureka Way - Residents Only (2)</a></p>
Local Roads - Trinity County	<p><a href="#">Old Hwy at Poker Bar Road (2)</a></p> <p><a href="#">Rush Creek Road East of China Grade (2)</a></p> <p><a href="#">Trinity Dam Blvd at Fairview Marina Drive (2)</a></p> <p><a href="#">Browns Mountain Road at Lewiston Road (2)</a></p>
Local Roads - Overview	<p>For the most up to date closures visit: <a href="https://www.co.shasta.ca.us/index/sheriff_index.aspx">https://www.co.shasta.ca.us/index/sheriff_index.aspx</a> (2)</p>
Rail	<p><a href="#">No service disruption for the Coast Starlight trains listed (12)</a></p>

Continued on Next Page

## Carr Fire - Shasta County (continued)

### Critical Infrastructure Impacts (continued)

Power	PG&E has begun limited restoration efforts in burn area. (4) Continued threat to 115kV and 230kV powerlines (4,7) Keswick Dam is restricted to minimal electrical output due to damaged powerlines (4,7) Three major Western Area Power Administration (WAPA) towers were destroyed, which powers numerous Northern Coastal Communities (4,7) All Bureau of Reclamation power plants near the Carr Fire area have been tested and are operational. (4) Full operations should resume Thursday, 8/2, in the evening or early Friday 8/3. (5)	
	Communications 1 cell site down (4)	
Water	<b>Water Treatment Plant</b>	<b>Status</b>
	Surface Water Treatment Plant	System remains on boil water notice. Office building was destroyed (5)
	Keswick Water Treatment Plant	Operating on generator power (5)
	French Gulch Water Treatment Plant	Operating on generator power (5)
	Clear Creek Water Treatment Plant at Whiskytown Dam	operational and producing water with acceptable quality, boil water advisory lifted 7/31/18 (5)
	Centerville Water Treatment Plant	Operating on generator power, boil water advisory lifted 7/31/18 (5)
	Buckeye Water Treatment Plant, City of Redding	operational and functioning normally (5)
	City of Shasta Lake Water Treatment Plant	Operational (5)
	Threat remains for the Iron Mountain Mine Superfund site. (7) Iron Mountain Mine, a Superfund cleanup site which contains highly acidotic discharge and requires constant power to prevent the discharge from going into the Sacramento River (4) No concern about imminent releases from Iron Mountain. (8)	

Structures	Threatened	Damaged	Destroyed
Residential	-	189 (1)	1,060 (1,4)
Commercial	-	8 (1)	19 (1)
Other Structures	-	61 (1)	474 (1)
Total	1,358 (1)	258 (5)	1,553
Maps	Structure Status Information Map: <a href="http://calfire-forestry.maps.arcgis.com/apps/PublicInformation/index.html?appid=5bbcbcd430ad45e5a38e6be155ef5fec">http://calfire-forestry.maps.arcgis.com/apps/PublicInformation/index.html?appid=5bbcbcd430ad45e5a38e6be155ef5fec</a>		

Continued on Next Page

## Carr Fire - Shasta County (continued)

### Community Infrastructure Threats

Hospitals	<p>Patients' Hospital of Redding - restarted limited services on Thursday 8/2 and will open to admitting patients starting Friday 8/3 (5)</p> <p>Trinity Hospital - Open, operating on back-up power (4)</p> <p>Mercy Medical Center Redding - Open (4)</p>	
Long Term Care Facilities	<p>NVDS - Showboat and NVDS - Old Lantern - still evacuated (5)</p>	
Schools	<p>Whisky town Environmental School - damage to outbuildings, full extent of damage still unknown. Summer camps canceled through 8/10/18 (5)</p> <p>Shasta union Elementary School - all playground, solar field , garden, greenhouse, and garage destroyed; some portable classrooms sustained damaged</p> <p>Most school districts are hoping to start the 2018-2019 school year on time in mid to late August, a final decision will be forthcoming (5)</p>	
Post Offices	Post Office - Closed	Alternate Location
	Igo Post Office, 6484 Placer Rd., 96047 (9)	Redding Main Post Office, 2323 Churn Creek Rd., 96002 (9)
	French Gulch Post Office, 14200 Main St., 96033 (9)	Downtown Redding Post Office, 1647 Yuba St., 96001 (9)
	Lewiston Post Office, 4391A Trinity Dam Blvd., 96052 (9)	Weaverville Post Office, 50 S. Miner St., 96093 (9)

### Recovery

Local Assistance Center (LAC)	<p>Shasta High School, 2500 Eureka Wy., Redding. OPEN - August 2-8 from 9:00am - 7:00pm (2,4)</p> <p>Over 40 agencies expected to be represented at the LAC (5)</p>
Debris Removal	<p>On 08/01/18, Shasta County proclaimed a local health emergency. Shasta County is requesting assistance for CA state with debris removal. (4)</p> <p>No fire related debris shall be removed without prior inspection by the U.S. EPA, California Department of Toxic Substances Control or the Shasta County Environmental Health Division. (6)</p> <p>Properties with destroyed structure(s) from a wildfire are being offered a clean-up and debris removal service conducted by specialized work crews which are contracted and managed by County and State waste specialists. This program is being paid for with public funds. If property owners have a specified amount for debris removal in their insurance policy, they will need to provide the specified amount to the County. (6)</p> <p>Property owners must sign up for the debris removal program by completing a Right-of-Entry Form which allows access to their property to complete the removal work. (6)</p> <p>Shasta County - Asbestos and Hazardous Waste Service Providers: <a href="https://www.co.shasta.ca.us/docs/libraries/resource-management-docs/ehd-docs/shasta-county-asbestos-and-hazardous-waste-service-providers--revised.pdf?sfvrsn=5fc0fb89_0">https://www.co.shasta.ca.us/docs/libraries/resource-management-docs/ehd-docs/shasta-county-asbestos-and-hazardous-waste-service-providers--revised.pdf?sfvrsn=5fc0fb89_0</a></p> <p>Shasta County - Health &amp; Safety Concerns for property Cleanup: <a href="https://www.co.shasta.ca.us/docs/libraries/resource-management-docs/ehd-docs/shasta-county-health-and-safety-concerns-for-property-cleanup_revised.pdf?sfvrsn=f7c7fb89_0">https://www.co.shasta.ca.us/docs/libraries/resource-management-docs/ehd-docs/shasta-county-health-and-safety-concerns-for-property-cleanup_revised.pdf?sfvrsn=f7c7fb89_0</a></p>

Continued on Next Page



# Carr Fire - Shasta County (continued)

## Recovery (continued)

Food Disposal	Shasta County - Food Safety During Temporary Power Outages: <a href="https://www.co.shasta.ca.us/docs/libraries/resource-management-docs/ehd-docs/food-safety-for-private-homes-during-temporary-power-outages.pdf?sfvrsn=69cafb89_0">https://www.co.shasta.ca.us/docs/libraries/resource-management-docs/ehd-docs/food-safety-for-private-homes-during-temporary-power-outages.pdf?sfvrsn=69cafb89_0</a> Shasta County - Food Safety During Temporary Power Outages for Retail Food Facilities: <a href="https://www.co.shasta.ca.us/docs/libraries/resource-management-docs/ehd-docs/food-safety-for-retail-food-facilities-during-temporary-power-outages.pdf?sfvrsn=7bcafb89_0">https://www.co.shasta.ca.us/docs/libraries/resource-management-docs/ehd-docs/food-safety-for-retail-food-facilities-during-temporary-power-outages.pdf?sfvrsn=7bcafb89_0</a>
Additional Resources	Shasta County 2-1-1: <a href="http://211norcal.org/resources-for-evacuees/">http://211norcal.org/resources-for-evacuees/</a>

## Additional Information Sources

Shasta County Sheriffs Office Facebook: <https://www.facebook.com/Shasta-County-Sheriffs-Office-1527637610823075/>  
 Shasta County Sheriffs Office Website: [https://www.co.shasta.ca.us/index/sheriff\\_index.aspx](https://www.co.shasta.ca.us/index/sheriff_index.aspx)  
 Shasta County Environmental Health Division, 1855 Placer Street, Suite 201 Redding, CA 96001; Telephone (530) 225-5787  
 City of Redding Facebook: <https://www.facebook.com/CityOfRedding/>  
 Cal Fire Carr Fire Information Line : (530) 225-2510  
 Carr Fire Fatality Information Line: (530) 734-8762

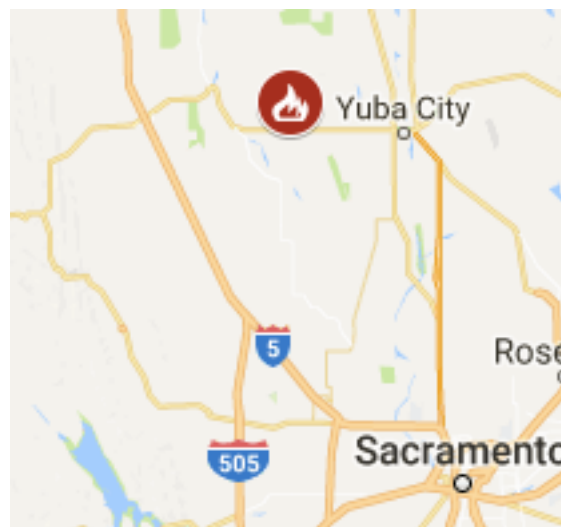
## Information Sources

- 1) Cal Fire Incident Page - Carr Fire: [http://www.fire.ca.gov/current\\_incidents/incidentdetails/Index/2164](http://www.fire.ca.gov/current_incidents/incidentdetails/Index/2164) (Updated: August 02, 2018 7:52 pm)
- 2) Cal Fire Incident Update - Carr Fire: [http://cdfdata.fire.ca.gov/pub/cdf/images/incidentfile2164\\_3841.pdf](http://cdfdata.fire.ca.gov/pub/cdf/images/incidentfile2164_3841.pdf) (Updated: August 2, 2018 7:00pm)
- 3) National Interagency Coordination Center Incident Management Situation Report Thursday, August 2, 2018 - 0530 MT
- 4) Cal OES Daily Situation Brief - August 2, 2018
- 5) Cal OES Business Operations Center Evening Report - August 2, 2018 4:00pm
- 6) Shasta County Department of Resource Management Environmental Health Division - HEALTH AND SAFETY CONCERNS FOR PROPERTY CLEANUP: [https://www.co.shasta.ca.us/docs/libraries/resource-management-docs/ehd-docs/shasta-county-health-and-safety-concerns-for-property-cleanup\\_revised.pdf?sfvrsn=f7c7fb89\\_0](https://www.co.shasta.ca.us/docs/libraries/resource-management-docs/ehd-docs/shasta-county-health-and-safety-concerns-for-property-cleanup_revised.pdf?sfvrsn=f7c7fb89_0) (Viewed: August 3 1:05am)
- 7) Northern California Geographic Coordination Center - News and Notes - Carr Fire: <https://gacc.nifc.gov/oncc/news.php> (Updated: August 2, 2018 7:00pm)
- 8) Northern California Geographic Coordination Center Short Briefing 209 Summary Report - Mendocino Complex (Updated: August 2, 2018 5:47am)
- 9) USPS Service Disruptions: <http://about.usps.com/news/service-alerts/business-weather-updates.htm> (Updated: August 1, 2018 1:00pm)
- 10) Cal Trans Current highway Conditions - SR 299: <http://www.dot.ca.gov/cgi-bin/roads.cgi?roadnumber=299&submit=Search> (Viewed: August 3, 2018 4:23am)
- 11) Cal Trans Current Highway Conditions - SR 273: <http://www.dot.ca.gov/cgi-bin/roads.cgi?roadnumber=273&submit=Search> (Viewed: August 3, 2018 4:25am)
- 12) Amtrak Service Alerts: <https://www.amtrak.com/alert.html> (Viewed: August 3, 2018 5:00am)

# Butte Fire - Sutter County

## — Newly Added Fire & FINAL—

Acres Burned [Change]	% Contained [Change]
Approx 1,200 (3)	100% (3)
Start Date	Estimated Containment Date
July 31, 2018 (1)	-
Lead Agency(ies)	
Sutter County Fire Protection District (1)	
Initial Location	
Pass Road and W Butte Road, 9 miles northwest of Yuba City (1)	



Structures Threatened	Structures Destroyed
-	None (3)

Evacuations
Lifted (3)

Other Infrastructure Threats
fire caused minor damage to a communications array on the western peak of South Butte. (3)

Projected Fire Activity
Sutter County Fire personnel will continue to monitor the area until there is no further threat. (2)

Cause of the Fire
unknown / under investigation (3)

State Emergency Proclamation
None

Hashtags
#ButteFire

Fire Maps
No Perimeter Map
Impacted Zip Codes: 95982
Nearby Zip Codes: -

## Information Sources

- 1) Cal Fire Incident Page - Butte Fire: [http://www.fire.ca.gov/current\\_incidents/incidentdetails/Index/2188](http://www.fire.ca.gov/current_incidents/incidentdetails/Index/2188) (Updated: July 31, 2018 9:12 pm)
- 2) National Interagency Coordination Center Incident Management Situation Report Thursday, August 2, 2018 - 0530 MT
- 3) County of Sutter Office of Emergency Management Facebook Post: <https://www.facebook.com/SutterCountyOEM/posts/1710614312319986> (Updated: August 2, 2018 12:00pm)

## Downloadable Map Files

File	Link	Download Guide #	File Types
Air Quality Index (AQI)	<a href="https://airnow.gov/index.cfm?action=google_earth.index">https://airnow.gov/index.cfm?action=google_earth.index</a>	B	KML Only
Cal Fire 2018 Statewide Fire Map	<a href="https://www.google.com/maps/d/viewer?mid=1HacmM5E2ueL-FT2c6QMVzoAmE5M19GAf">https://www.google.com/maps/d/viewer?mid=1HacmM5E2ueL-FT2c6QMVzoAmE5M19GAf</a>	A	KML & KMZ
NASA FIRMS Map (fire activity)	<a href="https://firms.modaps.eosdis.nasa.gov/active_fire/#firms-shapefile">https://firms.modaps.eosdis.nasa.gov/active_fire/#firms-shapefile</a>	C	Shape & KML

### Download Instructions

Guide #	Instructions
A	<ol style="list-style-type: none"> <li>1) click on the three dots in the red header bar for the more options dropdown menu</li> <li>2) select "Download KML"</li> <li>3) Select whether you want a KML or KZM File</li> </ol>
B	Step 1 under Instructions for Google Earth has the "click here" download link
C	Select the desired map file type and select the desired time period under "USA (Conterminous) and Hawaii"

### Guide for Overlaying Zip Code Data in Google Earth

After opening KML or KZM file in Google Earth activate the Postal Code Boundary layer to see the zip codes. Postal Code Boundary layer is located in Google Earth under Layers -> More -> US Government -> Postal Code Boundary. Tip: to make it easier to see the zip code boundaries, turn off the roads layer.

# Wildfire Resource Links

## National Significant Wildland Fire Potential Outlook

[https://www.predictiveservices.nifc.gov/outlooks/monthly\\_seasonal\\_outlook.pdf](https://www.predictiveservices.nifc.gov/outlooks/monthly_seasonal_outlook.pdf)

## Cal Fire Incident Page

[http://www.fire.ca.gov/current\\_incidents](http://www.fire.ca.gov/current_incidents)

## National Interagency Coordination Center Daily Situation Report (Fire)

<https://www.nifc.gov/nicc/sitreprt.pdf>

## CalFire 2018 Wildfire Map

<https://www.google.com/maps/d/viewer?mid=1HacmM5E2ueL-FT2c6QMVzoAmE5M19GAf&hl=en&ll=37.421476393980626%2C-119.27200899999997&z=6>

## National 7-Day Significant Fire Potential Map

<http://psgeodata.fs.fed.us/forecast/#/outlooks?state=map>

## Air Quality Conditions - Fires Map

[https://airnow.gov/index.cfm?action=topics.smoke\\_wildfires](https://airnow.gov/index.cfm?action=topics.smoke_wildfires)

## CDC Wildfire Smoke Exposure

<https://www.cdc.gov/disasters/wildfires/smoke.html>

## NOAA Hazard Mapping System Fire and Smoke Product

<http://www.ospo.noaa.gov/Products/land/hms.html>

## Red Cross Disaster Shelter Locations

<http://www.redcross.org/get-help/disaster-relief-and-recovery-services/find-an-open-shelter>

## USGS Emergency Assessment of Post-Fire Debris-Flow Hazards

[https://landslides.usgs.gov/hazards/postfire\\_debrisflow/](https://landslides.usgs.gov/hazards/postfire_debrisflow/)

The California Resiliency Alliance is a 501c3 non-profit empowering local and regional resiliency efforts through cross-sector information sharing and partnerships. The content in this brief provided for internal use by California Resiliency Alliance members. Copyright owners retain all copyrights to material referenced.