

Weekly Wildfire Brief

[Provide Feedback on this Report](#)

Notice: The information in this report is subject to change and may have evolved since the compiling of this report.

BLUE Text = Newly added information and information that has changed since the last wildfire brief.

GRAY Text = Information where nothing new has been posted since the last wildfire brief, unable to reverify the information as still being current.

Inside this Brief:

Summary	Pg 1 - 2	Current Air Quality Map	Pg 6
Weather Information	Pg 3	Wildfire Snapshot Pages	Pg 7 - 25
Red Flag Watches & Warnings	Pg 4	Additional Resources	Pg 26
Significant Fire Potential Maps	Pg 5		

(Previous Brief Published 7/19/18)

Wildfire Summary - July 26, 2018

For reference: 1 sq mile = 640 acres ; 1 football field = approx 1.32 acres

Fire	Acres Burned [Change]	% Contained [Change]	Evacuations	Structures Threatened	Structures Destroyed	Page
Butte County						
Stoney Fire (FINAL)	962	100% [+2%]	None	None	None	<u>7</u>
Contra Costa County						
Marsh Fire *	247	75%	YES	13	4	<u>8</u>
Del Norte & Siskiyou Counties						
Natchez Fire *	2,738	Not listed	None	None listed	None listed	<u>9</u>
Inyo County						
Georges Fire	2,883 [-5]	70% [+28%]	None	None	None	<u>10</u>
Lassen County						
Roxie Fire *	167	70%	None	None	None	<u>11</u>
Madera County						
Lions Fire	4,267 [+203]	92%	None	None listed	None	<u>12</u>
Mariposa County						
Ferguson Fire	44,223 [+22,682]	27% [+20%]	YES	5,236	1	<u>13-15</u>
Modoc County						
Eagle Fire (FINAL)	2,100 [+0]	95% [+5%]	None listed	None listed	None listed	<u>16</u>

Continued on Next Page

Wildfire Summary (continued)

For reference: 1 sq mile = 640 acres ; 1 football field = approx 1.32 acres

Fire	Acres Burned [Change]	% Contained [Change]	Evacuations	Structures Threatened	Structures Destroyed	Page
Riverside County						
Cranston Fire *	7,500	5%	YES	4,927	None	<u>17-18</u>
Ribbon Fire *	200	5%	Warnings	Yes	None listed	<u>19</u>
Skyline Fire (FINAL)	282 [+32]	95% [+90%]	None listed	None	None	<u>20</u>
San Bernardino County						
Valley Fire	1,350 [+2]	29% [+0]	None listed	None	None	<u>21</u>
Shasta County						
Carr Fire *	28,763	6%	YES	496	30	<u>22-23</u>
Siskiyou County						
Klamath Fire (FINAL)	38,008 [+0]	100% [+2%]	None	-	82	<u>24</u>
Also see Natchez fire under Del Norte & Siskiyou Counties						
Yolo County						
Eighty-Eight Fire (FINAL)	822 [+2]	100% [+10%]	None	-	None	<u>25</u>

Weather Information

Source: Cal OES Daily Situation Report - July 26, 2018

NORTHERN CALIFORNIA

*** VERY hot, dry conditions will continue a few more days, still hot, dry, but a gradual cooling trend this weekend/early next week. ***

The airmass over Northern California will remain quite hot and dry as strong high pressure persists over California into next week. No thunderstorms are expected, but there may be a few afternoon cumulu cloud buildups over our northern and eastern mountains today. Temperatures will be as much as around 10 degrees above normal for the next few days followed by a gradual cooling trend this weekend by a few degrees each day into early next week. The warmest inland areas will continue to have afternoon highs above 100 for the next 7 days.

There will be some gusty W to NW winds each day over the Coast Range into the western Sacramento Valley and through The Delta region through at least Saturday. Elsewhere across the region, winds will mostly be quite light with local terrain driven, diurnal patterns prevailing. Coastal areas will be under the influence of a rather shallow marine layer with a fairly light onshore flow, but the marine layer may deepen a little early next week and reach a little further inland then.

SOUTHERN CALIFORNIA

Isolated wet thunderstorms in the Sierras and on the east side of the San Bernardino, Cleveland N.F. this afternoon

Minor cooling trend, but temperatures expected to remain above normal through the end of next week

Onshore flow has returned which will bring some cooling to the coast and a few intermediate valleys today into the weekend. But the valleys and lower foothills will still see temperatures of 100-104 through Saturday before temperatures drop back into the 90s next week. There has been a slight increase in moisture over Southern California early this morning which will allow isolated wet thunderstorms to develop this afternoon on the east side of the San Bernardino and Cleveland N.F. - including areas near the Cranston Fire. Isolated thunderstorms will be possible near the Sierra Crest today as well, but Central California will see a drying trend the next few days which should bring an end to convection north of Kern County. Minimum relative humidity will briefly drop into the teens during the afternoon the next two days across northern sections of Los Angeles County and the Kern County Mountains and some interior valleys of the central coast. This weekend into early next week, high pressure will shift slightly eastward which may generate an increase in wet thunderstorm coverage over Southern California. Thunderstorms may reach further west to include Ventura and Los Angeles Counties by next Sunday or Monday. Meanwhile, Central California will be much drier with RH dropping into the 10-15% range over a wide area by Monday. Expect northwest winds of 10-20 mph along the central coast and southwest winds of 15-30 mph in the desert interface regions each afternoon.

Red Flag Warnings & Watches

Current Red Flag Warnings & Watches



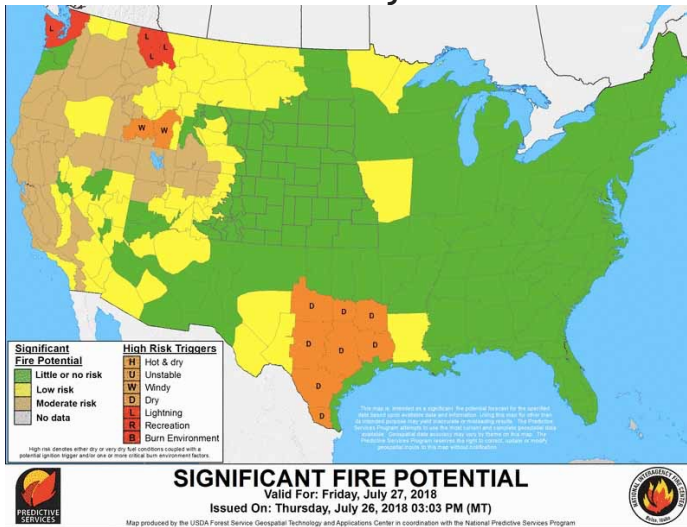
Source: <https://www.weather.gov/fire/> (July 26, 2018 3:46pm)

Current Watches, Warnings or Advisories for California Link

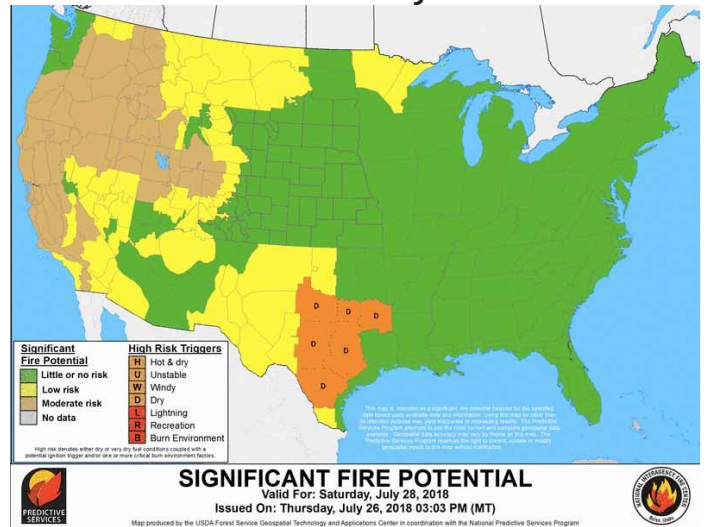
<https://alerts.weather.gov/cap/ca.php?x=1>

Significant Fire Potential Maps

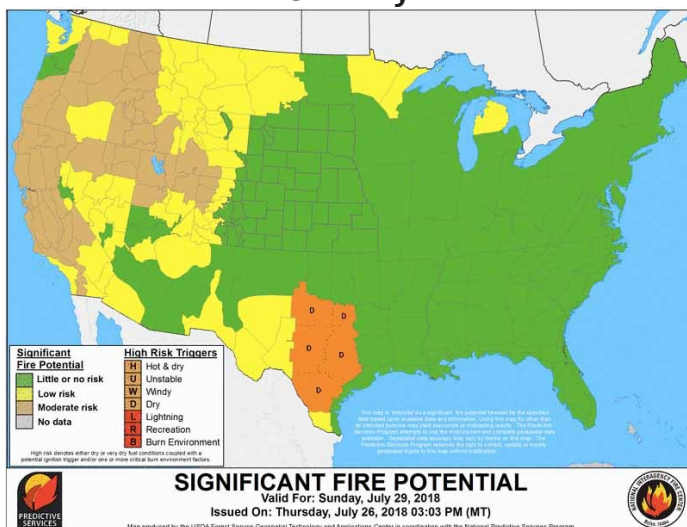
Friday



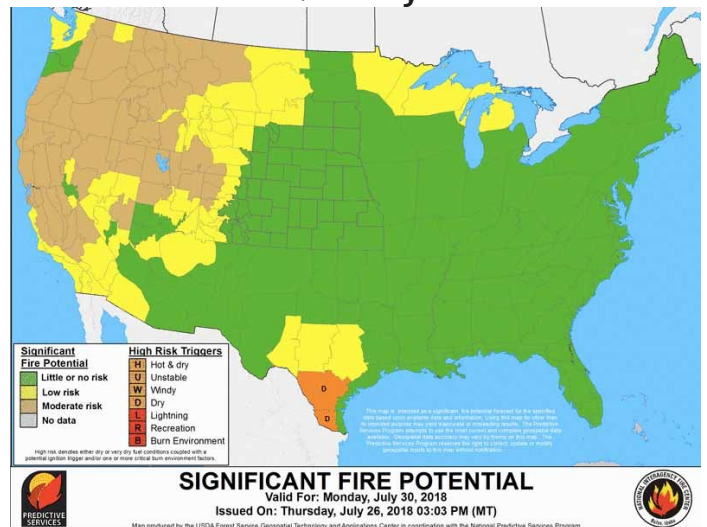
Saturday



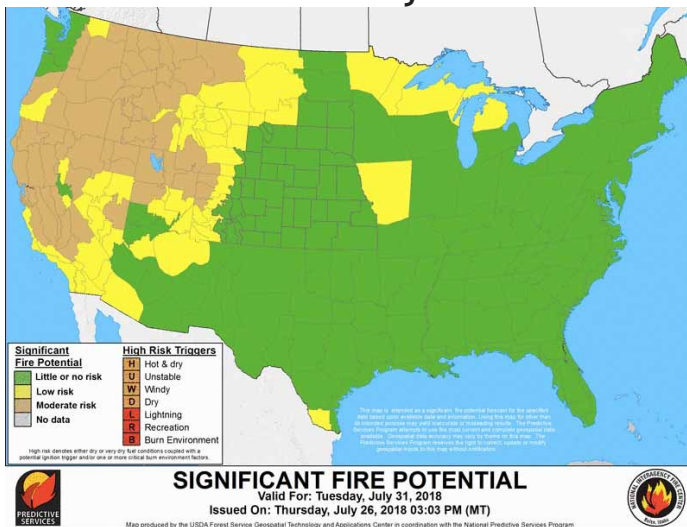
Sunday



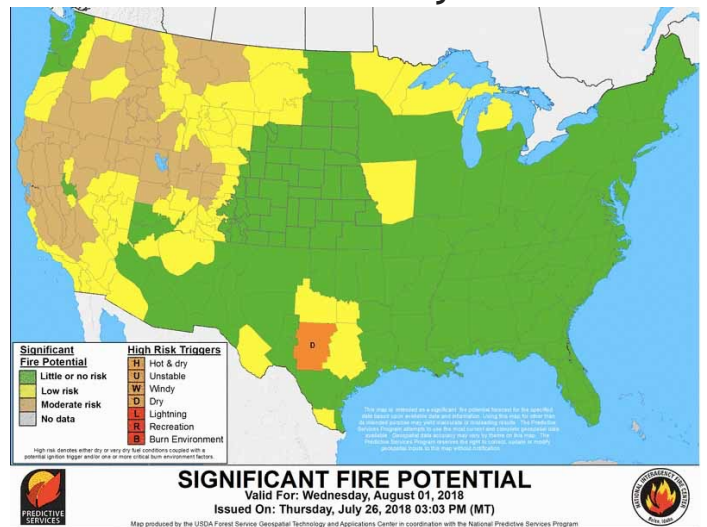
Monday



Tuesday



Wednesday



Source: <http://psgeodata.fs.fed.us/staticmap.html>

California Current Air Quality Map



Source: https://www.airnow.gov/index.cfm?action=airnow.local_state&stateid=5&mapcenter=0&tabs=0

Legend: AQI = Air Quality Index; PM = Particulate Matter; O₃ = Ozone

Air Quality Index Basics Overview: <https://airnow.gov/index.cfm?action=aqibasics.aqi>

Stoney Fire - Butte County

— FINAL —

Acres Burned [Change]	% Contained [Change]
962 (1) [+0]	100% (1) [+2%]

Start Date	Estimated Containment Date
July 12, 2018 (1)	-

Lead Agency(ies)
Chico City Fire (1)

Location
Bidwell Park, Upper Park Rd, Chico (1)



Structures Threatened	Structures Destroyed
-	None (2,3)

Evacuations
-

Other Infrastructure Threats
-

Projected Fire Activity
-

Cause of the Fire
Unknown (3)

Hashtags
#StoneyFire

Fire Maps
No fire perimeter maps located.
Impacted Zip Codes: 95928, 95973
Nearby Zip Codes: n/a

Information Sources

- 1) Cal Fire Incident Page - Stoney Fire: http://www.fire.ca.gov/current_incidents/incidentdetails/Index/2133 (Updated: July 22, 2018 7:01am)
- 2) National Interagency Coordination Center Incident Management Situation Report Thursday, July 19, 2018 - 0530 MT
- 3) Northern California Geographic Coordination Center Short Briefing 209 Summary Report - Stoney Fire (Updated: July 19, 2018 5:58pm)

Marsh Fire - Contra Costa County

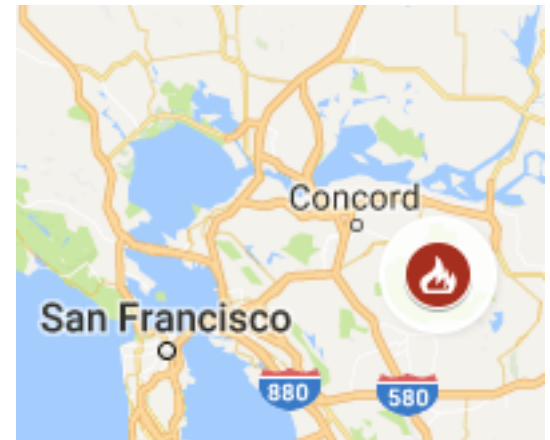
— Newly Added Fire —

Acres Burned [Change]	% Contained [Change]
247 (1)	75% (1)

Start Date	Estimated Containment Date
July 25, 2018 (1)	Not listed

Lead Agency(ies)
Unified Command: CAL FIRE Santa Clara Unit & East Contra Costa Fire (1)

Location
Marsh Creek Rd and Bragdon way, east of Mount Diablo (1)



Structures Threatened	Structures Destroyed
13 (1)	1 residence, 3 outbuildings (1)

Other Infrastructure Threats
Powerlines remain threatened. (2) Possible cell sites at risk (3)

Projected Fire Activity
Fire Fighters continued to make good progress today. Cooler overnight temperatures will continue to aid fire fighters on the ground in order to increase containment. (1)

Cause of the Fire
Under investigation (1)

Hashtags
#MarshFire

Fire Maps
A detailed map of the fire area in Contra Costa County. Marsh Creek Rd is highlighted in red. The map shows the fire area near Walnut Creek, Alamo, and Danville. A red fire icon is placed near Marsh Creek Rd.
Source: NASA FIRMS Map (fire activity on July 26, 2018)
Impacted Zip Codes: 94517
Nearby Zip Codes: n/a (fairly central in the impacted zip code)
FMAGS: 07/25/18, an FMAG was received and at at 2110 hours, the FMAG request was placed on hold by the Incident Commander and will be resubmitted if the fire situation changes.

Evacuations

Mandatory Evacuation Order: - Marsh Creek Road from Morgan Territory Road to Gill Drive.
Evacuation Center(s): Clayton Library Meeting Room, 6125 Clayton Road, Clayton and Brentwood Community Center, 35 Oak Street, Brentwood (1)

Road Closures & Restrictions

Road Closures: Marsh Creek Road at Gill Drive; Marsh Creek Road at Morgan Territroy Rd
Road Restrictions: Marsh Creek Road between Deer Valley & Gill Drive open to residence with ID only (1)

Information Sources

- 1) Cal Fire Incident Page - Marsh Fire: http://www.fire.ca.gov/current_incidents/incidentdetails/Index/2170 (Updated: July 26, 2018 6:05 pm)
- 2) Northern California Geographic Coordination Center - News & Notes - Marsh Fire: <https://gacc.nifc.gov/oncc/news.php> (Updated: July 26, 2018 7:01pm)
- 3) Cal OES Daily Situation Report - July 26, 2018

Natchez Fire - Del Norte & Siskiyou Counties

— Newly Added Fire —

Acres Burned [Change]	% Contained [Change]
2,738 (1)	Not listed
Start Date	Estimated Containment Date
July 15, 2018 (1)	August 31, 2018 (1)
Lead Agency(ies)	
U.S. Forest Service (1)	
Location	
15 miles southeast of Cave Junction, OR, and 3 miles south of the CA/OR State Line. (1)	



Structures Threatened	Structures Destroyed
None listed	None listed

Evacuations
None (2)

Other Infrastructure Threats
None listed

Projected Fire Activity
<p>High temperatures and very low relative humidity values combined with extremely dry fuels led to a day of very active fire behavior.</p> <p>The fire was most active yesterday on the southeast corner of the fire near Poker Mountain.</p> <p>Forecasters expect similar conditions today and tomorrow with a potential to cool off a little this weekend. (2)</p>

Cause of the Fire
Lightning (1)

Hashtags
#NatchezFire

Fire Maps

Source: [Cal Fire 2018 Incident Map](#) (July 25, 2018 2:39am)

Source: [National Interagency Fire Center Map](#) (July 26, 2018)

Impacted Zip Codes: 96039

Nearby Zip Codes: n/a (fairly central in the impacted zip code)

Information Sources

- 1) InciWeb Incident Page - Natchez Fire: <https://inciweb.nwcg.gov/incident/5948/> (Updated: July 26, 2018 9:25am)
- 2) InciWeb - Natchez Fire Update: <https://inciweb.nwcg.gov/incident/article/5948/44399/> (Updated: July 26, 2018 around noon)

Georges Fire - Inyo County

Acres Burned [Change]	% Contained [Change]
2,883 (1) [-5]	70% (1) [+28%]
Start Date	Estimated Containment Date
July 8, 2018 (1)	Not listed
Lead Agency(ies)	
Inyo National Forest Service (1)	
Location	
North of Lone Pine, west of Manzanar (1)	



Structures Threatened	Structures Destroyed
None (1)	None (1)

Evacuations
None (1)

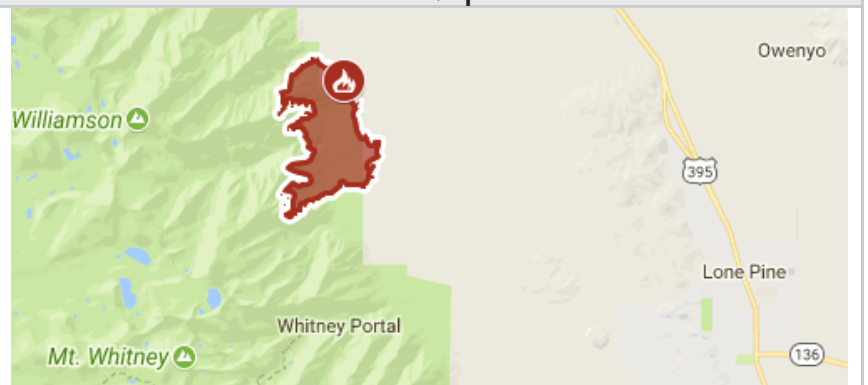
Other Infrastructure Threats
There is currently no threat to life or property. (1)

Projected Fire Activity
Much of the western fireline of the Georges Fire is in steep, inaccessible terrain as the fire burned into the mountains of the Eastern Sierra. Firefighters cannot access this flank of the fire. As such, firefighters are using a confinement strategy in this area. There may be continued fire activity as fuels dry out and fire activity picks up. The fire will eventually "rock out" as the fire reaches the granite cliffs and the absence of fuel. (1)

Cause of the Fire
Lightning (1)

Hashtags
#GeorgesFire

Fire Maps



Source: [Cal Fire 2018 Incidents Map](#) (July 13, 2018)*

* Most recent perimeter map data available, not much growth since then.

Impacted Zip Codes: 93545

Nearby Zip Codes: 93526

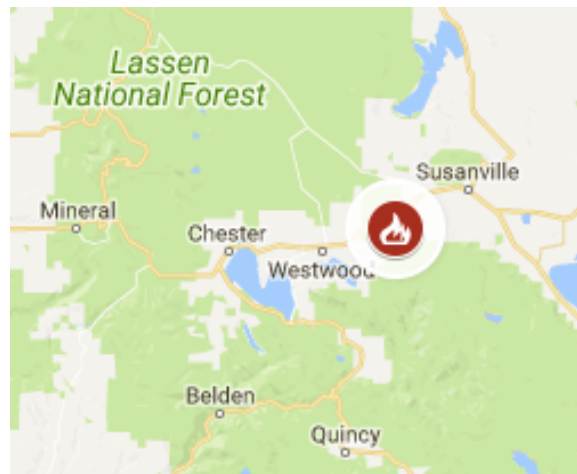
Information Sources

- 1) InciWeb Incident Page - Georges Fire: <https://inciweb.nwcg.gov/incident/5907> (Updated: July 24, 2018 11:14am)

Roxie Fire - Lassen County

— Newly Added Fire —

Acres Burned [Change]	% Contained [Change]
167 (1)	70% (1)
Start Date	Estimated Containment Date
July 24, 2018 (1)	July 27, 2018 (3)
Lead Agency(ies)	
CAL FIRE Lassen-Modoc Unit / Lassen National Forest (1)	
Location	
Roxie Peconom Campground, west of Willard Cr, 10 mi west of Susanville (1)	



Structures Threatened	Structures Destroyed
None (3)	None (2,3)
Evacuations	
None (2,3)	
Other Infrastructure Threats	
Structure threat has been mitigated (4)	
Projected Fire Activity	
The fire line is secured (1)	
Cause of the Fire	
Unknown (3)	
Hashtags	
#RoxieFire	

Fire Maps
<p>Source: National Interagency Fire Center Map (July 26, 2018)</p>
Impacted Zip Codes: not a clearly defined zip code area
Nearby Zip Codes: 96130, 96137

Information Sources

- 1) Cal Fire Incident Page - Roxie Fire: http://www.fire.ca.gov/current_incidents/incidentdetails/Index/2168 (Updated: July 26, 2018 7:49 pm)
- 2) Cal Fire Incident Update - Roxie Fire: http://cdfdata.fire.ca.gov/pub/cdf/images/incidentfile2168_3668.pdf (Updated: July 26, 2018 7:00am)
- 3) Northern California Geographic Coordination Center Short Briefing 209 Summary Report - Roxie Fire (Updated: July 26, 2018 6:17pm)
- 4) Cal OES Daily Situation Report - July 26, 2018

Lions Fire - Madera County

Acres Burned [Change]	% Contained [Change]
4,267 (3) [+203]	92% (3)* [+7%]

*Note: Per the Cal Fire website this fire had previously been listed as 100% contained. Updated Inciweb and National Interagency Fire Center data show the fire as not fully contained.

Start Date	Estimated Containment Date
June 1, 2018 (1)	August 25, 2018 (2)

Lead Agency(ies)
Sierra National Forest (1)

Location
7 miles southwest of Mammoth Lakes. (1); near the Lion Point area in the Ansel Adams Wilderness (2)

Structures Threatened	Structures Destroyed
None (1,3)	None (1,3)

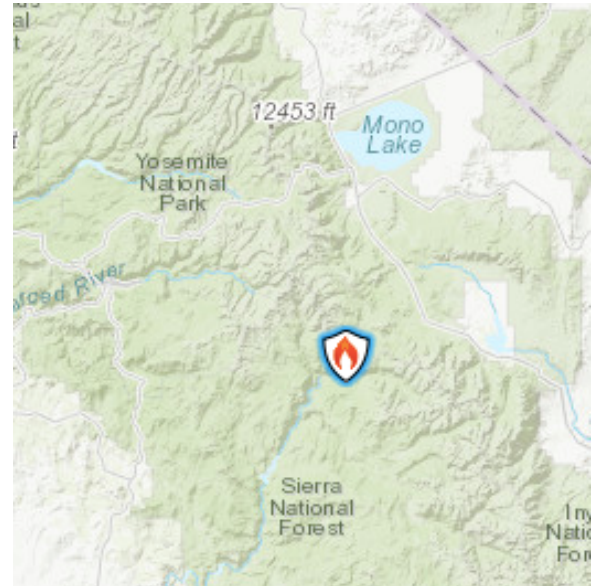
Evacuations
None (1)

Other Infrastructure Threats
None (1)

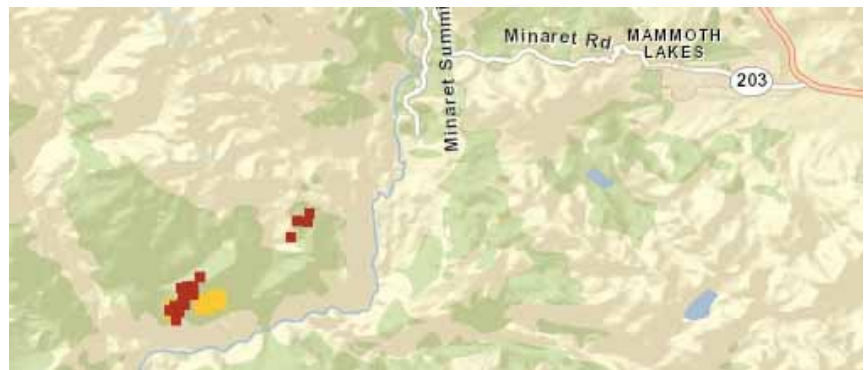
Projected Fire Activity
Active fire behavior with short-range spotting, flanking and isolated torching. (2)
Previously managed fire, now full suppression strategy due to increased activity (4)

Cause of the Fire
Lightning Strike (1)

Hashtags
#LionsFire



Fire Activity Map



Source: [NASA FIRMS Map](#) (fire activity on July 26, 2018)

Information Sources

- 1) InciWeb Incident Page - Lions Fire: <https://inciweb.nwcg.gov/incident/5850/> (Updated: July 26, 2018 2:52pm)
- 2) National Interagency Coordination Center Incident Management Situation Report Thursday, July 26, 2018 - 0530 MT
- 3) Southern California Geographic Coordination Center Situation Report - Lions Fire (Updated: July 26, 2018 7:03pm)
- 4) Southern California Geographic Coordination Center - News & Notes - Lions Fire: <https://gacc.nifc.gov/oscc/news.php> (Updated: July 26, 2018 7:00pm)

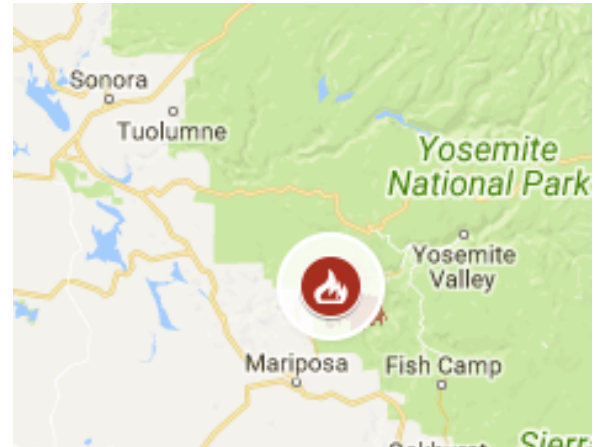
Ferguson Fire - Mariposa County

Acres Burned [Change]	% Contained [Change]
44,223 (1) [+22,682]	27% (1) [+20%]

Start Date	Estimated Containment Date
July 13, 2018 (1)	August 15, 2018 (2)

Lead Agency(ies)
Unified Command: CAL FIRE, USFS Sierra National Forest and Mariposa County Sheriff (1)

Location
Highway 140 and Hite Cove, near El Portal (1)



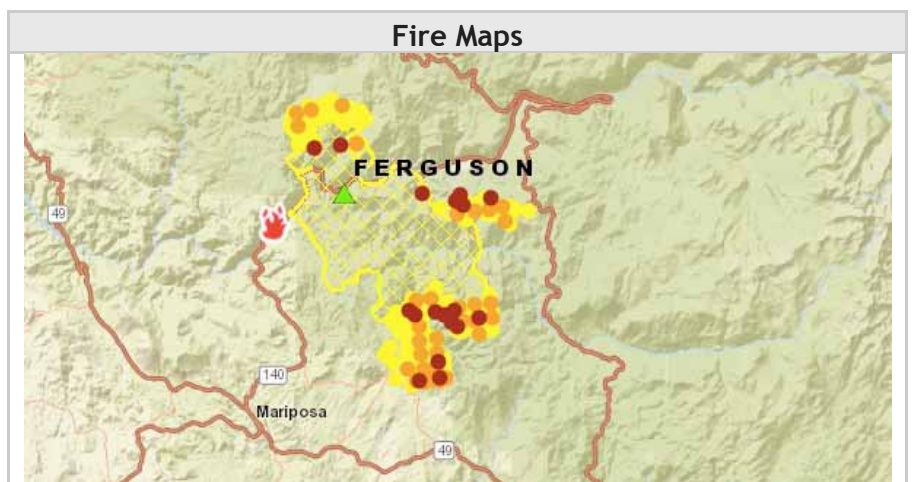
Structures Threatened	Structures Destroyed
5,236 (5) of which 5,171 are residences (10)	1 other structure (10)

Other Infrastructure Threats
Road Closures - see next page Transmission lines threatened (2,6)

Projected Fire Activity
Moderate fire behavior with backing, flanking and group torching. (2)
Fire is burning in a high tree mortality area (4)
The inversion lifted at the end of the operational period, resulting in an increase in fire behavior. (5)
This area has a history of producing very rapid rates of spread when fire comes into alignment with wind and topography under northwestern wind flow. The 1961 Harlow fire burned 20,000 acres in 2 hours (5)

Cause of the Fire
Unknown (3)

Hashtags
#fergusonfire



Source: [National Interagency Fire Center Map \(July 26, 2018\)](#)



Source: [Cal OES 2018 Incident Map \(July 25, 2018 5:05am\)](#)

Impacted Zip Codes: 95311, 95318, 95338, 95345, 95389

Nearby Zip Codes: 93623, 95321

Continued on Next Page

Ferguson Fire - Mariposa County (continued)

Evacuations

Evacuations orders:

- Cedar Lodge (6,7)
- Savage's Trading Post (6,7)
- Sweetwater Ridge - LIFTED (8), *another source still lists as advisory* (7)
- El Portal (6,7)
- Incline Road (6) from Foresta Bridge to the last BLM campground (7)
- Old El Portal (6,7)
- Rancheria Flat-Government Housing (6,7)
- Foresta (6,7)
- Yosemite West (6,7)
- Anderson Valley area (6,7)
- Big Grizzly Flat (6)
- Little Grizzly Flat (6)
- Old Yosemite Road (6,7)
- Lushmeadows Subdivision (6,7)
- Ponderosa Basin Subdivision (6,7)
- East Westfall (6) Road to Chowchilla (7)
- Triangle Road from Darrah to State Route 49 south to include all side roads (6,7)
- Mountain Road, and all side roads (7)
- Tip Top Road from Triangle Road to Gunther Road, including Gunther Road (7)
- Yosemite View Lodge (7)

Advisory Evacuations:

- Darrah Road from Triangle Road to Sherrod Road (7)
- East side of Highway 49 South from Darrah Road to Triangle Road. This includes Boyer Road, Woodland Area, Wass Road and Tip Top Road. (7)
- Mariposa Pines/Jerseydale Road (7)
- Triangle Road from Jerseydale Road to Highway 49 South, including all side roads (7)
- Highway 49 South from Stumpfield Mountain Road to the Mariposa-Madera County Line, including Kemble Road, Stumpfield Mountain Road and Watt Road (7)
- Sweetwater Ridge (7), *Lifted according to one source* (8)

Evacuation Center:

- Mariposa County Elementary School, 5044 Jones St., Mariposa (4,7)
- Mt. Christian School, 40299 CA-49, Oakhurst (4)

Small Animal Shelter: SPCA of Mariposa County: 5599 CA-49, Mariposa, CA 95338 (4)

Large Animal Shelter: Mariposa County Fairgrounds: 5007 Fairgrounds Rd, Mariposa, CA 95338 and Coarsegold Rodeo Grounds (standby): 44777 Rodeo Grounds Ln., Coarsegold (4)

Mariposa County Human Services has set up a dedicated line for residents with Access and Functional Needs who may need assistance in evacuating. Toll free number is 1-833-423-0816 (4)

Road Closures

Highway 140 is closed from the entrance of Yosemite National Park to 1.5 miles east of Midpines. Incline Road, River Road from Briceburg to the gate at Railroad Flat and all Campground areas along Highway 140 closed. Hites Cove/Jerseydale Road, Foresta Road, Anderson Valley Road, Summit Road and Old Yosemite Road. (7)

Triangle Road from Darrah Road to Highway 49 South; East Westfall Road. (7)

Chowchilla Mountain Road at Highway 49 South, Harris Road at Highway 49 South, Tip Top Road from Triangle Road to Gunther Road, all roads inside the Lushmeadows subdivision, and all roads inside the Ponderosa Basin subdivision. (7)

Wawona Road (Highway 41) between Chilnualna Falls Road in Wawona and Bridalveil Falls Road in Yosemite Valley. (7)

Continued on Next Page

Ferguson Fire - Mariposa County (continued)

Other Infrastructure Threats

Power Outage to 500+ customers. PG&E is unable to access the affected equipment due to the fire (8)

Proclamations

- On 07/15/18, Mariposa County submitted a Proclamation of Local Emergency. The county is requesting CDAA to assist with recovery efforts. (4)
- On 07/19/18, Mariposa County submitted the Ratified Proclamation. (4)
- On 07/26/18 Declared a State of Emergency for Mariposa County was issued by the Governor (10)

Additional Information Sources

Mariposa County Website: <http://www.mariposacounty.org>

Mariposa County Sheriff's Office Facebook: <https://www.facebook.com/mariposacountysheriff/>

CAL FIRE Madera-Mariposa-Merced Facebook: <https://www.facebook.com/CALFIREMMU/>

Mariposa County Recovers Website: <http://www.mariposacountyrecovers.org>

Operations Map for July 26, 2018: <https://inciweb.nwcg.gov/incident/map/5927/1/>

Public Information Map for July 26, 2018: <https://inciweb.nwcg.gov/incident/map/5927/2/>

Information Sources

- 1) Cal Fire Incident Page - Ferguson Fire: http://www.fire.ca.gov/current_incidents/incidentdetails/Index/2135 (Updated: July 26, 2018 7:02 pm)
- 2) National Interagency Coordination Center Incident Management Situation Report Thursday, July 26, 2018 - 0530 MT
- 3) InciWeb Incident Page - Ferguson Fire: <https://inciweb.nwcg.gov/incident/5927/> (Updated: July 26, 2018 9:06pm)
- 4) Cal OES Daily Situation Report - July 26, 2018 10:00am
- 5) Southern California Geographic Coordination Center Situation Report - Ferguson Fire (Updated: July 26, 2018 5:26pm)
- 6) Southern California Geographic Coordination Center - News & Notes - Ferguson Fire: <https://gacc.nifc.gov/oscc/news.php> (Updated: July 26, 2018 7:00pm)
- 7) InciWeb - Ferguson Fire Evening Update for July 26, 2018: <https://inciweb.nwcg.gov/incident/article/5927/44431/> (Updated: July 26, 2018 about 6:30pm)
- 8) PG&E Outage Map: <https://m.pge.com/#outages> (Updated: July 26, 2018 9:51pm)
- 9) Mariposa County Recovers - Alerts & Advisories: <http://www.mariposacountyrecovers.org/alerts-and-advisories.html> (Updated: July 26, 2018)
- 10) Cal OES 2018 July Statewide Fires Situation Report - 07/26/2018 as of 1600 hours

Eagle Fire - Modoc County

— FINAL —
BLM no longer providing updates

Acres Burned [Change]	% Contained [Change]
2,100 (1) [+0]	95% (1) [+5%]

Start Date	Estimated Containment Date
July 13, 2018 (1)	No longer listed

Lead Agency(ies)
BLM Northern California District (1)

Location
15 miles south of Cedarville, Ca (1)



Structures Threatened	Structures Destroyed
None listed	None listed

Evacuations
None listed

Other Infrastructure Threats
None listed

Projected Fire Activity
Fire activity has been minimal. (1)

Cause of the Fire
Unknown (1)

Hashtags
#eaglefire

Fire Maps
<p>Source: Cal Fire 2018 Incident Map (July 14, 2018)* * Most recent perimeter map on Cal Fire Incident Map</p>
<p>Impacted Zip Codes: 96110</p>
<p>Nearby Zip Codes: n/a</p>

Information Sources

- 1) InciWeb Incident Page: Eagle Fire: <https://inciweb.nwcg.gov/incident/5926/> (Updated: July 21, 2018 4:11pm)

Cranston Fire - Riverside County

– Newly Added Fire –

Acres Burned [Change]	% Contained [Change]
7,500 (1)	5% (6)

Start Date	Estimated Containment Date
July 25, 2018 (1)	August 8, 2018 (2)

Lead Agency(ies)
Unified Command: U.S. Forest Service, CAL FIRE - Riverside County Fire, Idyllwild Fire Protection District and Riverside County Sheriff's Office (6)

Location
off Highway 74 and Control Road, east of Hemet (1); Idyllwild, mountain Center, Highway 243 and Highway 74 (4)

Structures Threatened	Structures Destroyed
4,927 (4); of which 4,830 are residences (9)	None (4)

Other Infrastructure Threats
Sewer treatment plant threatened (5) Southern California Edison has about 4,000 customers without power and Anza Electric Cooperative about 5,200 customers (8) Road Closures - See next page

Projected Fire Activity
Extreme fire behavior with wind driven runs and spotting (5)

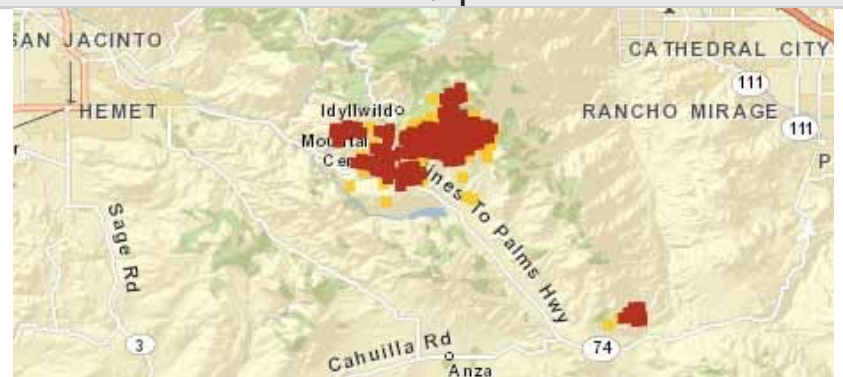
Cause of the Fire
Arson (6)

Proclamations & FMAG
On 07/26/18 Declared a State of Emergency for Riverside County was issued by the Governor (9) 07/25/18, an FMAG was received from the incident and approved by FEMA; FMAG-5260. (7)

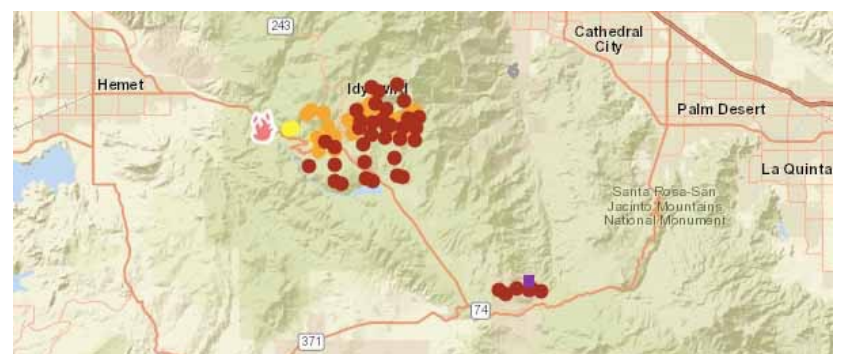
Hashtags
#CranstonFire



Fire Maps



Source: [NASA FIRMS Map](#) (fire activity on July 26, 2018)



Source: [National Interagency Fire Center Map](#) (July 26, 2018)

Impacted Zip Codes: 92544, 92549, 92561

Nearby Zip Codes: 92264

Continued on Next Page

Cranston Fire - Riverside County (continued)

Evacuations

Mandatory Evacuations: People Evacuated: 6,000 (6)

- Idyllwild (3, 6), southern portion (5)
- Mountain Center Community (3, 5, 6)
- Lake Hemet (3, 5)
- Hurkey Creek (3, 5, 6)
- Fern Valley (3, 5, 6)
- Apple Canyon (3, 5)
- San Jacinto State Park (3, 5, 6)
- Palm Springs Tram (5)
- Pine Cove (3, 5, 6)
- Cedar Glen (3, 5, 6)
- Camp Scherman Girlscout Camp (3)
- northern section of Garner Valley, All homes accessed from roads north of Hialeah Way, not including homes accessed via Hialeah Way (6)

Evacuation Warning: Southside of Garner Valley, All homes south of Hialeah Way, including homes accessed from Hialeah Way, are under evacuation warning through just south of Highway 371 (6)

Evacuation Center: Banning High School, 100 W. Westward Ave, Banning (3)

Small Animal Shelter: San Jacinto Valley Animal Campus, can also be dropped off at Dysart Equestrian Park to the San Jacinto Valley Animal Campus. (3)

Large Animal Shelter: Dysart Equestrian Park - 2101 W Victory Ave, Banning, and San Jacinto Valley Animal Campus(3)

Road Closures

- Highway 74 is closed from Cranston Station to Highway 371. (6)
- Highway 243 is closed from Banning to Highway 74, residents north of Marion Ridge Drive with ID can enter at Banning (6)

Information Sources

- 1) Cal Fire Incident Page - Cranston Fire: http://www.fire.ca.gov/current_incidents/incidentdetails/Index/2169 (Updated: July 26, 2018 4:30 pm)
- 2) National Interagency Coordination Center Incident Management Situation Report Thursday, July 26, 2018 - 0530 MT
- 3) InciWeb Incident Page - Cranston Fire: <https://inciweb.nwcg.gov/incident/6032/> (Updated: 8:30pm)
- 4) Southern California Geographic Coordination Center Situation Report - Cranston Fire (Updated: July 26, 2018 5:02pm)
- 5) Southern California Geographic Coordination Center - News & Notes - Cranston Fire: <https://gacc.nifc.gov/oscc/news.php> (Updated: July 26, 2018 7:00pm)
- 6) InciWeb - Cranston Fire Evening Update 07_26_2018: <https://inciweb.nwcg.gov/incident/article/6032/44437/> (Updated: July 26, 2018 10:40pm)
- 7) Cal OES Daily Situation Report - July 26, 2018
- 8) Southern California Edison - Major Outage Information: <https://www.sce.com/wps/portal/home/outage-center/major-outages/> (Updated: July 26, 2018 8:00pm)
- 9) Cal OES 2018 July Statewide Fires Situation Report - 07/26/2018 as of 1600 hours

Ribbon Fire - Riverside County

— Newly Added Fire —

Acres Burned [Change]	% Contained [Change]
200 (2)	5% (4)
Start Date	Estimated Containment Date
July 26, 2018 (1)	Not listed
Lead Agency(ies)	
Bureau of Indian Affairs - CAL FIRE / Riverside County Fire (1)	
Location	
Highway 74 and Ribbonwood Dr. near Pinyon (1)	



Structures Threatened	Structures Destroyed
Yes (2)	None listed

Evacuations
Evacuation warnings are in place for Alpine Village, Pinyon Crest, Pinyon Pines. The evacuation warning will be re-evaluated tomorrow, 7/27/18 at 5 p.m. (4)

Other Infrastructure Threats
None listed

Projected Fire Activity
Moderate spread (3)

Cause of the Fire
Under Investigation (4)

Hashtags
#RibbonFire

Fire Maps
Source: NASA FIRMS Map (fire activity on July 26, 2018)
Impacted Zip Codes: 92561
Nearby Zip Codes: 92539

Information Sources

- 1) Cal Fire Incident Page - Ribbon Fire: http://www.fire.ca.gov/current_incidents/incidentdetails/Index/2174 (Updated: July 26, 2018 1:30 pm)
- 2) Southern California Geographic Coordination Center - News & Notes - Ribbon Fire: <https://gacc.nifc.gov/oscc/news.php> (Updated: July 26, 2018 7:00pm)
- 3) Southern California Geographic Coordination Center - News & Notes - Ribbon Fire: <https://gacc.nifc.gov/oscc/news.php> (Updated: July 26, 2018 3:45pm)
- 4) Riverside County Fire Department - Ribbon Fire Fact Sheet: http://www.rvcfire.org/_Layouts/Incident%20Information/IncidentInfoDetail.aspx?4282 (Updated: July 26, 2018 9:38pm)

Skyline Fire - Riverside County

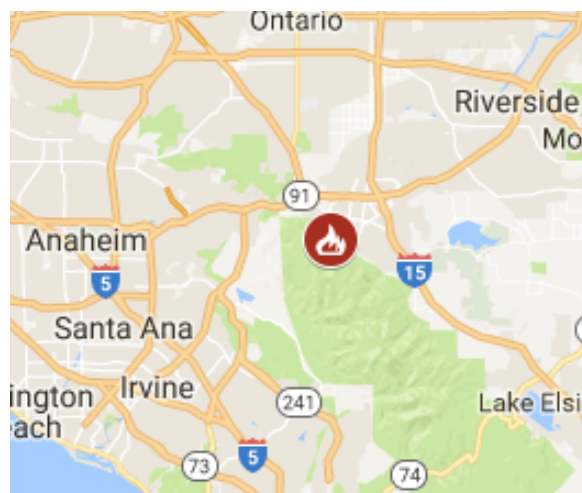
— FINAL, unless new information becomes available —

Acres Burned [Change]	% Contained [Change]
282 (1) [+32]	95% (1) [+90%]

Start Date	Estimated Containment Date
July 19, 2018 (1)	Not listed

Lead Agency(ies)
Unified Command: CAL FIRE/Riverside County Fire Department and Corona City Fire (1)

Location
off Skyline Drive and Burrero Way, in an unincorporated county area west of Corona City (1)



Structures Threatened	Structures Destroyed
None (2)	None (2)

Evacuations
None listed

Other Infrastructure Threats
None listed

Projected Fire Activity
None listed

Cause of the Fire
None listed

Hashtags
#SkylineFire

Fire Maps
No map data found.
Impacted Zip Codes: 92882
Nearby Zip Codes: 92676, 92880
Additional Information Sources
City of Corona - www.CoronaCA.gov/SkylineFire Corona Fire Department Twitter Feed: https://twitter.com/CoronaFireDept

Information Sources

- 1) Cal Fire Incident Page - Skyline Fire: http://www.fire.ca.gov/current_incidents/incidentdetails/Index/2154 (Updated: July 24, 2018 7:32 am)
- 2) City of Corona - Skyline Fire Safety Information: <https://www.coronaca.gov/government/departments-divisions/fire-department/skyline-fire> (Updated: July 23, 2018 7:30am)

Valley Fire - San Bernardino County

Acres Burned [Change]	% Contained [Change]
1,350 (3) [+2]	29% (3) [+0]
Start Date	Estimated Containment Date
July 6, 2018 (1)	November 1, 2018 (2)
Lead Agency(ies)	
San Bernardino National Forest (1)	
Location	
Forest Falls, CA (1)	



Structures Threatened	Structures Destroyed
None (3)	None (3)
Evacuations	
None listed	
Other Infrastructure Threats	
None listed	
Projected Fire Activity	
Minimal or no growth and very little or no fire spread (1), Minimal fire behavior (2)	
Cause of the Fire	
Under Investigation (1)	
Hashtags	
#ValleyFire	

Fire Maps
<p>Source: National Interagency Fire Center Map (July 26, 2018)</p>
Impacted Zip Codes: 92339
Nearby Zip Codes: 92399

Information Sources

- 1) InciWeb Incident Page - Valley Fire: <https://inciweb.nwcg.gov/incident/5900/> (Updated: July 21, 2018 9:59am)
- 2) National Interagency Coordination Center Incident Management Situation Report Thursday, July 26, 2018 - 0530 MT
- 3) Southern California Geographic Coordination Center Situation Report - Valley Fire (Updated: July 26, 2018 5:43pm)

Carr Fire - Shasta County

– Newly Added Fire –

Acres Burned [Change]	% Contained [Change]
28,763 (1)	6% (1)
Start Date	Estimated Containment Date
July 23, 2018 (1)	August 3, 2018 (3,4)
Lead Agency(ies)	
Unified Command: CAL FIRE Shasta-Trinity Unit / Whiskeytown National Park (1)	
Location	
Hwy 299 and Carr Powerhouse Rd, Whiskeytown (1); Hwy 299 @ Carr Powerhouse Rd near the community of French Gulch (4)	



Structures Threatened	Structures Destroyed
496 (1)	15 residences, 2 commercial buildings, 13 other minor structures (4)

Other Infrastructure Threats

Keswick hydro electric facility is threatened. (4)

Threat to electrical infrastructure, which if disrupted will affected the northwest portion of California including Eureka, Weaverville and Fortuna. (4);

6,000 PG&E customers are without electricity in the Carr Fire Area (7)

Telecommunications infrastructure threatened (7)

Iron Mountain Mine, a superfund site (4)

Road Closures on next page

Projected Fire Activity

Extreme fire behavior with crowning, uphill runs and spotting. (3);

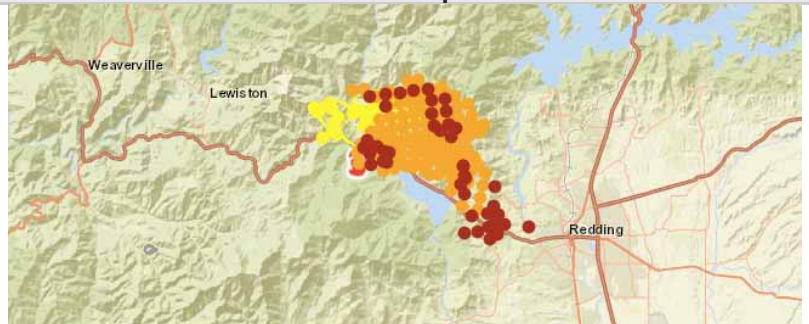
Cause of the Fire

Mechanical Failure of Vehicle (1)

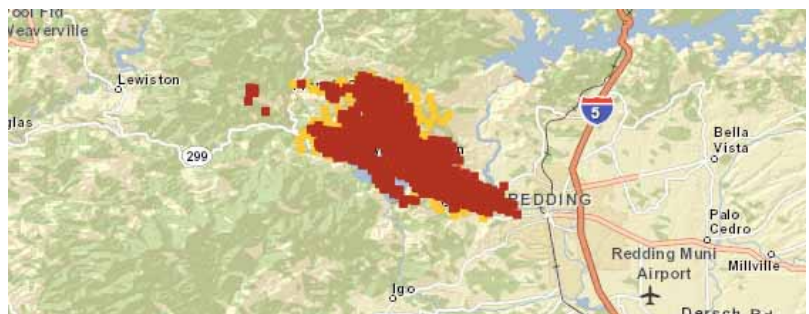
Hashtags

[#CarrFire](#)

Fire Maps



Source: [National Interagency Fire Center Map](#) (July 26, 2018)



Source: [NASA FIRMS Map](#) (fire activity on July 26, 2018)

Impacted Zip Codes: 96001, 96003, 96033, 96087, 96095

Nearby Zip Codes: 96002, 96007, 96019, 96047, 96052, 96079, 96089,

FMAG: On 07/23/18 at 1711 hours, an FMAG request was received from the Incident. On 07/23/18 at 2000 hours, the FMAG was approved- #FM-5259

Declaration: On 07/26/18 Declared a State of Emergency for Shasta County was issued by the Governor (7)

Continued on Next Page

Carr Fire - Shasta County (continued)

Evacuations

Mandatory Evacuations

- The community of French Gulch. (2, 4)
- SR 299 west of Trinity Mountain Rd to the base of Buckhorn Summit. (2)
- Whiskey Creek Rd to include the boat launch/day use areas. (2)
- Keswick; Victoria Highlands ; Old Shasta; Whiskeytown; Whiskey Creek (4)
- North of Sacramento River to Keswick Dam Road, West of Market Street & Lake Blvd to Keswick Dam. (1)
- North at Lake Blvd and Oasis Road to Pine Grove Ave and Walker Mine Road, West of Cascade Road/I-5. (1)
- South along Swasey Dr from SR 299 to Placer Rd. (1)
- West along Placer Rd From Swasey Dr to Prospect Dr (1)
- North from Prospect Dr to encompass Middle Park Ranch Land Area (1)
- West of Overhill Dr and North of SR 299 (1)
- North of SR 299 and West of Spinmaker Rd to the end of Harlan Dr (1)
- Keswick Dam East to Counter Lane, North to Quartz Hill Rd (1)

Evacuation Centers

- Residents east of Trinity Mountain Road: Shasta College 11555 Old Oregon Trail, Redding. Note - Shasta High School location is closed. (5)
- Residents west of Trinity Mountain Road: Weaverville Elementary School, 31020 HWY 3, Weaverville. (2)

Large Animal Shelter: Redding Rodeo Grounds 715 Auditorium Drive Redding (1)

Small Animal Shelter: Haven Humane 9417 East Side Drive Redding (1)

Road Closures

Road Closures per Cal Fire Website:

- SR 299 at Buckhorn (Trinity/Shasta County Line);
- SR 299 at JFK Drive (Whiskeytown.);
- Trinity Mountain Rd at SR 299;
- Whiskey Creek Rd at SR 299. (1)

Road Closures per National Interagency Coordination Center Incident Management Sit Rep:

- Hwy 299/Buenaventura Blvd
- Hwy 299/Countyline Road Keswick Dam Road @Keswick Dam Ridge Dr/Hwy 299
- Swasey Dr/Lower Springs Road Mule Town Road/ Placer Road

Additional Information Sources

Shasta County Sheriffs Office Facebook: <https://www.facebook.com/Shasta-County-Sheriffs-Office-1527637610823075/>

Information Sources

- 1) Cal Fire Incident Page - Carr Fire: http://www.fire.ca.gov/current_incidents/incidentdetails/Index/2164 (Updated: July 26, 2018 11:54 pm)
- 2) Cal Fire Incident Update - Carr Fire: http://cdfdata.fire.ca.gov/pub/cdf/images/incidentfile2164_3670.pdf (Updated: July 26, 2018 7:00am)
- 3) National Interagency Coordination Center Incident Management Situation Report Thursday, July 26, 2018 - 0530 MT
- 4) Northern California Geographic Coordination Center Short Briefing 209 Summary Report - Carr Fire (Updated: July 26, 2018 6:22pm)
- 5) Cal Fire News Release - New Evacuation Center Location: http://cdfdata.fire.ca.gov/pub/cdf/images/incidentfile2164_3674.pdf (Updated: July 26, 2018 9:00pm)
- 6) Cal OES Daily Situation Report - July 26, 2018
- 7) Cal OES 2018 July Statewide Fires Situation Report - 07/26/2018 as of 1600 hours

Klamathon Fire - Siskiyou County

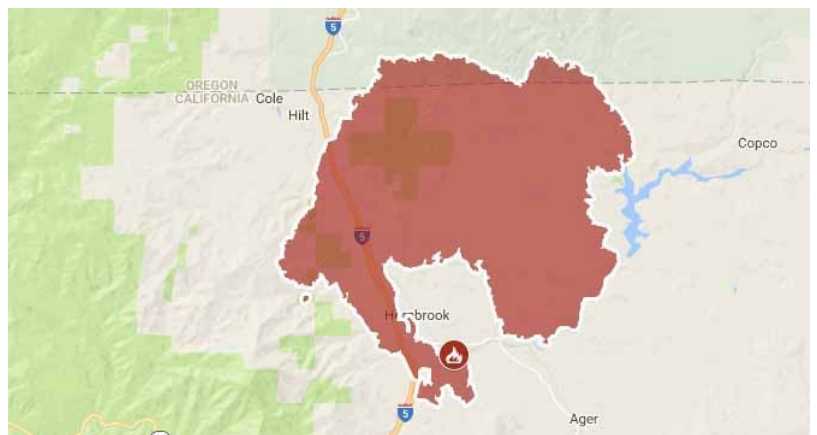
— FINAL —

Acres Burned [Change]	% Contained [Change]
38,008 (1) [+0]	100% (1) [+2%]
Start Date	Estimated Containment Date
July 5, 2018 (1)	-
Lead Agency(ies)	
CAL FIRE Siskiyou Unit (1)	
Location	
Off Klamathon Road and Copco Road, south of Hornbrook (1)	



Structures Threatened	Structures Destroyed
-	34 residences, 1 multiple residence, 3 commercial, 44 other minor structures (1,2)
Evacuations	
-	
Other Infrastructure Threats	
-	
Projected Fire Activity	
-	
Cause of the Fire	
Under Investigation (1)	
Hashtags	
#klamathonfire	

Fire Maps



Source: [Cal Fire 2018 Incidents Map](#) (July 14, 2018)

Impacted Zip Codes: 96044, 96064, 96097, 97520 (Oregon)

Nearby Zip Codes: n/a

Information Sources

- 1) Cal Fire Incident Page - Klamathon Fire: http://www.fire.ca.gov/current_incidents/incidentdetails/Index/2108 (Updated: July 23, 2018 7:02 am)
- 2) Northern California Geographic Coordination Center Short Briefing 209 Summary Report - Klamathon Fire (Updated: July 19, 2018 5:42pm)

Eighty-Eight Fire - Yolo County

— FINAL —

Acres Burned [Change]	% Contained [Change]
822 (1) [+2]	100% (1) [+10%]
Start Date	Estimated Containment Date
July 18, 2018 (1)	-
Lead Agency(ies)	
CAL FIRE Sonoma-Lake-Napa Unit (1)	
Location	
off County Road 88 and County Road 29, north of Winters (1)	



Structures Threatened	Structures Destroyed
-	None (2)
Evacuations	
-	
Other Infrastructure Threats	
-	
Projected Fire Activity	
-	
Cause of the Fire	
Unknown (2)	
Hashtags	
#EightyEightFire	

Fire Maps
No fire perimeter maps located.
Impacted Zip Codes: 95694
Nearby Zip Codes: n/a

Information Sources

- 1) Cal Fire Incident Page - Eighty-Eight Fire: http://cdfdata.fire.ca.gov/incidents/incidents_details_info?incident_id=2151 (Updated: July 22, 2018 6:59 am)
- 2) Northern California Geographic Coordination Center Short Briefing 209 Summary Report - Eighty-Eight Fire (Updated: July 20, 2018 6:09am)

Wildfire Resource Links

National Significant Wildland Fire Potential Outlook

https://www.predictiveservices.nifc.gov/outlooks/monthly_seasonal_outlook.pdf

Cal Fire Incident Page

http://www.fire.ca.gov/current_incidents

National Interagency Coordination Center Daily Situation Report (Fire)

<https://www.nifc.gov/nicc/sitreprt.pdf>

CalFire 2018 Wildfire Map

<https://www.google.com/maps/d/viewer?mid=1HacmM5E2ueL-FT2c6QMVzoAmE5M19GAf&hl=en&ll=37.421476393980626%2C-119.27200899999997&z=6>

National 7-Day Significant Fire Potential Map

<http://psgeodata.fs.fed.us/forecast/#/outlooks?state=map>

Air Quality Conditions - Fires Map

https://airnow.gov/index.cfm?action=topics.smoke_wildfires

CDC Wildfire Smoke Exposure

<https://www.cdc.gov/disasters/wildfires/smoke.html>

NOAA Hazard Mapping System Fire and Smoke Product

<http://www.ospo.noaa.gov/Products/land/hms.html>

Red Cross Disaster Shelter Locations

<http://www.redcross.org/get-help/disaster-relief-and-recovery-services/find-an-open-shelter>

USGS Emergency Assessment of Post-Fire Debris-Flow Hazards

https://landslides.usgs.gov/hazards/postfire_debrisflow/

The California Resiliency Alliance is a 501c3 non-profit empowering local and regional resiliency efforts through cross-sector information sharing and partnerships. The content in this brief provided for internal use by California Resiliency Alliance members. Copyright owners retain all copyrights to material referenced.