

# **SUSTAINABLE COMMERCE AND LIVING WITH A RISING SEA**

**.....what the maritime industry is doing about it.....**



Dilip Trivedi, Bay Planning Coalition  
Moffatt & Nichol, Walnut Creek, CA

SAME, Oct 2016

# San Francisco Bay – Major Seaports and Airports



## Ports/Marinas

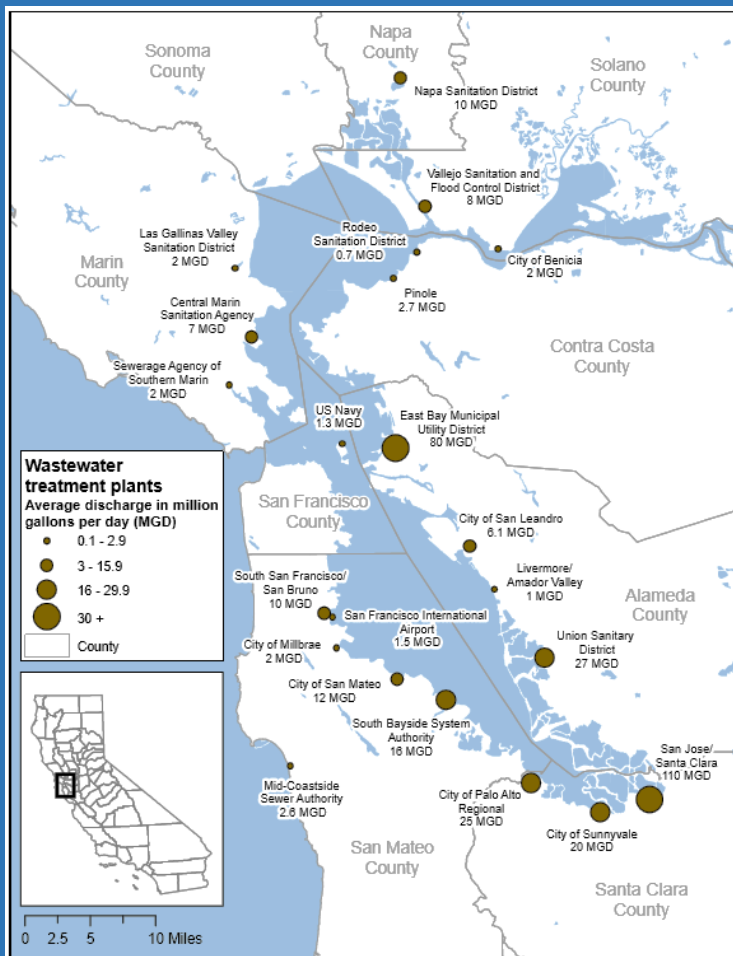
- Oakland, Richmond, Redwood City, Stockton, San Francisco
- Chevron, Valero, Tesoro
- Aggregates
- City/Private Marinas

## Impacts

- Jobs
  - Regional Investments/Economy
  - Recreation
- 
- Continued Dredging
  - Reliability of Transportation
  - Air Quality Compliance
  - Environmental Compliance



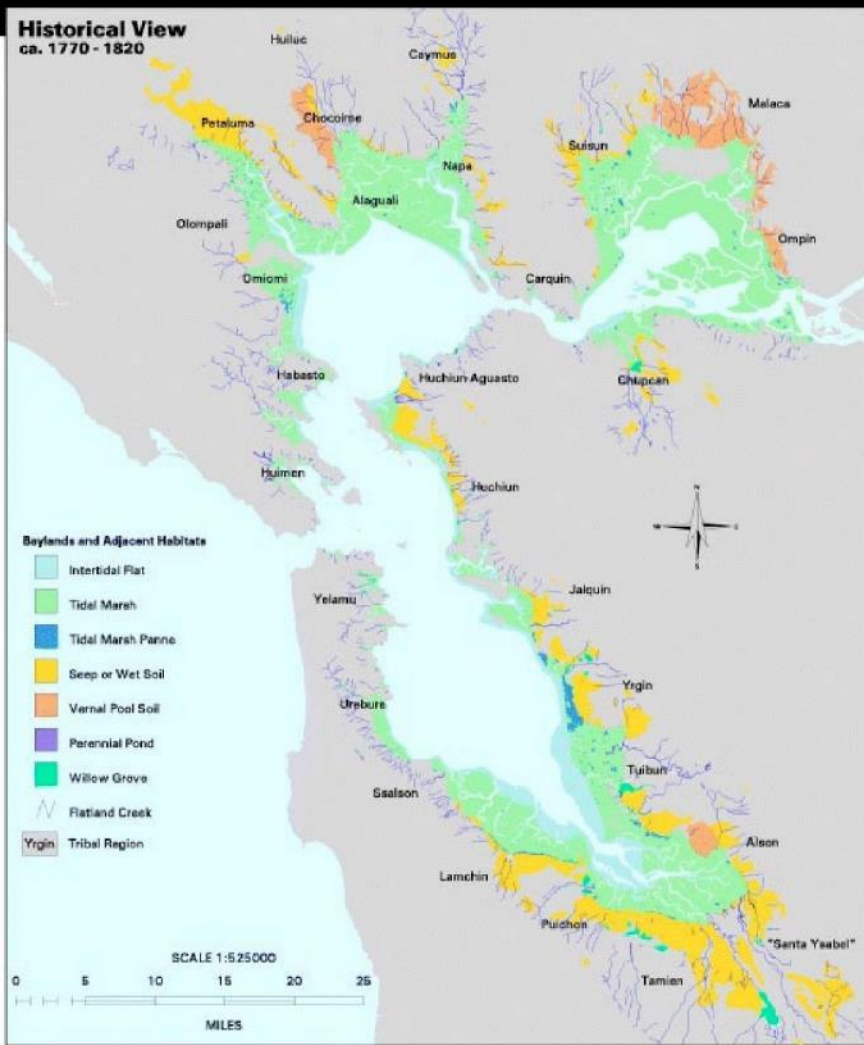
## San Francisco Bay – Major Infrastructure



- Wastewater Treatment Plants
- Power Plants
- Industry
- Housing
- Transportation

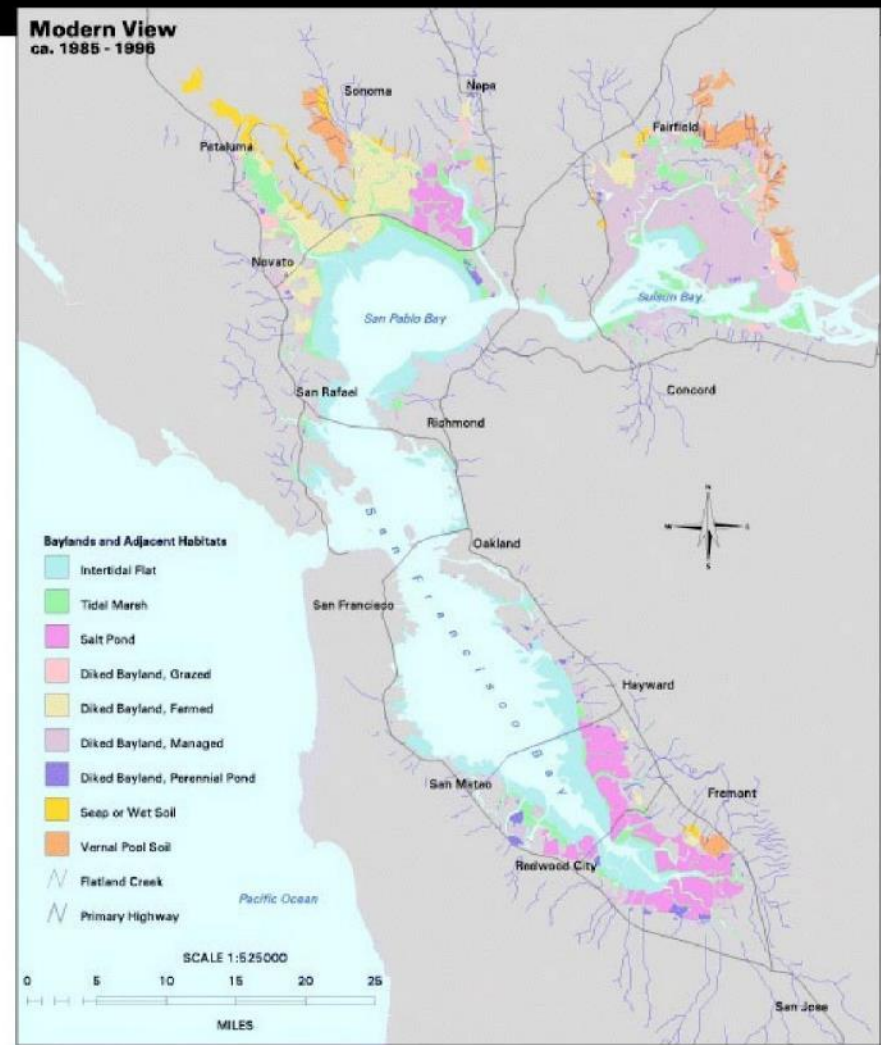


# San Francisco Bay - Past and Present



**Historical View Primary Sources:**  
US Coast Survey, US Geological Survey, US Department of Agriculture,  
Spanish diaries, explorers' journals, and local archives.  
Tribal Regions courtesy of Randall Milliken.

**Projection:**  
1927 North American Datum  
Universal Transverse Mercator Projection  
UTM Zone 10



**Modern View Primary Sources:**  
CA State Lands Commission, US Geological Survey,  
US Fish and Wildlife Service, US National Aeronautical  
and Space Administration, and local experts.

**Production:**  
Science coordination, GIS and Map Design  
by the San Francisco Estuary Institute  
Richmond, California <http://www.sfei.org>  
EcoAtlas 1.0 ©1997 SFEI



- **Over 90% of wetlands filled**
- **Declining sediment rates into estuary**

- Present morphology is levees fronted by mudflats
- No buffer for marsh progression



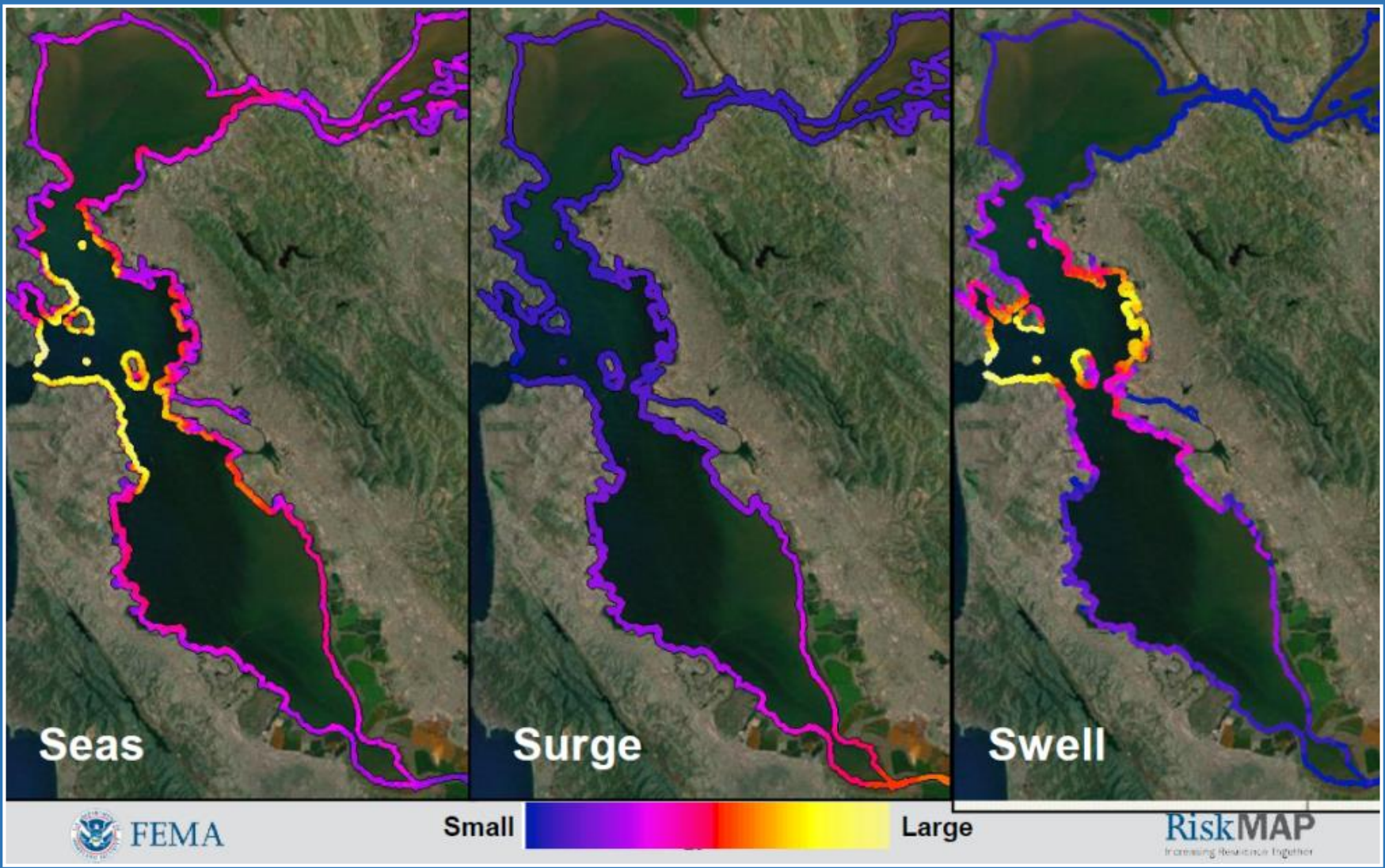
# Increased Awareness of Inundation Potential



*Inundation with 16" & 55" of SLR  
BCDC-Led Effort*



# FEMA Regionwide Floodplain Mapping



# Summary

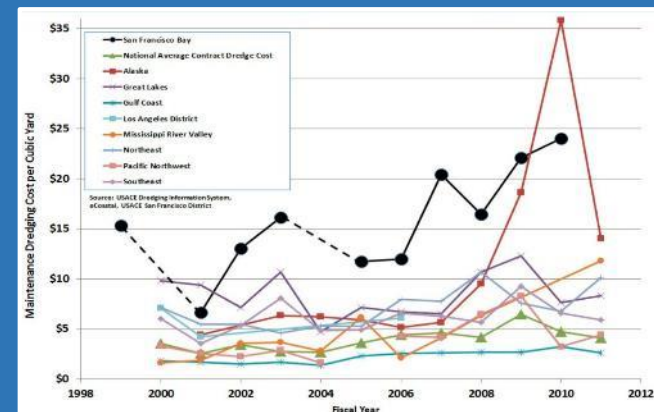
## Challenges

- Dredging
- Housing (Redevelopment)
- Continued Viability of Transportation Network
- Jurisdictional (53 cities with shoreline, 9 counties)
- Flood Control (by County or City)



## Potential Solutions

- Wetlands Restoration w/ Flood Control
- Regionwide Resiliency Planning
- Collaboration (Public + Private)
- Involve Private Sector



# Role of Bay Planning Coalition

- ✓ Focused specifically on SF Bay Area's economic interests and vitality
- ✓ Views the maritime industry as central to economic vitality of Region
- ✓ Provides visionary leadership to stakeholders to advance solutions for:
  - thriving economy
  - environment
  - community

## Mission:

- ✓ Provide expert advocacy and facilitation
- ✓ Work through a broad coalition
- ✓ Advance industrial economy
- ✓ Support sustainable environment





# Activities

- Active via formation of six committees
- Issue Specific Committees:
  - Dredging & Beneficial Reuse
  - Marinas, Boatyards, and Small Harbors
  - Sustainable Waterfronts
  - Water, Energy, & Infrastructure
  - Legislative & Policy
- Work to provide focused advocacy and strategy development on relevant topics
- Workshops, Briefings, Decision Makers Conference



## Participating In:

- BCDC Bay fill working group
- BCDC Sea Level Rise working group
- RMP Steering Committee
- POSF Waterfront Land Use Plan
- CCSF Sea Level Rise Guidance Document

## Legislative Activities:

- WRDA 2016 - language inserted into both the House and Senate bills, going to Conference Committee
- Held CEQA Update (4<sup>th</sup>)
- Held the Energy & Water Nexus Summit
- Actively Supporting Prop 67 and Measure RR
- Opposing Prop 53 and 65



# Example

## Beneficial Reuse of Dredged Material + Wetlands Restoration + Flood Control

- LTMS development and review
- lobbying for congressional approvals
- legislative proposals
- Regional General Permit white paper
- Regional Monitoring Plan review

## Sustainable Waterfronts

- representing members at various forums
- Preparing database of SLR related regulatory & CEQA policy
- preparing permit efficiency white paper

Montezuma Wetlands (2000 ac ongoing)  
Oakland 50' deepening, now maintenance



Hamilton Army Airfield (700 ac)  
Oakland 50' deepening

