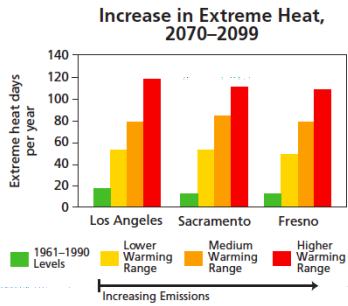
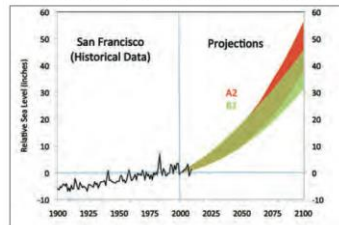


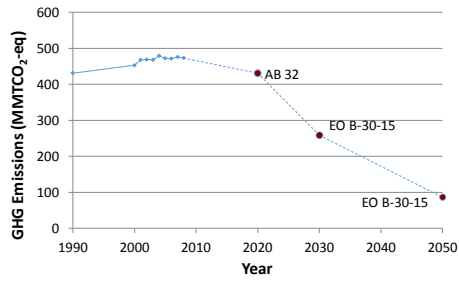
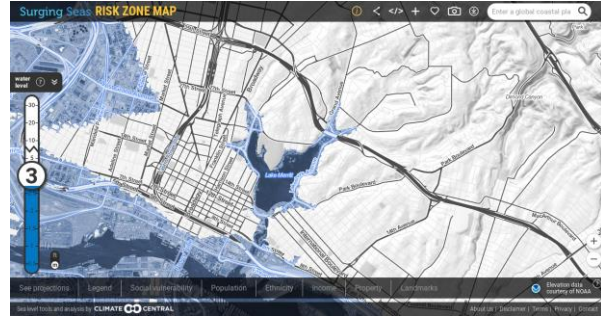
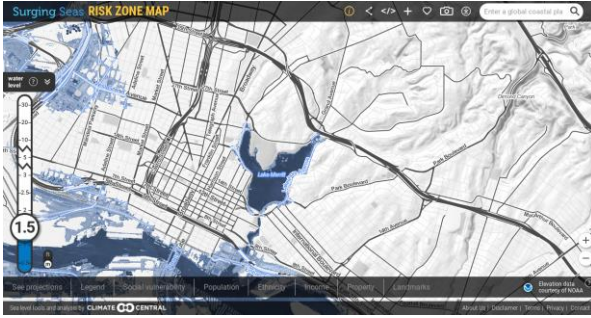
California is expected to experience dramatically warmer temperatures during this century. The figure shows projected increases in statewide annual temperatures for three 30-year periods. Ranges for each emissions scenario represent results from state-of-the-art climate models.

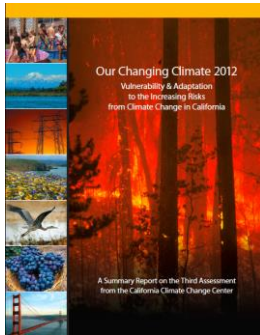


Sea-level rise: Historical Trend and Future Projections



Sea level along the California coast could be 10-18 inches higher in 2050 than in 2000, and 31-55 inches higher by the end of this century (depending on the emissions scenario). This represents a fourfold to eightfold increase in the rate of sea-level rise compared to what has been experienced historically.





## Principles for Adaptation

- Prioritize natural and green infrastructure

## Principles for Adaptation

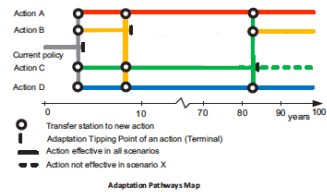
- Prioritize natural and green infrastructure
- Protect the most vulnerable

### Principles for Adaptation

- Prioritize natural and green infrastructure
- Protect the most vulnerable
- Link mitigation and adaptation to the fullest extent possible

### Principles for Adaptation

- Prioritize natural and green infrastructure
- Protect the most vulnerable
- Link mitigation and adaptation to the fullest extent possible
- Coordinate with local and regional partners



Source: Haasnoot et al, 2013

