



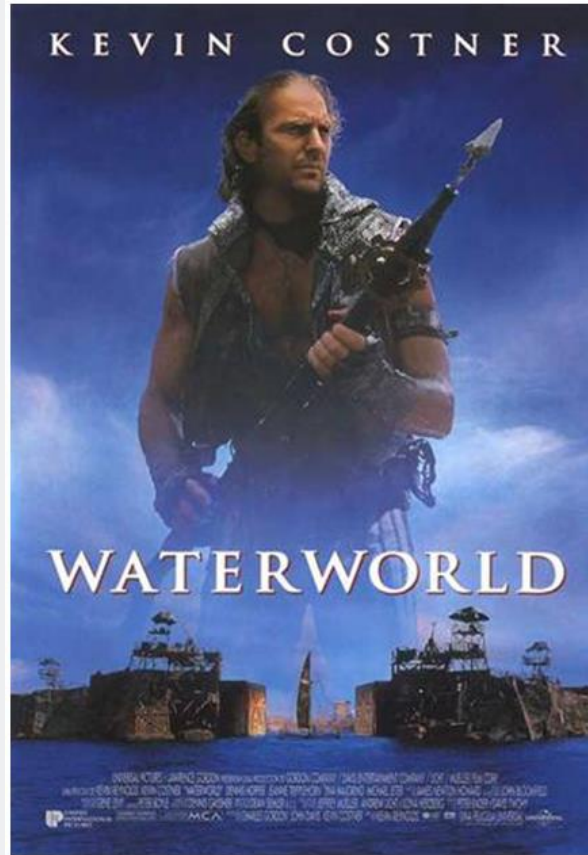
May 16, 2014

**Maritime and Waterfront
Industries of San Francisco
Bay: Keys to a Thriving
Economy and Healthy
Environment**

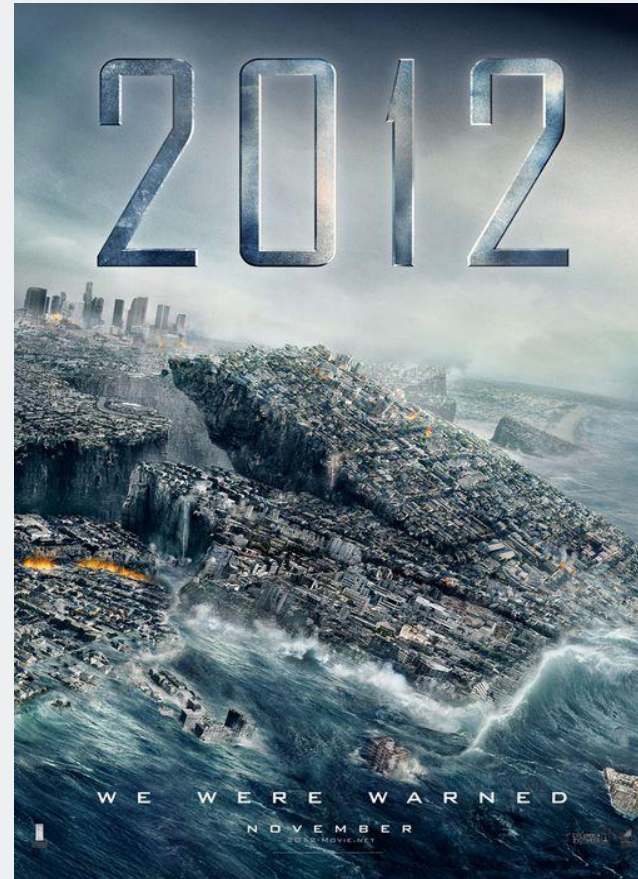
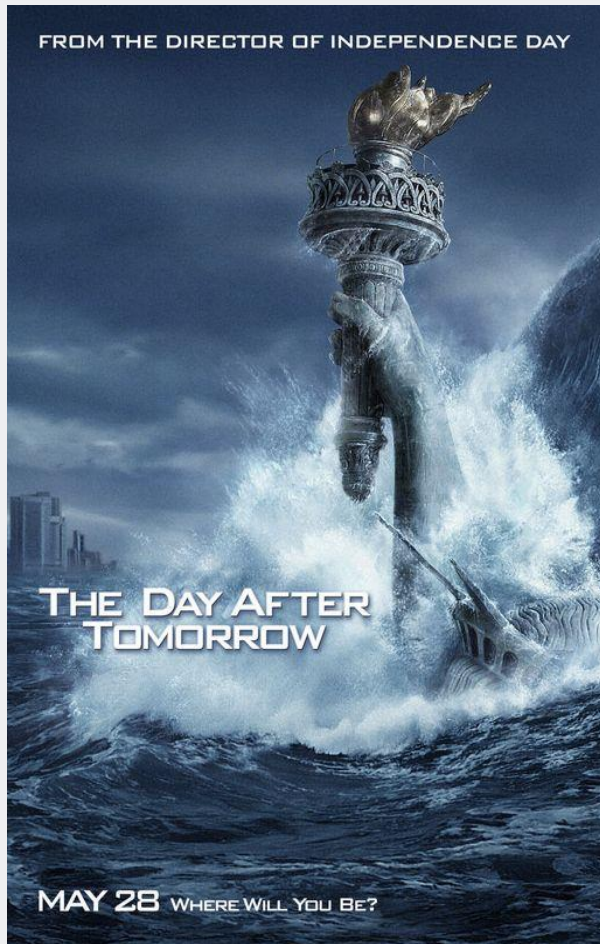
**Sea Level Rise is
Coming – What Do
We *Do* About It?**



“Science Fiction” - *Waterworld* (1995)



No Longer Science Fiction - *The Day After Tomorrow* (2004) and *2012* (2009)



Clear and Present Challenge

THE WALL STREET JOURNAL.

ENVIRONMENT & SCIENCE

Rising Sea Level Tied to Faster Melt

U.S. NEWS

Ocean Levels Continue to Rise

World-Wide, 2012 Was Among 10 Warmest Years on Record

The Boston Globe

How Boston is — and should be — preparing for rising seas

The New York Times

Borrowed Time on Disappearing Land

Facing Rising Seas, Bangladesh Confronts the Consequences of Climate Change

The Washington Post

Study: global warming related sea level rise poses big threat to Washington, D.C.

San Francisco Chronicle

Global sea-level rise could hit California hard

TIME

The Earth Is Changing Rapidly. Can We Change Too?

Public Policy and Business Planning

Government Programs

- BCDC/NOAA Adapting to Rising Tides (ART) Program
(www.adaptingtorisingtides.org)
- United States Global Change Research Program
(www.globalchange.gov)

Proposed Approaches

- Strategic planning for facility siting and relocation
- Wetlands restoration for flood control
- New and improved levees and seawalls
- Protection of transportation and utility systems
- Harbor “safety belt” for storm surge/tidal protection
- Continued mitigation of greenhouse gas emissions

Strategic Business Planning?

NEWS

Google's San Francisco Bay barge remains a mystery

By Reuters November 5, 2013 | 10:18am




Photo: AP

Sea Level Rise - Panelists

Larry Goldzband

Executive Director
San Francisco Bay Conservation and
Development Commission (BCDC)

Michael Bangs

Vice President, Real Estate/Facilities
Oracle Corporation

Danny Kennedy

Co-Founder and Senior Vice President
Sungevity

Jeremy Lowe

Senior Coastal Geomorphologist
Environmental Science Associates (ESA)

Monique Moyer

Executive Director
Port of San Francisco

Chris Locke

Partner, Environmental Law/Land Use
Farella Braun + Martel LLP

Sea Level Rise is Coming – What Do We *Do* About It?

